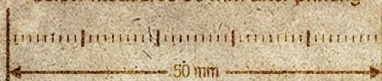


IMPORTANT NOTICE

For accurate hand size identification, please ensure the ruler below measures 50 mm after printing



KARPAL™ SERIES

HAND SIZING GUIDE

SEE OPERATING INSTRUCTIONS BEFORE USE

SIZING YOUR HANDS FOR PUNCHTOWN KARPAL MMA GLOVES - IN TWO SIMPLE STEPS

STEP ONE. Print this document at 100% size.

Do not use Fit to Page or any other type of page scaling. If printed correctly, the ruler guide at the top of the page should measure approx 50mm.

STEP TWO. Place your hand palm down in the position shown, ensuring your index finger lines up with the thick line here.



Your hand will fall within the sizing guides on the opposite side.

This is your hand size.

NOTE: If the size appears drastically incorrect, this document may not have been printed correctly - refer to STEP ONE



SMALL

MEDIUM

LARGE

X-LARGE



Punch Town™
TAKE IT TOO FAR

WARNING! THIS DOCUMENT IS REGISTERED ACCURATE FOR THE SIZING OF HANDS WITHIN THE DISTRICT OF PUNCHTOWN. USE OUTSIDE OF PUNCHTOWN COULD PRODUCE INACCURATE MEASUREMENTS LEADING TO INSTANCES OF BAD FIT AND POSSIBLE INJURY.