

### Features

- Indicates call activity from programmable zones
- Inputs for up to four SF120 peripherals or input for one legacy BATH and one CODE switch
- LEDs require no bulb replacement
- Excellent visibility
- Supervised connections
- Plug-in connections
- N.O. dry contact provides two-pin header for other devices

### Description

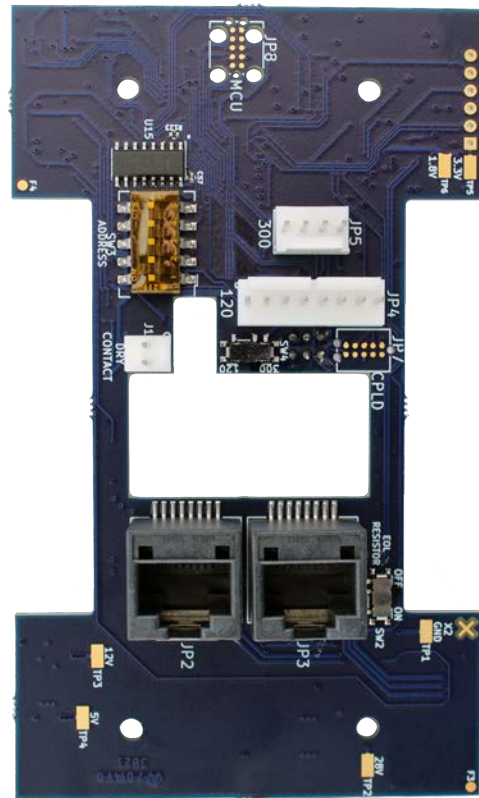
The PM424ZP5 Zone Light Module is used in combination with the LI484P5 Corridor Light to provide auxiliary visual annunciation for call activity within the zones and call types to which it is assigned. Patient priority and staff presence are indicated by eight programmable colors over four LEDs.

The PM424ZP5 is mounted to the back of the LI484P5 dome light via a plug-in connector. The PM424ZP5 also provides connections for up to four SF120 peripherals or one legacy BATH and one legacy CODE switch (SF300 series). The normally-open (N.O.) dry contact provides a two-pin header to be used for devices such as buzzers, etc. and provides a steady closure for the duration of the call.

### Required Components

Tek-CARE400 P5/P5+/GEN3 Nurse Call System, or  
Tek-CARE3000 Nurse Call System

LI484P5 Four-LED Corridor Light



PM424ZP5 Zone Light Module

### Specifications

Power:	24-28 VDC, 120 mA
Dry contact rating:	24 VDC, 100 mA maximum
Connections:	Plug-in connectors

### Listings



UL® 1069 Listed and cUL® Listed to CSA  
C22.2 No. 205; UL® File Number E71599.