

# TekTone®

COMMUNICATIONS FOR TODAY ... AND TOMORROW.



TekTone<sup>TEP</sup>  
**elite**  
Partner

AFFORDABLE  
TONE-VISUAL

## Tek-CARE® 120

tone-visual nurse call system



### AESTHETICS



The sleek master station and modern stations provide an updated look while maintaining simplicity of use. With a smaller footprint, the system more easily blends into the environment.

### AFFORDABILITY



With scalable options, the system can be designed to fit any budget, providing desirable features while maximizing efficiency.

### FLEXIBILITY



The Tek-CARE120 is designed for simple installation, making it a perfect fit for new and retrofit installations. Stations are customizable, creating even more options for personalization.

# Tek-CARE® 120

## tone-visual nurse call system

Tek-CARE®120 is an aesthetically pleasing and surprisingly affordable nurse call system designed for easy installation and years of trouble-free operation in a variety of healthcare facilities, such as skilled nursing, senior living, assisted/independent living, urgent care, clinics, and ambulatory surgical centers. With the smaller, flexible touchscreen master and versatile wall stations, upgrading to the Tek-CARE120 provides facilities with a modern and discreet system.



The compact master stations can be either wall- or desk-mounted. The LCD touchscreen lists patient calls by priority in a pleasing display, and calls are annunciated via pleasant call tones to reduce institutional noise. A dome light may

be connected directly to the master station to indicate the highest-priority call originating in the master's zones.

Two-button pull-cord stations include inserts for use as emergency, code call, or bath stations—or create custom inserts. Buttons are backlit to ensure visibility in low light, and the washable pull cord can be left off. Optional water-resistant seals allow the stations to be used in showers, baths, or tub rooms.



The versatile options offered by the Tek-CARE120, combined with its simple installation, make it an easy and affordable fit for every facility. Re-use of existing wire and a wide variety of station options make it customizable to your budget and needs, ensuring cost savings. LED dome lights require minimal maintenance, and the manufacturer's warranty protects your investment for up to 3 years.







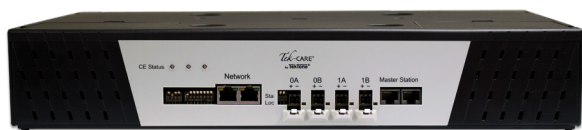
# Tek-CARE®120 Components



master station with wall mount bracket



master station with desk mount housing



central equipment module – stack or rack mount



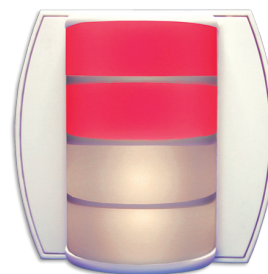
patient station, single 1/4" jack



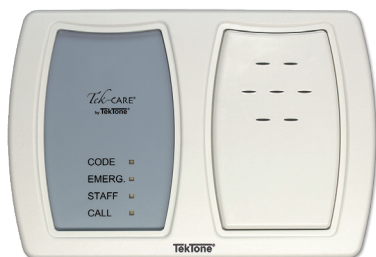
call cords



patient station, dual 1/4" jacks



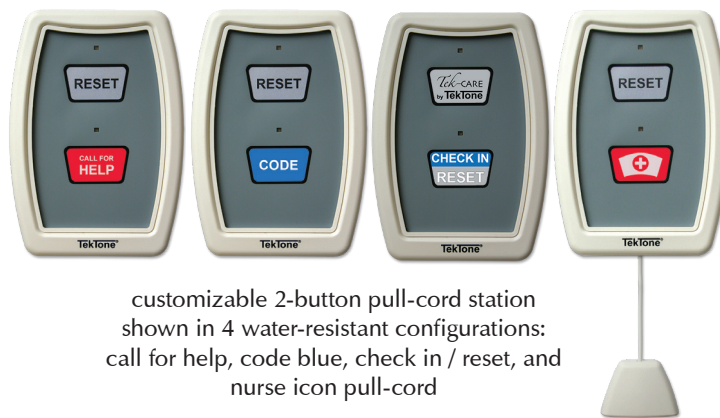
room controller with dome light, 2 LED colors (shown off and on)



duty station with tone speaker



auxiliary input module provides 2 inputs capable of monitoring devices such as door contacts, security panel outputs, and more



customizable 2-button pull-cord station shown in 4 water-resistant configurations: call for help, code blue, check in / reset, and nurse icon pull-cord



Tek-CARE® Staff App for iPhone, iPad, iPod touch and Apple TV® and Android devices



pager

## TekTone®

COMMUNICATIONS FOR TODAY ... AND TOMORROW.

**BEC**  
Integrated Solutions

TekTone TEP  
**elite**  
Partner



TekTone's quality system is registered by UL® to the ISO 9001:2015 standard. (Reference #10001510.)

5225 Sheridan Drive • Buffalo, NY 14221 • support@becsolutionsllc.com

Phone: 888-556-3998 or 716-689-0871

