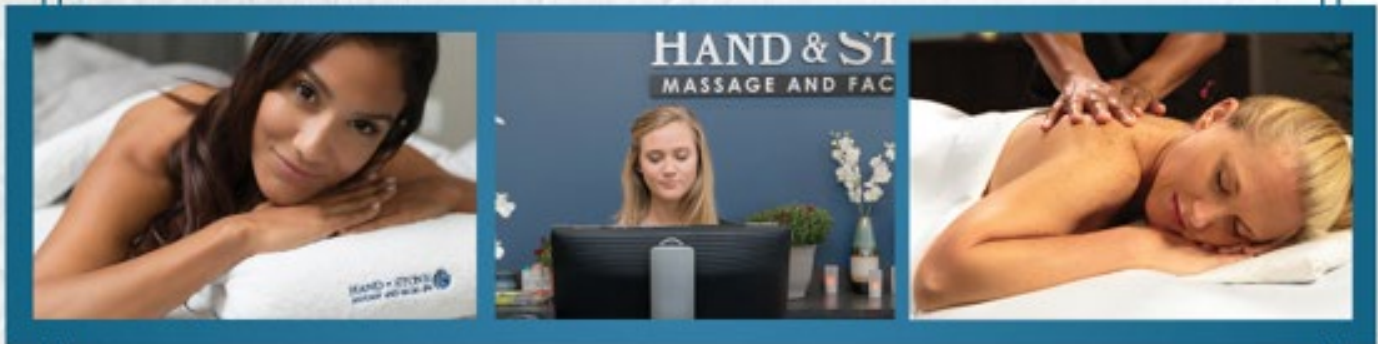




# Attention Button

## Set Up Guide





## Hand and Stone Franchise Corp.

1210 Northbrook Drive, Suite 150  
Trevose, Pennsylvania 19053  
Tel: 215-259-7540

### Attention Button Set Up Guide Disclaimer

This document has been provided based on a “guideline” of suggested tasks for you to accomplish during the installation and operation of the Attention Button System. It is not a legal document, nor does it provide legal advice. This document simply summarizes a list of responsibilities and guidelines.

The information contained in this document may contain confidential and/or privileged information. It is intended only for individual(s) or organization directly associated with Hand and Stone and its entities. Reproduction of this document in whole or in part without the express written permission of Hand and Stone Corp. is expressly forbidden. If you are not the intended recipient of this document, you are hereby notified that any review, dissemination, duplication, distribution or copying of this document and its contents, or the information contained herein is strictly prohibited.

## Table of Contents

Initial Setup .....	4
Using the MV200Z Console .....	6
Additional Information.....	9
Installing Devices.....	10
Default Settings MV200Z Console .....	12
Programming the MV200Z Console .....	13
Table Installation.....	14



**YOU MUST TEST THE SYSTEM WEEKLY TO ENSURE ALL THE BUTTONS ARE WORKING AND COMMUNICATING WITH THE CONSOLE!**



BEC Integrated Solutions, LLC  
5225 Sheridan Dr.  
Williamsville, NY 14221

## Initial Setup

Carefully remove the contents from the package(s) and verify that you have the following parts for the head end equipment:

- MV200Z console
- 12VDC power supply
- USB-Serial kit
- Antenna
- 2 green output terminal blocks
- UPS450 battery backup
- Programming spreadsheet
- Programming software disc

### Setting up Head End

1. Connect battery in the battery backup unit. On the bottom, slide out orange plastic clip and press down into battery slot (shown below). Plug the power cable into a wall outlet and press the power button on top of unit.



2. Connect antenna, power cable, and green output terminal blocks to the back of the MV200Z console. Plug the other end of the power cable into the *Battery + Surge* side of the battery backup. The console should power on.



- If your MV200Z console has been preprogrammed, the devices may now be installed according to the programming spreadsheet included with the shipment. Refer to page 9 and following for device installation instructions.

<i>Micro Vision</i>		200z Programming Sheet			
		<b>SO#</b>			
<b>Customer:</b>		<b>Site:</b> Hand & Stone- Hamilton			
<b>Contact:</b>		<b>Date:</b> 3/2/2020			
Room Name	Push Button				
<i>Only 12 Characters</i>	WNC-SB				
Room 1	B60033				
Room 2	B60015				
Room 3	B60012				
Room 4	B60006				
Room 5	B60003				
Room 6	B60030				
Room 7	B60048				
Room 8	B60021				
Room 9	B60051				

- If your MV200Z console has not been preprogrammed, refer to the following sections for software installation and programming instructions. (Page 12 and 13 and following for device installation instructions)

**NOTE: It is extremely important for the proper function of the MV200Z that the console is set up at least 4 feet away from other electronic devices and metal areas. Optimum location for installation is on top of a clean, clear desk.**

#### Installing Software to Program MV200Z Console

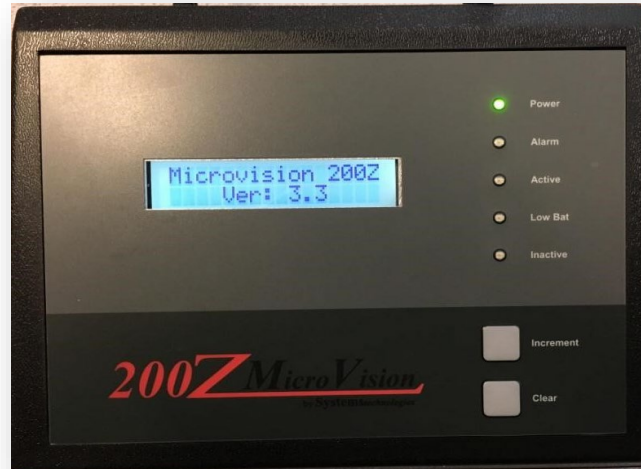
Follow these steps for proper installation.

- Install the USB-to-Serial driver by inserting the disc into a laptop or computer. Double click on the *Setup* file. Follow the on-screen instructions to install the driver.
- Connect the USB-to-Serial cable between the serial port on the back of the MV200Z console and a USB port on the computer.
- Install the MV200Z Programming Unit 1.6 by inserting the disc into a laptop or computer. Double-click on the *Setup* file. Follow the on-screen instructions to install the programming unit.

You are now ready to operate the software.

# Using the MV200Z Console

## Front Display and Buttons



Resting state of the MV200Z console. The Power LED will be illuminated.



Alarm state of the MV200Z console. The Alarm LED will illuminate and the device information (Room 101) will display on the LCD screen. The device index (01) also displays. The locator ID (1603) displays in the bottom right corner, if locators are programmed in. Reset the device in alarm to clear the MV200Z console.

## Attention Button Set Up Guide



Pressing the *Increment* button will allow quick viewing of which rooms are currently programmed into the MV200Z console. For active rooms, the Active LED will illuminate. Press the *Increment* button to go through each room. When active room list has run out, the Inactive LED will illuminate. Let the LCD screen sit for 10 seconds to revert to home screen.



If the device in alarm is programmed as a Persistent Alarm, then to clear the alarm from the MV200Z console the *Increment* button must be pressed. The LCD display will show a message "Call-Clear" (see above). When this happens, press the *Clear* button. The alarm will clear from the console.

## Attention Button Set Up Guide



When the battery in a device is getting low, it will send a signal to the MV200Z console. The Low Bat LED will illuminate, and the LCD display will read "Low Battery" for the specific room. *This means that the battery should be replaced within **one week** for the device to continue to operate normally.*



When a device goes into fault, the Inactive LED will illuminate and the text "Device Fault" will display, showing the device index and the room device that is in fault. For more information on device faults, Refer to page 8 of this setup guide.

# Additional Information

## Device Faults

Each device for your system is supervised by the MV200Z console. The devices send out a supervisory signal every hour that checks in with the console. If a supervisory signal is not seen for a device within the programmed fault window (default 18 hours), then the MV200Z will display a Device Fault alarm for that device.

### Common Causes for Device Faults

- Dead battery
  - Fix: Replace battery.
- Device has left the facility.
  - Fix: Return device to facility or replace with a new device. Ensure the correct ID of the new device is programmed in place of the old device.
- Incorrect ID has been programmed in.
  - Fix: Check to see if the physical device ID matches the programmed ID for that device.
- Antenna has been disconnected from the MV200Z console.
  - Fix: Attach antenna to the back of the MV200Z console.
- Device has been damaged.
  - Fix: Replace with a new device and ensure that the correct ID of the new device is programmed in place of the old device.

After checking and fixing these common causes for faults, alarm the device to clear the fault from the MV200Z console. If none of these options clears the fault, please call Systems Technologies Technical Support at (208)-762-6800 for further assistance.

# Installing Devices

## Repeaters



*NOTE: All types of repeaters have a maximum 75 ft.-radius coverage area. These repeaters need to be spaced no more than 150 ft. from other repeating/receiving units.*

Repeater layout has been preconfigured by your sales engineer. Please install the repeaters according to floor plans provided to you. If there are any questions, call Systems Technologies before proceeding.

### Installing Low Power Repeaters (VL135LP-B7):

1. Attach small black antenna to the top of the repeater.
2. Plug in orange plastic terminal block to bottom of the repeater.
3. If your repeater is a battery backup model (VL135LPB-B7), the orange connector should have a small jumper (see below) next to the input power wires.



4. Attach the other end of power wires to the TP1220 transformer. It does not matter which wire goes where.
5. Plug into wall outlet. The red power LED on the bottom panel will illuminate.
6. Repeater will initialize by temporarily illuminating all three red LED on the bottom panel.
7. Repeater is now ready to be programmed into the MV200Z console.

## Push Button Stations

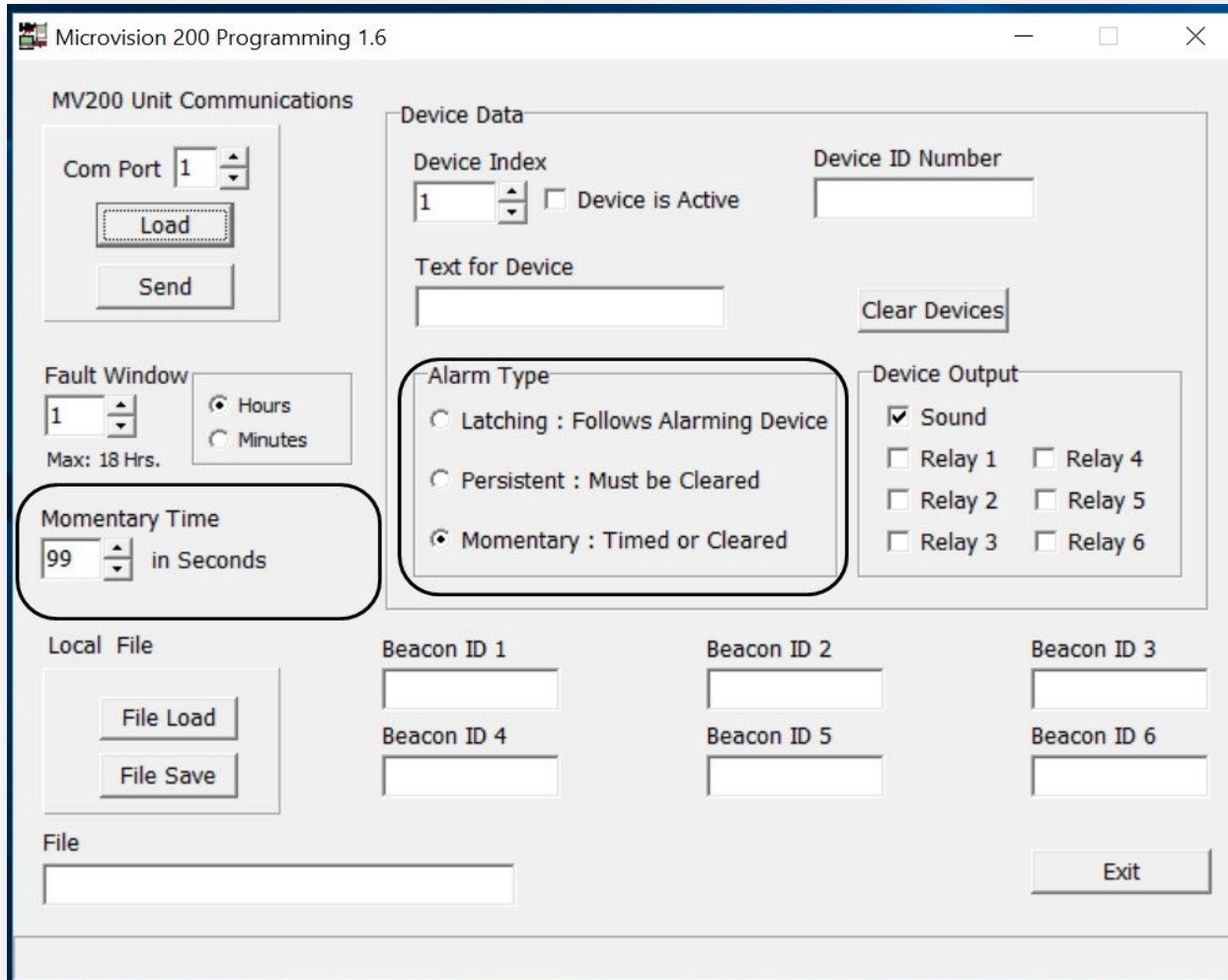


If your MV200Z system was programmed by Systems Technologies, please refer to your programming sheet when installing the pull stations. The programming sheet will tell you which devices go into which rooms.

### Installing Push Button Stations:

1. Remove pull station from packaging.
2. Remove blue battery tab from battery to power up the pull station.
3. Press the reset button on the back of the circuit board.
4. Check for ID sticker on the back of the pull station. This number will be programmed into the software to associate it with a room. If your system is not already programmed, **take note of this ID and record which room you are installing it into.**

## Default Settings MV200Z Console



1. Connect the Serial to USB cable to the back of the MV200 and USB port.
2. BLACK BOX:
  - a. Latching means that the device will stay in alarm until it is physically reset by pushing the button in the treatment room.
  - b. Persistent means that the device will stay in alarm until it is cleared from the console.
  - c. **Momentary means that the device will stay in alarm until the *Momentary Time* is elapsed.**  
**The Hand & Stone Default is "Momentary" & Momentary Time box should be set to 99.**

## Programming the MV200Z Console


Below are the steps to program the transmitters in...

1. Connect the serial cable from the MV200 to the computer you loaded the software on (the software is on the CD that came with the system).
2. Open the program and choose COM PORT 3 in the upper left corner.
3. Click Load below the com port
4. Scroll through the devices until you come to an open spot. Enter the serial # of the device minus the "B" letter.
5. Under alarm type make sure "momentary" is checked.
6. Under momentary time to the left make sure "99" is there.
7. Click send to send the program to the MV200.

For questions and assistance please call.

Technologies Technical Support at (208)-762-6800 for further assistance

# Table Installation

	Document Number: <i>Med-RA-SM-223</i>
	Title: <i>Proluxe Attention Button Attachment</i>
	Revision: <i>4</i>

## 1.0 Purpose

1.1 Instructions for Proluxe Salon Top, Lift-Assist Backrest Top, and Flat Top tables.

## 2.0 Scope

2.1 This procedure applies to Proluxe Salon Top, Lift-Assist Backrest Top, and Flat Top tables for attaching the Attention Button.

## 3.0 Tools needed:

- 3.1 Power Drill
- 3.2 3/32" Drill Bit
- 3.3 #2 Phillips Screwdriver
- 3.4 Tape Measure

## 4.0 Parts needed:

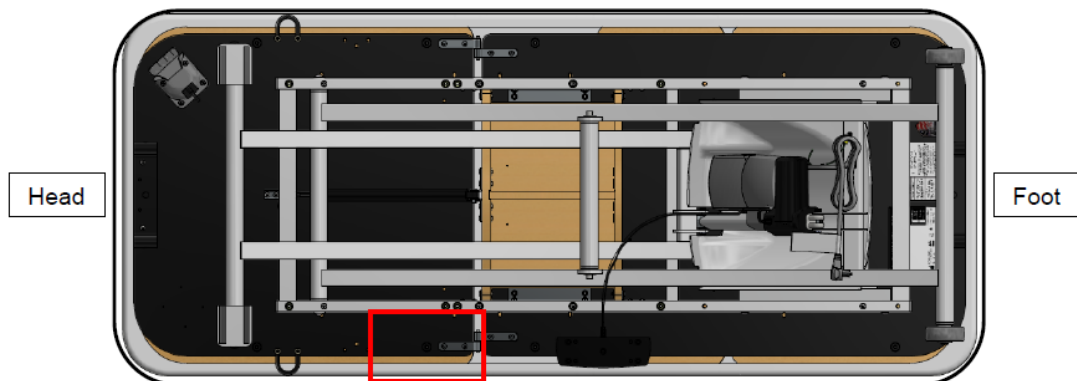
- 4.1 Attention Button Mount (PN 80326)
- 4.2 2x Screw-FPh TCMS 6-32" x 1/4" CZ (PN 80327)
- 4.3 2x Screw-PPh SMS 10 X 3/4" (PN 2690)

## 5.0 Precautions **PLEASE READ INSTRUCTIONS COMPLETELY BEFORE INSTALLING**

Please be sure that the table is clear of all people and materials before attempting to assemble. **Remove power cable from its power source.** Lastly, give yourself adequate room around the table to make the task more comfortable and safe.

## 6.0 Procedure Steps *(Time to complete approximately 30 minutes) Secure all fasteners ¼ turn past flush.*

6.1 Drill two pilot holes in the locations marked using a 3/32" drill bit.

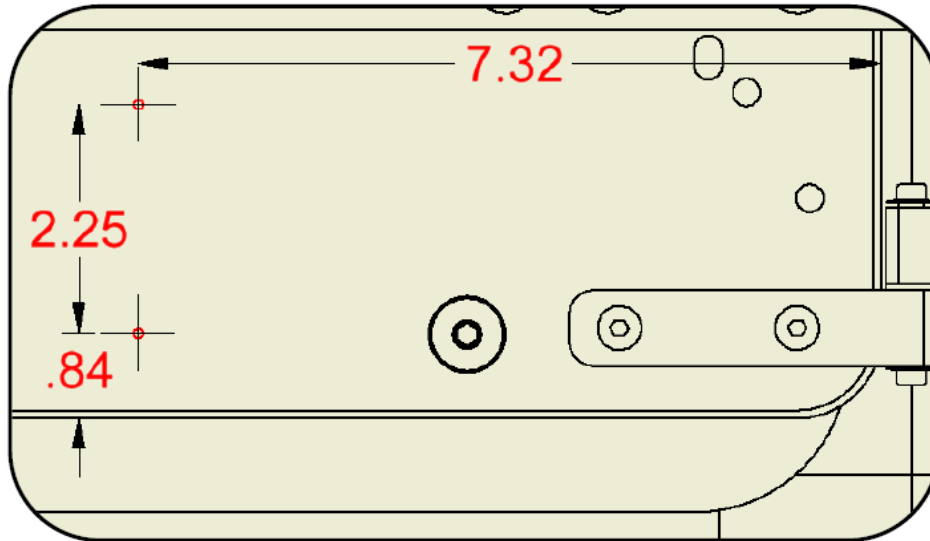




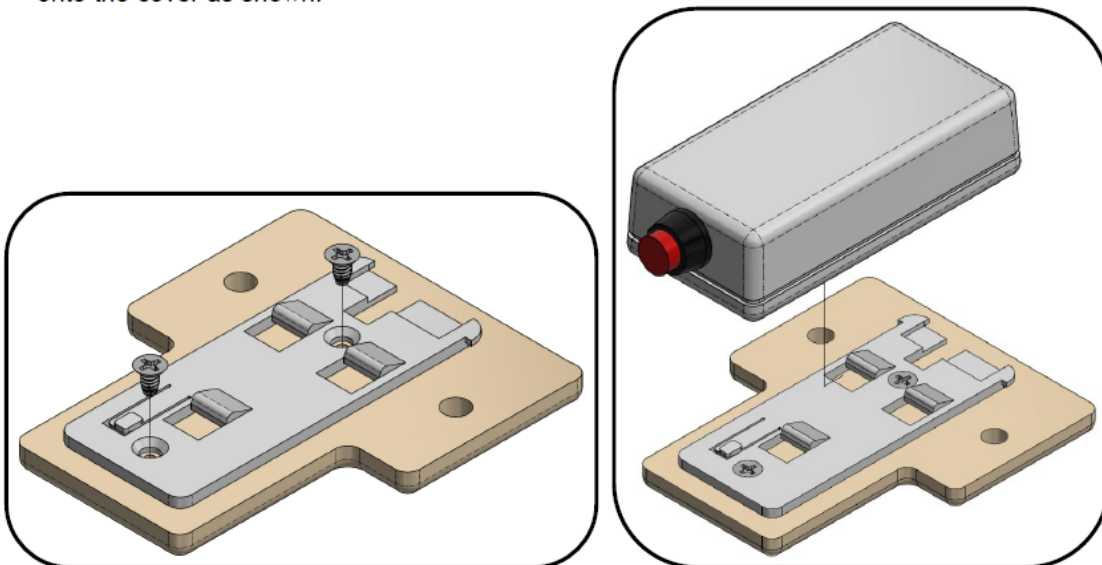
Document Number: *Med-RA-SM-223*


Title: *Proluxe Attention Button Attachment*

Revision: 4

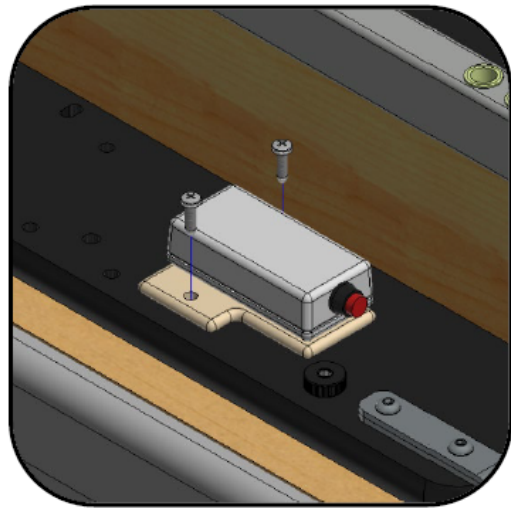
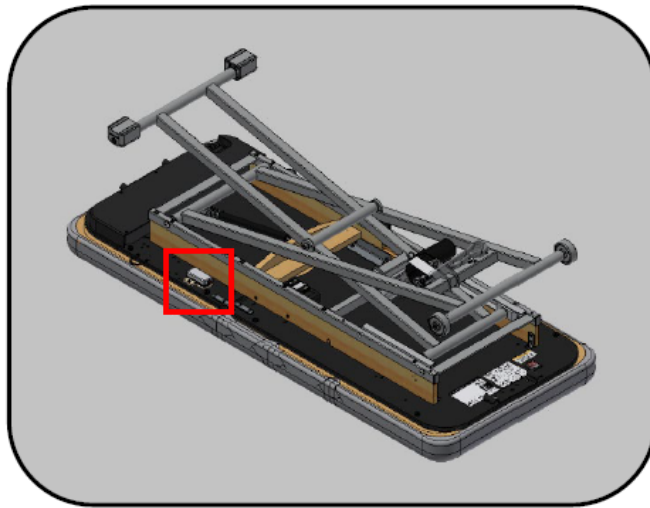


6.2 Attach the cover of the Attention Button to the Attention Button Mount with the two small flat head screws (PN 80327) as shown using a #2 Phillips Screwdriver. Then snap the Attention Button box onto the cover as shown.



	Document Number: <i>Med-RA-SM-223</i>
	Title: <i>Proluxe Attention Button Attachment</i>
	Revision: <i>4</i>

6.3 Attach the Attention Button assembly to the frame at the holes drilled in Step 6.1 with the two Pan Head screws (PN 2690) as shown using a #2 Phillips Screwdriver.



**7.0 Appendix**

Fill out and return form Appendix A

**8.0 Revision History**

Revision No.	Description of Change	Change to Section	Effective Date
1	Initial Release	All	01/23/2019
2	Added Proluxe Salon Top to Purpose & Scope; Fixed typos; Removed Product Servicing & Repair Form	All	01/07/2020
3	Updated procedure steps to match the new single piece top style	All	08/13/2020
4	Updated Attention Button Orientation	All	10/19/2023