

# Product Information



## 2-wire Apartment Door Station



MT-701



MT-702



MT-703



MT-704



MT-706



MT-708

### DESCRIPTION

2-wire system color outdoor station  
with rain cover (1~8 buttons)

### FEATURES

- 700 TV lines HD camera
- Zinc alloy panel with rain cover
- Name plate display with LED background
- Compatible with all 2-wire monitors

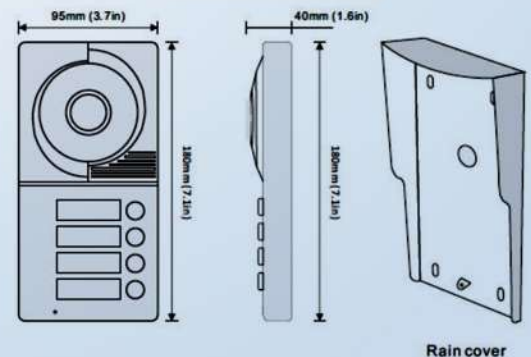


MT-701R

### SPECIFICATIONS

Power supply:	DC 24V
Power Consumption:	1W in standby, 5W in working
Unlock Power output:	12Vdc, 250mA
Unlock timing:	1s, 5s, 10s, 15s
Working Temperature:	-20° C~ +55°C

### DIMENSION

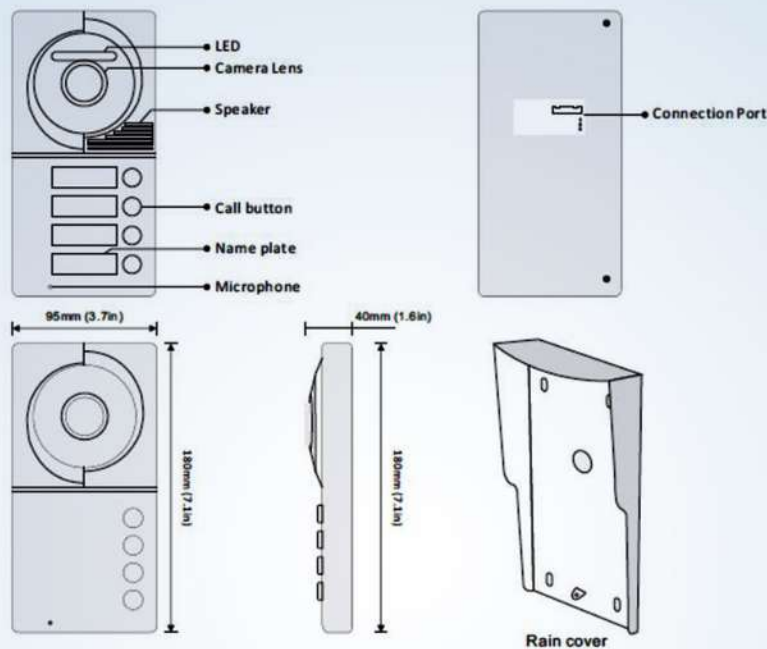


Toll-Free: 888.556.3998  
Phone: 716.689.0871

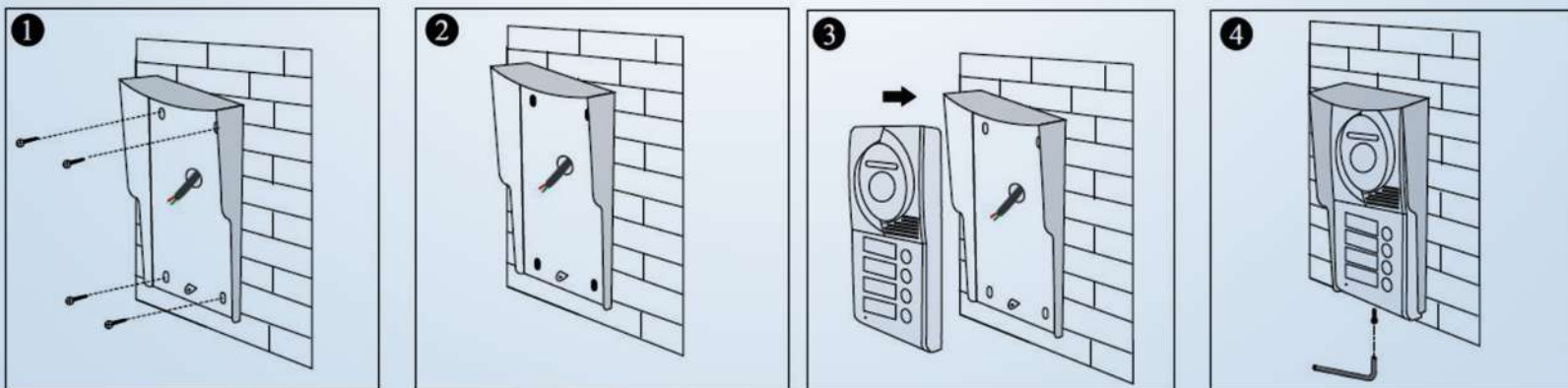
Address: 5225 Sheridan Drive, Georgetown Square  
Williamsville, New York 14221

E-mail: [support@becsolutionsllc.com](mailto:support@becsolutionsllc.com)

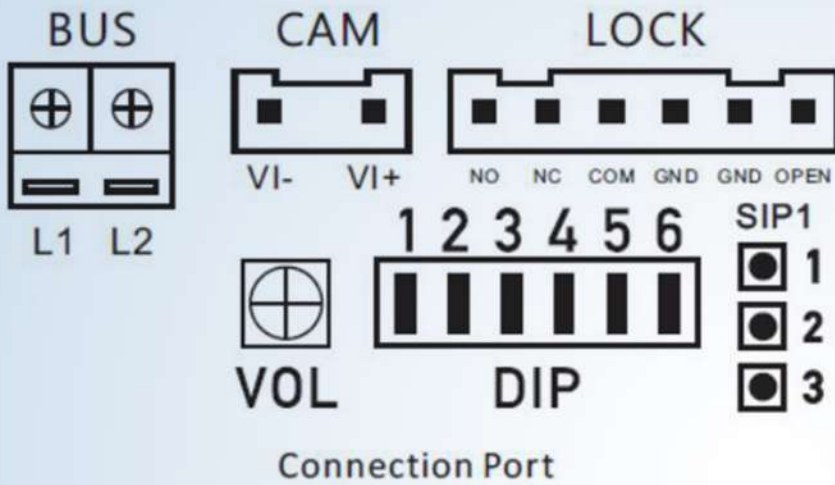
### PARTS AND FUNCTIONS



### INSTALLATION

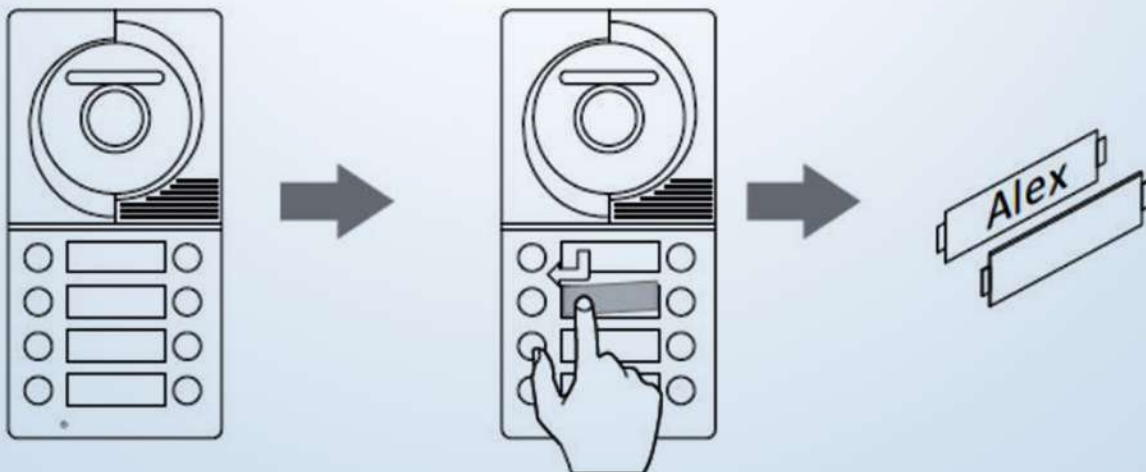


### TERMINAL DESCRIPTION



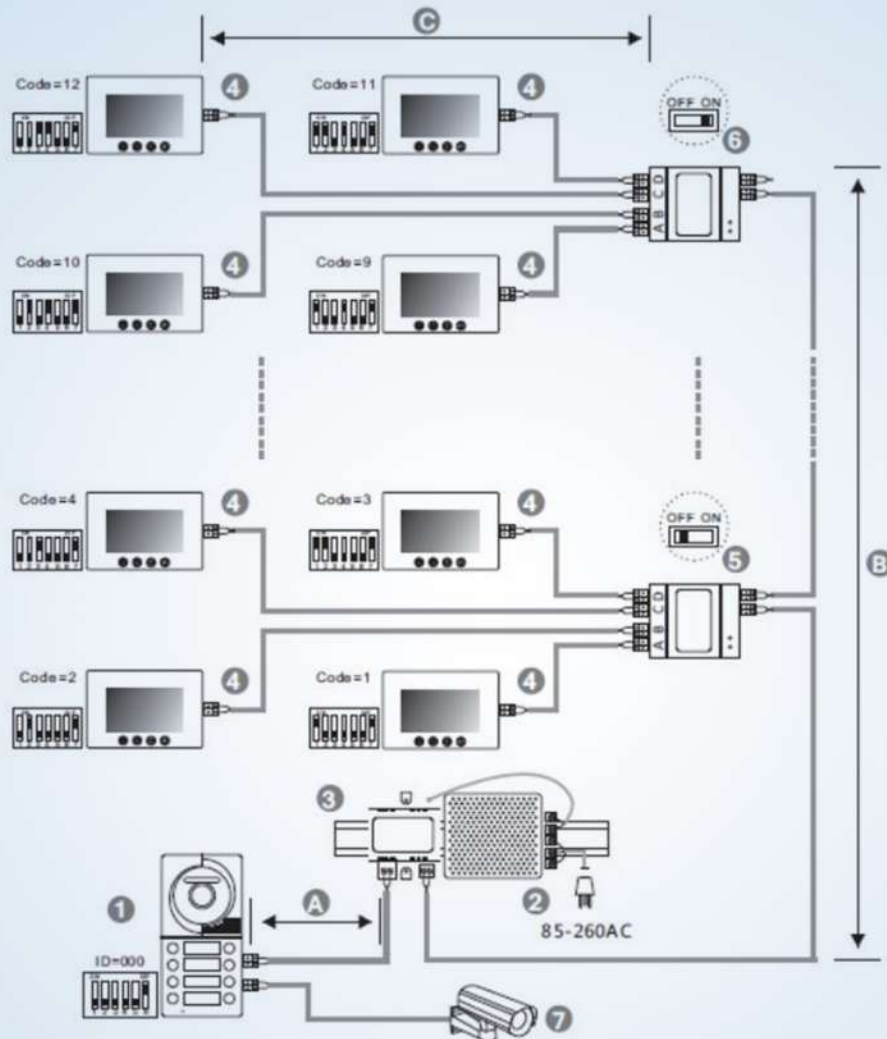
BUS: (L1, L2) non-polarity bus line  
CAM: Extra camera connection port  
LOCK: Electronic lock connection port  
VOL: Volume adjustor  
DIP: DIP switches for system configurations.  
SIP1: Door lock jumper

### PLACE NAME LABEL





### WIRING



When monitor quantity < 20

Cable Usage	A	B	C
Parallel cable 2×0.75mm <sup>2</sup>	60	60	30
Parallel cable 2×1mm <sup>2</sup>	80	80	40

When monitor quantity > 20

Cable Usage	A	B	C
Parallel cable 2×1mm <sup>2</sup>	60	60	30
Parallel cable 2×1.5mm <sup>2</sup>	80	80	40

- [1]: DOOR STATION, WHEN THERE IS ONLY ONE DOOR STATION, THE DIP BIT-1 AND BIT-2 SHOULD BE SET TO 000.
- [2]: POWER SUPPLY, MUST BE INSTALLED SIDE BY SIDE WITH POWER SEPARATOR.
- [3]: POWER SEPARATOR, MUST BE INSTALLED SIDE BY SIDE WITH POWER SUPPLY.
- [4]: MONITOR, EACH ONE WITH AN UNIQUE USER CODE, NOTE THAT ALL THE BIT-6 OF THE DIP SHOULD BE SET TO 1(ON) IN THIS CASE.
- [5]: BRANCH CONTROLLER, THE SWITCH OF THE BRANCH CONTROLLER SHOULD BE SET TO OFF EXCEPT THE LAST ONE WHICH IS AT THE END OF THE BUS LINE.
- [6]: BRANCH CONTROLLER, THE SWITCH OF THE BRANCH CONTROLLER SHOULD BE SET TO ON AS IT IS AT THE END OF THE BUS LINE.
- [7]: EXTRA CAMERA

## MULTI DOOR STATION WIRING

