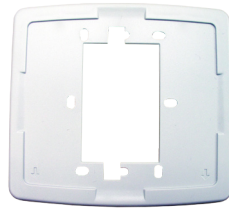


MODEL: 354002 - PULL CORD STATION WITH CALL BUTTON



354002



FEATURES

- Plastic pull cord for easy activation
- Smooth, non-porous PVC coating on the cord provides an easily cleaned surface
- Call-in button provides an additional call-in priority with built-in call assurance LED
- Call-Assurance LEDs
- Cancel button
- Water-resistant
- Large, easy to grab bell
- Continuous supervision of station
- 2-gang adapter plate included
- Plug-in connectors for easy service
- Bio-seals included over call and cancel buttons

SPECIFICATIONS

Power Required: 5.1mA @ 18VDC

Weight: 0.3 lbs (0.1 kg)

Size: W: 4.7" (11.9 cm)

H: 4.25" (10.9 cm)

D: 0.6" (1.5 cm) in back box; 0.5" (1.3 cm) off-wall with adapter plate

W: 5.5" (14.0 cm)

H: 5.0" (12.7 cm)

D: 0.6" (1.5 cm) in back box, 0.5" (1.3cm) off-wall

Housing & Finish: High-impact molded Cyclooy 2950 UL 94-5VB; light grey faceplate

Controls/Indicators: One (1) pull cord for call actuation, One (1) Push button, Two (2) Call-assurance LEDs, One (1) Cancel button

Terminations: Plug-on connector

Backbox Requirement: 1 gang (Non-gangable), 3-1/2" Deep. Please note station trims to 2 gang faceplate dimensions. Allow mounting trim area.

DESCRIPTION

The Pull Cord station with Call Button is an emergency pull cord station that provides the ability to place a unique call-in priority from a single station by pulling on its plastic cord. In addition, a call can be placed from the push button on the station that can be customized to a unique call-in priority to function as a routine call or an emergency call. The Pull-Cord station is typically located in bathrooms near the toilet. The Cancel button allows for cancellation of the call at the station. Unit may utilize remote Cancel button(s) for ease of nurse call cancel when pull cord is mounted in an inaccessible location (e.g. ceiling). To make the station water-resistant, the station perimeter is sealed on three sides with sealant. It also has water diversion channels that

open along the bottom of the station for drainage.

The Pull-Cord station is connected to its associated corridor light or domeless room controller and is continually supervised.

*Architect and Engineer (A&E) Specifications available online at: customerconnection.rauland.com
Specifications subject to change without notice*

©Copyright 2009 Rauland-Borg Corporation Printed in USA Rev 11/2009