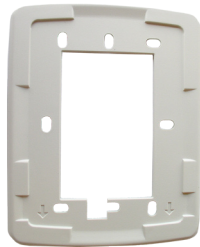


MODEL: 350300-REMOTE TILT/RELEASE DIN STATION



350300



Adapter Plate

FEATURES

- Allows for an additional connection of a remote Responder 5 pillow speaker
- All functions on the Patient Station connected are available
- Provides, Nurse Call, TV and Lighting Control functionality, if available
- 1-gang adapter plate included
- Continuous supervision by station
- Plug-in connectors for easy service

SPECIFICATIONS

Power Required: 12mA @ 18VDC

Weight: 0.25 lbs (0.12 kg)

Size: **W:** 3.2" (8.1 cm)

H: 4.25" (10.8 cm)

D: 1.9" (4.8 cm)

with adapter plate

W: 3.9" (9.9 cm)

H: 5.0" (12.7 cm)

D: 2.1" (5.3 cm)

Housing and Finish: High-impact molded ABS94-5VB;
light grey faceplate

Terminations: Plug-on connector;

Backbox Requirement: 1 device, Non-gangable, 3 1/2" deep

DESCRIPTION

The Remote Tilt/Release DIN Station provides an additional Responder 5 Pillow Speaker connection to be placed away from the patient station. Allows family members control of TV and Lighting Controls without disturbing the patient or allows patient to sit in a chair while still having the ability to contact staff. A pillow speaker can be plugged into the Remote Tilt/Release DIN station and a pillow speaker can be plugged into the patient station at the same time with full controls. Patients will be able to place call-ins, depending

on their requirements, to the assigned nurse console(s), staff terminal(s) along with other annunciation devices such as wireless phones. The Remote Tilt/Release DIN Station can be used with the Responder 5 Single Patient Station, Enhanced Single Patient Station and Staff Station.

*Architect and Engineer (A&E) Specifications available online at: customerconnection.rauland.com
 Specifications subject to change without notice*

©Copyright 2009 Rauland-Borg Corporation Printed in USA Rev 09/2009