



# SWX125

## Bronze Marine Pump

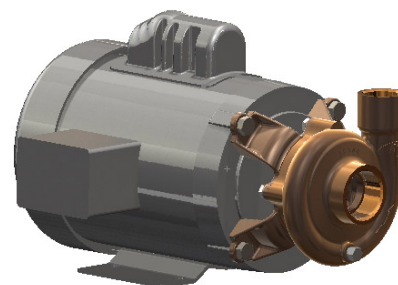
1-1/4" x 1" End Suction Centrifugal Pump

Manufactured in investment cast Nickel Aluminum Bronze CA954, the SWX series of pumps were designed for applications pumping seawater.

The pumps are equipped with enclosed impellers standard to ensure optimum efficiency and low HP ratings. Type 16 Carbon/Silicon Carbide/Viton mechanical seal offers excellent resistance to harsh seawater applications while protecting the motor shaft from exposure. The volute is sealed with a viton o-ring.

All pumps are close coupled to 60/50 HZ TEFC motors with IP (Ingress Protection) rating of IP44 (single phase) to 55 (three phase) compliant with ISO8846 marine ignition duty.

The pump also meets CE and EU requirements.

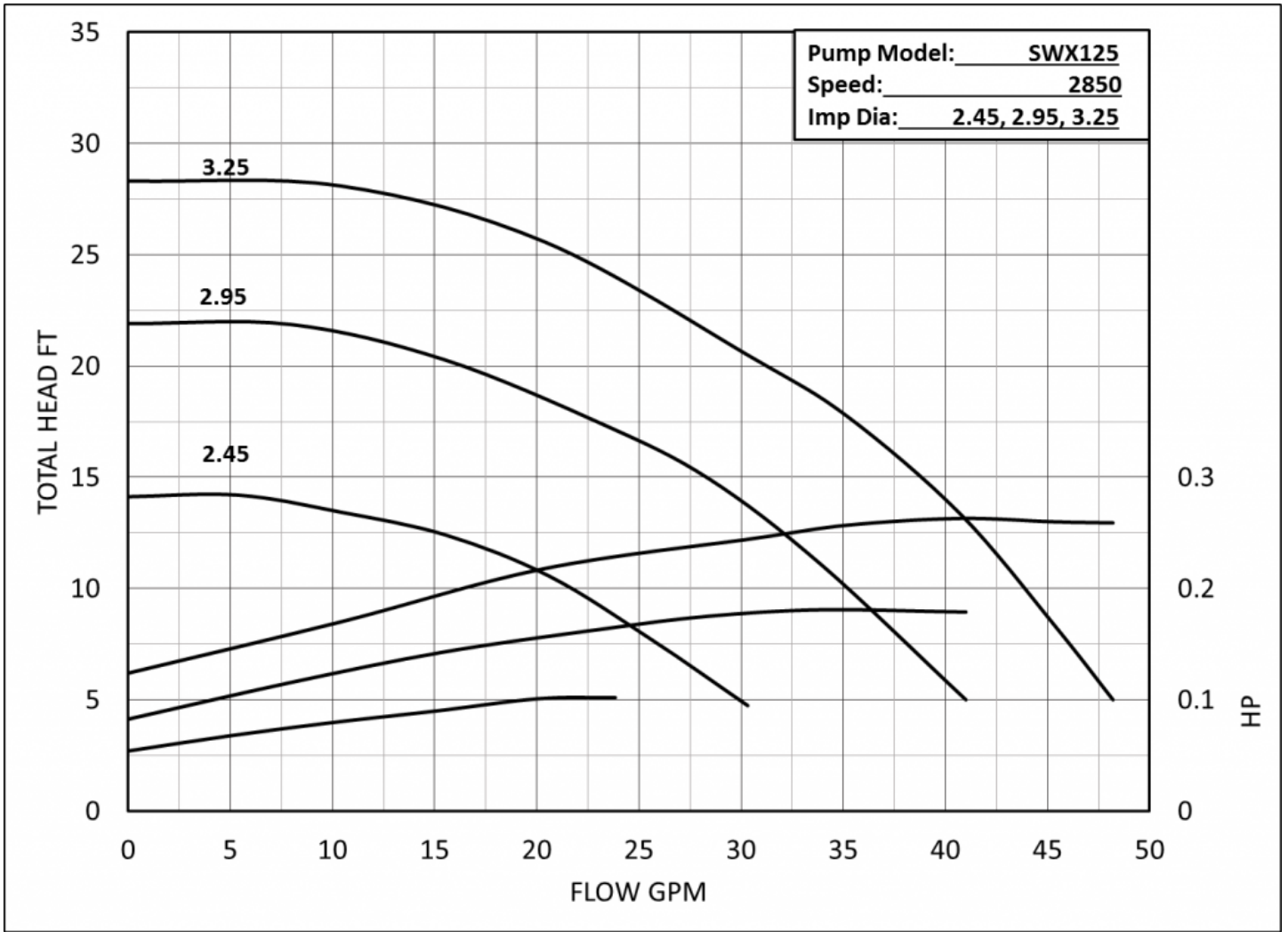


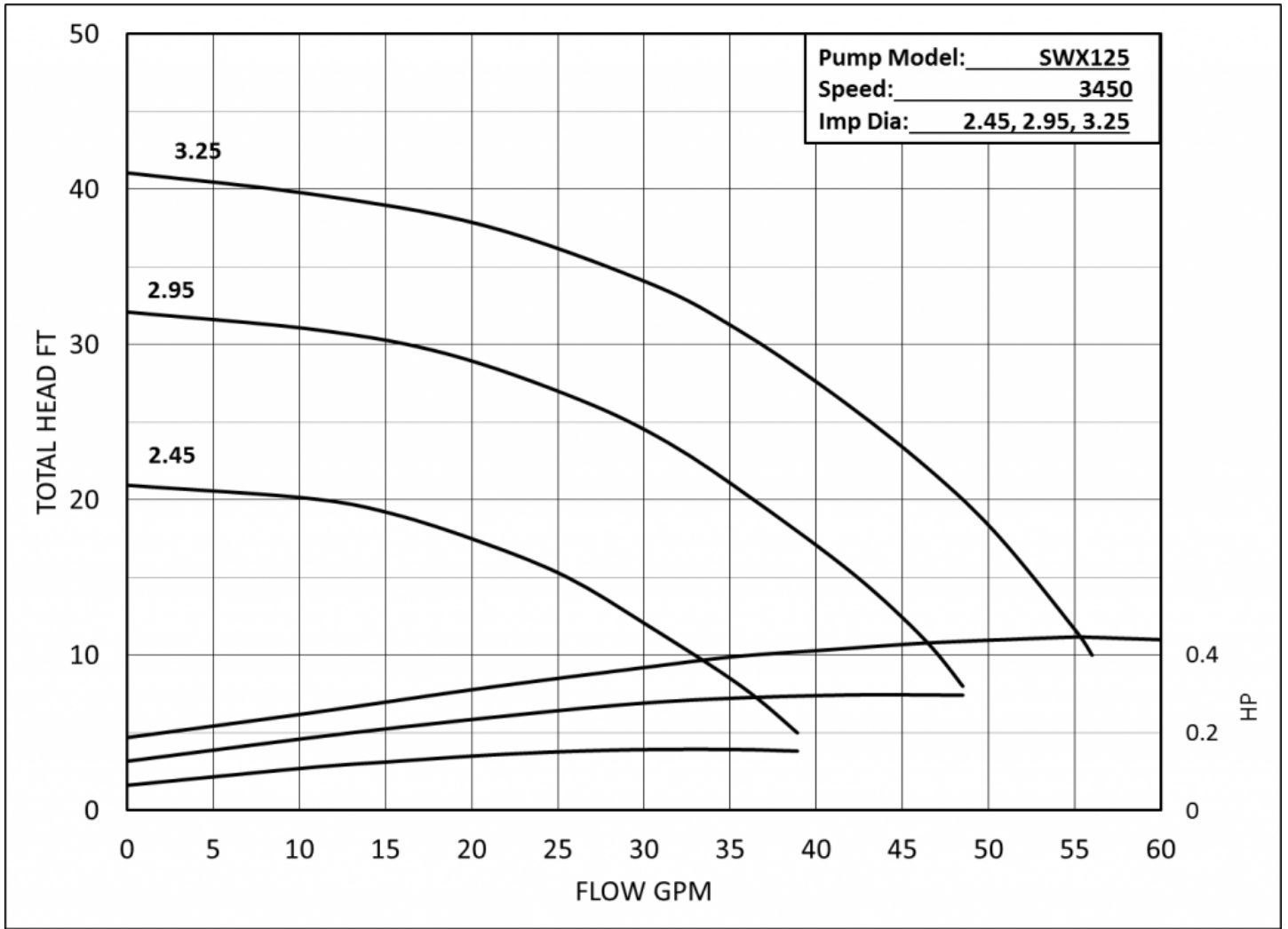
### Application

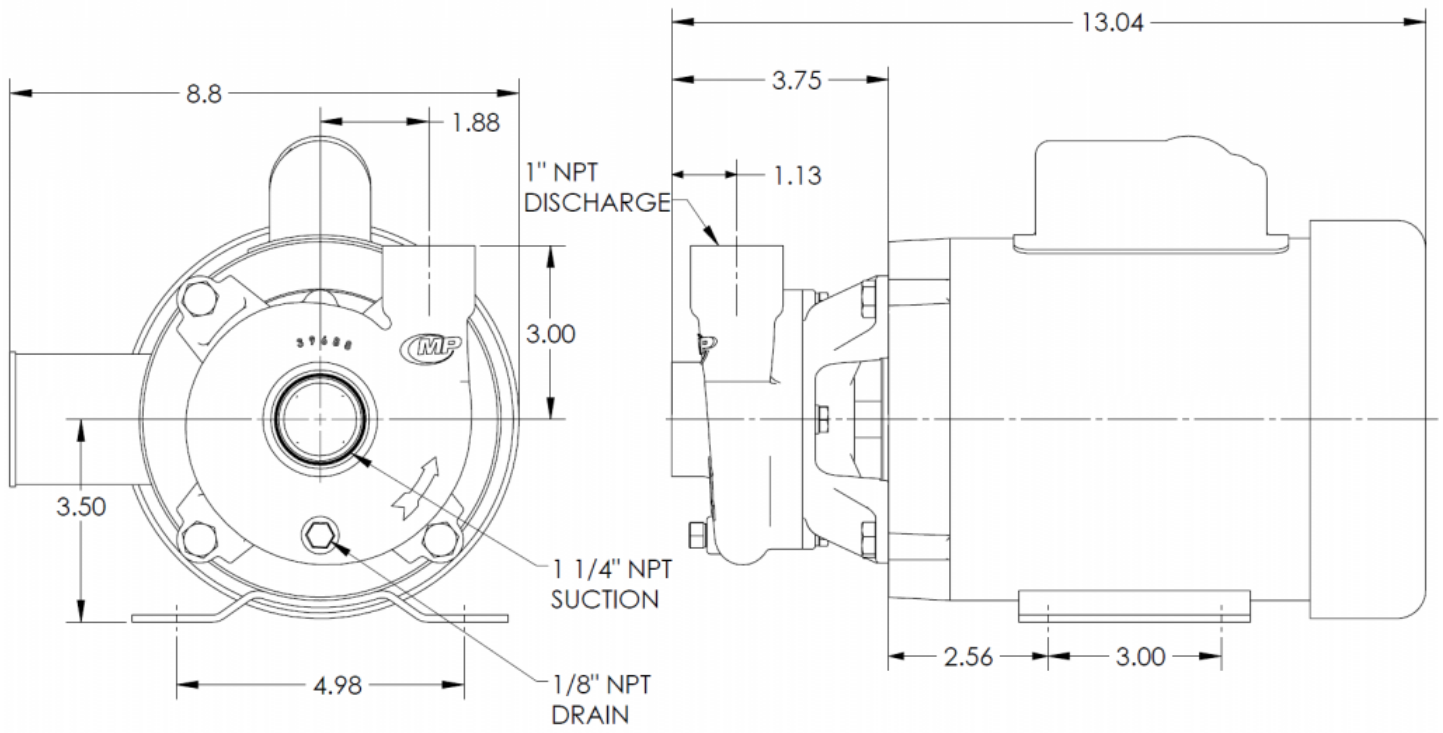
- Marine

## SPECIFICATIONS:

Suction And Discharge	1.25" x 1.0" NPT
Materials Of Construction	316 SS, Bronze
Impeller	Balanced to meet ISO1940-1 G6.3 for optimum efficiency
O Ring	Viton
Seal	T-16 Carbon/Silicon Carbide/Viton/316SS
Motor	56J TEFC, CE, 60/50 HZ, ISO8846 marine ignitor, Single Phase IP44 with ATO, Three Phase IP55
And CE Reqs.	Array







ITEM NO.	PART NO.	DESCRIPTION	QTY
1	50031	HOUSING	1
2	39687	ADAPTER	1
3	39691	IMPELLER 3.25	1
	50097	IMPELLER 2.95	1
	50099	IMPELLER 2.45	1
4	39757	SEAL ASSEMBLY, CAR/SIL CAR	1
5	50136	MOTOR, 1/2 HP 3 PH	1
	38209	MOTOR, 1/2 HP 1 PH	1
	50096	MOTOR, 1/3 HP 1 PH	1
6	39692	O-RING, VITON	1
7	25663	CAPSCREW 3/8-16 x 3/4 304 SS	4
8	33564	LOCKWASHER 1/4" 304 SS	4
9	35039	CAPSCREW 1/4-20 x 5/8 316 SS	4
10	36355	PIPE PLUG, BRONZE 1/8" NPT	1

