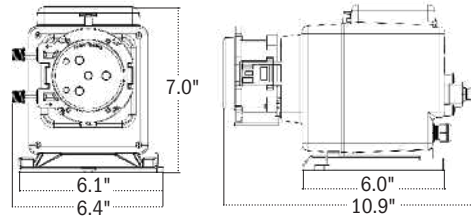


# S SERIES SPECIFICATIONS

# STENNER PUMPS®

## S30 Models

Shipping Weight  
9 lbs (3.7 kg)



### AGENCY LISTINGS



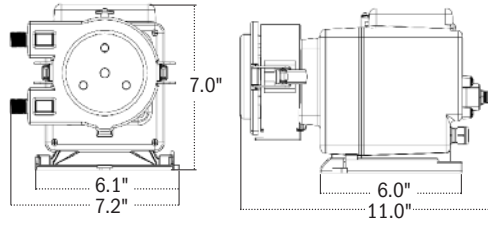
Intertek  
94247  
CONFORMS TO  
ANSI/NSF STD. 50  
Equipment for swimming pools,  
spas, hot tubs and other  
recreational water facilities.



Listings vary by model

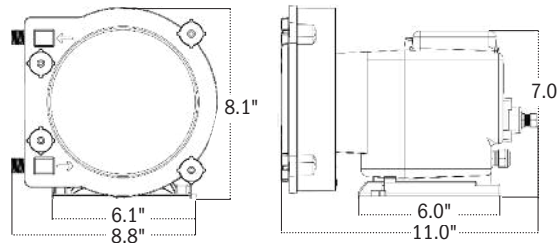
## S40 Models

Shipping Weight  
9 lbs (3.7 kg)



## S50 Models

Shipping Weight  
14 lbs (6.3 kg)



### FEATURES

- Operational mode options: 4-20mA, 0-10VDC, dry contact, hall effect signals, cycle timer, 7 day/24 hour timer and manual
- Backup pump capability
- Standby input option to stop or start pump remotely
- Leak detection with dedicated output relay
- Modbus RTU over RS-485 capable (accessory required)
- Performance indicators with optional dry contact output relays
- Password protection
- Totally enclosed housing, NEMA 4X
- 2 year warranty
- Self-priming, does not lose prime or vapor lock
- Pumps off-gassing solutions and can run dry
- 3-point roller design assists with anti-siphon
- Output reproducibility

### SPECIFICATIONS

- Flow Rate Output Control** Varies per control mode; digital keypad
- Reproducibility**  $\pm 2\%$
- Maximum Working Pressure** 25 psi (1.7 bar), 100 psi (6.9 bar)
- Maximum Operating Temperature** 104°F (40°C)
- Maximum Suction Lift** 25 ft (7.6 m) vertical lift, based on water
- Motor Type** Brushless DC motor
- Shaft rpm** (average maximum) 45
- Duty Cycle** Continuous
- Maximum Viscosity** 1500 Centipoise
- Motor Voltage (Amp Draw)**  
120V 60Hz 1PH (0.6), 230V 50Hz 1PH (0.3)
- Hall Effect Max. Input Frequency** 100 KHz
- Pulse Duration Required** 10 milliseconds  
Minimum duration required for pump to read signal.
- Power Cord Type** 120V 60Hz SJTOWA, 230V 50Hz H05RN-F
- Power Cord Plug End** 120V 60Hz 5-15P, 230V 50Hz CEE7/7
- Power Cord Length** 6 ft (1.8 m)
- Classification** Indoor/Outdoor

# S SERIES SPECIFICATIONS

## MATERIALS OF CONSTRUCTION

**All Housings** Polycarbonate

**Pump Tube (S30)** Santoprene® (FDA approved), or Versilon®

**Pump Tube (S40, S50)** Santoprene® (FDA approved)

**Check Valve Duckbill (S30)** Santoprene® (FDA approved), or Pellethane®

**Ball Check Valve Components (S40, S50)**

- Ceramic ball (FDA approved); Tantalum spring; FKM seat & O-ring **OR**
- Ceramic ball (FDA approved); Stainless steel spring; EPDM seat; Santoprene® O-ring

**Pump Head Rollers (S30, S40)** Polyethylene **(S50)** Polycarbonate

**Guide Rollers (S50)** Polyethylene

**Suction/Discharge Tubing, Ferrules 1/4" & 6 mm** Polyethylene (FDA approved)

**Tube Fittings, Injection Fittings** PVC or Polypropylene (both NSF listed)

**Connecting Nuts** PVC or Polypropylene (both NSF listed)

**3/8" Adapter (S30)** PVC or Polypropylene (both NSF listed)

**Suction Line Strainer and Cap** PVC or Polypropylene (both NSF listed); ceramic weight

**All Fasteners** Stainless steel

**Pump Head Latches (S30)** Polypropylene **(S40)** Stainless steel

**Pump Head Thumbscrews (S50)** Stainless steel and PVC

**Leak Detect Components (S30, S40)** Hastelloy® **(S50)** Hastelloy® and stainless steel

**Pump Head Support and Transition Sleeve (S50)** Santoprene®

**Tube Pull (S50)** PVC

NOTE: Refer to the chemical guide for material compatibility.

Santoprene® is a registered trademark of Exxon Mobil Corporation. Versilon® is a registered trademark of Saint-Gobain Performance Plastics. Pellethane® is a registered trademark of Lubrizol Advanced Materials, Inc. Hastelloy® is a registered trademark of Haynes International, Inc.

## ACCESSORIES

### S30 Models

- 3 Connecting Nuts 1/4" & 3 Ferrules 1/4" or 6 mm *Europe* or 3 Connecting Nuts & 2 Adapters 3/8"
- 1 Injection Fitting 25 psi (1.7 bar) max. or 1 Duckbill Check Valve 100 psi (6.9 bar) max.
- 1 Weighted Suction Line Strainer 1/4", 3/8" or 6 mm *Europe*
- 20' Suction/Discharge Tubing 1/4" or 3/8", white or UV black or 20' Suction/Discharge Tubing 6 mm white *Europe*
- 1 Additional Pump Tube
- 2 Additional Latches
- 1 Mounting Bracket
- 1 Quick Start Guide

### S40, S50 Models

- 3 Connecting Nuts & 2 Adapters 3/8"
- 1 Ball Check Valve 3/8"
- 1 Weighted Suction Line Strainer 3/8"
- 20' Suction/Discharge Tubing 3/8", white or UV black
- 1 Additional Pump Tube
- 1 Mounting Bracket
- 1 Quick Start Guide

Download S Series Manual [www.stenner.com](http://www.stenner.com)

## FLOW RATE OUTPUTS

### 25 psi (1.7 bar) maximum

Model	Item Number Prefix	Pump Tube	Turndown Ratio	Gallons per Day	Gallons per Hour	Ounces per Hour	Ounces per Minute	Liters per Day	Liters per Hour	Milliliters per Hour	Milliliters per Minute
S3003	<b>S3003</b>	3	100:1	0.40-40.0	0.017-1.67	2.13-213.0	0.036-3.56	1.51-151.0	0.063-6.31	63.09-6309.0	1.05-105.0
S3004	<b>S3004</b>	4	100:1	0.60-60.0	0.025-2.50	3.20-320.0	0.053-5.33	2.27-227.0	0.095-9.46	94.64-9464.0	1.58-158.0
S3005	<b>S3005</b>	5	100:1	0.85-85.0	0.035-3.54	4.53-453.0	0.076-7.56	3.22-322.0	0.134-13.41	134.07-13,407.0	2.23-223.0
S405X	<b>S405X</b>	5X	100:1	1.5-150.0	0.06-6.25	8.0-800.0	0.13-13.33	5.7-567.0	0.24-23.66	236.59-23,659.0	3.94-394.0
S505G	<b>S505G</b>	5G	100:1	3.2-315.0	0.133-13.13	17.07-1680.0	0.284-28.00	12.11-1192.0	0.505-49.68	504.72-49,684.0	8.41-828.0

Approximate Outputs @ 50/60Hz

### 100 psi (6.9 bar) maximum

Model	Item Number Prefix	Pump Tube	Turndown Ratio	Gallons per Day	Gallons per Hour	Ounces per Hour	Ounces per Minute	Liters per Day	Liters per Hour	Milliliters per Hour	Milliliters per Minute
S3001	<b>S3001</b>	1	100:1	0.05-5.0	0.002-0.21	0.27-27.0	0.004-0.44	0.19-19.0	0.008-0.79	7.89-789.0	0.13-13.0
S3002	<b>S3002</b>	2	100:1	0.17-17.0	0.007-0.71	0.91-91.0	0.015-1.51	0.64-64.0	0.027-2.68	26.81-2681.0	0.45-45.0
S3007	<b>S3007</b>	7	100:1	0.40-40.0	0.017-1.67	2.13-213.0	0.036-3.56	1.51-151.0	0.063-6.31	63.09-6309.0	1.05-105.0
S407X	<b>S407X</b>	7X	100:1	0.60-60.0	0.03-2.50	3.2-320.0	0.053-5.34	2.3-227.0	0.09-9.46	94.64-9464.0	1.58-158.0
S507G	<b>S507G</b>	7G	100:1	1.3-125.0	0.054-5.21	6.93-667.0	0.116-11.11	4.92-473.0	0.205-19.72	205.04-19,716.0	3.42-329.0

Approximate Outputs @ 50/60Hz

**!** NOTICE: The information within this chart is solely intended for use as a guide. The output data is an approximation based on pumping water under a controlled testing environment. Many variables can affect the output of the pump. Stenner Pump Company recommends that all metering pumps undergo field calibration by means of analytical testing to confirm their outputs. The information contained in this flyer is not intended for specific application purposes. Stenner Pump Company reserves the right to make changes to prices, products, and specifications at any time without prior notice.