

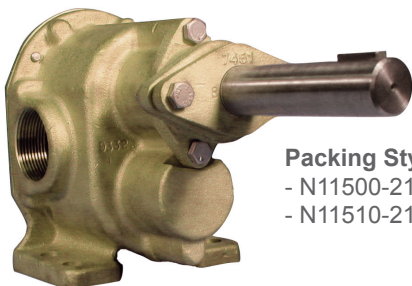


# OBERDORFER PUMPS

by Gardner Denver

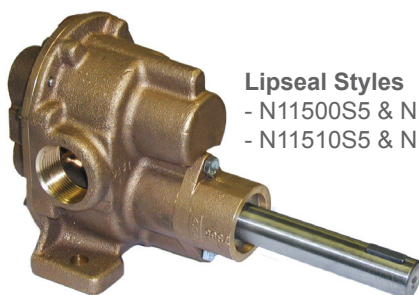
## Bronze Pedestal Rotary Gear Pumps N11500 • N11510 Series

### 1 1/4" NPT Ports Standard



#### Packing Styles

- N11500-21 Upper Drive
- N11510-21 Lower Drive



#### Lipseal Styles

- N11500S5 & N1100S3 - Upper Drive
- N11510S5 & N11510S3 - Lower Drive

#### FEATURES:

- Bronze Corrosion Resistant Castings
- Stainless Steel Shafts & Fasteners
- Self-Lubricating Carbon Bearings
- Acrylic Graphite Packing or FKM-PTFE or NBR Lip
- For Mechanical Seals, see Models N11HDM
- For Heavy Pulley loads, see Model N11HDP

#### LIQUIDS AND TEMPERATURE:

Service life will be increased substantially if the liquid pumped is clean and has a lubricity value. These pumps have extremely close tolerances. Fine abrasives like sand, silt, or powders in suspension will destroy pumping ability.

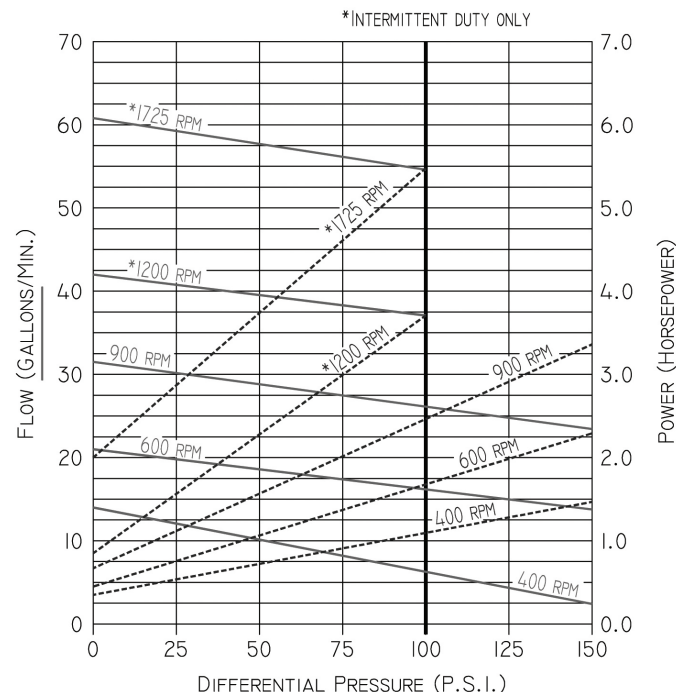
Liquids compatible with bronze, stainless steel and the acrylic graphite packing can be pumped. Solvent resistant packings and PTFE packings are also available. See a chemical compatibility table or check factory. When possible, flush the pump with water after using.

Temperature extremes are detrimental to service life and should be avoided. Basic metals of construction allow temperature range of -40° to 400° F. the acrylic graphite packing is rated to 500° F. Freezing liquid in the pump can deform or damage the pump.

Viscous liquids such as molasses or oils require a lower pumping speed, in extreme cases as low as 200 RPM. Consult factory for recommended speeds and increased horsepower requirements. Large suction lines are required to prevent cavitation which can cause pump destruction. Liquids with specific gravities heavier than water such as dry cleaning fluids require an increase in motor horsepower

#### PERFORMANCE:

CAPACITY WATER AT 60°F



er directly proportional to the increase in specific gravity over water.

#### DRIVE:

Either direct drive with flexible coupling or pulley drive can be used. For pulley driven pumps a pillow block bearing must be used at the drive shaft end to absorb the belt forces. The drive shaft is sufficiently long enough to accommodate a pillow block in addition to the pulley.

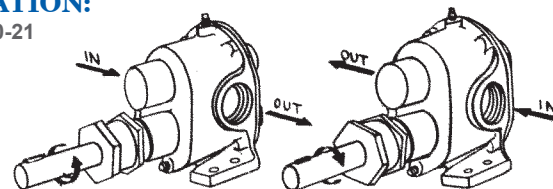
Correct alignment is absolutely essential for satisfactory pump life. Recheck alignment after the piping has been connected to the pump.

#### SUCTION LIFT:

A rotary gear pump is capable of lifting water on the suction side as high as 20 feet. Though gear pumps are self-priming, a foot valve is recommended. For pumping water directly from streams or ponds, a wire mesh strainer must be used at the beginning of the suction line to prevent stones from entering the pump. Strainer and foot valve are commercially available as combination units.

#### ROTATION:

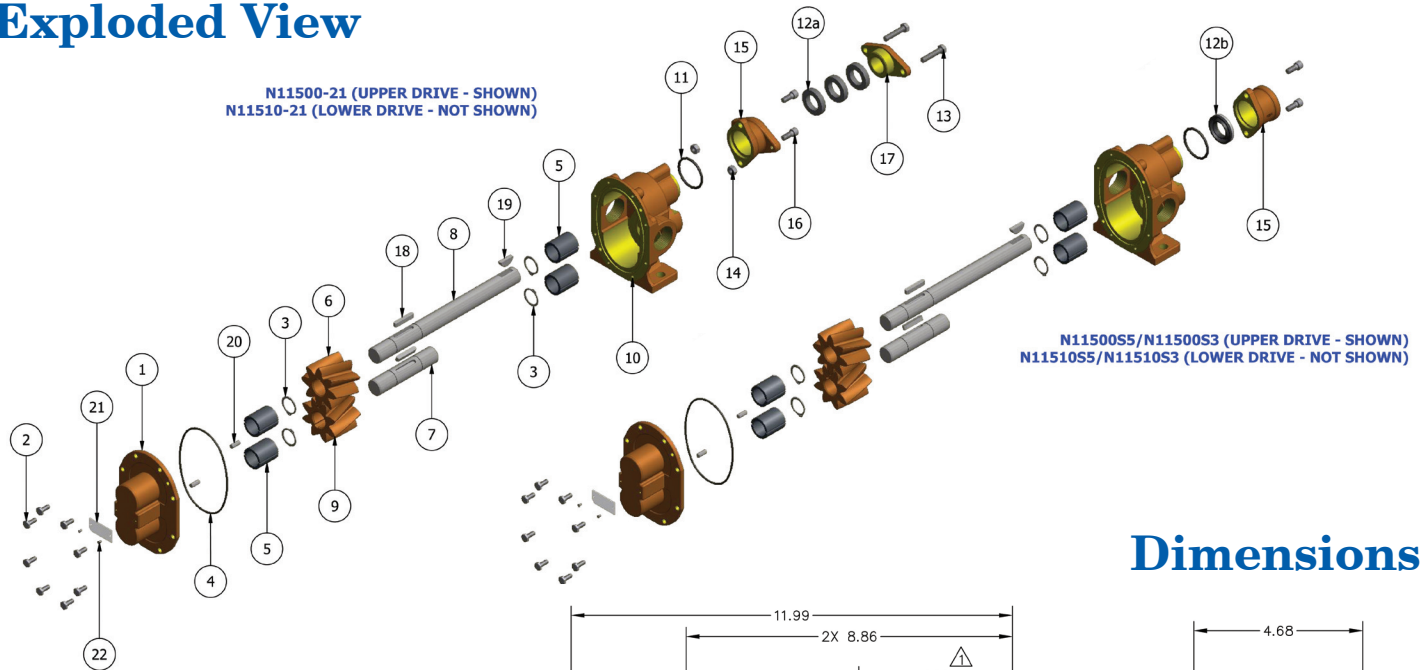
N11510-21 shown



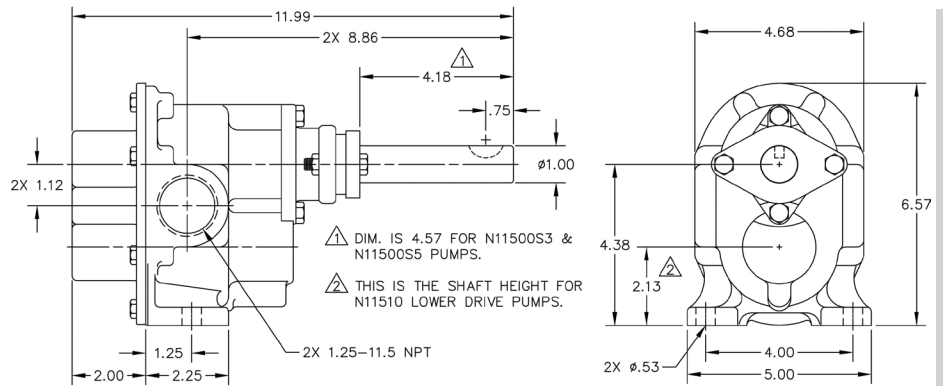
# Bronze Pedestal Rotary Gear Pumps

N11500 • N11510 Series

## Exploded View



## Dimensions



## Parts List

	1	2	3	4	5	6	7	8	9	10	11	12a
	Cover	Screw	Snap Ring	O-Ring	Bearing	Drive Gear	Idle Shaft	Drive Shaft	Idle Gear	Body	O-Ring	Packing
Model	Qty. 1	Qty. 8	Qty. 4	Qty. 1	Qty. 4	Qty. 1	Qty. 1	Qty. 1	Qty. 1	Qty. 1	Qty. 1	Qty. 3
N11500-21	9333NN5N	5393	7651	9797-158	5108	9833	7652	5685	9834	9331NG7N	6515	7624
N11510-21										9331NG8N		9797-224
N11500S5										9331NG7N		
N11510S5										9331NG8N		
N11500S3										9331NG7N		
N11510S3										9331NG8N		

	12b	13	14	15	16	17	18	19	20	21	22	Repair Kit
	Lip Seal	Screw	Nut	Gland	Screw	Seal Adapter	Key	Key	Dowel Pin	Tag	Tag Screw	
Model	Qty. 1	Qty. 2	Qty. 2	Qty. 1	Qty. 2	Qty. 1	Qty. 2	Qty. 1	Qty. 2	Qty. 1	Qty. 2	
N11500-21	N/A	9905	8395	7451	6827	9904	6518	5576	8597	9344	9345	10642
N11510-21	N/A					N/A						9853
N11500S5	7262	N/A	N/A	9853	6827	N/A	6518	5576	8597	9344	9345	11058
N11510S5	6500											11048
N11500S3												11058

Repair Kit contains items 3, 4, 5, 6, 7, 8, 9, 12 & 18. For shaft and gear subassemblies only refer to kit 12015.



# OBERDORFER PUMPS

by Gardner Denver

5900 Firestone Drive, Syracuse, NY 13206

Phone: (800) 448-1668; (315) 437-0361 • Fax: (315) 463-9561

Visit [www.oberdorferpumps.com](http://www.oberdorferpumps.com) to find in-depth descriptions of the world's leading high-quality, dependable pumps.

Due to ongoing product improvements, data shown here is subject to change without notice. Contact Oberdorfer Pumps for latest specifications.

N11500.122014