



# MARCH PUMPS

1819 PICKWICK AVE., GLENVIEW, IL 60026-1306, U.S.A  
 PHONE: (847) 729-5300 - FAX: (847) 729-7062  
 WWW.MARCHPUMP.COM

### DESCRIPTION:

The [TE-5S-MD](#) is a centrifugal magnetic drive pump, eliminating the need for a shaft seal. It is serviceable with a screwdriver.

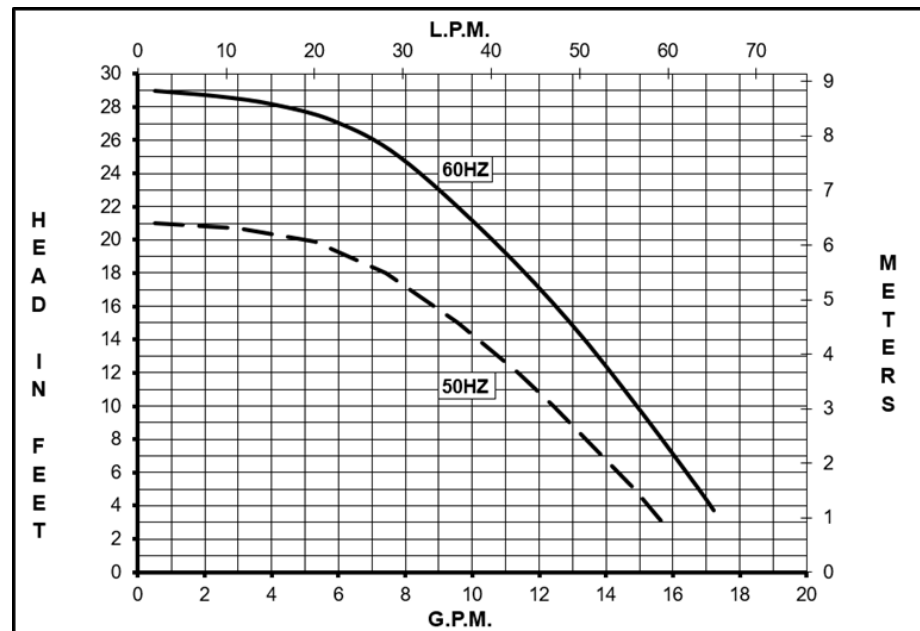
### OPERATION:

Pumps are not self-priming, lack a suction lift, and thus require a **flooded suction**. Pumps **cannot be run dry** because the impeller requires the liquid being pumped for lubrication. For liquids with a specific gravity greater than water, have a higher viscosity, or for elevated temperatures, a trimmed impeller may be necessary. For application assistance, contact March Pump.

### ELECTRICAL:

TE-5S-MD motor are dual voltage, 1 phase 115/230 Volt, 60 Hz, 115/220V, 50Hz, or 3 phase 230/460 Volt, 60/50 Hz. Motors are totally enclosed fan cooled, rated for continuous duty, have a conduit box for electrical connections, and neither is rated for variable speed.

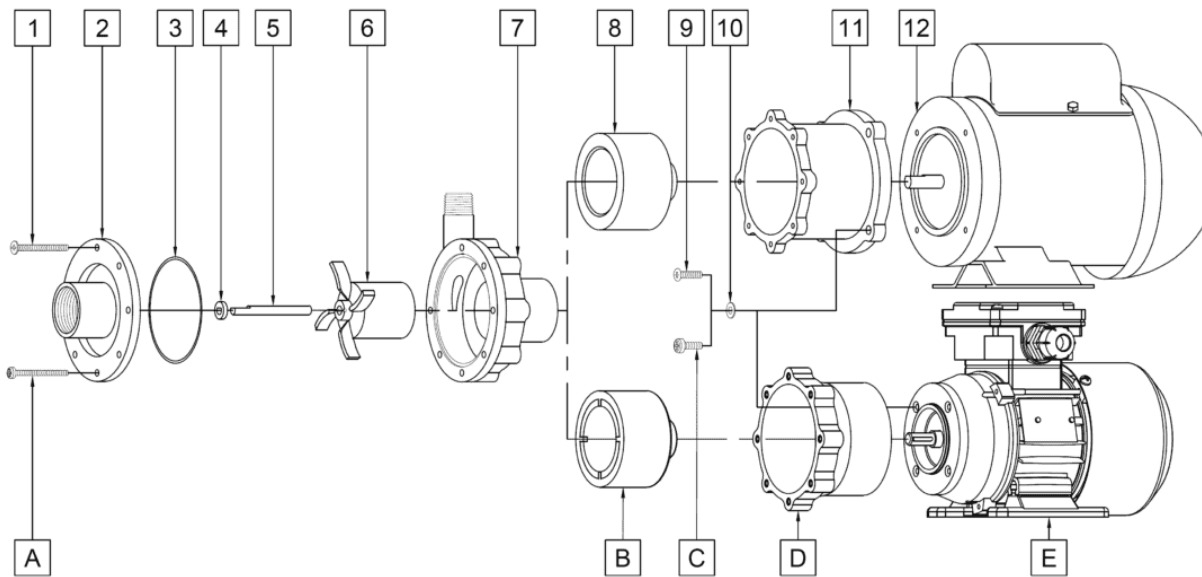
## TE-5S-MD 1&3 Phase



Specifications		TE-5SMD
Product	1Ph	0150-0214-0300
	3Ph	0150-0220-0300
Inlet-Outlet		1" FPT-1/2" MPT
Max Internal Pressure		200PSI (1378 kPa)
Max Liquid Temperature		250F (121C)

Model	60Hz											50Hz										
	Max Flow		Max Head			Electrical						Max Flow		Max Head			Electrical					
	GPM	LPM	FT	PSI	M	Ph	V	A	HP	kW	RPM	GPM	LPM	Feet	PSI	M	Ph	V	A	HP	kW	RPM
TE-5SMD	18	68.1	29	12.6	8.85	1	115/230	2.6/1.3	1/5	0.149	3450	15.9	60.5	20.7	8.96	6.3	1	115/220	2.4/1.2	1/5	0.149	2850
TE-5S-MD	18	68.1	29	12.6	8.85	3	230/460	0.7/0.35	0.17	0.12	3450	15.9	60.5	20.7	8.96	6.3	3	230/460	2.4/1.2	0.17	0.12	2850

All specifications & data are based on pumping water & are intended as a guideline only. Specifications may vary with different motors.



**NOTE:** When attaching the Drive Magnet to the motor shaft, position the face of the Drive Magnet 3/32 inch below the face of the Motor Bracket.

TE-5S-MD 1 Ph				TE-5S-MD 3 Ph			
Item	Part Number	QTY REQ	Description	Item	Part Number	QTY REQ	Description
1	0150-0021-1000	7	#8-32 x 1-3/4 LG Screw (Stainless)	A	0150-0221-1000	7	M4 x 1.77" Long Screw (Stainless)
2	0150-0111-0010	1	Cover with 1" FPT Inlet (316 Stainless)	2	0150-0111-0010	1	Cover with 1" FPT Inlet (316 Stainless)
3	0750-0986-1000	1	0.078 CS x 2.834 ID O-Ring (Viton)	3	0750-0986-1000	1	0.078 CS x 2.834 ID O-Ring (Viton)
4	0130-0028-1000	1	Thrust Washer (Ceramic)	4	0130-0028-1000	1	Thrust Washer (Ceramic)
5	0130-0024-1000	1	Shaft (Ceramic)	5	0130-0024-1000	1	Shaft (Ceramic)
6	0150-0114-0400	1	Impeller with Carbon Bushing (316 Stainless)	6	0150-0114-0400	1	Impeller with Carbon Bushing (316 Stainless)
7	0150-0110-0010	1	Rear Housing with 1/2" MPT Outlet and Ceramic Thrust Washer (316 Stainless)	7	0150-0110-0010	1	Rear Housing with 1/2" MPT Outlet and Ceramic Thrust Washer (316 Stainless)
8	0150-0176-0300	1	Drive Magnet with 0.375 Inch Bore	B	0150-0178-0200	1	Drive Magnet with 9MM Bore
9	0150-0050-1000	4	#10-32 x 3/4 LG. Screw (Stainless)	C	0150-0222-1000	4	M5 x .62" Long Screw (Stainless)
10	0150-0051-1000	4	#10 Washer (Stainless)	10	0150-0051-1000	4	#10 Washer (Stainless)
11	0150-0070-0100	1	NEMA Motor Bracket (Plastic)	D	0150-0177-1000	1	IEC Motor Bracket (Plastic)
12	0150-0213-1000	1	Motor (Weg), TEFC, 115/230V, 50/60Hz	E	0150-0218-1000	1	Motor, TEFC, IEC, 3 Phase, 230/460V, 50/60 Hz
W	0150-0232-0100	1	Wet End Kit: Items (1,2,3,4,5,6,7)	W	0150-0246-0100	1	Wet End Kit: Items (A,2,3,4,5,6,7)

Materials in contact with the liquid: 316 Stainless Steel, Carbon, Viton, Ceramic.

NOTE: Contact Factory for other materials and/or parts not listed.

Special voltage motors are available upon special order.

**LIMITED WARRANTY:** March pumps are guaranteed only against defects in workmanship or materials for a period of one year from date of manufacture pumping water. For the complete warranty and to register online go to [www.marchpump.com/warranty-registration](http://www.marchpump.com/warranty-registration)

For the General Installation Manual, see this link <https://www.marchpump.com/wp-content/uploads/2019/07/march-pump-general-installation-guide-0750-040.pdf>

Or Scan QR Code



0150-0060-1600-9/25/2023