



MARCH PUMPS

1819 PICKWICK AVE., GLENVIEW, IL 60026-1306, U.S.A
PHONE: (847) 729-5300 - FAX: (847) 729-7062
WWW.MARCHPUMP.COM

DESCRIPTION:

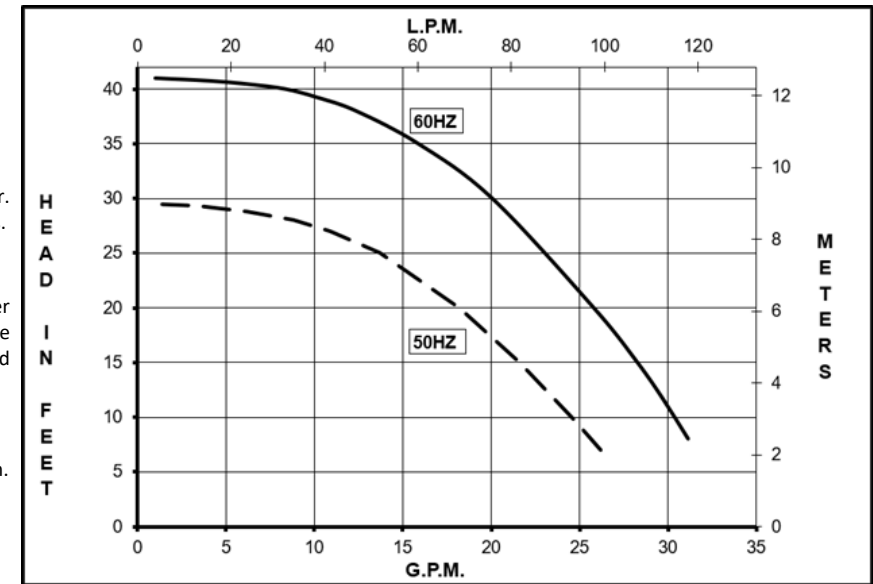
Series 5.5 are centrifugal magnetic drive pumps, eliminating the need for a shaft seal. Pumps can be serviced with a screwdriver. Screws should be tightened in sequence and uniformly. Do not over tighten the screws or you may crush the plastic housing bosses.

OPERATION:

Pumps are not self-priming, lack a suction lift, and thus require a **flooded suction**. Pumps **cannot be run dry** because the impeller requires the liquid being pumped for lubrication. The direction of motor rotation should be clockwise when facing the inlet of the pump. For liquids with a specific gravity greater than water, have a higher viscosity, or for elevated temperatures, a trimmed impeller may be necessary. For application assistance, contact March Pump.

ELECTRICAL:

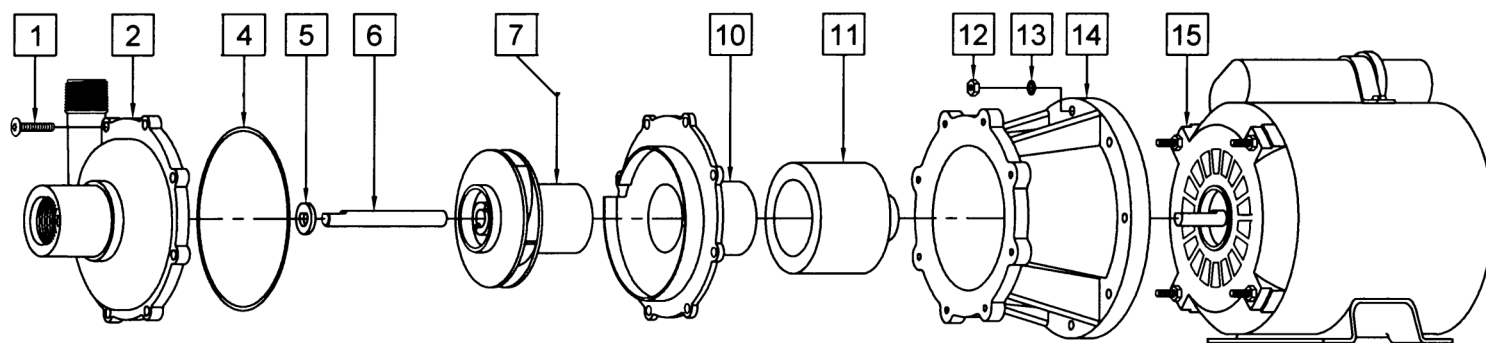
Pumps are 115/230V, 1 phase, air-cooled. Motors are Air Cooled and are U.L. listed as well as rated for continuous operation. Motors have a junction box for electrical connections. Explosion proof and special voltage motors are available upon special order.




| Specifications | | TE-5.5C-MD-AC | TE-5.5K-MD-AC |
|------------------------|---------|-------------------|-------------------|
| Product | 1 Phase | 0151-0027-0200 | 0151-0027-0400 |
| Inlet-Outlet | | 1" FPT - 3/4" MPT | 1" FPT - 3/4" MPT |
| Max Internal Pressure | | 50 psi (344 kPa) | 75 psi (517 kPa) |
| Max Liquid Temperature | | 190F (87C) | 200F (93C) |

| | 60Hz | | | | | | | | | | | 50Hz | | | | | | | | | | |
|---------------|----------|-----|----------|------|------|------------|---------|---------|-----|-------|------|----------|-----|----------|------|---|------------|---------|---------|-----|-------|------|
| | Max Flow | | Max Head | | | Electrical | | | | | | Max Flow | | Max Head | | | Electrical | | | | | |
| Model | GPM | LPM | FT | PSI | M | Ph | V | A | HP | kW | RPM | GPM | LPM | Feet | PSI | M | Ph | V | A | HP | kW | RPM |
| TE-5.5C-MD-AC | 30 | 114 | 41 | 17.8 | 12.5 | 1 | 115/230 | 2.7/1.4 | 1/5 | 0.149 | 3450 | 27 | 102 | 29.5 | 12.8 | 9 | 1 | 115/230 | 2.9/1.4 | 1/5 | 0.149 | 2850 |
| TE-5.5K-MD-AC | 30 | 114 | 41 | 17.8 | 12.5 | 1 | 115/230 | 2.7/1.4 | 1/5 | 0.149 | 3450 | 27 | 102 | 29.5 | 12.8 | 9 | 1 | 115/230 | 2.9/1.4 | 1/5 | 0.149 | 2850 |

All specifications & data are based on pumping water & are intended as a guideline only. Specifications may vary with different motors.



NOTE: When attaching the Drive Magnet to the motor shaft, position the face of the Drive Magnet flush with the face of the Motor Bracket.

| TE-5.5C-MD-AC | | | | TE-5.5K-MD-AC | | | |
|---|----------------|------------------------------------|---|--|----------------|---------|---|
| Item | Part Number | QTY REQ | Description | Item | Part Number | QTY REQ | Description |
| 1 | 0135-0180-1000 | 8 | #10-32 x 1" Long Screw (Stainless) | 3 | 0135-0180-1000 | 8 | #10-32 x 1" Long Screw (Stainless) |
| 2 | 0151-0027-1000 | 1 | Front Housing (Polypropylene) | 2 | 0151-0044-1000 | 1 | Front Housing (Kynar) |
| 3 | 0153-0015-1000 | 1 | 3/32" CS x 4-7/16" OD "O" Ring (Viton) | 3 | 0153-0015-1000 | 1 | 3/32" CS x 4-7/16" OD "O" Ring (Viton) |
| 5 | 0155-0009-1000 | 1 | Thrust Washer (Ceramic) | 5 | 0155-0009-1000 | 1 | Thrust Washer (Ceramic) |
| 6 | 0153-0007-1000 | 1 | Shaft (Ceramic) | 6 | 0153-0007-1000 | 1 | Shaft (Ceramic) |
| 7 | 0151-0029-0500 | 1 | Impeller (Polypropylene) | 7 | 0151-0046-0300 | 1 | Impeller (Kynar) |
| 10 | 0151-0028-0100 | 1 | Rear Housing (Polypropylene) with Ceramic Thrust Washer | 10 | 0151-0045-0100 | 1 | Rear Housing (Kynar) with Ceramic Thrust Washer |
| 11 | 0151-0061-0200 | 1 | Drive Magnet | 11 | 0151-0061-0200 | 1 | Drive Magnet |
| 12 | 0410-0039-1000 | 4 | Hex Nut (Brass) | 12 | 0410-0039-1000 | 4 | Hex Nut (Brass) |
| 13 | 0620-0010-1000 | 4 | Lock Washer (Plastic) | 13 | 0620-0010-1000 | 4 | Lock Washer (Plastic) |
| 14 | 0151-0041-0100 | 1 | Motor Bracket | 14 | 0151-0041-0100 | 1 | Motor Bracket |
| 15 | 0175-0087-1000 | 1 | 1 Phase Motor | 16 | 0175-0087-1000 | 1 | 1 Phase Motor |
| W | 0151-0069-0100 | 1 | Wet End Kit (Items: 3,4,6,7,8,9,10) | W | 0151-0070-0100 | 1 | Wet End Kit (Items: 3,4,6,7,8,9,10) |
| Materials in contact with the solution | | | | | | | |
| TE-5.5C-MD-AC | | Polypropylene, Ceramic, Viton | | | | | |
| TE-5.5K-MD-AC | | Glass Filled Kynar, Ceramic, Viton | | | | | |
| LIMITED WARRANTY: March pumps are guaranteed only against defects in workmanship or materials for a period of one year from date of manufacture pumping water. For the complete warranty and to register online go to www.marchpump.com/warranty-registration | | | | | | | |
| NOTE: Contact Factory for other materials and/or parts not listed. | | | | Explosion proof and special voltage motors are available upon special order. | | | |
| For the General Installation Manual, see this link https://www.marchpump.com/wp-content/uploads/2019/07/march-pump-general-installation-guide-0750-040.pdf or Scan QR Code | | | | | | | |
|  | | | | | | | |

