



# MARCH PUMPS

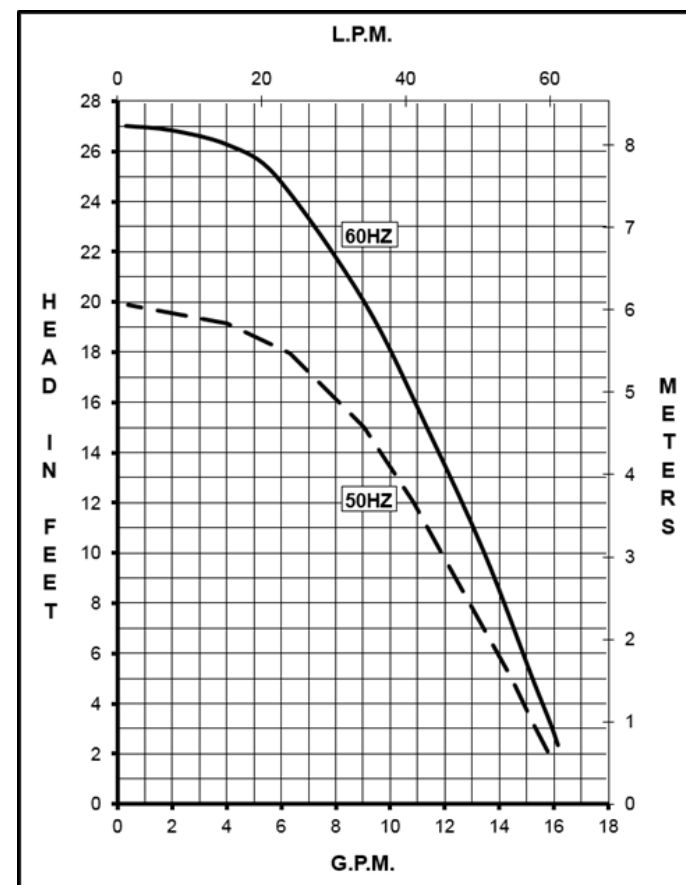
1819 PICKWICK AVE., GLENVIEW, IL 60026-1306, U.S.A  
 PHONE: (847) 729-5300 - FAX: (847) 729-7062  
 WWW.MARCHPUMP.COM

**DESCRIPTION:** [Series 5 are centrifugal magnetic drive pumps](#), eliminating the need for a shaft seal. All are serviceable with a screwdriver.

**OPERATION:** Pumps are not self-priming, lack a suction lift, and thus require a **flooded suction**. Pumps **cannot be run dry** because the impeller requires the liquid being pumped for lubrication. For liquids with a specific gravity greater than water, have a higher viscosity, or for elevated temperatures, a trimmed impeller may be necessary. For application assistance, contact March Pump.

**ELECTRICAL:** Models are either 115V or 230 Volt and have a 3 ft (0.9 m) Cord. Models have U.L. listed motors, which are rated for continuous duty.

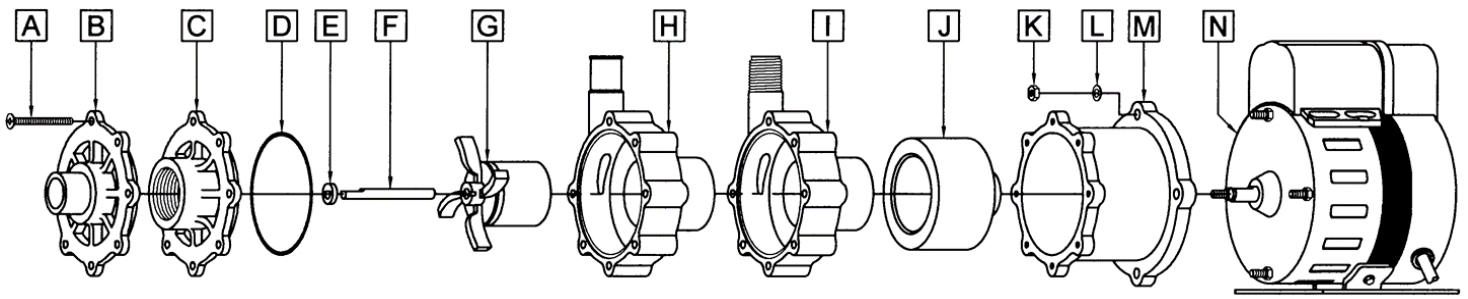
## AC-5C-MD, AC-5A-MD



Specifications		AC-5C-MD	AC-5A-MD
Product	115V	0150-0026-0100	0150-0170-0100
	230V	0150-0136-0100	0150-0170-0200
Inlet-Outlet		1" FPT- 1/2" MPT	1" OD- 3/4" OD
Max Internal Pressure		50PSI (344 kPa)	50PSI (344 kPa)
Max Liquid Temperature		190F (87C)	190F (87C)

Model	60Hz											50Hz										
	Max Flow		Max Head			Electrical						Max Flow		Max Head			Electrical					
	GPM	LPM	FT	PSI	M	Ph	V	A	HP	kW	RPM	GPM	LPM	Feet	PSI	M	Ph	V	A	HP	kW	RPM
AC-5C-MD	17	64.4	27	11.7	8.2	1	115 or 230	2.1 or 1.0	1/8	0.093	3450	15.9	60	19.7	8.5	6	1	115 or 230	2.1 or 1.0	1/8	0.093	2850
AC-5A-MD	17	64.4	27	11.7	8.2	1	115 or 230	2.1 or 1.0	1/8	0.093	3450	15.9	60	19.7	8.5	6	1	115 or 230	2.1 or 1.0	1/8	0.093	2850

All specifications & data are based on pumping water & are intended as a guideline only. Specifications may vary with different motors.



AC-5C-MD				AC-5A-MD			
Item	Part Number	QTY REQ	Description	Item	Part Number	QTY REQ	Description
A	0150-0021-1000	7	#8-32 x 1-3/4 Lg. (Stainless)	A	0150-0021-1000	7	#8-32 x 1-3/4 Lg. (Stainless)
C	0150-0032-1000	1	Cover with 1" FPT Inlet (Polypropylene)	B	0150-0150-1000	1	Cover with 1" OD Inlet (Polypropylene)
D	0750-0987-1000	1	0.078 CS x 2.834 ID O Ring (Buna N)	D	0750-0987-1000	1	0.078 CS x 2.834 ID O Ring (Buna N)
E	0130-0028-1000	1	Thrust Washer (Ceramic)	E	0130-0028-1000	1	Thrust Washer (Ceramic)
F	0130-0024-1000	1	Shaft (Ceramic)	F	0130-0024-1000	1	Shaft (Ceramic)
G	0150-0030-0100	1	Impeller with Ceramic Magnet (Polypropylene and Ceramic Magnet)	G	0150-0030-0100	1	Impeller with Ceramic Magnet (Polypropylene and Ceramic Magnet)
I	0150-0031-0100	1	Rear Housing with 1/2" MPT Outlet and Ceramic Thrust Washer (Polypropylene and Ceramic)	H	0150-0159-0100	1	Rear Housing with 3/4" OD Outlet and Ceramic Thrust Washer (Polypropylene and Ceramic)
J	0150-0081-0100	1	Drive Magnet	J	0150-0081-0100	1	Drive Magnet
K	0625-0024-1000	4	#10-32 Hex Nut (Stainless)	K	0625-0024-1000	4	#10-32 Hex Nut (Stainless)
L	0802-0006-1000	4	#10 Washer (Stainless)	L	0802-0006-1000	4	#10 Washer (Stainless)
M	0150-0070-0100	1	Motor Bracket (Plastic)	M	0150-0070-0100	1	Motor Bracket (Plastic)
N	0150-0027-1000	1	Motor, 115V, 50/60Hz	N	0150-0027-1000	1	Motor, 115V, 50/60Hz
N	0150-0040-1000	1	Motor, 230V, 50/60Hz	N	0150-0040-1000	1	Motor, 230V, 50/60Hz
W	0150-0147-0200	1	Wet End Kit: Items (A,B, D, E, F, G, I)				

NOTE: Contact Factory for other materials and/or parts not listed.

Special voltage motors are available upon special order.

**Materials in contact with the liquid :** Polypropylene, Ceramic Buna N, and Ceramic Magnet

**LIMITED WARRANTY:** March pumps are guaranteed only against defects in workmanship or materials for a period of one year from date of manufacture pumping water. For the complete warranty and to register online go to [www.marchpump.com/warranty-registration](http://www.marchpump.com/warranty-registration)

For the General Installation Manual, see this link <https://www.marchpump.com/wp-content/uploads/2019/07/march-pump-general-installation-guide-0750-040.pdf>

Or Scan QR Code



0150-0074-1000-9.25.2023