



# MARCH PUMPS

1819 PICKWICK AVE., GLENVIEW, IL 60026-1306, U.S.A  
 PHONE: (847) 729-5300 - FAX: (847) 729-7062  
 WWW.MARCHPUMP.COM

## DESCRIPTION:

Series 6 are centrifugal magnetic drive pumps, eliminating the need for a shaft seal. Pumps can be serviced with an adjustable wrench. See the back page for a breakdown of parts.

## OPERATION:

Pumps are not self-priming, lack a suction lift, and thus require a **flooded suction**. Pumps **cannot be run dry** because the impeller requires the liquid being pumped for lubrication. The direction of motor rotation should be clockwise when facing the inlet of the pump. For liquids with a specific gravity greater than water, have a higher viscosity, or for elevated temperatures, a trimmed impeller may be necessary. For application assistance, contact March Pump.

## ELECTRICAL:

TE-6-MD pumps are 115/230 Volt, 50/60 Hz, 1 phase or 230/460 Volt 60 Hz, 3 phase and 190/380 Volt 50Hz. Motors are totally enclosed fan cooled and have a conduit box. Motors are U.L. listed as well as rated for continuous operation.

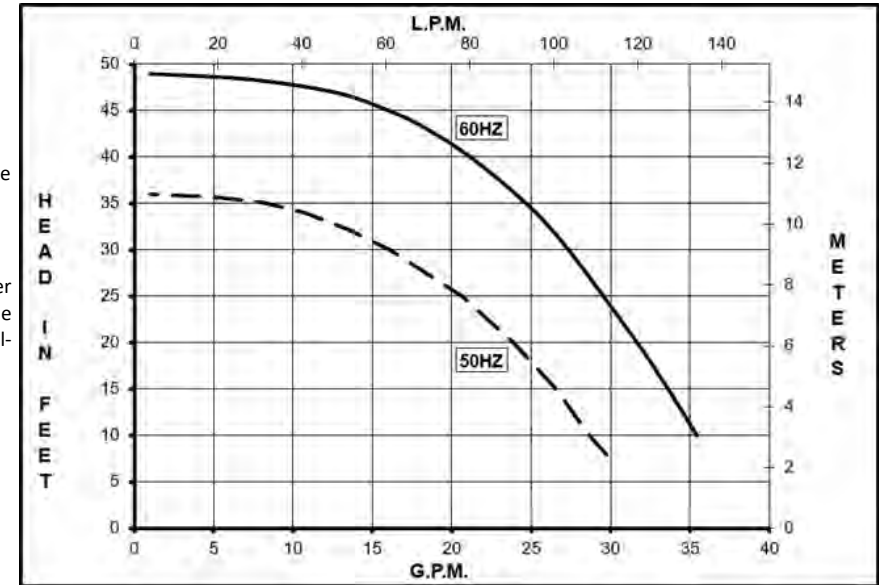
Note: The P/N's and packed weight below are with the metal motor bracket.

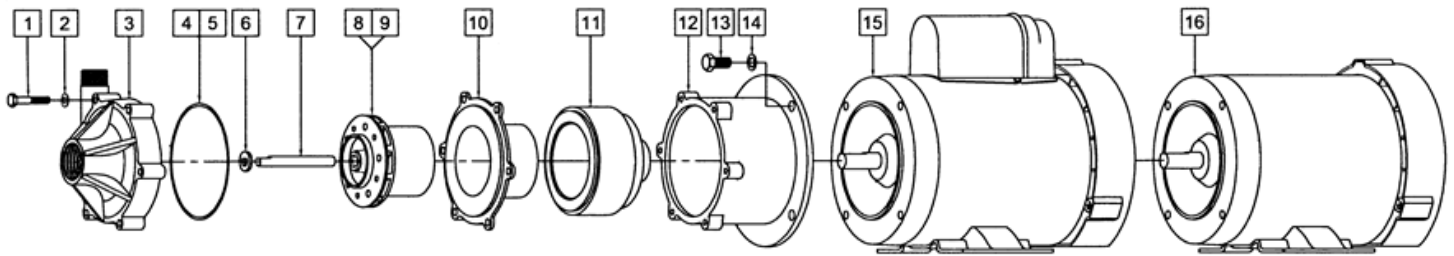
Specifications		TE-6T-MD	TE-6K-MD	TE-6P-MD
Product	1 Phase	0153-0164-0100	0153-0167-0100	0153-0161-0100
	3 Phase	0153-0142-0100	0153-0144-0100	0153-0140-0100
Inlet-Outlet		1" FPT - 3/4" MPT	1" FPT - 3/4" MPT	1" FPT - 3/4" MPT
Max Internal Pressure		50 psi (344 kPa)	75 psi (517 kPa)	50 psi (344 kPa)
Max Liquid Temperature		190F (87C)	200F (93C)	190F (87C)

Model	60Hz											50Hz											Packed Weight Pounds
	Max Flow		Max Head			Electrical						Max Flow		Max Head			Electrical						
	GPM	LPM	FT	PSI	M	Ph	V	A	HP	kW	RPM	GPM	LPM	Feet	PSI	M	Ph	V	A	HP	kW	RPM	
TE-6T-MD	38	144	49	21.2	14.9	1	115/230	7.5/3.7	1/2	0.373	3450	30	113.5	36	15.6	11	1	115/230	8.6/4.3	1/2	0.373	2850	36.75
TE-6T-MD	38	144	49	21.2	14.9	3	230/460	1.7/.8	1/2	0.373	3450	30	113.5	36	15.6	11	3	190/380	1.9/.9	1/2	0.373	2850	30.7
TE-6K-MD	38	144	49	21.2	14.9	1	115/230	7.5/3.7	1/2	0.373	3450	30	113.5	36	15.6	11	1	115/230	8.6/4.3	1/2	0.373	2850	36.5
TE-6K-MD	38	144	49	21.2	14.9	3	230/460	1.7/.8	1/2	0.373	3450	30	113.5	36	15.6	11	3	190/380	1.9/.9	1/2	0.373	2850	30.45
TE-6P-MD	38	144	49	21.2	14.9	1	115/230	7.5/3.7	1/2	0.373	3450	30	113.5	36	15.6	11	1	115/230	8.6/4.3	1/2	0.373	2850	36.75
TE-6P-MD	38	144	49	21.2	14.9	3	230/460	1.7/.8	1/2	0.373	3450	30	113.5	36	15.6	11	3	190/380	1.9/.9	1/2	0.373	2850	30.7

All specifications & data are based on pumping water & are intended as a guideline only. Specifications may vary with different motors.

## TE-6T-MD, TE-6K-MD, TE-6P-MD with Weg Motors





Note: When attaching the Drive Magnet to the motor shaft, position the face of the Drive Magnet 3/32 inch below the face of the Motor Bracket.

**TE-6T-MD**

**TE-6K-MD**

Item	Part Number	QTY REQ	Description	Item	Part Number	QTY REQ	Description
1	0153-0064-1000	6	1/4"-20 x 1-3/4" Lg. Screw (Stainless)	1	0153-0064-1000	6	1/4"-20 x 1-3/4" Lg. Screw (Stainless)
2	0155-0021-1000	6	1/4" ID x 1/2" OD Washer (Stainless)	2	0155-0021-1000	6	1/4" ID x 1/2" OD Washer (Stainless)
3	0153-0002-1000	1	Front Housing (Ryton)	3	0153-0042-1000	1	Front Housing (Kynar)
5	0153-0015-1000	1	3/32" CS x 4-7/16" 5 OD "O" Ring (Viton)	5	0153-0015-1000	1	3/32" CS x 4-7/16" 5 OD "O" Ring (Viton)
6	0155-0009-1000	1	Thrust Washer (Ceramic)	6	0155-0009-1000	1	Thrust Washer (Ceramic)
7	0153-0007-1000	1	Shaft (Ceramic)	7	0153-0007-1000	1	Shaft (Ceramic)
9	0153-0003-0400	1	Impeller w Ryton/Teflon/Carbon Bushing (Polypropylene)	9	0153-0043-0500	1	Impeller with Carbon Bushing (Kynar)
10	0153-0005-0100	1	Rear Housing w/Ceramic Thrust Washer (Ryton)	10	0153-0041-0100	1	Rear Housing w/Ceramic Thrust Washer (Kynar)
11	0153-0035-0100	1	Drive Magnet	11	0153-0035-0100	1	Drive Magnet
12A	0153-0093-0010	1	Motor Bracket (Aluminum) (Standard)	12A	0153-0093-0010	1	Motor Bracket (Aluminum) (Standard)
12B	0153-0001-0100	1	Motor Bracket (Ryton) (Option)	12B	0153-0001-0100	1	Motor Bracket (Ryton) (Option)
12C	0153-0147-0100	1	Motor Bracket (Noryl) (Option)	12C	0153-0147-0100	1	Motor Bracket (Noryl) (Option)
13	0155-0017-1000	4	3/8"-16 x 3/4" Lg. Screw (Stainless)	13	0155-0017-1000	4	3/8"-16 x 3/4" Lg. Screw (Stainless)
14	0155-0019-1000	4	3/8" ID x 5/8" OD Washer (Stainless)	14	0155-0019-1000	4	3/8" ID x 5/8" OD Washer (Stainless)
15	0153-0158-1000	1	1 Phase Motor	15	0153-0158-1000	1	1 Phase Motor
16	0153-0135-1000	1	3 Phase Motor	16	0153-0135-1000	1	3 Phase Motor
W	0153-0056-0100	1	Wet End Kit (Items: 1,2,3,5,6,7,9,10)	W	0153-0057-0100	1	Wet End Kit (Items: 1,2,3,5,6,7,9,10)

**TE-6P-MD**

1	0153-0064-1000	6	1/4"-20 x 1-3/4" Lg. Screw (Stainless)
2	0155-0021-1000	6	1/4" ID x 1/2" OD Washer (Stainless)
3	0153-0052-1000	1	Front Housing (Polypropylene)
5	0153-0015-1000	1	3/32" CS x 4-7/16" 5 OD "O" Ring (Viton)
6	0155-0009-1000	1	Thrust Washer (Ceramic)
7	0153-0007-1000	1	Shaft (Ceramic)
9	0153-0003-0400	1	Impeller w Ryton/Teflon/Carbon Bushing (Polypropylene)
10	0153-0072-0100	1	Rear Housing w/Ceramic Thrust Washer (Polypropylene)
11	0153-0035-0100	1	Drive Magnet
12A	0153-0093-0010	1	Motor Bracket (Aluminum) (Standard)
12B	0153-0001-0100	1	Motor Bracket (Ryton) (Option)
12C	0153-0147-0100	1	Motor Bracket (Noryl) (Option)
13	0155-0017-1000	4	3/8"-16 x 3/4" Lg. Screw (Stainless)
14	0155-0019-1000	4	3/8" ID x 5/8" OD Washer (Stainless)
15	0153-0158-1000	1	1 Phase Motor
16	0153-0135-1000	1	3 Phase Motor
W	0153-0096-0100	1	Wet End Kit (Items: 1,2,3,5,6,7,9,10)

NOTE: Contact Factory for other materials and/or parts not listed. Special voltage motors are available upon special order.

Materials in contact with the liquid:

**TE-6T-MD:** Polypropylene, Ryton, Ryton/Teflon/Carbon, Ceramic, Viton

**TE-6K-MD:** Kynar, Carbon, Ceramic, Viton

**TE-6P-MD:** Polypropylene, Ryton/Teflon/Carbon, Ceramic, Viton

LIMITED WARRANTY: March pumps are guaranteed only against defects in workmanship or materials for a period of one year from date of manufacture pumping water. For the complete warranty and to register online go to [www.marchpump.com/](http://www.marchpump.com/)