



FINISH THOMPSON INC.

VKC5.5,6,6H, 7,8,10 SERIES Sealless Non-Metallic Vertical Pumps Installation and Maintenance Instructions

Pat.No. 5,708,313

ASSEMBLY

WARNING: Magnetic field hazard. This pump contains powerful rare earth magnets. When the pump is disassembled (not connected to a motor) and the magnets are exposed, these magnets produce powerful magnetic fields. Individuals with cardiac pacemakers, implanted defibrillators, other electronic medical devices, metallic prosthetic heart valves, internal wound clips (from surgery), metallic prosthetic devices or sickle cell anemia must not handle or be in the proximity of the magnets contained inside the pump. Consult a health care provider for specific recommendations before working with this pump.

PUMPS WITH MOTORS

1. No assembly required. Simply unpack the pump and motor and examine for any signs of shipping damage. If damage is detected, save the packaging and notify the carrier immediately.
2. Ensure that lock rings are securely snapped in place and did not loosen during shipment.
3. To install the pump into the system, follow the installation instructions provided.

PUMPS WITHOUT MOTORS

Note: Finish Thompson has added extra weight (Flywheel item 35 in Figure 8) to several of our VKC Series Pumps to slow down motor start up & prevent possible magnet decoupling. It is necessary to know whether your pump was supplied with the flywheel. Flywheels are supplied with all VKC8 (54" - 60") & All VKC10 pumps both 56C NEMA & 80 Metric frame motor adapters. If you are unsure whether your pump was supplied with a flywheel please contact our Tech Service Department at PH: 800-888-3743 or email techservice@finishthompson.com.

Note: motor assembly videos are available on line at <http://www.Finishthompson.Com/downloads/maintenance-videos/>

FOR 56C FRAME VKC5.5,6,6H, 7 AND 8 PUMP ADAPTERS WITHOUT FLYWHEELS [12" - 48" (30-122 cm)]. USE FIGURE 7.

1. Unpack the pump and any supplied accessories and examine for damage. If damage is detected, save the packaging and notify the carrier immediately.
2. Prepare to assemble the pump onto the motor by placing the motor on the fan cover on a suitable clean, level work surface.
3. Slide the supplied coupling half (metal half of item 27 in figure 7) onto the motor shaft with the splined side facing the pump. Adjust the coupling half so that the motor shaft is recessed 7/32" below the top of the coupling. Insert the motor shaft key in the slot and tighten both setscrews with a 1/8" Allen wrench to 70 in-lbs.
4. Install the coupling insert (yellow internally splined plastic sleeve) onto the coupling half on the motor shaft. Carefully slide the motor adapter (item 9 in figure 7) onto the motor making sure the pump shaft.

coupling matches up with the plastic insert and seats properly. Make sure rabbet on the motor is firmly seated into the motor adapter.

⚠ CAUTION: Pump assembly may be top heavy.

5. Rotate the pump discharge and mounting plate (if ordered) to the desired orientation. Align the holes in the mounting plate and the motor adapter with the holes in the motor face. Secure the mounting plate and motor adapter to the motor using (4) washers, lock washers, and 3/8" bolts (items 6,7,8) from the hardware package.
6. Ensure that lock rings are securely snapped in place and did not loosen during shipment.
7. Install the pump into the system according to the installation instructions provided.

FOR 56C FRAME VKC8 [54"-60" (137-152 cm)] AND ALL VKC10 PUMP ADAPTERS WITH FLYWHEELS (ITEM 35 IN FIGURE 8):

1. Unpack the pump and any supplied accessories and examine for damage. If damage is detected, save the packaging and notify the carrier immediately.
 2. Prepare to assemble the pump onto the motor by placing the motor on the fan cover on a suitable clean, level work surface.
 3. Install motor key into motor shaft key slot. Align the keyway slot on the flywheel (item 35 in figure 8) and slide the flywheel onto the motor shaft with the protruding boss towards the motor face. Align the keyway slot in the coupling half and slide the coupling half on. Set coupling half with the motor shaft recessed 7/32" and tighten both setscrews with a 1/8" Allen wrench to 70 in-lbs.
 4. Slide the flywheel forward so that it rests against the backside of the coupling half. Tighten both setscrews.
 5. Insert the coupling insert (yellow internally splined plastic sleeve) into the coupling half on the motor shaft. Place coupling support (item 38A in figure 8) into center of coupling half with the short side facing the motor. Carefully slide the motor adapter end (item 9 in figure 8) of the pump assembly over the motor shaft until both coupling halves are completely seated in the coupling insert. Make sure rabbet on the motor is firmly seated into the motor adapter.
- ⚠ CAUTION:** Pump assembly may be top heavy
6. Rotate the pump discharge and mounting plate (if ordered) to the desired orientation. Align the holes in the mounting plate and the motor adapter with the holes in the motor face. Secure the mounting plate and motor adapter to the motor using (4) washers, lock washers and 3/8" bolts (items 6, 7, 8) from the hardware package.
 7. Ensure that lock rings are securely snapped in place and did not loosen during shipment.
 8. Install the pump into the system according to the installation instructions provided.

FOR 63, 71 AND 80 METRIC FRAME ADAPTERS WITHOUT FLYWHEELS (USE FIGURE 7)

1. Unpack the pump and any supplied accessories and examine for damage. If damage is detected, save the packaging and notify the carrier immediately.
2. Prepare to assemble the pump onto the motor by placing the motor on the fan cover on a suitable clean, level work surface.
3. Install the keyway into the motor shaft key slot. Align the keyway slot in the coupling half, and slide the coupling half onto the motor shaft with the splined side facing the pump. Set the coupling half with the motor shaft recessed 11.1 mm. Tighten both setscrews with a 1/8" Allen wrench to 7.9 N-m.
4. Install the metric motor adapter (item 2 in figure 7) onto the motor. To aid in correct installation, the letters "A" and "B" are molded onto opposite sides of the motor adapter. For 71 frame motors, using the



Figure A



Figure B

correct hardware (items 3, 4, and 5 in figure 7), mount the adapter with side B facing up. For 63 and 80 frame motors, using the correct hardware (items 3, 4, and 5 in figure 7), mount the adapter with side A facing up. See figures A and B.

5. Install the coupling insert (yellow internally splined plastic sleeve) onto the coupling half on the motor shaft. Carefully slide the motor adapter (item 9 in figure 7) onto the motor making sure the pump shaft coupling matches up with the plastic insert and seats properly. Make sure rabbet on the motor is firmly seated into the motor adapter.
6. Rotate the pump discharge and the mounting plate if ordered to the desired orientation. Align the bolt holes on the mounting plate with the motor adapter (item 9) and the metric motor adapter flange (item 2). Secure with the hardware provided.

CAUTION: Pump assembly may be top heavy.

7. Make sure that the locking rings are securely snapped in place and did not loosen during shipping or the assembly process.
8. Install the pump into the system according to the installation instructions provided.

FOR 80 FRAME METRIC MOTOR ADAPTER WITH FLYWHEEL (ITEM 35 IN FIGURE 8):

1. Unpack the pump parts and any supplied accessories and examine for damage. If damage is detected, save the packaging and notify the carrier immediately.
2. Prepare to assemble the pump onto the motor by placing the motor on the fan cover on a suitable clean, level work surface.
3. Install the keyway into motor shaft key slot. Align the keyway slot in flywheel adapter / coupling half combination (item 34 and metal half of item 27 in figure 8) and install on motor shaft with splined side facing the pump. Note: These items are preassembled at the factory. Set coupling half flush with the end of the motor shaft and secure with coupling support washer, lock washer and bolt (items 38B, 39 & 40). Tighten both setscrews in coupling half with 1/8" Allen wrench to 7.9 N-m.
4. Install the metric motor adapter (item 2 in figure 8) onto the motor. To aid in correct installation, the letters "A" and "B" are molded on the opposite sides of the metric motor adapter. For 80 frame motors using the correct hardware (items 3,4 and 5 in figure 8) mount the adapter

with side "A" facing up. The metric motor adapter must be positioned so that the adapter seats onto the motor rabbet. See figures A and B above.

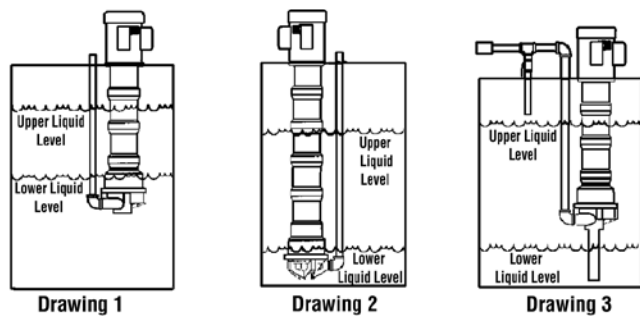
CAUTION: Improper positioning of the metric motor adapter can cause premature coupling failure or cause the pump shaft to bottom out before the pump is properly installed onto the motor adapter.

5. Install the flywheel (item 35 in figure 8) onto the flywheel adapter and attach using four screws with lock washers (items 36 and 37 in figure 8). Tighten securely.
6. Insert the coupling insert (yellow internally splined plastic sleeve) into the coupling half on the motor. Carefully slide the motor adapter end (item 9 in figure 8) of the pump assembly over the motor shaft until both coupling halves are completely seated in the coupling insert. Make sure rabbet on the motor is firmly seated into the motor adapter.
7. Rotate the pump discharge and mounting plate if ordered to the desired orientation. Align the boltholes on the mounting plate with the motor adapter (item 9) and the metric motor adapter flange (item 2). Secure with the hardware provided.
8. Make sure that the locking rings are securely snapped in place and did not loosen during shipping or the assembly process.

CAUTION: Pump assembly may be top heavy.

Install the pump into the system according to the installation instructions provided.

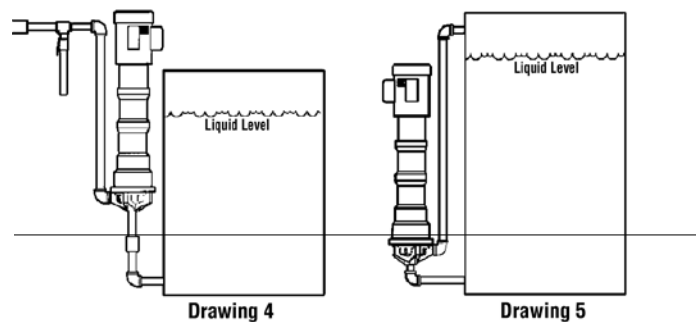
Figure 1



Drawing 1

Drawing 2

Drawing 3



Drawing 4

Drawing 5

Drawing 1 shows drawing of pump mounted inside tank with suction off the bottom of the tank and level fluctuating from near top of pump column to close to the bottom of the pump.

Drawing 2 shows drawing of pump suction near tank bottom and level fluctuating between the top and bottom of the tank.

Drawing 3 shows drawing of pump with suction extension and the level fluctuating between startup level and low level.

Drawing 4 shows drawing of pump mounted outside the tank.

Drawing 5 shows drawing of pump mounted outside the tank with the motor below the liquid level.

Mount pump in desired configuration. Securely fasten mounting plate if used. Motor feet may also be used for mounting.

PIPING

1. Support piping near the pump to eliminate any strain on the pump casings. Do not use suction or discharge piping to support the pump.
2. Do not overtighten the piping on the discharge on initial installation (i.e., down to the collar on NPT housings or the o-ring on BSP housings). Damage to the discharge can occur. The o-ring on the BSP housing is only used when the plastic threads are loose.
3. Do not place the pump suction directly on the bottom of the tank. Keep the pump suction at least one pipe diameter off the bottom.
4. A suction extension tube of up to nine feet in length can be added.
5. To minimize head loss from friction:
 - a. Increase pipe size by 1 diameter.
 - b. Use minimal number of pipe bends.
6. If a check valve is installed in the discharge piping, an air bleed must be installed in the discharge line to prevent air lock. This allows air trapped in the pump internals to be removed on initial start-up. See drawings 3 and 4 in Figure 1.
7. Maintain a flooded suction. Use a foot valve if necessary.
8. Ensure that the piping does not leak and suction is not prone to clogging. Use a strainer if necessary on the suction.
9. If flexible hose is preferred, use reinforced hose rated for the proper temperature and pressure. This helps avoid collapse or kinks.
10. Install valves a minimum of 10 pipe diameters from the pump.

⚠ CAUTION: To stop the pump if prime is lost, use one of the following: (1) pressure switch on the discharge or (2) motor minder to monitor motor current.

INSTALLATION

The VKC Series is a versatile pump designed to be operated in a variety of mounting configurations. The pump can be mounted either inside or outside of a tank or sump. See Figure 1.

Note: Drawings for illustration only. Pumps need to be properly supported when installed.

MOTOR/ELECTRICAL

1. Only qualified personnel trained in the safe installation and operation of this equipment should install the motor. Install the motor according to National Electric Code, NEMA MG-2, IEC standards requirements and/or applicable local electrical codes. The voltage and frequency variations of the power supply should never exceed the limits established in the applicable standard. Prior to connecting to the power line, check nameplate voltage, rotation connection and ensure proper grounding. Sufficient ventilation area should be provided to insure proper operation and cooling of the motor. The motor must be installed with a suitable overload protection circuit. For three phase motors it is recommended to install a phase failure protection device. Download the motor manual from the specific motor manufacturers' website for additional information concerning motor installation, safety and maintenance instructions.

Wire the motor for clockwise rotation when facing the fan end of the motor.

⚠ CAUTION: Do not operate the pump to check rotation until the pump is full of liquid or damage may occur even if the motor is "bumped" to check motor rotation direction.

Check all electrical connections with the wiring diagram on the motor. Make sure the voltage, frequency, phase and amp draw comply with the

supply circuit.

If utilized, verify that power monitors or variable frequency drives have been properly installed according to the manufacturer's instructions.

2. Wire the motor for clockwise rotation when facing the fan end of the motor.
3. To verify the correct motor rotation:
 - a. Install the pump into the system
 - b. Fully open the suction and discharge valves
 - c. Allow fluid to run into the pump. Do not allow the pump to run dry (PTFE and ceramic bushings can't be run dry without causing damage to internal parts).
 - d. Jog the motor (allow it to run for only one to two seconds) and observe the rotation of the motor fan. Refer to the directional arrow by the electrical box if needed.

Note: A pump running backwards will pump but at a greatly reduced flow and pressure.

OPERATION

1. Completely open discharge valve. On pumps equipped with a discharge check valve, open air bleed valve on initial start-up.
2. Start the pump and check liquid flow. If there is no flow, see the Troubleshooting section.
3. Adjust the flow rate and pressure by regulating the discharge valve.

MAINTENANCE

WET END INSPECTION / REPLACEMENT

1. Disconnect the power. Unwire the motor (mark the wires for correct rotation upon reassembly). Close the suction and discharge valves, and remove the pump from the installation. Remove any discharge piping that will hinder the removal of the housing.
2. Place the pump on a clean work bench and secure the motor or mounting plate. Gently tap the locking ring (item 11) towards the motor until it is loose (the locking ring connects the column housing adapter (item 15) to the next section). Using a strap wrench, unthread the column housing section turning it counterclockwise. Grasping the discharge and pump head, pull it straight off of the pump and place it on the bench with the suction pointing straight up.
3. Make an alignment mark on the side of the impeller housing (item 21) and the column housing adapter (item 15) to aid in alignment during the reassembly process. Remove the six impeller housing mounting screws (items 22). Remove the impeller housing (item 21) and o-ring (item 16). Grasp the impeller and remove it from the column housing adapter (item 15).

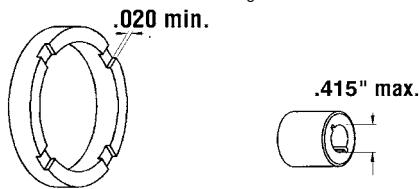
⚠ CAUTION: Keep the drive magnet assembly (item 14) and impeller drive (item 18) away from metal chips or particles.

Note: Keep the impeller housing o-ring (item 16) with the impeller housing to avoid mix up during reassembly.

EXAMINATION

1. Check the impeller drive bushing (item 17), thrust ring (item 20), ceramic thrust ring and shaft for cracks, chips, scoring or excess wear. See figure 2. Replace as required.
2. Check for loose magnets on the drive assembly or rubbed areas on the impeller or column housing adapter assemblies. Contact your distributor or FTI Technical Service if a problem is found.

Figure 2



BUSHING REPLACEMENT

1. To remove the bushing, insert 1/16" pin punch into balance hole (inner circle of 4 holes) of impeller assembly (items 17,18,19,20). Gently tap the bushing out of the back of the impeller assembly. The punch may need to be moved to a different hole if the bushing is difficult to remove.
2. To replace the bushing, clean the impeller bore. Insert the new bushing into the back of the impeller assembly by aligning the bushing with the impeller bore. Press gently until the bushing bottoms out (use a block of wood and mallet if necessary).

MOTOR REPLACEMENT

Remove the four bolts and washers (items 6, 7, and 8) securing the motor adapter (item 9) to the motor. Carefully pull the pump away from the motor face. Loosen the two setscrews on the coupling half (located on the motor shaft). Remove the coupling half. Install motor shaft coupling half onto a new motor following the assembly instructions on page one for 56C or metric frame pumps. Make sure the coupling insert meshes. Install pump onto the new motor.

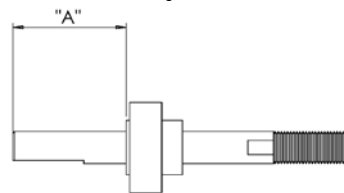
DRIVE MAGNET ASSEMBLY, SHAFT BEARING OR COLUMN SECTION REPLACEMENT

1. The drive magnet assembly (item 14) is locked in place with a left hand threaded 5/8-18 jam nut (item 32). Loctite Thread Locker #262 is used to secure the jam nut and may require some heat to loosen the bond for removal. Secure the pump shaft using the flats located on the motor side of the drive magnet assembly, and remove the jam nut. Unthread the drive magnet assembly (left hand thread) from the shaft.
2. Loosen the two setscrews on the shaft bearing (item 28). Gently tap the next locking ring (item 11) toward the motor until it is loose. Using a strap wrench, unthread and remove the column extension (item 30). Repeat step two for each section removed.
3. When you are down to the motor adapter section (item 9), remove the four bolts holding the adapter (and mounting plate if you have one) to the motor. Mark the flange on the motor adapter / mounting plate and the motor face for correct orientation when reassembling. Remove the mounting plate, and pull the motor adapter from the motor face.
4. 12" models will have two bearings in the motor adapter section. If further disassembly is necessary, loosen the two setscrews on the pump side bearing, and gently press the shaft and the second bearing toward the motor end until it loosens. If the bearing or the shaft need replacement, loosen the setscrews and remove the pump shaft coupling half. Loosen the setscrews on the bearing and slide it off the shaft. On models 18" or longer, just loosen the setscrews on the pump shaft coupling half and remove it.
5. Spin all of the bearings and visually inspect for binding or corrosion. To replace, remove the four screws and washers (items 29 and 33). Gently tap the bearings toward the pump end of each section until they are loose.
6. Inspect the drive magnet assembly, each column section, all of the bearings, shaft, and o-rings for wear or damage. Replace as needed.

REASSEMBLY

1. If the shaft, or the first bearing on a 12" model was replaced, you will need to slide the new bearing onto the shaft with the setscrew side facing away from the motor. Adjust the bearing to the correct setting in Figure 3, and tighten both setscrews.

Figure 3



Pump	Motor Frame	Dim. A"
VKC6/8/10	56C	0.95"
VKC6/8/10	80	2.41"
VKC6/8/10	71	2.19"
VKC6/8/10	63	2.40"

2. Install the key into the keyway cut in the motor end of the pump shaft (item 13). Align the coupling half keyway slot and install the coupling half with the splines pointing toward the motor end. For 56C frame, set the coupling with the shaft end recessed .218". Tighten the setscrews. For 63 and 71 frames, set the coupling with the shaft end recessed .437" and tighten the setscrews. For 80 frame, set the coupling with the shaft recessed .250 and tighten the setscrews.
3. For 12" models - from the motor side, insert the threaded end of the shaft up through the center of the motor adapter (item 9). Press the bearing into the machined recess making sure to use the outer bearing race as the point of contact.
For models 18" or longer, insert the threaded end of the pump shaft up through the bearing already in place in the pump end of the motor adapter. Leave the bearing setscrews loose.
4. For metric frame pumps, install the metric motor adapter flange (item 2) per instructions in step 4 of "Pumps Without Motors (Metric Frame) from page 1.
5. Install the coupling insert onto the pump shaft coupling half. Place motor on its fan cover on a flat clean area. Make sure the coupling splines mesh with the insert. Install the motor adapter and pump shaft onto the motor face. Verify the motor adapter seats completely onto the motor rabbet (or metric motor adapter flange on metric pumps). Install the mounting plate (if one is used) and align the marks on the motor, the motor adapter flange and the mounting plate for correct orientation. Install the four bolts and tighten to the motor face.
6. For 12" models, go to step 8. For models 18" or longer, rotate the pump shaft and press down to insure complete coupling engagement. While holding the shaft snugly down, tighten the bearing setscrews.
7. If column o-rings (item 12) were removed or need replacement, lubricate the o-rings with a compatible lubricant and install them in the o-ring grooves. If the bearing (item 28) was removed, press the new bearing (only making contact with the outer bearing race) into the recess with the extended race (setscrews) facing away from the motor. Install the four retaining screws and washers (items 29 and 33).
8. Lubricate the motor adapter o-rings (item 12) with a compatible lubricant. Place the locking ring (item 11) (with the smaller inside diameter side toward the motor) over the end of the column section and slide it toward the motor. Install the column extension (item 30) by aligning the threaded end of the shaft through the bearing and sliding it down to the top of the motor adapter. Secure the motor and mounting plate to the table. Using a strap wrench, thread the column extension onto the motor adapter. Tighten the section until there is no gap between the sections and the flats are parallel. Tighten the two bearing setscrews

into the pump shaft. Pull the locking ring (item 11) toward the pump end until it snaps into place locking the two sections together.

- Repeat step eight until all column extensions are installed. If the pump is a 24" model or longer, you may need a second strap wrench to hold the previous section in place while tightening the new one.

Note: It may be possible to slightly overtighten these sections. Simply back off slowly until the flats are aligned and the lock ring snaps into place.

- Install the left hand threaded drive magnet assembly (item 14) onto the drive shaft (item 13) until it is set at 4.00 +/- .015 as measured from the top of the motor adapter/column extension to the top of the drive magnet assembly. See Figure 4. Apply a small amount of Loctite Thread Locker #262 to the inside threads on the 5/8-18 left hand jam nut (item 32) and the outside threads on the drive shaft. Thread the jam nut on until it makes contact with the drive. Hold the drive magnet assembly still and tighten it to 50 ft. pounds. Recheck the drive magnet setting after the jam nut is tight to ensure it did not move.

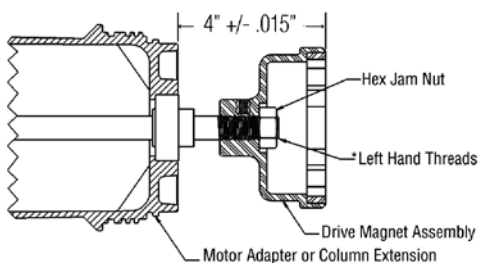


Figure 4

- Reassemble the wet end by placing the impeller (items 18 and 19) onto the ceramic shaft in the column housing adapter (item 15). Install the housing o-ring (item 16), and lubricate with a compatible lubricant. Align the marks made on the housing (item 21) and the column housing adapter (item 15) during disassembly. Install the impeller housing (item 21) onto the column housing adapter taking care not to dislodge the o-ring. Align the bolt holes and install the six mounting screws (item 22). Use a PTFE thread lubricant on the PVDF screws. Following the pattern in Figure 5, carefully tighten using a screwdriver. Do not over-tighten the screws (recommended maximum torque is 25 in-lbs.) Reach into the suction and spin the impeller with your finger to verify it is not rubbing or binding.

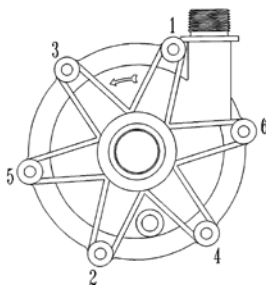


Figure 5

- Slide the locking ring over the end of the column extension with the smaller inside diameter side toward the motor. Lubricate the column rings (item 12) with a compatible lubricant and install the "wet end" by threading it on until the flats line up. Pull the locking ring toward the pump end and snap it in place locking the two sections together.
- Rotate the motor fan by hand to verify nothing is rubbing or binding. Reinstall the pump into the system according to the installation instructions.

GENERAL NOTES

- Do not pump liquids containing metal fines.
- If magnets decouple, stop the pump immediately. The rare earth magnets used in this pump are more resistant to demagnetization, but operating the pump with the magnets decoupled will eventually weaken the magnets.
- Plastic pumps will expand and contract with temperature so periodically check and hand tighten screws.
- Use a chemically compatible thread lubricant on threads of column sections.
- The setting of the drive magnet dimension is critical. Failure to properly set the dimension may result in decoupling or damage to pump components.
- An information sticker is attached to the motor adapter section. The first line is the model number, the second is the serial number. See Figure 6.

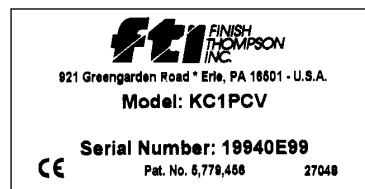


Figure 6

- The pump will contain various numbers of shaft bearings (item 28) based on the length of the pump as follows:

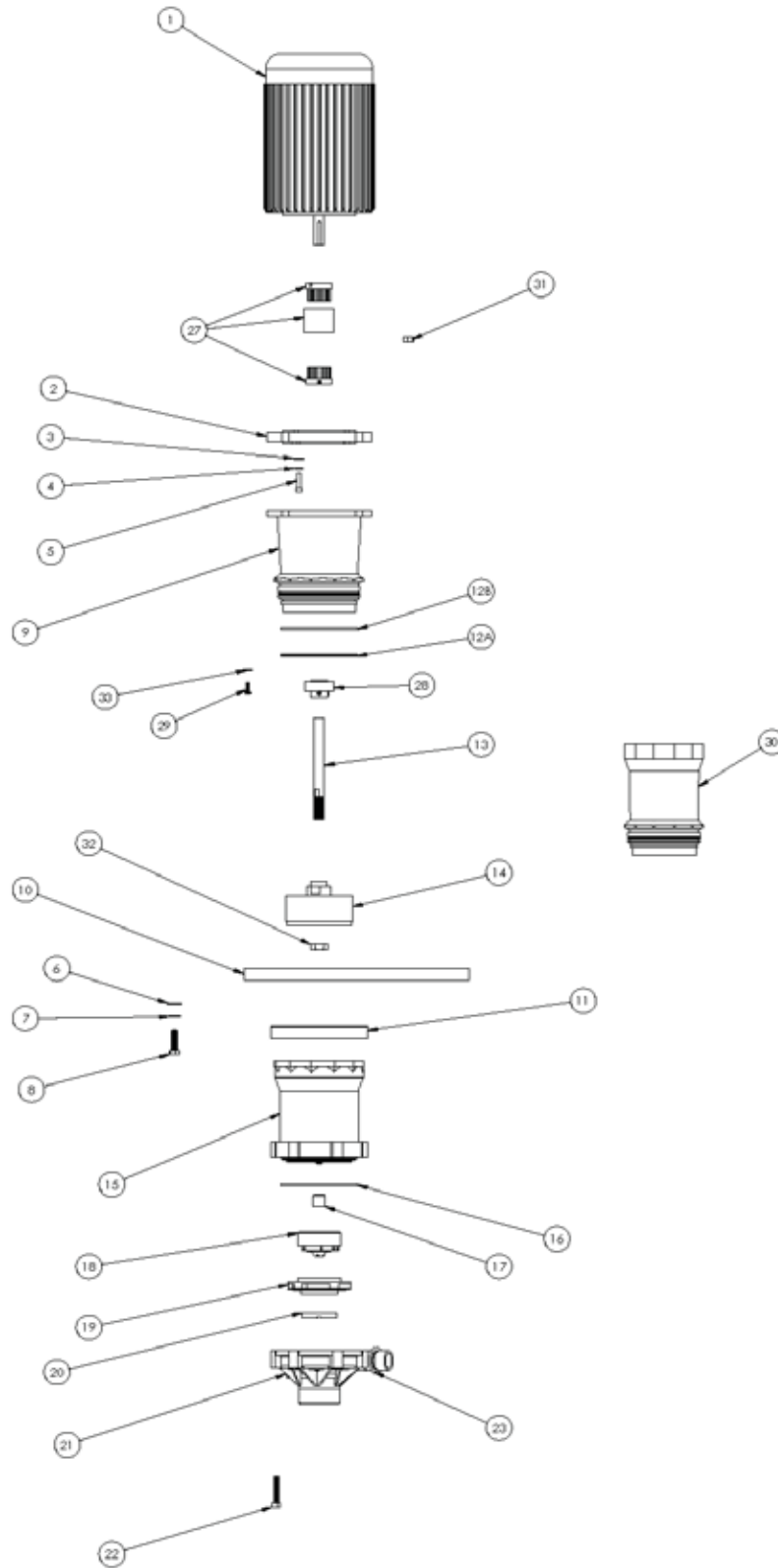
12" pump	=	(2) shaft bearing
18" pump	=	(2) shaft bearings
24" pump	=	(3) shaft bearings
30" pump	=	(4) shaft bearings
36" pump	=	(5) shaft bearings
42" pump	=	(6) shaft bearings
48" pump	=	(7) shaft bearings
54" pump	=	(8) shaft bearings
60" pump	=	(9) shaft bearings
- Due to the hermetically sealed design, the pump will displace liquid as follows:

12" pump	=	approximately 1 gallon (3.78 liters)
Add approximately 1 quart (.95 liter) per column section.		
E.G. 24" pump	=	1-1/2 gallons (4.73 liters)
- 12" pumps do not have column extensions.

VKC SERIES WITHOUT FLYWHEEL

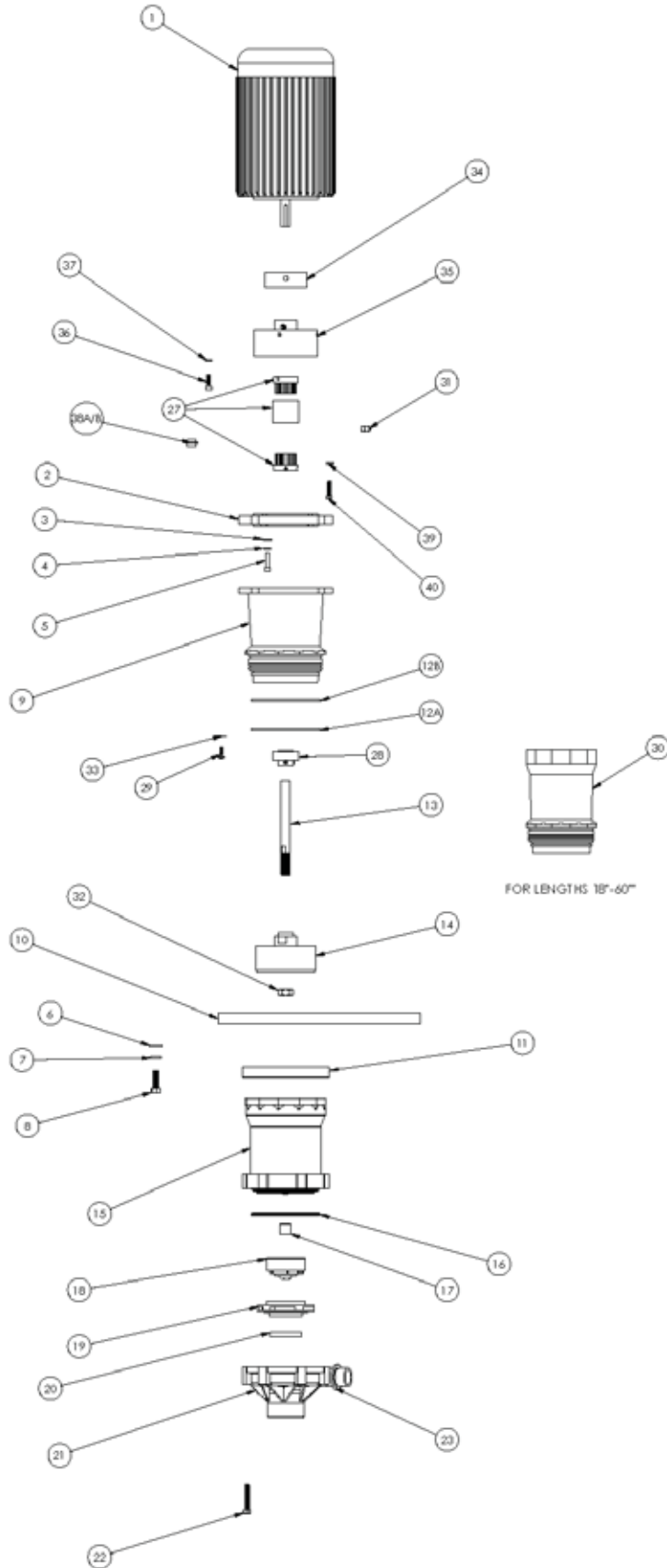
VKC5.5, 6, 6H, 7 and 8
[12-48" (30 cm - 122 cm)]
56C, 63, 71, and 80 Frames

Figure 7



VKC SERIES WITH FLYWHEEL
VKC8 [54" - 60" (137 cm - 152 cm)]
All VKC10 56C and 80 Frames

Figure 8



VKC 5.5, 6, 6H, 7, 8, 10 SERIES SPARE PARTS

Item	Qty	Description	Part Number
1	1	Motor	
		See Motor Section on page 21-22	
2	1	Metric Motor Adapter	
		IEC 63/71 frame	M101947
		IEC 80 frame	M101947-2
3	4	Flat Washer	
		1/4" stainless steel	J100113
4	4	Lock Washer	
		1/4" stainless steel	J100672
5	4	Socket Head Cap Screw	
		IEC 63 frame	J103226
		IEC 71/80 frame	J103228
6	4	Flat Washer	
		3/8" stainless steel	J100128
7	4	Lock Washer	
		3/8" stainless steel	J100115
8	4	Motor Mounting Cap Screw	
		3/8-16 x 1-3/4" hex head - all 56C models w/ mounting plate	J103161
		3/8-16 x 1" hex head - all 56C models w/out mounting plate	J100114
		3/8-16 x 2-1/4" hex head - all 63/71/80 models w/ mounting plate	J103227
		3/8-16 x 1-1/2" hex head - all 63/71/80 models w/out mounting plate	J103207
9	1	Motor Adapter	
		Polypropylene - 18" to 60" length models	M101981-1
		Polypropylene - 12" length models	A103377-1
		PVDF - 18" to 60" length models	M101981-2
		PVDF - 12" length models	A103377-2
10	1	PVC Mounting Plate 9-1/2" x 14-3/4" (Optional)	
		VKC 5.5, 6, 6H	105612
		VKC 7, 8, 10	105611
11		Lock Ring	
		Polypropylene	M101984-1
		PVDF	M101984-2
12A		Motor Adapter/Column O-Ring	
		FKM - 4 mm	J103306
		EPDM - 4 mm	J103308
12B		Motor Adapter/Column O-Ring	
		FKM - 4.5 mm	J103307
		EPDM - 4.5 mm	J103309
13	1	Drive Shaft	
		12" 56C frame	M102119-9
		12" 63/80 frame	M102119-19
		12" 71 frame	M102119-10
		18" 56C frame	M102119-1
		18" 63/80 frame	M102119-20
		18" 71 frame	M102119-5
		24" 56C frame	M102119-2
		24" 63/80 frame	M102119-21
		24" 71 frame	M102119-6
		30" 56C frame	M102119-3
		30" 63/80 frame	M102119-22
		30" 71 frame	M102119-7
		36" 56C frame	M102119-4
		36" 63/80 frame	M102119-23
		36" 71 frame	M102119-8
		42" 56C frame	M102119-11
		42" 63/80 frame	M102119-24
		42" 71 frame	M102119-15
		48" 56C frame	M102119-12
		48" 63/80 frame	M102119-25
		48" 71 frame	M102119-16
		54" 56C frame	M102119-13
54" 63/80 frame	M102119-26		
54" 71 frame	M102119-17		
60" 56C frame	M102119-14		
60" 63/80 frame	M102119-27		
60" 71 frame	M102119-18		

Item	Qty	Description	Part Number
14	1	Drive Magnet Assembly	
		6 pole	A101989-17
		8 pole	A101989-18
		10 pole	A101989-19
		12 pole	A101989-20
15	1	Column Housing Adapter	
		Polypropylene	A102271-1
		PVDF	A102271-2
16	1	Impeller Housing O-ring	
		FKM	J102389
		EPDM	J102585
17	1	Impeller Bushing	
		Carbon	J102387
		PTFE	J102790
		Ceramic	J103617
18	1	Impeller Drive Assembly	
		6 pole - polypropylene with carbon bushing	A102746-1
		6 pole - polypropylene with PTFE bushing	A102746-10
		6 pole - polypropylene with ceramic bushing	A102746-20
		6 pole - PVDF with carbon bushing	A102746-2
		6 pole - PVDF with PTFE bushing	A102746-13
		6 pole - PVDF with ceramic bushing	A102746-21
		8 pole - polypropylene carbon bushing	A102746-4
		8 pole - polypropylene with PTFE bushing	A102746-11
		8 pole - polypropylene with ceramic bushing	A102746-22
		8 pole - PVDF with carbon bushing	A102746-5
		8 pole - PVDF with PTFE bushing	A102746-14
		8 pole - PVDF with ceramic bushing	A102746-23
		10 pole - polypropylene with carbon bushing	A102746-7
		10 pole - polypropylene with PTFE bushing	A102746-12
		10 pole - polypropylene with ceramic bushing	A102746-24
		10 pole - PVDF with carbon bushing	A102746-8
		10 pole - PVDF with PTFE bushing	A102746-15
		10 pole - PVDF with ceramic bushing	A102746-25
		12 pole - polypropylene with carbon bushing	A102746-16
12 pole - polypropylene with PTFE bushing	A102746-17		
12 pole - polypropylene with ceramic bushing	A102746-26		
12 pole - PVDF with carbon bushing	A102746-18		
12 pole - PVDF with PTFE bushing	A102746-19		
12 pole - PVDF with ceramic bushing	A102746-27		
19	1	Impeller with Thrust Ring	
		3.00" polypropylene VKC5.5	A101983-10
		3.19" polypropylene VKC6	A101983-1
		3.88" polypropylene VKC6H	A101983-13
		3.19" polypropylene VKC7	A101983-15
		3.50" polypropylene VKC8	A101983-2
		3.88" polypropylene VKC10	A101983-3
		3.00" PVDF VKC5.5	A101983-11
		3.19" PVDF VKC6	A101983-4
		3.88" PVDF VKC6H	A101983-14
		3.19" PVDF VKC7	A101983-16
		3.50" PVDF VKC8	A101983-5
3.88" PVDF VKC10	A101983-6		
20	1	PTFE Thrust Ring	
		VKC5.5,6	J102388
		VKC6H	J104045
		VKC7	J103893
		VKC 8,10	J101606

Item	Qty	Description	Part Number
21	1	Impeller Housing with Thrust Ring	
		VKC5.5, 6, 6H - polypropylene NPT	A101981-1
		VKC5.5, 6, 6H - polypropylene BSP with FKM discharge o-ring	A101982-3
		VKC5.5, 6, 6H - polypropylene BSP with EPDM discharge o-ring	A101982-7
		VKC5.5, 6, 6H - PVDF NPT	A101981-3
		VKC5.5, 6, 6H - PVDF BSP with FKM discharge o-ring	A101982-4
		VKC5.5, 6, 6H - PVDF BSP with EPDM discharge o-ring	A101982-8
		VKC7, 8, 10 - polypropylene NPT	A101981-7
		VKC7, 8, 10 - polypropylene BSP with FKM discharge o-ring	A101982-11
		VKC7, 8, 10 - polypropylene BSP with EPDM discharge o-ring	A101982-15
		VKC7, 8, 10 - PVDF NPT	A101981-9
		VKC7, 8, 10 - PVDF BSP with FKM discharge o-ring	A101982-12
		VKC7, 8, 10 - PVDF BSP with EPDM discharge o-ring	A101982-16
22	6	Impeller Housing Mounting Screw	
		PVDF	J103149
		Titanium	J103524
		Hastelloy C	J103535
23	1	Discharge O-ring	
		FKM (VKC5.5, 6, 6H)	J102390
		EPDM (VKC5.5, 6, 6H)	J102712
		FKM (VKC7, 8, 10)	J102391
		EPDM (VKC7, 8, 10)	J102713
24	1	Hex Reducer Bushing (Not Shown)	
		VKC 5.5, 6, 6H - 1" x 3/4" polypropylene	J103158
		VKC 5.5, 6, 6H - 1" x 3/4" PVDF	J103153
		VKC7, 8, 10 - 1-1/2" x 1" polypropylene	J103160
		VKC7, 8, 10 - 1-1/2" x 1" PVDF	J103159
25	1	Elbow (Not Shown)	
		VKC5.5,6,6H polypropylene - 90° x 1"	J103167
		VKC5.5,6,6H PVDF - 90° x 1"	J103168
		VKC7,8,10 polypropylene - 90° x 1-1/2"	J103165
		VKC7,8,10 PVDF - 90° x 1-1/2"	J103166
26	1	Optional Discharge Piping (Not Shown)	
		Available in polypropylene & PVDF, 18" to 60"	See pages 7-11
27	1	Coupling	
		Coupling - 56C frame	A102485
		Coupling - 63 frame	A102486
		Coupling - 71 frame	A102487
		Coupling - 80 frame	A102488
		Coupling - 80 frame w/ flywheel	105464
28		Shaft Bearing	
			J103157
29		Bearing Retaining Screw	
		Phillips head M5 x 16mm	J103175
30		Column Extension	
		Polypropylene	M101982-1
		PVDF	M101982-2
31	4	Hex Nut	
		3/8" -16 for metric adapter plate	J100135
32	1	Jam Nut	
		Left hand threads	J103515
33	4	Flat Washer	
		#10 stainless steel	J103638
34	1	Flywheel Adapter	
		80 frame only - VKC8 (54" & 60" lengths only) & VKC10 all lengths	105442
35	1	Flywheel	
		56C Frame - VKC8 (54" & 60" lengths only) & VKC10 all lengths	105462
		IEC 63 B14 frame	N/A
		IEC 71 B14 frame	N/A
		IEC 80 B14 frame VKC8 (54" & 60" lengths only) & VKC10 all lengths	105443

Item	Qty	Description	Part Number
36	4	Socket Head Bolt (80 Frame Only)	
		10-32 x 1-1/4" - VKC8 (54" & 60" lengths only) & VKC10 all lengths	J100023
37	4	Lock Washer	
		#10 (80 frame ONLY)	J103637
38A	1	Coupling Support	
		56C Frame	105463
		IEC 63 B14 frame	N/A
		IEC 71 B14 frame	N/A
38B	1	Coupling Support (80 Frame Only)	
		IEC 80 B14 frame	105444
39	4	Lock Washer (80 Frame Only)	
		1/4" - VKC8 (54" & 60" lengths only) & VKC10 all lengths	J100672
40	4	Bolt (80 Frame Only)	
		M6 Hex Head - VKC8 (54" & 60" lengths only) & VKC10 all lengths	J102759

*Note: If a VKC 5.5/6/8/10 drive magnet assembly replacement part is needed and the pump does not have a threaded shaft (serial numbers below #25318), then the following parts must be ordered to convert to the threaded drive magnet design: drive magnet assembly, pump shaft, and hex jam nut.



FINISH THOMPSON INC.
 921 Greengarden Road - Erie, PA 16591-1591 U.S.A.
 Ph: 814-453-4419 - Fax: 814-453-8218
 Email: info@finishthompson.com - www.finishthompson.com

EU Declaration of Conformity

CE

Finish Thompson Inc. hereby declares that the following machine(s) fully comply with the applicable health and safety requirements as specified by the EU Directives listed. The product may not be taken into service until it has been established that the drive motor for the centrifugal pump complies with the provisions of all relevant EU Directives. The complete product complies with the provisions of the EC Directive on machinery safety provided motors carry CE marking.

This declaration is valid provided that the devices are fully assembled and no modifications are made to these devices.

Type of Device:
Centrifugal Pumps

Models:

AC/AK/AV - 400/500/600/800	GP-11/22/32	VKC-5.5/6/6H/7/8/10
DB-3/4/5/5.5/6/6H/7/8/9/10/11/15/22	MSKC	SP-10/11/15/22
KC-3/4/5/5.5/6/6H/8/10/11/22/32	MSVKC	
UC-1516/1516L/1518/1518L/2110/3158/326/326H/328/436/438/4310H/326H/4310H/6410		

EU Directives:
Machinery Safety (2006/42/EC)

Applied Harmonized Standards:
EN ISO 12100
EN 809

Manufacturer: Finish
Thompson Inc.
921 Greengarden Road
Erie, Pennsylvania 16501-1591 U.S.A

Signed,


 President

1 August 2016

Person(s) Authorized to Compile Technical File: Finish Thompson GmbH
 Otto-Hahn-Strasse 16
 Maintal, D-63477 DEU
 Telephone: 49 (0)6181-90878-0

TROUBLESHOOTING

NO DISCHARGE

- Pump not primed.
- Air lock in pump.
- Discharge head too high.
- Closed valve.
- Viscosity or specific gravity too high (magnets uncoupled).

INSUFFICIENT DISCHARGE

- Discharge head higher than anticipated.
- Clogged suction line, foot valve or crimp in hose.
- Foot valve too small.
- Foot valve or suction opening not submerged enough.
- Incorrect pump rotation

INSUFFICIENT PRESSURE

- Air or gasses in liquid.
- Impeller diameter too small.
- Discharge head higher than anticipated.
- Incorrect pump rotation.

LOSS OF PRIME

- Leaking discharge line.
- Suction lift too high or insufficient NPSHA. Should be 2 feet above NPSHR.
- Foreign matter in impeller.
- Leaking valve.
- Malfunctioning level sensor or control.

EXCESSIVE POWER CONSUMPTION

- System head lower than rating. Pumps too much liquid.
- Specific gravity or viscosity of liquid being pumped is too high or higher than defined in application.
- Binding pump parts.

VIBRATION/NOISE

- Excess bearing wear.
- Drive magnet uncoupled.
- Loose magnet.
- Pump cavitating.
- Motor or piping not properly secured.
- Foreign object in impeller.
- Set screws on motor shaft coupling loose.
- Drive magnet assembly may not be properly set or secured.

WARRANTY

Finish Thompson Inc. (manufacturer) warrants this pump product to be free of defects in materials and workmanship for a period of one year from date of purchase by original purchaser. If a warranted defect, which is determined by manufacturer's inspection, occurs within this period, it will be repaired or replaced at the manufacturer's option, provided (1) the product is submitted with proof of purchase date and (2) transportation charges are prepaid to the manufacturer. Liability under this warranty is expressly limited to repairing or replacing the

product or parts thereof and is in lieu of any other warranties, either expressed or implied. This warranty does not apply to normal wear of the product or components. This warranty does not apply to products or parts broken due to, in whole or in part, accident, overload, abuse, chemical attack, tampering, or alteration. The warranty does not apply to any other equipment used or purchased in combination with this product. The manufacturer accepts no responsibility for product damage or personal injuries sustained when the product is modified in any way. If this warranty does not apply, the purchaser shall bear all cost for labor, material and transportation.

Manufacturer shall not be liable for incidental or consequential damages including, but not limited to process down time, transportation costs, costs associated with replacement or substitution products, labor costs, product installation or removal costs, or loss of profit. In any and all events, manufacturer's liability shall not exceed the purchase price of the product and/or accessories.

WARRANTY REGISTRATION

Thank you for your purchase of this quality Finish Thompson product. Be sure to take a minute to register your pump at Finishthompson.com/warranty. Simply provide the model number, serial number and a few other pieces of information.

CHEMICAL REACTION DISCLAIMER

The user must exercise primary responsibility in selecting the product's materials of construction, which are compatible with the fluid(s) that come(s) in contact with the product. The user may consult Finish Thompson, Inc. (manufacturer) and a manufacturer's representative/distributor agent to seek a recommendation of the product's material of construction that offers the optimum available chemical compatibility.

However neither manufacturer nor agent shall be liable for product damage or failure, injuries, or any other damage or loss arising out of a reaction, interaction or any chemical effect that occurs between the materials of the product's construction and fluids that come into contact with the product's internals.

Call our toll free Technical Service Hot Line, 1-800-888-3743, if you have questions regarding product operation or repair.

ORDERING SPARE PARTS

Spare parts can be ordered from your local distributor. Always refer to pump model number to avoid error.

OTHER FINISH THOMPSON PRODUCTS

Drum Transfer Pumps, available in sanitary construction, stainless steel, polypropylene, PVDF, and CPVC, are capable of flows to 40 gpm, discharge heads to 300 feet and viscosities to 100,000 cP.

Portable Mixers for turbine mixing and blending handle viscosities to 1,000 cP with gentle, non-vortexing circulation. Available in 316 stainless steel.

Centrifugal Pumps, in polypropylene, PVDF, 316 stainless steel, and cast ductile iron are offered in mag drive sealless or mechanical seal models. Pumps are capable of 330 gpm, up to 325 feet discharge head, and 220°F (104°C) maximum.



FINISH THOMPSON INC.

921 Greengarden Road • Erie, PA 16501-1591 U.S.A.
Ph 814-455-4478 • Fax 814-455-8518
Email fti@finishthompson.com • www.finishthompson.com

Service 800-888-3743
P/N J103242 Rev. 19, 2/27/2019

