

# PLASTOMATIC

## LINE CARD

### CHECK VALVES



**Series CKM**  
Patented design closes automatically, requires no reverse pressure 1/2", 3/4", 1" PVC, CPVC, GPP, PVDF, PTFE



**Series CKS**  
Isolated spring closes valve automatically, requires no reverse pressure 1 1/2", 2", 3", 4" PVC, CPVC, PP, PVDF



**Series CKD**  
Specialty diaphragm design opens with virtually no forward pressure 1/4", 1/2" PVC, PP, PVDF, PTFE

### VACUUM BREAKERS



**Series VBM**  
Patented design closes automatically, requires no reverse pressure 1/2", 3/4", 1" PVC, CPVC, GPP, PVDF, PTFE



**Series VBS**  
Isolated spring closes valve automatically, requires no reverse pressure 1-1/2", 2", 3", 4" PVC, CPVC, PP, PVDF

### RELIEF, BY-PASS & BACKPRESSURE VALVES



**Series RVDT/RVDTM**  
PTFE diaphragm design has no wetted elastomers; 1st State-approved thermoplastic anti-siphon valve; superior performance and cycle life. Inline flow pattern 1/4", 1/2", 3/4", 1", 1 1/2", 2", 3" PVC, CPVC, PP, PVDF, PTFE, SS



**Series TRVDT**  
3-port valve, PTFE diaphragm design has no wetted elastomers; simplifies piping 1/2", 3/4", 1" PVC, CPVC, PP, PVDF, PTFE,



**Series RVT/RVTX**  
Angle flow pattern with PTFE shaft. High flow rates in a design proven for over 50 years 1/2", 3/4", 1", 1 1/4", 1 1/2", 2", 3" PVC, CPVC, PP, PVDF, PTFE



**Series RVD**  
Angle flow pattern with PTFE spring guides. Compact, rugged design 1/4", 1/2" PVC, CPVC, PP, PVDF, PTFE



**Series RVDM**  
Inline pattern with ultra smooth flow performance, light weight 1/2", 3/4", 1" PVC, CPVC, GPP, PVDF

### HIGH PERFORMANCE PRESSURE REGULATORS



**Series PRH/PRHM**  
Rolling diaphragm, extended shaft and multiple spring design is the industry standard for thermoplastic pressure regulators. Set pressure range from 5 to 125 PSI on most models. 1/4", 1/2", 3/4", 1", 1 1/2", 2", 3", 4" PVC, CPVC, PP, PVDF, PTFE



**Series PRA**  
Air-piloted design provides superior flow with industry's lowest drop-off from set pressure (droop). Set pressure range from 5 to 125 PSI. 1/4", 1/2", 3/4", 1", 1 1/2", 2", 3" PVC, PP, PVDF



**Series PRS**  
Optional patented Stabilizer is used with Series PRA. The Stabilizer reacts to downstream liquid pressure and provides continuous feedback control to the compressed air supply, for the ultimate regulator sensitivity and performance. PVC, PP, PVDF, PTFE



**Series PRD/PRDM**  
Differential pressure regulator eliminates overpressure across a bank of filters, etc. via tubing connected downstream. Set range to 50 PSI. 1/4", 1/2", 3/4", 1", 1 1/2", 2", 3" PVC, PP

### ULTRA PURE PRESSURE REGULATORS



**Series PRHU**  
Kynar machined body with metal ion-free EPDM rolling diaphragm, IPS or metric spigot connections. Highest flow performance in ultra-pure valve with 10 to 125 PSI set range. 1/2" - 3" or 20 mm - 90 mm Kynar 740 PVDF



**Series UPR**  
Kynar machined body with no wetted elastomers; variable area PTFE diaphragm provides excellent pressure response. UPR is a non-shutoff design with 5 to 100 PSI set range. 1/4" NPT or Flare; PVDF or PTFE 20, 25, 32, 50, 63mm spigot; PVDF

### PROCESS COOLING WATER STICK



**Series PCWS**  
Supply side stick strengthens piping and reduces installation costs. Configurations include options with or without ball valve, diaphragm valve, y-strainer, pressure regulator, pressure gauge, Tridicator, and a variety of connection types. 1/2", 3/4", 1", 1 1/2", 2" PVC, CPVC



**Series PCWR**  
Return stick strengthens piping and reduces installation costs. Configurations include options with or without ball valve, diaphragm valve, flow meter, pressure gauge, Tridicator, and a variety of connection types. 1/2", 3/4", 1", 1 1/2", 2" PVC, CPVC

### SOLENOID VALVES



#### Series EASYMT/EASMT

Normally-closed design/energize to open. Million-cycle design featuring PTFE bellows; direct acting. Available with choice of rectified coil or rectified "Z-Cool"

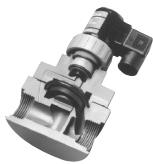
energy saving 24 watt coil. 120/60, 24/60, 240/60 AC or 24V DC 1/4", 1/2", 3/4", 1" sizes with 3/8"-1 1/16" main orifice  
PVC, CPVC, GPP, PVDF



#### Series EAST

Compact, normally-closed design/energize to open. Million-cycle design featuring PTFE bellows; direct acting. Available with 11 watt, NEMA 4X coil.

120/60, 24/60, 240/60, 230/50 AC or 24V DC 1/4", 1/2" sizes with 3/16" or 1/4" main orifice  
PVC, PP, PVDF



#### PS

Pilot-operated, normally-closed design/energize to open. Million-cycle high flow rate valve features PTFE bellows; require pressure differential to function. Available with 11 watt, NEMA 4X coil.

120/60, 24/60, 240/60, 230/50 AC or 24V DC 1/4", 1/2", 3/4", 1", 1 1/2", 2", 3"  
PVC, CPVC, PP, PVDF

### SPECIAL-PURPOSE SOLENOID VALVES



#### Series EASY

Normally-open design/energize to close for process requiring continuous flow with occasional shutoff. Available with choice of rectified coil or rectified "Z-Cool"

energy saving 24 watt coil. 120/60, 24/60, 240/60 AC or 24V DC 1/4", 1/2" sizes with 1/4" main orifice  
PVC



#### Series THP

3-way valve, also known as a diverter valve. Direct acting. Available with choice of rectified coil or rectified "Z-Cool" energy saving 24 watt coil.

120/60, 24/60, 240/60 AC or 24V DC 1/4", 1/2" sizes with 1/8", 3/16" or 1/4" main orifice  
PVC

### AIR RELEASE & DEGASSING VALVES



#### Series ARV

Provides rapid expulsion of air at start-up; seals bubble-tight while system operates. Dust cap optional.

1/2", 3/4", 1", 1 1/4", 1 1/2", 2", 3", 4"  
PVC, CPVC, PP, PVDF



#### Series DGV

Provides continuous venting of trace amounts of air/gas as it occurs during system operations.

1/2"  
PVC, CPVC, PP, PVDF, Clear Acrylic



#### Series CARD

Combines ARV initial volume venting & DGV continuous trace venting in one unit.

1", 2", 4"  
PVC, CPVC

### PULSATION DAMPENER/SUPPRESSOR



#### Series PDS

Performs six functions to improve system performance: Pulsation Dampener smooths pump flow, Surge Suppressor absorbs vibrations, Water Hammer

Arrestor, Inlet Stabilizer enhances pump operation, Accumulator releases stored fluid during unwanted pressure drops, Expansion Tank protects system from thermal volume increases. 10, 50 and 180 cubic inch capacity in 1", 2", 3" connection, respectively.  
PVC, CPVC, PP, PVDF

### SHUTOFF VALVES



#### Series BSDA/BS DAM

Air operated, compact PTFE diaphragm valve for drain applications and pressures to 100 PSI.

1/4", 1/2", 3/4", 1", 1 1/2"  
PVC, CPVC, PP, PVDF, PTFE

#### Series BSR/BSRM

Air operated, balanced shaft design assures bubble tight shutoff with automatic spring return.

1/2", 3/4", 1", 1 1/2", 2"  
PVC, PP



#### Series MFR

Hand or foot operated manual valve. Press to open, automatic spring return closure.

1/2", 3/4"  
PVC



#### Series HSA

Air operated pinch valve ideal for slurries or particulate. EPDM sleeve closes bubble-tight around media.

1/2", 3/4", 1"  
PVC, CPVC, PP, PVDF

### FLOW CONTROL VALVES



#### Series FC

Internal snubber and orifice plate maintains constant, pre-set flow despite pressure fluctuations. Flow rate is tamper-proof and available from 1/4 GPM to 120 GPM.

1/4", 1/2", 3/4", 1", 1 1/4", 1 1/2", 2", 3"  
PVC

### GAUGE GUARDS & INSTRUMENTATION



#### Series GGS

Heavy duty instrument isolator; 1/2" process connection with steel reinforced 1/4" instrument connection. Available with or without pressure or vacuum gauges. Standard instrument has 2 1/2" gauge face with stainless

steel case. Options include center back mount, acrylic shield for harsh environments, snubber, liquid filled face.

PVC, CPVC, GPP, PP, PVDF



### Series GGMU

Ultrapure, zero deadleg instrument isolator with spigot connections. Available with or without pressure gauge. Standard instrument has 2 1/2" gauge face

with stainless steel case. Options include DI water fill and high purity clean/double bag procedure.  
PVC, PP, PVDF



### Series GGSLE

Isolated pressure or vacuum transducer based on Series GGS. PVC, CP, PP, PF



### Series PT

Combination 0-160 PSI pressure and 0-180°F temperature "Tridicator" gauge. Brass connection with 2 1/2" gauge face or stainless steel connection with 3" gauge face.



### Series SWT

PTFE diaphragm pressure switch features no wetted metals or elastomers. 16, 25, or 3 Amp models.  
PVC, CPVC, PP, PVDF



### Series DPG/DPGS

Differential pressure gauge with or without switch. 1/4" connection with 2 1/2" easy-to-read gauge face; 0-15 or 0-30 PSID.  
PVC, CPVC



### Series DPI/DPIS

Differential pressure indicator with or without switch. 1/8" connection with 1" green/red indicator gauge; 0-15 or 0-30 PSID.  
PVC, CPVC



### Series FIG/FIGS

Variable area flow indicator with or without switch. 1/4" or 1/2" connection with high visibility gauge; 0-1, 0-2, 0-5, 0-10 PSID.  
PVC, CPVC



### Series DPFM

Differential pressure flow meter provides clear, understandable flow rate with smaller footprint than typical flow meters. 1/2" or 2" sizes with variety of GPM ranges. PVC, CPVC



### Series CC

Calibration columns feature 100% UV-resistant PVC; remain clear and easy-to-read for years. Rapid fill rates and longer testing periods improve efficiency and accuracy.  
100, 250, 500, 1000, 2000 and 4000 ML

## SIGHT GLASSES & LEVEL INDICATORS



### Series GX

Single-wall sight glass for liquids compatible with acrylic. Fluttering streamers optional.  
1/2", 3/4", 1", 1 1/4", 1 1/2", 2", 3"  
PVC, PP



### Series GY

Double-wall sight glass for liquids compatible with Pyrex inner wall. Fluttering streamers optional.  
1/2", 3/4", 1", 1 1/4", 1 1/2", 2", 3"  
PVC, PP



### Series GYW

Double-wall sight glass for liquids compatible with Pyrex inner wall. Flange connections; fluttering device optional.  
1 1/2", 2", 3", 4", 6", 8"  
PVC, CPVC, PP, PVDF, PTFE



### Series GL

Double-wall level indicator for liquids compatible with Pyrex inner wall. 1', 2', 3' or 4' lengths.  
1/2", 3/4"  
PVC, PP, PTFE

## AIR OPERATED DUMP VALVE



### Series IDA

Extra high capacity dump valve with spring-return or air x air operation. Drains faster than any competitive quick dump.  
4", 5", 6"  
PVC, PP, PVDF

## AIR OPERATED METERING PUMP



### Series VPA

Metering pumps are air-operated, self-priming, positive displacement type pumps designed to meter precise quantities of liquids for dosing or filling, accurate to 1/2 of 1%. The

four sizes of pumps available have a single stroke maximum delivery capacity of 7, 10, 32 or 128 liquid ounces, adjustable to deliver smaller portions.  
PVC, PP, PVDF

## MANUAL BALL VALVES



### Series MBV

The engineered ball valve features trunnion ball design, dual shaft seals, large diameter shaft, mounting lugs, PTFE seats, and perfectly spherical ball. Will

outlive any competitive ball valve. NPT, socket, BSP or metric socket.  
3/8", 1/2", 3/4", 1", 1 1/4", 1 1/2", 2", 3", 4"  
or 20 - 110 mm  
PVC, CPVC, PP, PVDF



### Series TMBV

Three-way version of Series MBV with same trunnion design and features. 2-hole or 3-hole option.  
1/2", 3/4", 1", 1 1/2", 2", 3", 4"  
PVC, CPVC



### Series LMBV

Lateral reducing ball valve based on Series MBV; simplifies and strengthens lateral drops. Includes tee.  
1/2", 3/4", 1", 1 1/2", 2" valve  
3/4", 1", 1 1/2", 2", 3" tee  
PVC, CPVC, PP, PVDF

### MANUAL BALL VALVE OPTIONS



**Series MBVL**  
Lock out/tag out option. Available factory complete or as kit for retrofit.  
All sizes/materials for Series MBV.



**Series MBVM**  
Metering indicator shows degrees open. For use with regular or characterized ball valve, factory complete or as kit for retrofit. Series MBV sizes to 2" in all materials.



**Series MBVSE**  
Stem extension from 2" to 12". Factory complete or as kit for retrofit.  
Series MBV sizes to 2" in all materials.

### ACTUATED BALL VALVES



**Series ABVA/ABVS**  
Air x air or fail-safe air x spring actuator for Series MBV, 3/8" 1" sizes. Thermoplastic construction, includes direct manual override. Options include limit stop and limit switch.



**Series ABRA/ABRS**  
Air x air or fail-safe air x spring actuator for Series MBV, 1 1/4" to 4" sizes. Thermoplastic construction, most models include direct manual override  
3" & 4" designs features stainless actuator. Options include limit stop and limit switch.



**Series EPP**  
Electro-Pneumatic Positioner turns any air actuated True Blue valve into an electronic control valve. Requires ABRA/ABRS actuator for all sizes.



**Series TABVA/TABRA/S**  
3-way air actuated valves, air x air or fail-safe air x spring versions for Series TMBV.



**Series EBVB & EBVF**  
Premium multi-voltage electric actuators with manual override. Rugged water and dust tight actuator features superior thermoplastic construction built to our specifications. Options include battery backup fail-safe, 4-20 mA or 0-10 VDC electronic control.



**Series EBVC**  
Standard on/off actuator features the same rugged construction as Series EBVB/F. No-frills actuator with superior performance and longevity at a lower cost.



**Series TEBVB/TEBVF & TEBVC**  
3-way electrically actuated valves with the same features as the two-way versions above

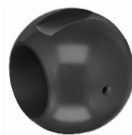
### MANUAL & ACTUATED BALL VALVE OPTIONS



**Flange Connections**  
Available for most sizes and materials, 2-way and 3-way.



**Sanitary Connections**  
Available for 2-way valves, 1/2" through 2" in PP, PVDF.



**Z-Vent Balls**  
Designed for sodium hypochlorite and other applications prone to dangerous outgassing. Vent allows trapped liquid and resulting gas to escape harmlessly downstream.

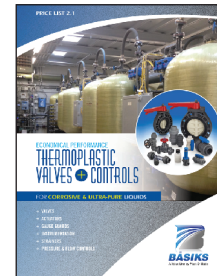


**ZC Control Balls**  
Specific angles or special linear cut enables precise control of flow rates for manual valves, or for actuated valves with electronic positioning. All 2-way sizes and materials.

### OPTIONS & ACCESSORIES

- High Purity Cleaning Procedure
- Factory setting on pressure control valves
- High Purity Flare Fittings
- Flange Connections
- High Purity Spigots
- Coated Fasteners
- Fail-Dry Sensor

### BASIS PRODUCT LINE



Value line of commodity products, manufactured to Plast-O-Matic specifications, with complete technical support. One year warranty. Most products offered with NPT, socket, metric socket, BSP or JIS.

PVC & CPVC standard; most items also available in PP, GPP & PVDF.

- Manual & Actuated Butterfly Valves and Ball Valves
- Ball Checks
- Weir Style Diaphragm Valves
- PTFE Diaphragm Backpressure Valves
- Wye Strainers
- Mini Gauge Guards
- Flow & Level Switches
- Solenoid Valves