



# *Liftchain Air and Hydraulic Hoists*

1.5-100 tons



# When Tough Just Isn't Enough

## Liftchain Air Hoists

Since 1924, Ingersoll Rand has built extremely durable and reliable winches and hoists. Designed with premium features and built using rugged cast iron and steel, Ingersoll Rand doesn't take shortcuts and never uses inferior components. Ingersoll Rand Liftchain Hoists are the most versatile heavy-lifting hoists in the Ingersoll Rand hoist line. They incorporate all the best features learned from decades of experience into a compact, modular frame. Available with 4 different suspension options in either air or hydraulic models, Ingersoll Rand hoists are the gold standard. They are often copied but never equaled. Trusted by oilmen, shore workers, miners and heavy construction crews around the globe, you can count on Ingersoll Rand Liftchain hoists to get the job done.



### Liftchain Hoist features:

- Rugged, all steel construction in a compact design for durability in all environments.
- Grade 80, corrosion resistant load chain with a 5:1 design factor
- Designed for Explosive environments. ATEX Zone 2 standard (ATEX Zone 1 package optional)
- Gear type air motor with minimal moving parts is virtually maintenance free
- Hydraulic motor offers high torque and high efficiency at low motor speed
- Fully enclosed automatic multi disc brake for corrosion protection
- Overload protection device ensures safe operation
- Upper and lower limit switches integrated in the hoist body for better protection
- Ball bearing mounted bottom hook for easier and smoother turning under load



Ship Building



Metals



Heavy Construction



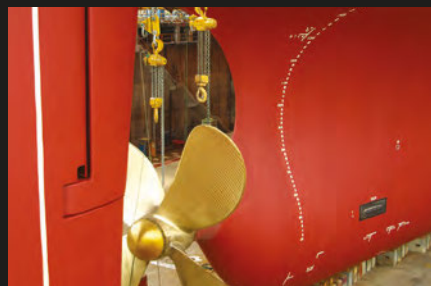
Marine



Offshore



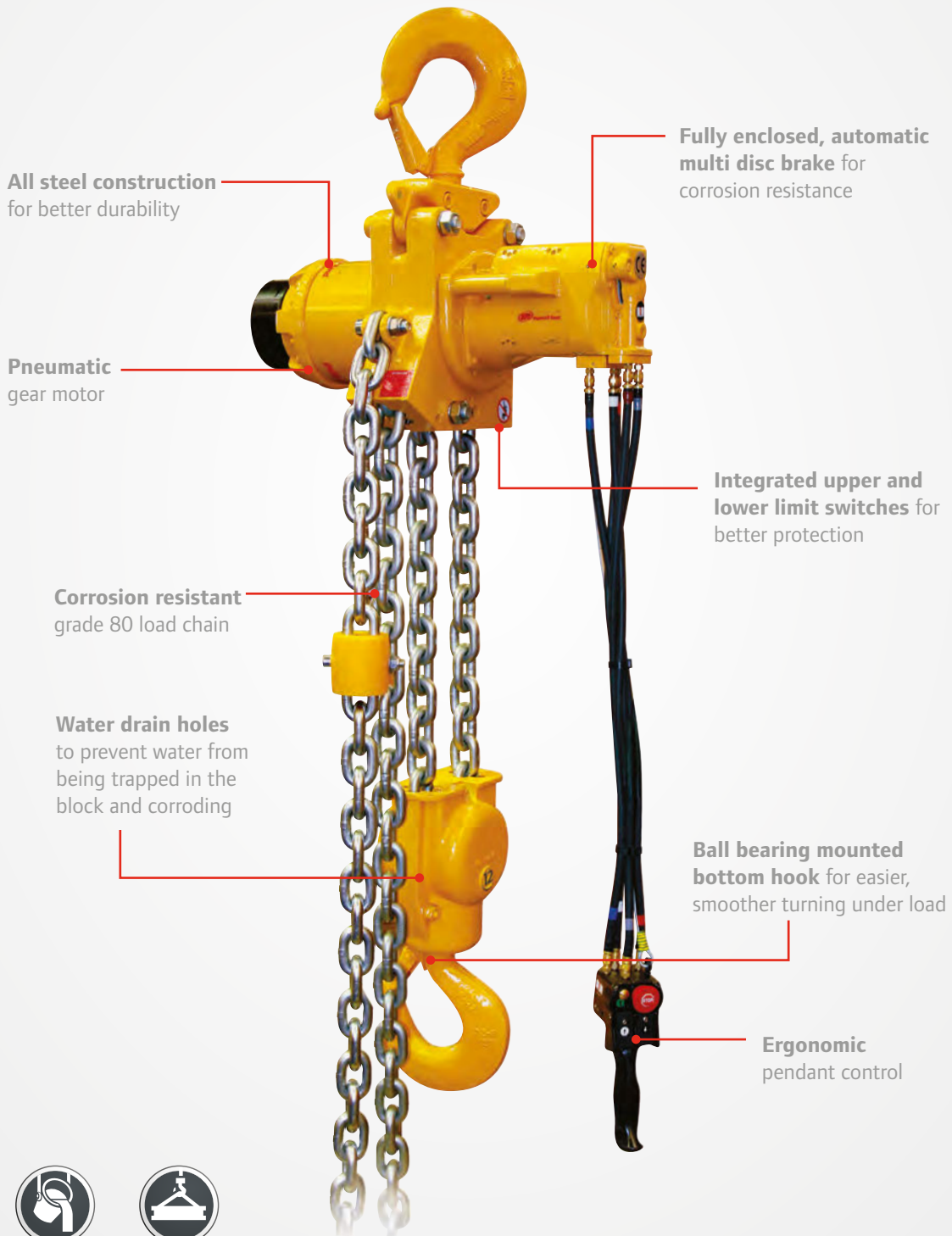
Onshore



# Liftchain Air Hoists

1.5-100 tons

Ingersoll Rand Liftchain Hoists are the most advanced heavy-lifting hoists in the Ingersoll Rand hoist line. They incorporate all the best features we've developed from our decades of experience into a compact, modular frame. Hook Mount versions offer maximum versatility to place them where you need them. Count on Liftchain hook mount hoists to get the job done.



**Ideal for:**



Shipbuilding



Metals

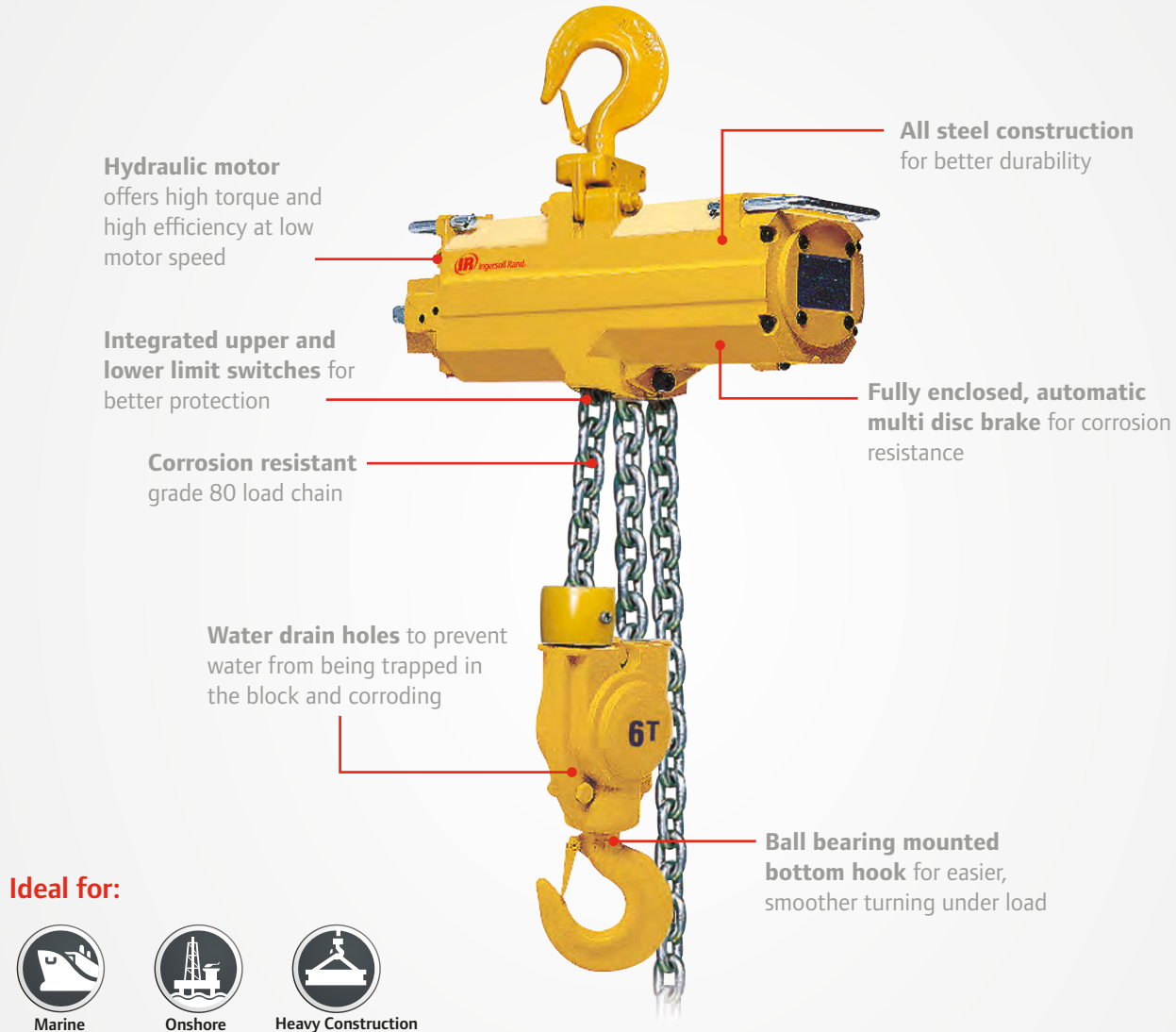


Heavy Construction

# Liftchain Hydraulic Hoists

6-100 ton

Ingersoll Rand Liftchain Hoists are the most advanced heavy-lifting hoists in the Ingersoll Rand hoist line. They incorporate all the best features we've developed from our decades of experience into a compact, modular frame. Hook Mount versions offer maximum versatility to place them where you need them. Count on Liftchain hook mount hoists to get the job done.



The LCH Series can be provided with control systems such as:

- Hydraulic control console for hoist only, hoist/trolley combination, or for complete lifting system (e.g. systems with 2 or 4 hoist trolley combination).
- Electro-hydraulic control console, also available for all types of configurations
- Hydraulic joystick control from 6 ton models with motorized trolley.
- Ergonomic pendant control



# Liftchain Suspension Options

Ingersoll Rand Liftchain Hoists are available with 4 different suspensions and include plain, geared or motorized trolley options for maximum flexibility. With a modular design and compact frame, there is an Ingersoll Rand Liftchain hoist to help you get your job done.

*Hook Mounted*



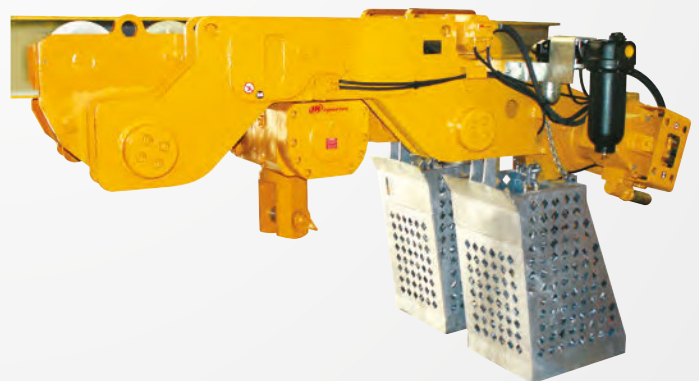
*Standard Trolley Mounted*



*Low Headroom Trolley*



*Ultra-Low Headroom Trolley*



## A Variety of Options



### *Galvanized Steel Chain Container*

Capture load chain and prevent it from interfering with the load, control cords, or other objects. Available in canvas or zinc plated steel.



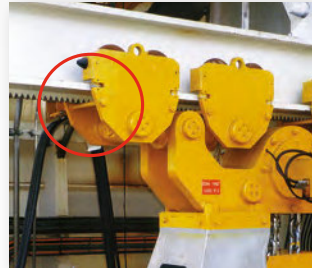
### *Clevis & Shackle Attachment*

Provides secure attachment for rope, slings or other types of equipment with built-in attachment points.



### *Airline Accessories*

High air quality is essential for reliable operation and full service life of air hoists. Airline accessories designed for Liftchain hoists include filters, regulators and lubricators.



### *Rack And Pinion Drives*

These drives are often used on floating installations or vessels. The positive drive design prevents sliding on the beam and provides precise travel positioning during operation.



### *Atex Zone 1 Package*

Construction materials are selected to match ATEX requirements. ATEX Zone 1 Spark Resistant models will have the ATEX marking EX II 2 GD c IIB 135°C.



### *Traceability Packages*

Traceability packages are available to comply with local regulations and standards. Packages available in hard copy or electronic format.

## Global Parts and Services

Ingersoll Rand winches are built to last in even the harshest conditions. We are committed to helping you keep your operation running, no matter where your facility is located. We offer a full range of parts and accessories. Plus Ingersoll Rand's global network of factory trained and authorized technicians can install, repair, test and maintain any winch. Service capabilities include:

- Load test and recertifications
- System inspections
- Equipment refurbishments
- Installation and start-up assistance
- Inspector and operator training
- Service and repair

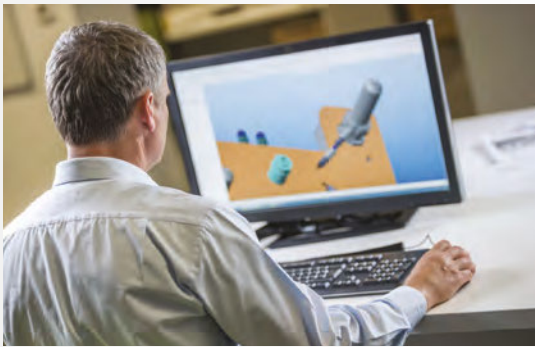


# A Tradition of Proven Reliability, Efficiency and Productivity



No matter where you are located, Ingersoll Rand is committed to serving and providing you with the necessary information with regard to our products and services. Our world-wide network of distributors, certified technicians and engineers are a telephone call away — ready to support you with innovative and cost-effective solutions that will keep your business running at peak performance.

## Special Orders



A significant portion of our business is providing customized solutions for specific applications. We recognize that not all jobs are created equal and that the most cost-effective solutions may not be in an off-the-shelf item. We've designed and manufactured winches and hoists for applications as simple as moving bags of lettuce, to as intricate as installing critical payloads on space vehicles, including high capacity loads 100 tons and above.

- Design for custom capacities
- Custom control systems
- Custom product modifications
- Witness testing and complete certification to most global standards
- Full data package with CAD drawings
- Dedicated project management for your project from conception to delivery
- Onsite services available including presale and evaluation

## For More Information



[www.ingersollrandproducts.com/lifting](http://www.ingersollrandproducts.com/lifting)



[lifting@irco.com](mailto:lifting@irco.com)



Ingersoll Rand (NYSE:IR) advances the quality of life by creating comfortable, sustainable and efficient environments. Our people and our family of brands—including Club Car®, Ingersoll Rand®, Thermo King® and Trane®—work together to enhance the quality and comfort of air in homes and buildings; transport and protect food and perishables; and increase industrial productivity and efficiency. We are a \$12 billion global business committed to a world of sustainable progress and enduring results.



[www.ingersollrandproducts.com](http://www.ingersollrandproducts.com)

Distributed by:

Ingersoll Rand, IR, the IR logo are trademarks of Ingersoll Rand, its subsidiaries and/or affiliates. All other trademarks are the property of their respective owners.

Unless otherwise noted this equipment is not designed for transporting people or lifting loads over people. It is the user's responsibility to determine the suitability of this product for any particular use and to check compliance with applicable regulations. Before installation, see maintenance and operations manual for additional warnings and precautions.

Nothing contained on these pages is intended to extend any warranty or representation, expressed or implied, regarding the product described herein. Any such warranties or other terms and conditions of sale of products shall be in accordance with Ingersoll Rand's standard terms and conditions of sale for such products, which are available upon request.

Product improvement is a continuing goal at Ingersoll Rand. Designs and specifications are subject to change without notice or obligation.