

The Type 565 Wafer Style Butterfly Valve

The Type 565 Butterfly Valve is designed as a tough, yet lightweight direct replacement for typical metal butterfly valves. It is rated at PN16 for sizes 2"-6", PN10 for sizes 8"-10", and PN6 for size 12".

Part Numbers



Lever

Size (Inch)	EPDM	FKM
2	199565000	199565020
2½	199565001	199565021
3	199565002	199565022
4	199565003	199565023
5	199565004	199565024
6	199565005	199565025
8	199565006	199565026
10	-	-
12	-	-

Bareshaft

Size (Inch)	EPDM	FKM
2	199565100	199565120
2½	199565101	199565121
3	199565102	199565122
4	199565103	199565123
5	199565104	199565124
6	199565105	199565125
8	199565106	199565126
10	199565107	199565127
12	199565108	199565128

Gear: G-CI (Standard)

Size (Inch)	EPDM	FKM
2	150565200	150565220
2½	150565201	150565221
3	150565202	150565222
4	150565203	150565223
5	150565204	150565224
6	150565205	150565225
8	150565206	150565226
10	150565207	150565227
12	150565208	150565228

Gear: G-AL (Optional)

Size (Inch)	EPDM	FKM
2	199565200	199565220
2½	199565201	199565221
3	199565202	199565222
4	199565203	199565223
5	199565204	199565224
6	199565205	199565225
8	199565206	199565226
10	199565207	199565227
12	199565208	199565228

Valve Seals

Reinforced Disc

The Type 565 Butterfly Valve is designed with a reinforced PVDF disc for improved strength. This rugged design is impact resistant, but does not compromise easy operation. The wetted PVDF disc material features superior surface finish and lubricity, while its Durethan® reinforcement provides lightweight toughness.



Replacement Seat Liner

The seat liner of the Type 565 Butterfly Valve is removable. If desired, the seat liner can be replaced with either an EPDM or FKM variant.



Size (Inch)	EPDM	FKM
2	199565930	199565940
2½	199565931	199565941
3	199565932	199565942
4	199565933	199565943
5	199565934	199565944
6	199565935	199565945
8	199565936	199565946
10	199565937	199565947
12	199565938	199565948

Double Redundant Seals

The Type 565 Butterfly Valve features a truly non-wetted shaft design. The shaft is isolated from the flow media by utilizing a disc-hub seal and double redundant o-rings. This industry tested design ensures a reliable seal for a variety of applications.



Replacement O-Ring

The o-ring on the Type 565 Butterfly Valve can be replaced with either an EPDM or FKM variant.



Size (Inch)	EPDM	FKM
2-3	199565951	199565961
4-5	199565952	199565962
6-8	199565953	199565963
10-12	199565954	199565964

Feedback

Inductive Double Switches

The Type 565 Butterfly Valve is offered with inductive switches that signal the CLOSED or OPEN position of the valve via an electric signal to a controller supplied by the customer. This feedback system can be added with the valve in-line and a new switch swapped without removing the operator.

The feedback system consists of the double sensing switch and a switch ring sold separately. The switch ring is installed by removing the operator and sliding it over the shaft. The switch is installed by removing the rubber +GF+ cover.

Switch Part Numbers

The switch for the Type 565 Butterfly Valve provides electrical feedback to signal the valve's position.



Open Signal Color	Closed Signal Color	Output Circuit	Part Number
LED red	LED green	PNP	198546001
LED green	LED red	PNP	198546002

Reduction Gear

The Type 565 Butterfly Valve is offered with three styles of manually actuated reduction gears. All gear operators are supported on all sizes of this valve. The gear operators are mounted directly to the valve using the intermediate kit.



Size (inch)	G-CI (Standard)	G-AL	G-SS
2-8	150483471	161483471	150483491
10-12	150483472	161483472	150483492

Switch Ring

The switch ring for the Type 565 Butterfly Valve provides mechanical feedback for the switch to signal the valve's position.



Size (Inch)	Part Number
2-3	199565900
4-5	199565901
6-8	199565902
10-12	199565903

Standard Operators

Hand Lever

The Type 565 Butterfly Valve is offered with an optional hand lever. Hand levers are only supported on valves sized 2"-8".



Size (Inch)	Part Number
2-3	199565906
4-5	199565907
6-8	199565908

Reduction Gear Intermediate Kits

In order to utilize a reduction gear, the corresponding intermediate kit is required.

Size (inch)	Part Number
2-3	150800200
4-5	150800201
6-8	150800202
10-12	150800203

Additional Operators

Chain Operator

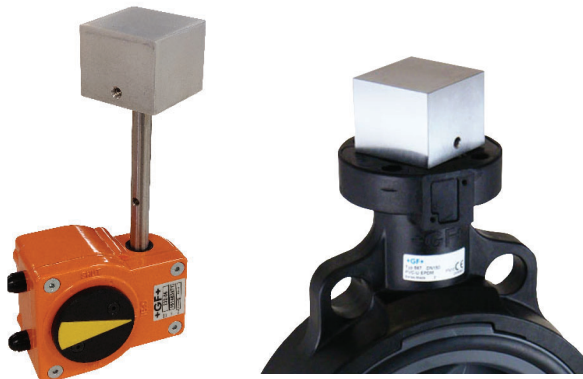
The Type 565 Butterfly Valve is offered with a chain operator that is to be used with a gear operator. The chain operator is attached to the hand wheel in order to operate the valve if it is suspended in the air.



Description	Part Number
Chain Operator with Safety Cable	150101626
Hand Wheel (2"-12")	150101609
Chain (per foot)	150101618
Masterlink	150101616

Square Operating Nut

The Type 565 Butterfly Valve is offered with an optional square nut for direct mount or gear operator mount.



Size (Inch)	Direct Mount	Gear Mount
2-3	150900454	150901626
4-5	150900456	150901626
6-8	150900457	150901626
10-12	150900459	150901626

Stem Extension

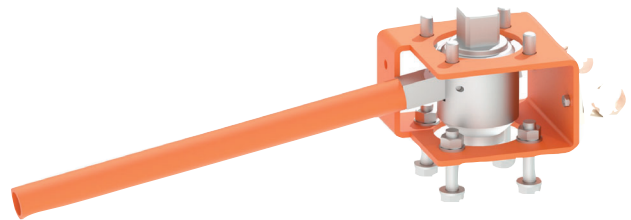
The Type 565 Butterfly Valve is offered with optional stem extensions that allows for manual valve operation far from the valve itself. Stem extensions are ordered by the foot.



Size (Inch)	SS 316/SS 316	PVC/SS 316
2-3	150567001	150567501
4-5	150567002	150567502
6	150567003	150567503
8	150567004	150567504
10-12	150567005	150567505

Manual Override

A manual override is offered for the 565 Butterfly Valve as an optional accessory.



Size (Inch)	Part Number
2-3	199565914
4-5	199565915
6-8	199565916