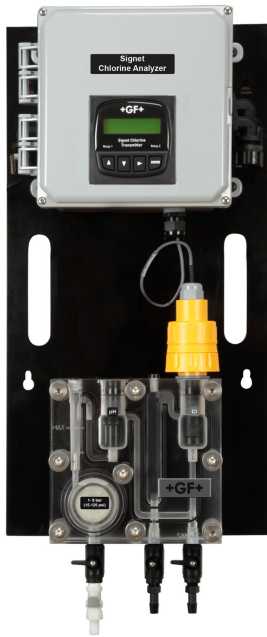


Signet 4632 Chlorine Dioxide Analyzer System



The Signet 4632 Chlorine Dioxide Analyzer System is an integrated all-in-one system designed to measure Chlorine Dioxide residual up to 2 ppm/mg/l.

The unique integrated clear flow cell combines sensors, flow regulator, filter and variable area flow indicator in one compact unit. An integrated flow regulator with removable filter accepts inlet pressures of 1 to 8 bar (15 to 120 psi), while maintaining constant flow and minimal pressure to the sensors.

Water flows vertically into sensor tip eliminating bubble entrapment. The flow cell is designed to maintain a minimum amount of water to ensure sensors stay submerged, even when the system and flow is turned off.

The Signet 4632 Chlorine Dioxide Analyzer System allows quick setup and easy installation and is supplied with a 100-240 VAC power supply, two 4 to 20 mA outputs and two dry contact mechanical relays.

Features

- Reagent free measuring
- Complete panel system allows for quick and easy installation
- Built-in flow regulator maintains constant flow and pressure to the sensors regardless of inlet pressure
- Pre-wired panel includes a 100/240 VAC power supply, two 4 to 20 mA outputs and two mechanical relays



Applications

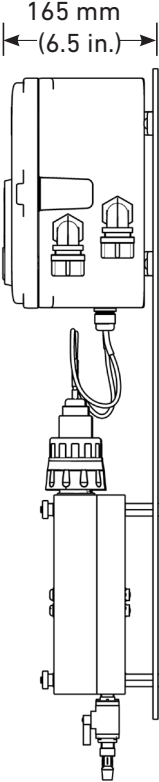
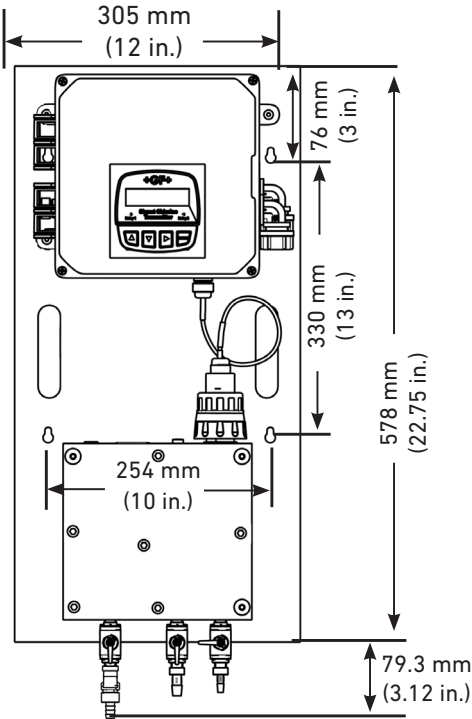
Residual Chlorine Monitoring:

- Cooling Towers
- Fruit and Vegetable Washing
- Water Distribution
- Wastewater Odor Control
- Poultry and Meat Processing
- UPW Treatment
- Hospital and Healthcare Facilities

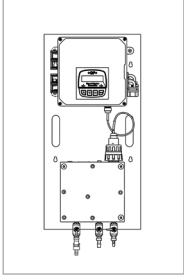
Specifications

| General | | |
|---|---|------------------|
| Compatible | 3-2632-1 Chlorine Dioxide Electrode, 0 to 2 ppm / 3-2650-7 Amperometric Electronics | |
| Materials | | |
| Panel | Black Acrylic | |
| Flow Cell | Acrylic | |
| Wiring Enclosure | Polycarbonate | |
| Wetted Materials | | |
| Flow Cell, Spacer Rings | Acrylic | |
| Flow Regulator Housing | Polycarbonate | |
| Strainer, E-clip, Regulator Spring, Float | Stainless Steel | |
| Valves, Vent | Polypropylene | |
| Flow Cell O-rings, Diaphragm | EPDM, FKM | |
| Chlorine Electrode | PVC, PTFE, FKM, Nylon, Silicone | |
| pH Electrode | PPS, Glass, UHMW PE, FKM | |
| Sealing Tape on Valves, Plug and Vent | PTFE | |
| Plug | Polyethylene | |
| Max. Temperature/Pressure Rating | | |
| System Inlet Pressure Rating | 1 to 8 bar | 15 to 120 psi |
| Pressure Regulator | < 0.69 bar (10 psi) variation over all ranges of flow and pressure | |
| Flow Tolerance | ± 15% or rated specification above | |
| Flow Rate Limits | 30.24 to 45.36 LPH | 8 to 12 US gal/h |
| Storage Temperature | 0 °C to 65 °C | 32 °F to 149 °F |
| Operating Temperature | 0 °C to 45 °C | 32 °F to 113 °F |
| Electrical | | |
| AC Input - Standard Configuration | 100 to 240 VAC nominal 50 to 60 Hz, 0.17 A at 100 VAC | |
| DC Input - Optional Configuration | 12 to 24 VDC ±10% regulated, 250 mA max. | |
| Environmental | | |
| Relative Humidity | 0 to 95% | |
| Maximum Altitude | 2000 m (6,562 ft) | |
| Enclosure | NEMA 4X (with output wire glands sealed) | |
| Shipping Weight | | |
| | 10 kg | 22 lb |
| Standards and Approvals | | |
| | CE, UL, CUL, FCC | |
| | China RoHS | |
| | Manufactured under ISO 9001 for Quality and ISO 14001 for Environmental Management and OHSAS 18001 for Occupational Health and Safety | |

Dimensions



Ordering Information



| Mfr. Part No. | Code | Description |
|---------------|--------------------|--|
| 3-4632-10 | 159 001 768 | Chlorine Dioxide Panel, 0.02 to 2 ppm/mg/l, no pH sensor |
| 3-4632-11 | 159 001 769 | Chlorine Dioxide Panel, 0.02 to 2 ppm/mg/l, with pH sensor |

Accessories and Replacement Parts

| Mfr. Part No. | Code | Description |
|---------------|--------------------|---|
| 3-2632-1 | 159 001 767 | Chlorine Dioxide Electrode, 0 to 2 ppm (mg/L) |
| 3-2650-7 | 159 001 670 | Chlorine - In-line Amperometric Electronics, digital (S ³ L), 4.6 m (15 ft) cable |
| 3-2724-00 | 159 001 545 | pH Sensor, Flat Glass, Pt1000 Temp Element, 3/4 in. MNPT |
| 3-2750-7 | 159 001 671 | pH - In-line Electronics, digital (S ³ L) , 4.6 m (15 ft) cable |
| 3-8630-3P | 159 001 673 | Panel Mount Chlorine and pH Transmitter |
| 3-4630.390 | 159 001 688 | Rebuild Kit: O-rings, boots, screws, 1 filter screen |
| 3-4630.391 | 159 001 689 | Pressure Regulator with 1 spare filter screen |
| 3-4630.392 | 159 001 690 | Acrylic Flow Cell Complete with all components and connections |
| 3-2632.391 | 159 310 160 | Chlorine Dioxide Electrolyte, 30 mL (2) bottles |
| 3-2632.398 | 159 310 165 | Chlorine Dioxide Maintenance Kit - (2) electrolyte, (2) PTFE membranes, (2) silicone bands, and polishing paper |
| 3-2630.394 | 159 310 164 | Free Chlorine and Chlorine Dioxide Replacement PTFE membrane (1) |
| 7300-0024 | 159 001 693 | 24 VDC Power Supply |