



# FMX 100

## 1" x 1" Self Priming Centrifugal Pump

The patented 1" x 1" FMX100 self-priming centrifugal pump is constructed of 316 SS for superior corrosion resistance and compatibility with most fluid types. A type 6A carbon / ceramic / viton mechanical seal is standard. With a maximum flow of over 55 GPM and pressure capabilities of nearly 60 feet, this rugged self-priming pump is capable of 17 feet suction lift when operating at 3450 RPM.

The FMX 100 has numerous applications in industries such as: construction, petroleum, diesel exhaust fluid, marine and marine air conditioning, agriculture for biocides and liquid fertilizers, and numerous industrial applications such as brine and calcium chloride.

ABS Type Approval for the FMX 100 - [Download PDF](#)

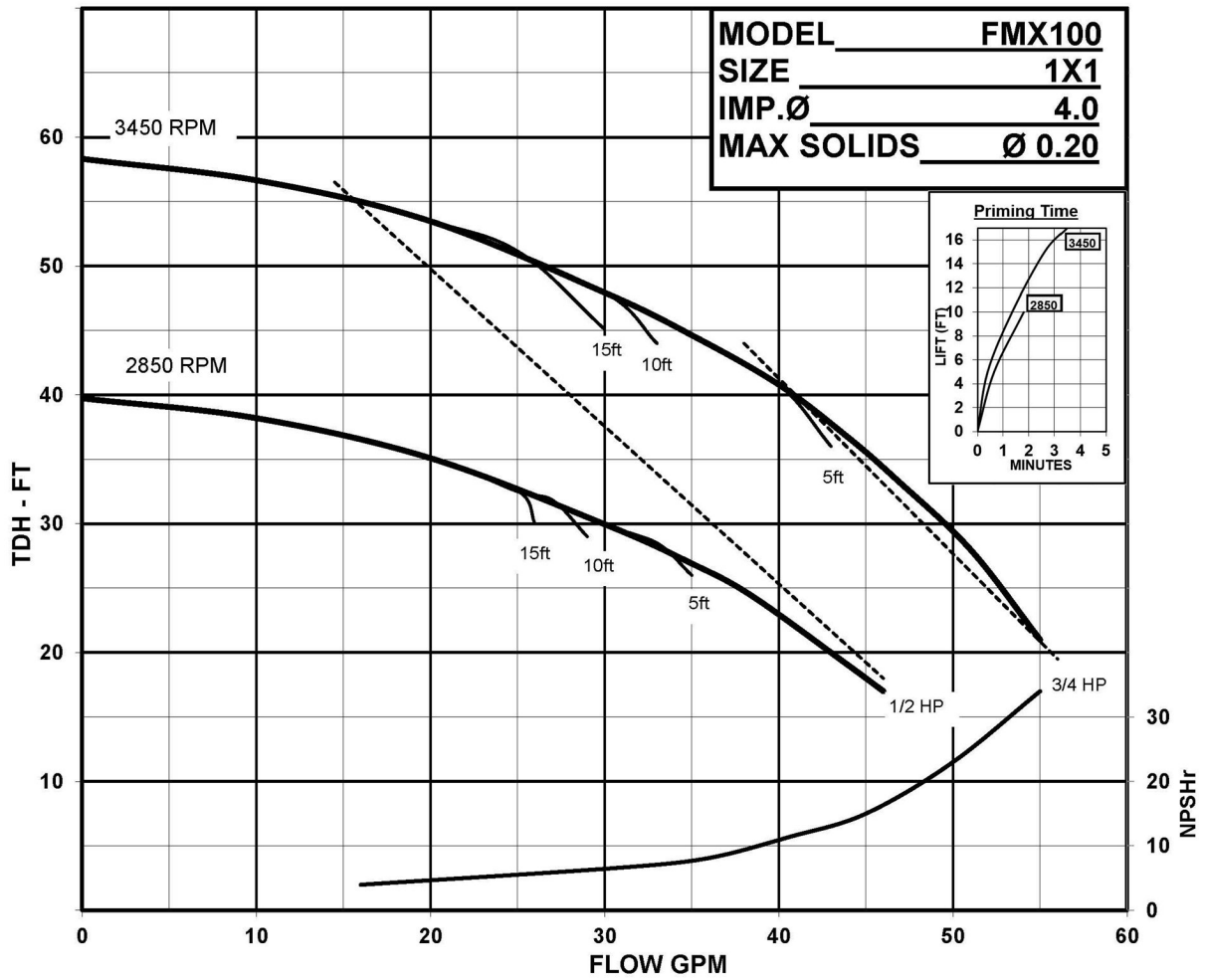
### SPECIFICATIONS:

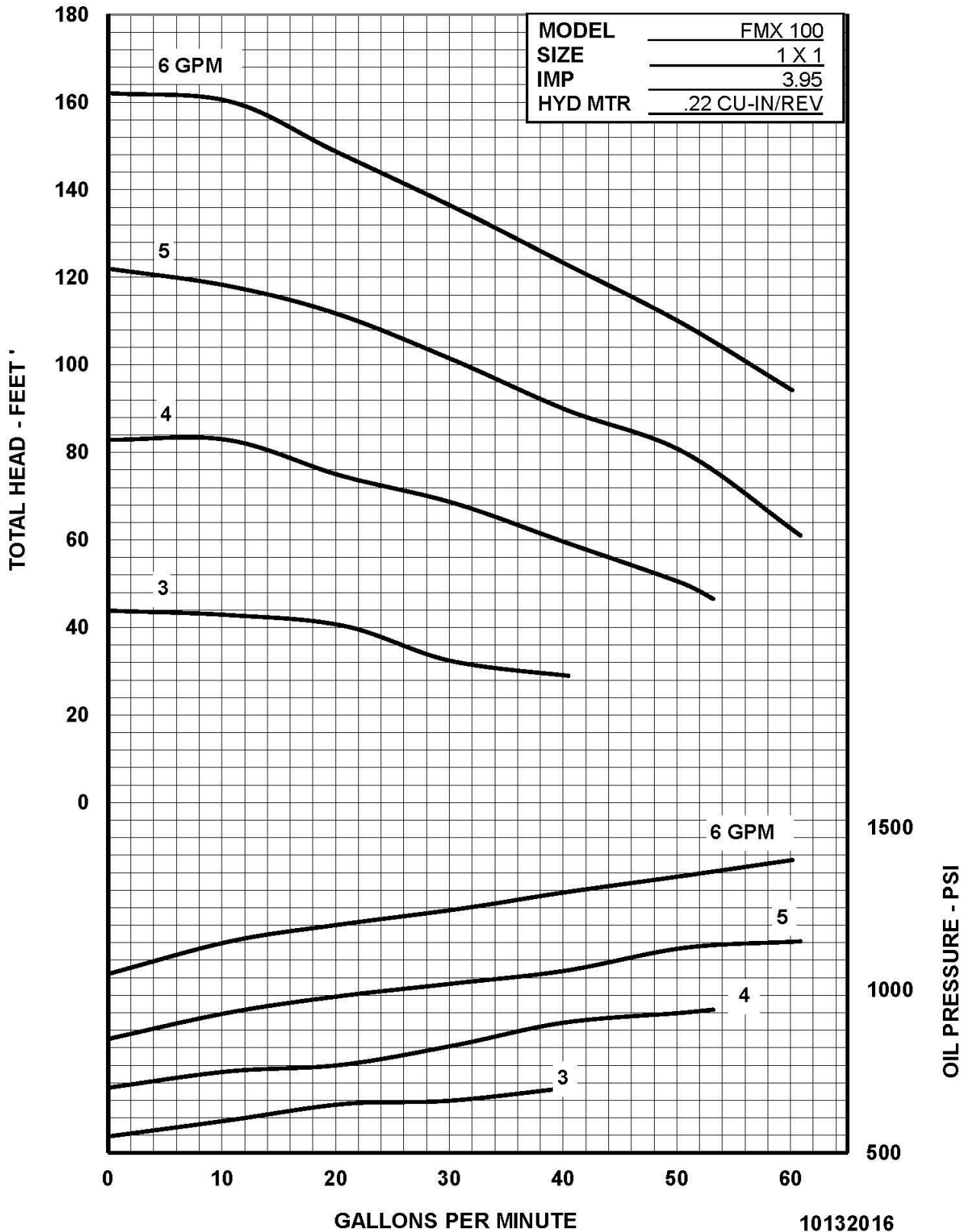
Materials Of Construction	316 stainless steel
Flow	Up to 55 GPM
Head Feet	60'
Impeller	4.0"
Drive Options	Close Coupled 1 HP TEFC IEC80B34 Motor, Close coupled 3/4HP TEFC IEC80B34 Motor, Engine Mount for 5/8" Shaft, Pedestal Hydraulic
Seal	Type 6A carbon/ceramic/viton
Suction	1"
Discharge	1"



### Application

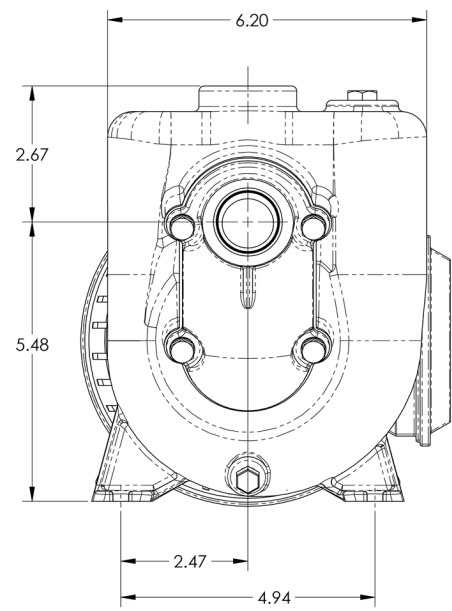
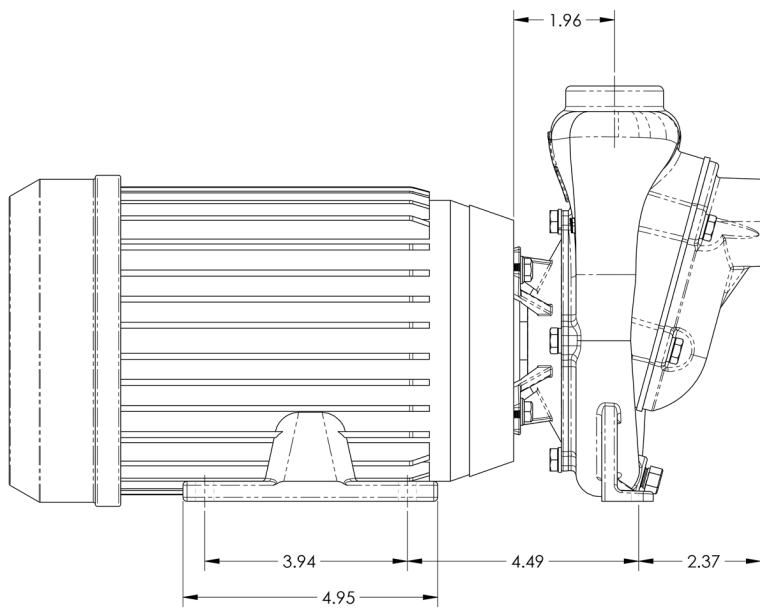
- Agricultural
- Commercial
- Industrial
- Marine





DRAWING NO

## 39467

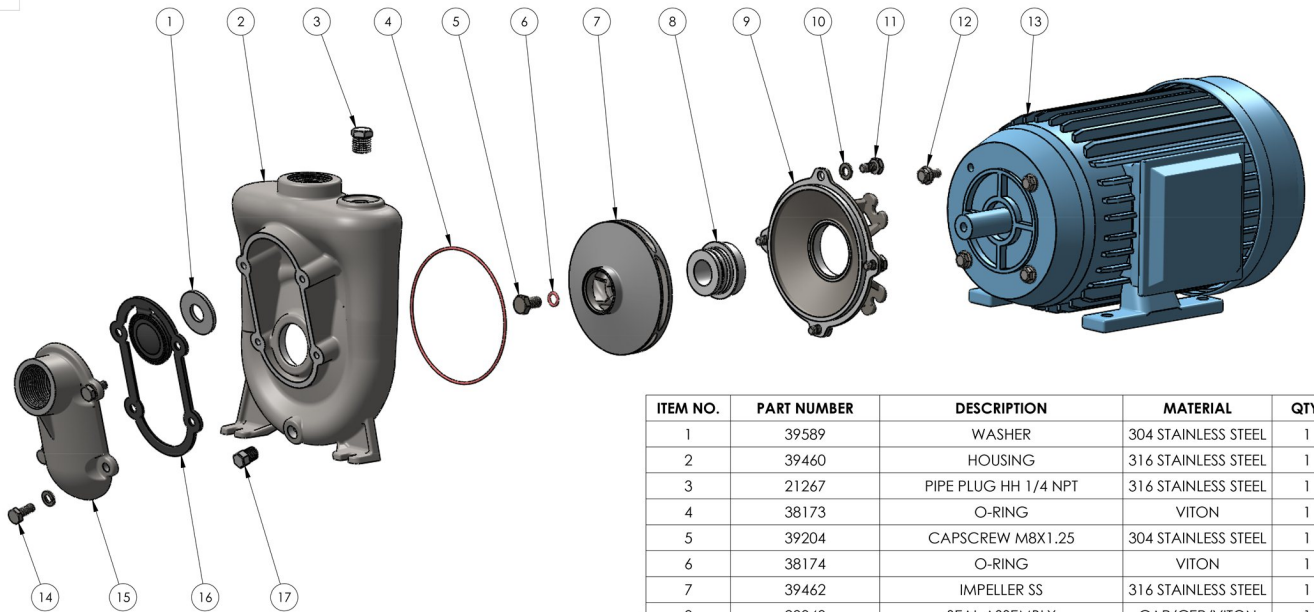


NOTE: THIS DRAWING OR PRINT, PROPERTY OF MP PUMPS INC., CONTAINS PROPRIETARY AND CONFIDENTIAL INFORMATION. IT SHALL BE USED ONLY AS APPROVED BY MP PUMPS AND SHALL NOT BE GIVEN TO OTHERS OR COPIED WITHOUT THE WRITTEN CONSENT OF MP PUMPS. RETURN TO MP PUMPS PROMPTLY WHEN REQUESTED.

G						UNLESS OTHERWISE NOTED THIRD ANGLE PROJECTION		<b>MP PUMPS, INC.</b> FRASER, MICHIGAN 48026, U.S.A.			
F						2 PLACE DIM $\pm .020$ 3 PLACE DIM $\pm .010$ ANGULAR DIM $\pm 1^\circ$					
E						DO NOT SCALE		MATERIAL SPECS			
D						DRAWN BY	DATE COMP.	APPROV.	SCALE	MADE FOR	MADE FROM
C						S.F.	10/15/14	D.D.			
B						NAME					DRAWING NO
A	ENG. RLS.	SF	4/13/15	JM	FMX100 SS: 3/4-3 IEC80					39467	
REV	DESCRIPTION	DRAWN	DATE	EN							



DRAWING NO  
39467



ITEM NO.	PART NUMBER	DESCRIPTION	MATERIAL	QTY.
1	39589	WASHER	304 STAINLESS STEEL	1
2	39460	HOUSING	316 STAINLESS STEEL	1
3	21267	PIPE PLUG HH 1/4 NPT	316 STAINLESS STEEL	1
4	38173	O-RING	VITON	1
5	39204	CAPSCREW M8X1.25	304 STAINLESS STEEL	1
6	38174	O-RING	VITON	1
7	39462	IMPELLER SS	316 STAINLESS STEEL	1
8	28048	SEAL ASSEMBLY	CAR/CER/VITON	1
9	38166	ADAPTER	304 STAINLESS STEEL	1
10	33564	LOCKWASHER 1/4"	304 STAINLESS STEEL	8
11	21504	1/4-20 X .63 HEX. HD. CAPSCREW	316 STAINLESS STEEL	4
12	38185	CAPSCREW HEX FLANGE	STEEL	4
13	39344	ELECTRIC MOTOR	80 FRAME	1
14	35039	CAPSCREW 1/4-20X5/8	316 STAINLESS STEEL	4
15	39463	COVER	316 STAINLESS STEEL	1
16	39465	FLAPPER	VITON	1
17	21255	PIPE PLUG 1/8" NPT	316 STAINLESS STEEL	1

G		UNLESS OTHERWISE NOTED		MP PUMPS, INC.	
F		THIRD ANGLE PROJECTION		FRASER, MICHIGAN 48024, U.S.A.	
E		2 PLACE DIM ± .020		MATERIAL	
D		3 PLACE DIM ± .010		MATERIAL SPEC	
C		ANGULAR DIM ± 1°		DRAWN BY DATE CORR. APPROV. SCALE MADE FOR	
B		DO NOT SCALE		S.F. 10/15/14 D.D.	
A		ENG. RLS. SF 4/13/15 JM		NAME	
REV. DESCRIPTION DRAWN DATE EN		FMX100 SS: 3/4-3 IEC80		DRAWING NO 39467	

NOTE: THIS DRAWING OR PRINT, PROPERTY OF MP PUMPS INC., CONTAINS PROPRIETARY AND CONFIDENTIAL INFORMATION. IT SHALL BE USED ONLY AS APPROVED BY MP PUMPS AND SHALL NOT BE GIVEN TO OTHERS OR COPIED WITHOUT THE WRITTEN CONSENT OF MP PUMPS. RETURN TO MP PUMPS PROMPTLY WHEN REQUESTED.

