

Technical Bulletin - TMA Series Multistage Centrifugal Pump



Model Show: TMA 50-9/1X-C/F with a 100 HP motor

Application: Mining Dewatering

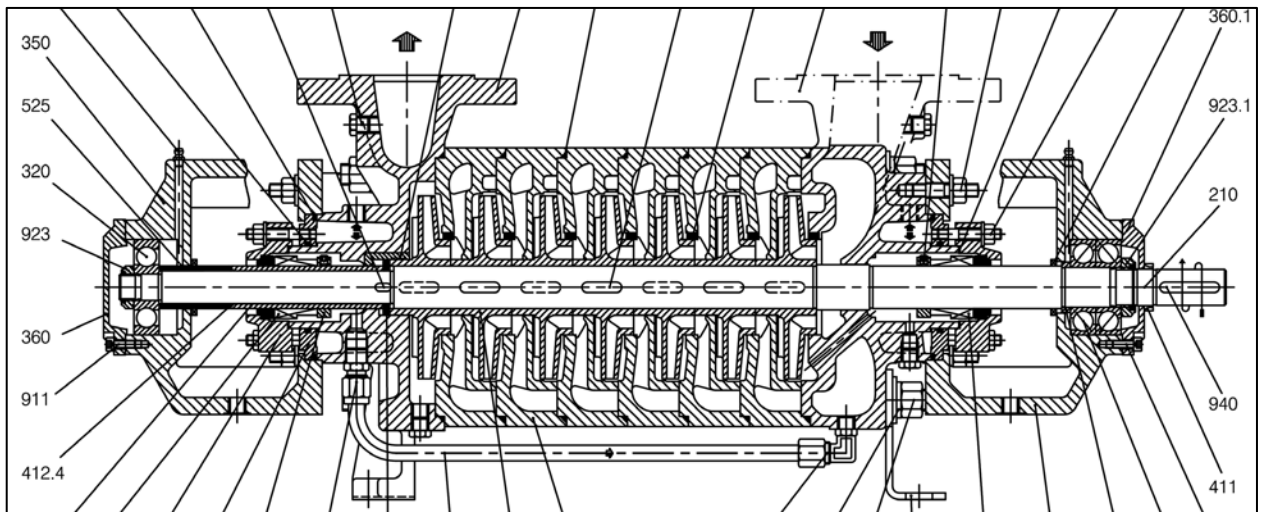
Pump Construction: Ductile iron casing, cast iron impeller, stage casing, and bearing & mechanical seal housing, and 420SS shaft

Design Conditions: 200 GPM @ 1050 ft TDH - Nine Stage Pump

TMA Temperature Range: 320 F

TMA Pressure Range: 580 PSIG

Common Applications: Boiler Feed and High Pressure Wash Down



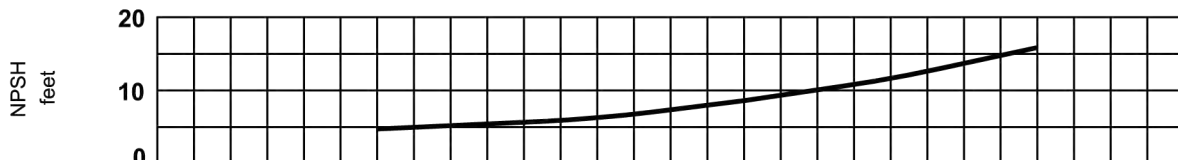
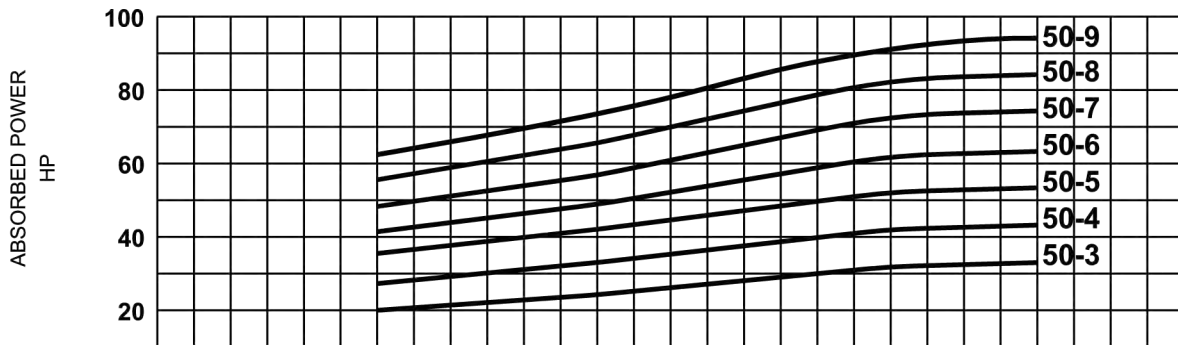
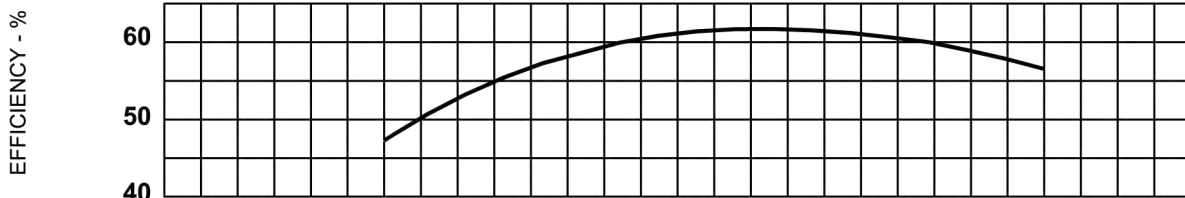
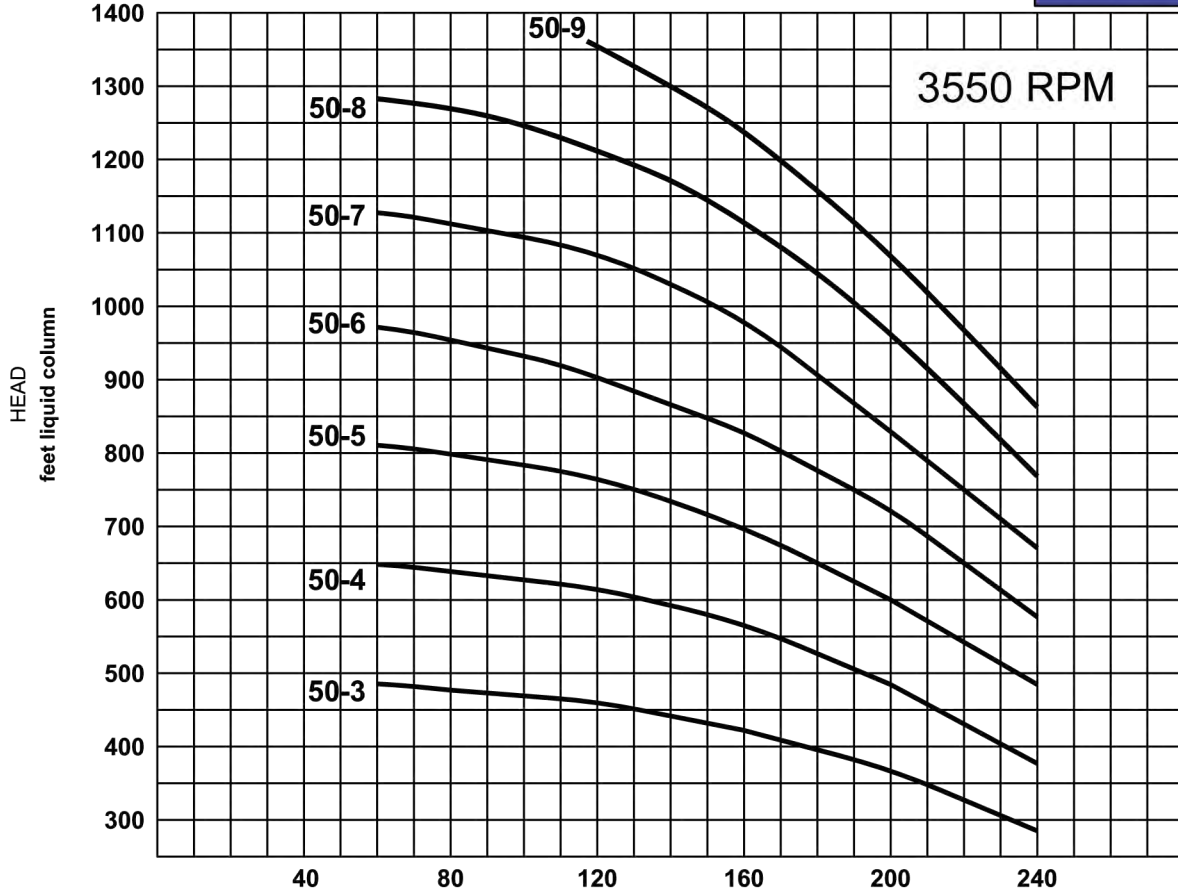
DATA BASED ON :
LIQUID TEMPERATURE 86 °F - 30 °C
SPECIFIC GRAVITY 1 Kg/dm³
VISCOSITY 32 SSU - 1 °E

TOLERANCES

CAP. & HEAD : 5%
HP : 10%

MATERIALS

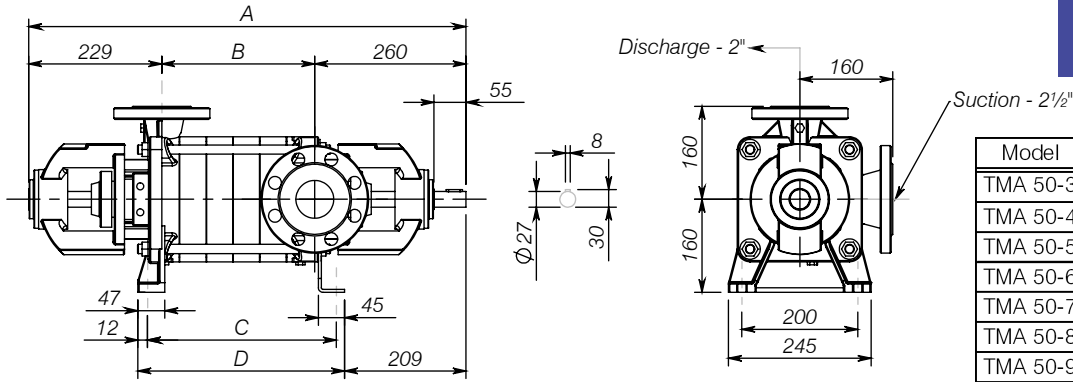
STANDARD



USGPM
CAPACITY

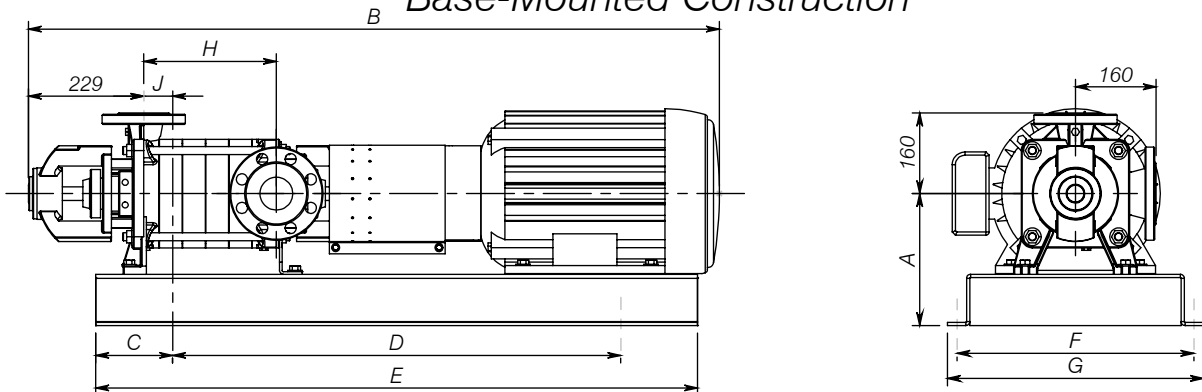
SERIES TMA 50

Bareshaft Construction



Model	A	B	C	D	Weight
TMA 50-3	660	171	231	263	54
TMA 50-4	706	217	277	309	62
TMA 50-5	752	263	323	355	70
TMA 50-6	798	309	369	401	78
TMA 50-7	844	355	415	447	86
TMA 50-8	890	401	461	493	94
TMA 50-9	936	447	507	539	102

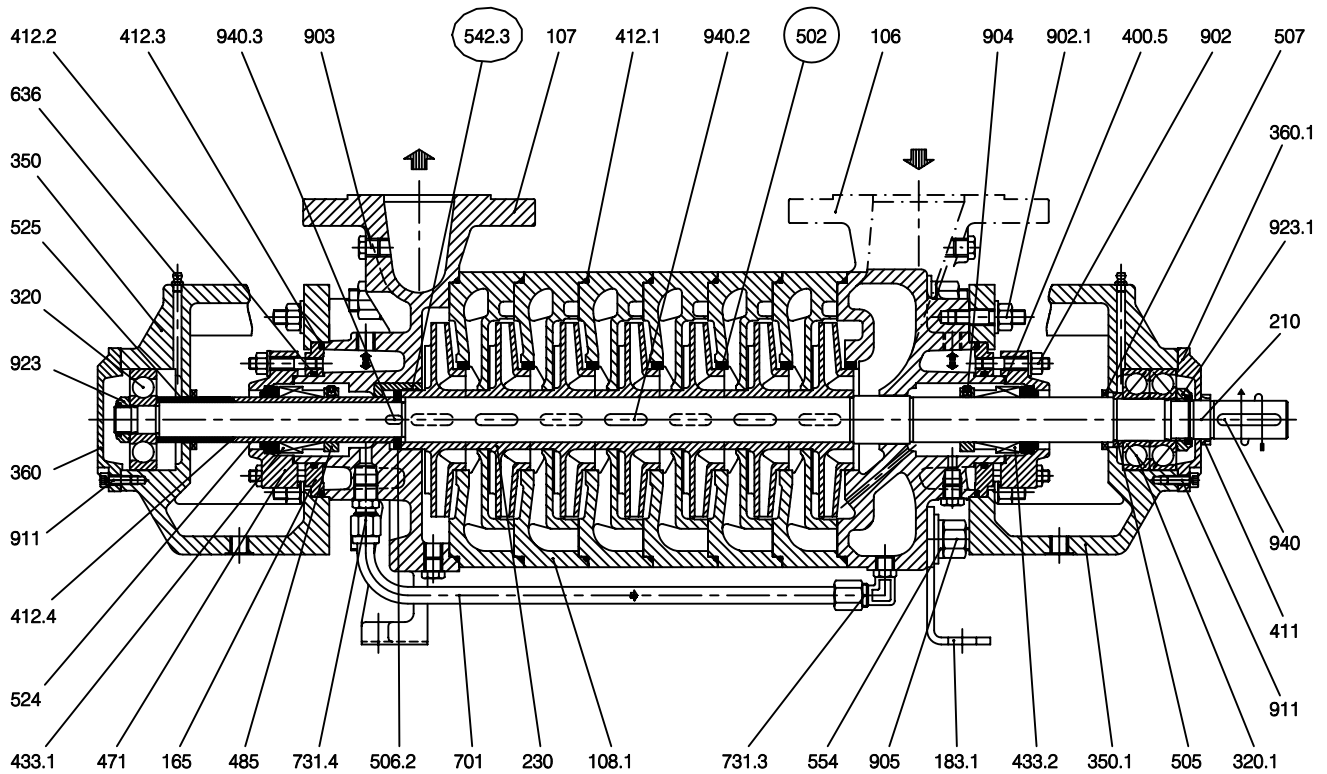
Base-Mounted Construction



PUMP MODEL	MOTOR FRAME	A	B	C	D	E	F	G	H	J	BASE PLATE	WEIGHT (Kg.)
TMA 50-3	182T	222	1054	178	610	965	318	356	171	-25	900	132
	184T		1080							-13		141
	284TS	279	1276	152	889	1194	470	508		0	907	293
	286TS		1318							-25		318
TMA 50-4	184T	222	1127	178	610	965	318	356	217	25	900	150
	213T		1191							76		177
	286TS	279	1362	152	889	1194	470	508		0	907	327
	324TS		1388							51		395
TMA 50-5	184T	222	1172	178	610	965	318	356	263	64	900	156
	213T		1235							203		762
	324TS	305	1435	152	889	1194	470	508		44	907	404
	326TS		1480							83		431
	364TS	330	1575	965	1270	54	909	531				
TMA 50-6	213T	248	1283	203	762	1168	394	432	309	0	903	213
	215T		1321							38		222
	364TS	330	1623		1118	1524	559	610		0	912	490
	365TS		1654							531		
TMA 50-7	213T	248	1327	203	762	1168	394	432	355	51	903	218
	215T		1365							76		231
	364TS	330	1667		1118	1524	559	610		0	912	540
	365TS		1699							581		
TMA 50-8	215T	248	1413	229	762	1168	394	432	401	114	903	236
	254T	260	1470							940		1397
	364TS	330	1715	203	1118	1524	559	610		25	912	544
	365TS		1743							590		
	405TS	356	1838	102	703							
TMA 50-9	365TS	330	1758	203	1118	1524	559	610	447	0	912	596
	405TS	356	1912									709

Flanges are R.F. drilled for 300 lbs. ANSI mating flanges
Dimensions in mm

Sectional Drawing with Mechanical Seal



○ Only for stainless steel construction

Part Number	Description	Part Number	Description	Part Number	Description
106	Suction casing	➤ 412.2	O-Ring	636	Grease cup
107	Discharge casing	➤ 412.3	O-Ring	701	Circulation pipe
108.1	Stage casing	➤ 412.4	O-Ring	731.3	Fitting
165	Cooling cover	➤ 433.1	Mechanical seal	731.4	Fitting
183	Support foot	➤ 433.2	Mechanical seal	902	Stud
➤ 210	Shaft	471	Mechanical seal cover	902.1	Stud
➤ 230	Impeller	485	Locking ring	903	Plug
➤ 320	Ball bearing	502	Wear ring	904	Grub screw
➤ 320.1	Ball bearing	505	Shoulder ring	905	Tie-bolt
350	Bearing housing	506.2	Locking ring	911	Filling Plug
350.1	Bearing housing	507	Thrower	923	Bearing nut
360	Bearing cover	524	Shaft sleeve	923.1	Bearing nut
360.1	Bearing cover	525	Spacer sleeve	940	Key
➤ 400.5	Gasket	542.3	Seal bush (A3 only)	940.2	Key
➤ 411	V-Ring	554	Washer	940.3	Key
➤ 412.1	O-Ring				

➤ = Recommended spare parts