



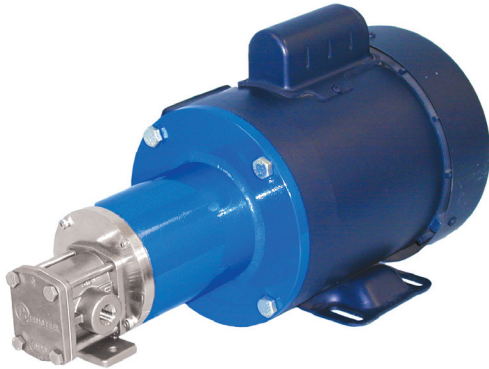
OBERDORFER PUMPS

by Gardner Denver

CHEMSTEEL™

RM102 Metallic

SEAL-LESS MAGNETIC DRIVE



A full range of accessories are available including:

- line mounted pressure relief valves
- pump mounting foot for use with footless motors
- pedestal assembly

GENERAL DESCRIPTION:

Chemsteel pumps are designed to handle highly corrosive liquids that must be pumped under pressure. Manufactured to extremely precise tolerance, the Chemsteel pump line prevents system contamination while maintaining the purity and integrity of the liquid being pumped. Its rugged, three-section, oring sealed thru-bolt construction provides ease of servicing and parts replacement.

Additionally, Chemsteel pumps offer bi-directional operation for applications requiring reversing flow.

LIFE CYCLE/COST OF OWNERSHIP

Pump design and materials selection, together provide the longest life available from a gear pump.

Key attributes include:

- Gear & bearing combinations of metallic and nonmetallic wear surfaces.
- Slotted bearings to lubricate shaft and gear surfaces.
- Hydraulic porting to balance axial thrust and to reduce wear.
- Ample port sizing to reduce the likelihood of cavitation when inlet pressure is marginal.
- Effective housing seals with elastic memory prevent leakage of corrosives.

SPECIFIC SOLUTIONS

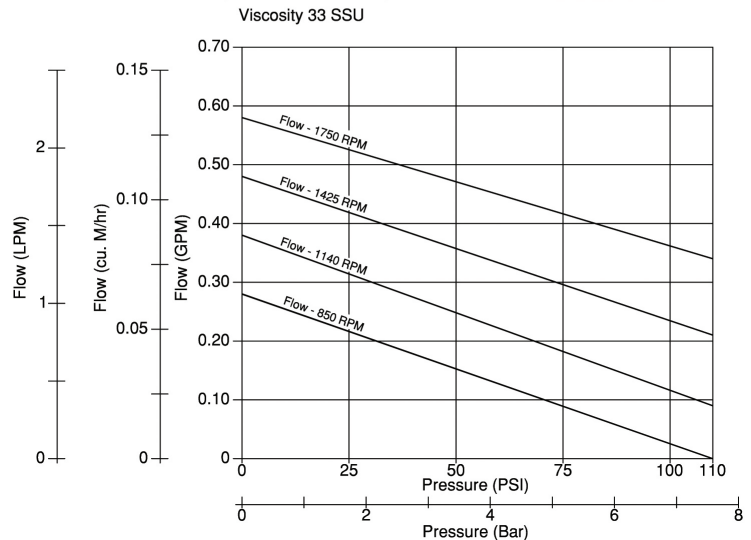
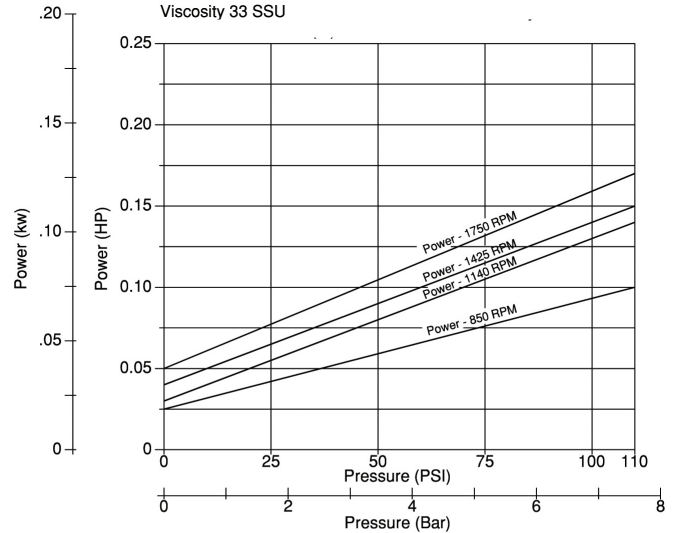
Gear/bearing design allows for “trimming” for optimizing the pump’s maximum flow to reach minimum turndown or to match flow to a specific OEM’s requirement.

Special materials combinations are available for specific liquids:

- Stainless or Alloy C housing construction.
- Gears available in 316 stainless, Alloy C. Also in PTFE White and Polyetheretherketone
- Shafts are 316 stainless steel or Alloy C.
- Bearings available in carbon or PTFE White or PTFE Red.

PERFORMANCE:

CAPACITY WATER AT 70° F / 21.2° C



Notes: For continuous service:

Plastic / Plastic gear combinations are limited to 50 psi or 3.5 bar.

Metal / Plastic gear combinations are limited to 100 psi or 7 bar.

Full range of seal options including lip seal, packing and mechanical designs.

MODEL	RM102	
Maximum flow @1750 rpm	0.6 GPM	2.7 LPM
Theoretical displacement	1.9 cc/revolution	
Maximum differential pressure	110 psig	7.6 bar
Maximum system pressure	300 psig	20.7 bar
Maximum speed	1800 RPM	
Maximum fluid temperature	450° F	232° C
Minimum fluid temperature	-50° F	-46° C
NPSHR @ 1750 RPM	2 feet	0.6 meters
Standard port size	1/4" FNPT	1/4" BSPT
Weight (lbs)	13 lbs	5.9 kg

