

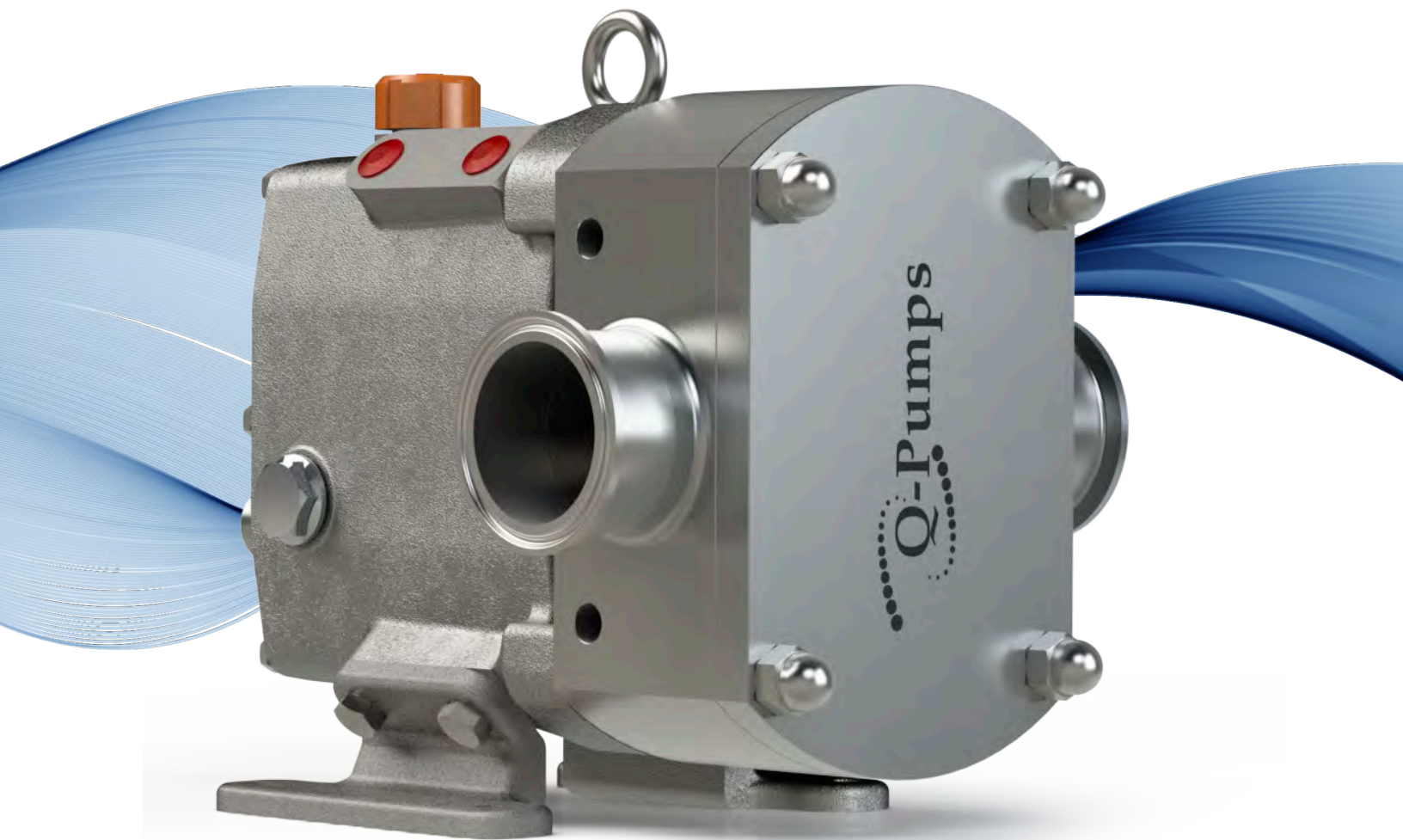
CALL TOLL FREE 877-742-2878 FOR SALES AND SUPPORT

Return to [BurtProcess.com](http://BurtProcess.com)

# QL SERIES

HIGH PERFORMANCE ROTARY LOBE PUMPS

 Q-Pumps



[en.q-pumps.com](http://en.q-pumps.com)

+52 (442) 103 31 00



# QL SERIES



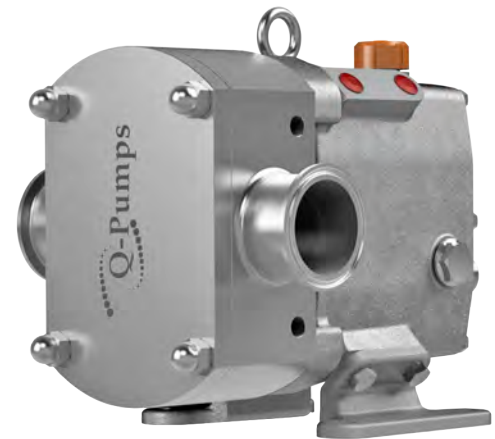
Economic rotary lobe pumps developed for viscous products and hygienic requirements. 3A certified and designed to meet EHEDG standards, ideal to work in the food, cosmetic and pharmaceutical industries.



**Q** 441 GPM / 1,670 LPM    **μ** up to 1,000,000 cP    **P** 290 psi / 20 bar | 670 ft / 204 m    **T** 150 °C / 302 °F

## CHARACTERISTICS

Ease of maintenance, economic price and CIP performance are key features of the QL positive displacement pump. Its front loading seal is ideal for easy and fast maintenance. There is no need to remove piping to get access to the seals, just cover and rotors.



Different rotor type options to meet the customer's product handling requirements.



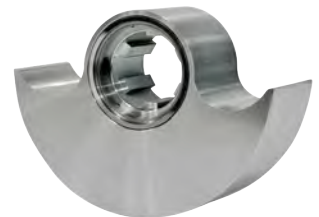
**Bi-Wing Rotor:**  
Standard



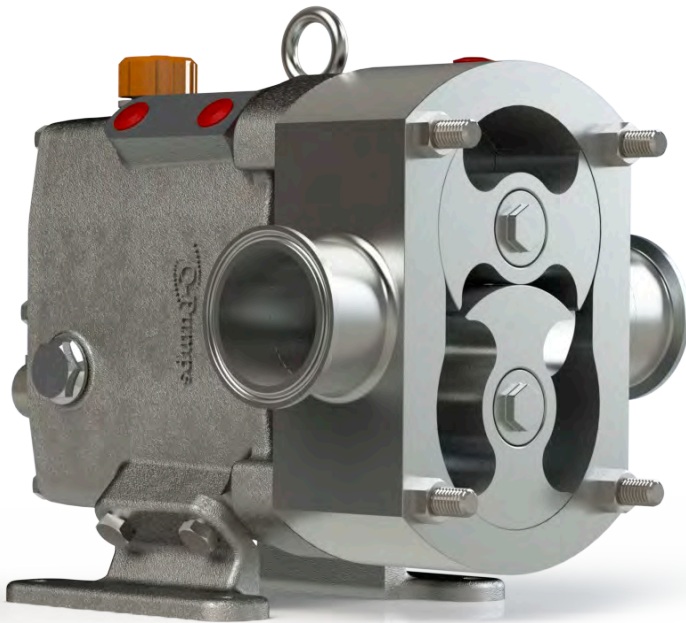
**Tri-Lobe Rotor**



**Multilobe Rotor**



**Single-Wing Rotor**



## CHARACTERISTICS

- 3-A Certified and designed to comply with EHEDG standards
- Bearing housing in 304 stainless steel.
- Wet parts in Stainless Steel 316L.
- Tri-Clamp connections as standard. Other sanitary and industrial ports available.
- 32  $\mu\text{m}$  (.8  $\mu\text{m}$ ) Ra maximum surface finish
- Optional electropolished finish in wet parts
- Standard mechanical seal in tungsten carbide against tungsten carbide

## ADVANTAGES

- Its front access provides quick cleaning and less downtime
- Four different types of seals for each application
- Heating jacket in front cover and casing for better temperature control
- Hardening options available for abrasive products

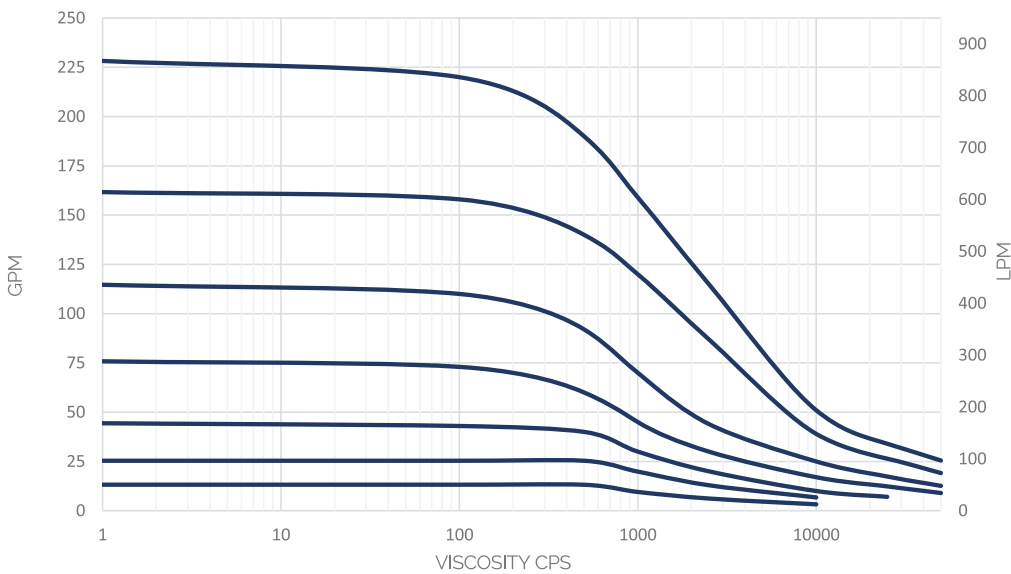


# QL SERIES

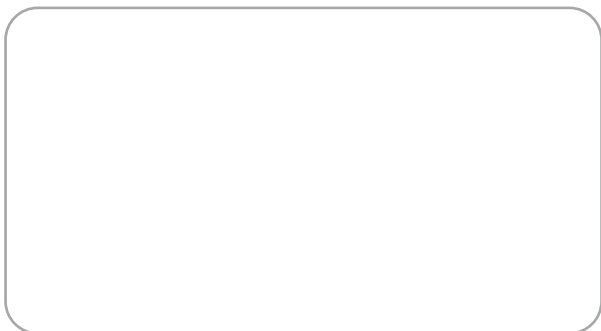
HIGH PERFORMANCE ROTARY LOBE PUMPS

QL Series	Model	Displacement			Standard Connection Size		Maximum Differential Pressure		Maximum Speed
		Liters / per rev.	lpm	gpm	DN mm	in	bar	psi	rpm
QL-A	QL-A10	0.050	50.0	13.2	25	1.0	20	290	1000
	QL-A15	0.120	96.0	25.4	40	1.5	12.1	175	800
	QL-A20	0.210	168.0	44.4	50	2.0	7.9	115	800
QL-B	QL-B20	0.410	287.0	75.8	50	2.0	12.1	175	700
	QL-B25	0.620	434.0	114.7	65	2.5	7.9	115	700
QL-C	QL-C30	1.020	612.0	161.7	80	3.0	12.1	175	600
	QL-C40	1.440	864.0	228.3	100	4.0	7.9	115	600

QL Reference Performance Curve



Distributed by:



For more information visit [www.qpumps.com](http://www.qpumps.com)  
or call us in +52 (442) 103 31 00