



**Griffco Valve Inc.**  
 188 Creekside Dr  
 Amherst, NY 14228 USA  
 Phone: +1 716 835-0891  
 Fax: +1 716 835-0893

## BPMP-SERIES BACK PRESSURE VALVES

### Features:

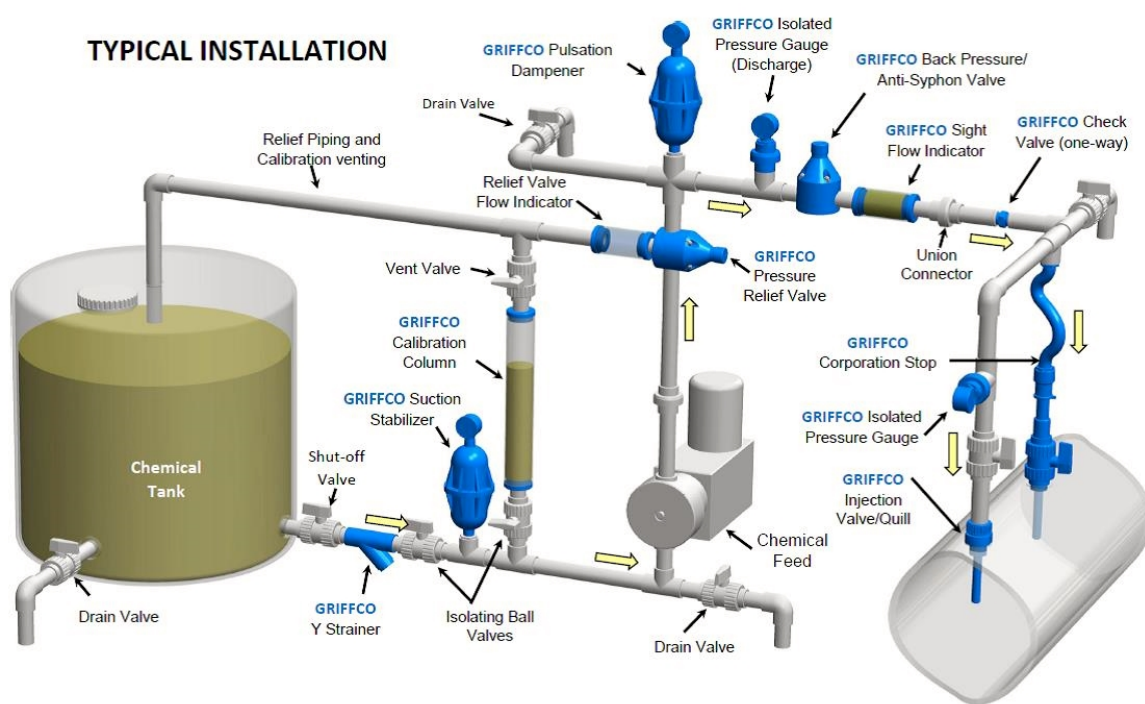
- 100 – 800 psi Pressure Range
- High Reliability/Low Cost
- Multiple Diaphragm Options
- Adjustable Pressure Range
- Anti-Siphon Function
- Robust, Machined Construction
- Tamper Resistant Adjustment Screw
- Wide Range of Materials

### Operation:

**Griffco** diaphragm back pressure valves apply positive discharge pressure to a metering pump system to prevent siphoning and eliminate varying dosage rates caused by fluctuating downstream pressure. The diaphragm is held against the valve seat by an internal spring. When the pre-set pressure is exceeded, the diaphragm is forced up and chemical flows through the valve to the injection point. The valves are pre-set for 250 psi, however they are field adjustable from 100 - 800 psi via the adjustment screw. Installation should be as close to the injection point as possible to prevent chemical line drainage, and it is most important that all chemical system equipment such as pulsation dampeners and pressure gauges be rated to the maximum pressure set by the valve, and located between the pump and the back pressure valve. A pressure relief valve is required.



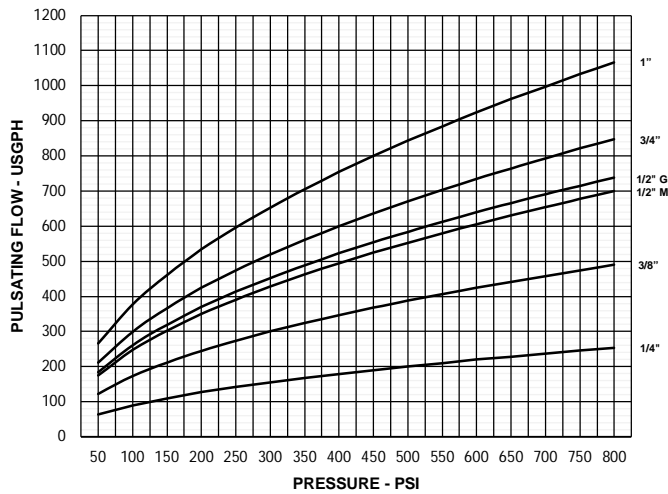
**Griffco BPMP-Series** diaphragm back pressure valves are designed to enhance the performance of chemical feed systems by applying a continuous back pressure to the chemical feed pump, while also acting as an anti-syphon valve. Robust construction ensures reliability in the rigorous service of municipal and industrial applications. Wetted materials include: **316 SS, A20, Hast. C, and Titanium.** Available sizes: ¼" – 1".



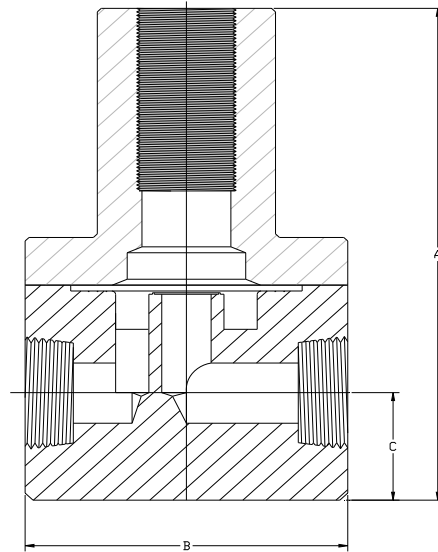
## Technical Data:

|   |                  |                   |   |    |
|---|------------------|-------------------|---|----|
| <b>Model BPMP Sizes</b>                         |                  |                   | 1/4", 3/8", 1/2", 3/4", 1"  |    |
| <b>Connections:</b>                             |                  |                   | NPT, BSPT, Socket, Flange (flanges not available on 1/4" and 3/8" valves) |    |
| <b>Pressure Adjustment</b>                      |                  |                   | 100 – 800 psi.  |    |
| <b>Flow Rates @ 800 psi</b>                     |                  |                   | <b>Shipping Weight: lbs</b>   |    |
| <b>Size</b>                                     | <b>Pulsating</b> | <b>Continuous</b> | <b>Metal / Metal Top</b>  |    |
| 1/4"  | 250 USgph        | 13 USgpm          | 1/4"  | 3  |
| 3/8"  | 490 USgph        | 25 USgpm          | 3/8"  | 3  |
| 1/2" M-Series                                   | 700 USgph        | 36 USgpm          | 1/2" M-Series   | 4  |
| 1/2" G-Series                                   | 740 USgph        | 38 USgpm          | 1/2" G-Series   | 10 |
| 3/4"  | 850 USgph        | 44 USgpm          | 3/4"  | 10 |
| 1"  | 1060 USgph       | 56 USgpm          | 1"  | 11 |
| <b>Max Operating Temperature: (°F)</b>          |                  |                   | 300°, (Peak 390°)   |    |
| <b>Max Operating Pressure (psi) @ 70 Deg. F</b> |                  |                   | 2000 psi  |    |
| <b>Materials of Construction:</b>               |                  |                   |   |    |
| <b>Diaphragm &amp; Seal</b>                     |                  |                   | PTFE / EPDM, Optional: Viton®, Hypalon®, PTFE & PTFE / Viton®             |    |
| <b>Valve Top</b>                                |                  |                   | 316 SS  |    |
| <b>Valve Body</b>                               |                  |                   | 316 SS, A 20, Hast. C, Titanium   |    |

## Performance Curves:



## Dimensions:



## Product Codes For Ordering Back Pressure Valves:

BPMP        
 1      2      3      4

**1 = Size**    **2 = Material**    **3 = Spring Opt**    **4 = Options**  
 M025 - 1/4"    S - 316 SS    Blank - 100-800 psi    Blank - NPT Threaded  
 M038 - 3/8"    A - Alloy 20    V - Viton® Diaphragm  
 M050 - 1/2"    C - Hast C    TV - PTFE/Viton Diaph.  
 G050 - 1/2"    T - Titanium    S - Socket Connection  
 G075 - 3/4"    F - Flange Connection  
 G100 - 1"    B - BSPT  
 90 - 90° Configuration

| DIMENSIONS: BPMP / PRMP - Series |         |         |         |
|----------------------------------|---------|---------|---------|
| All Materials                    |         |         |         |
| Size                             | A (in.) | B (in.) | C (in.) |
| 1/4"                             | 4.000   | 2.350   | 0.750   |
| 3/8"                             | 4.000   | 2.350   | 0.750   |
| 1/2" M Series                    | 4.709   | 2.350   | 1.080   |
| 1/2" G Series                    | 6.325   | 3.500   | 1.125   |
| 3/4"                             | 6.325   | 3.500   | 1.125   |
| 1"                               | 6.625   | 3.500   | 1.250   |

**Example: 3/4" A20, Viton Diaphragm – BPMPG075AV**