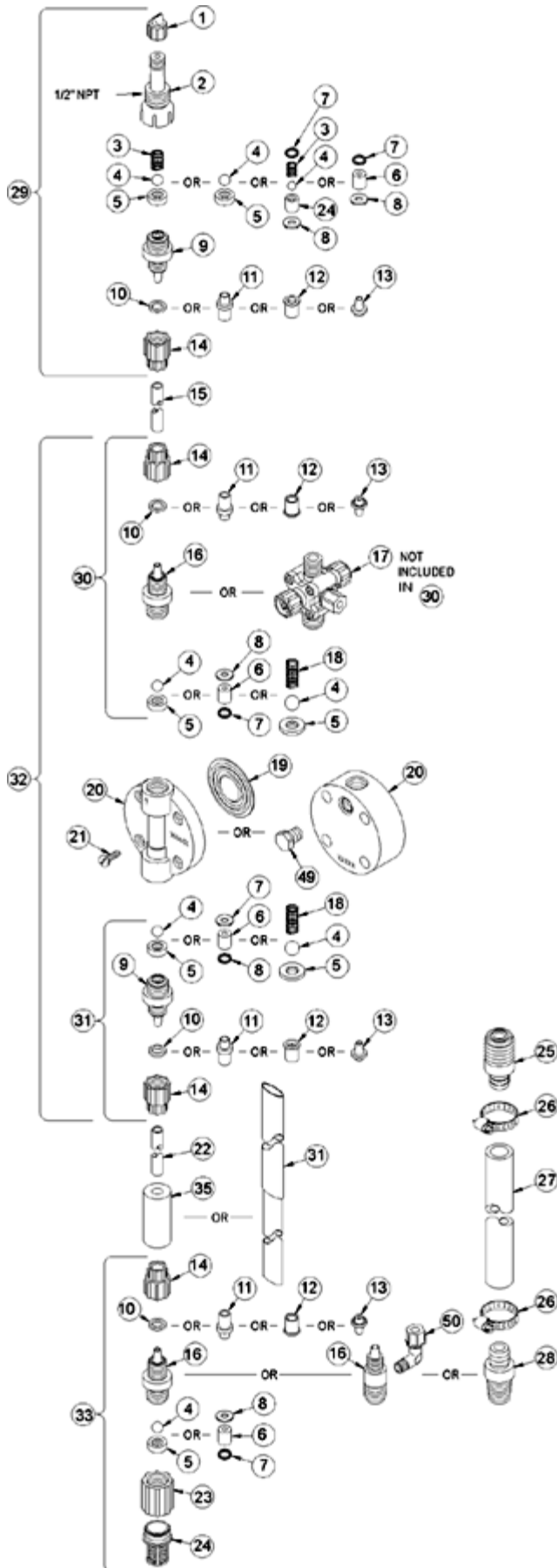
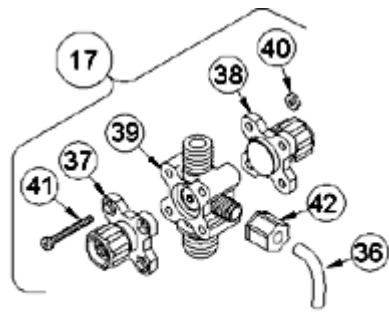


For more information, please call 877-742-2878 or visit www.burtprocess.com

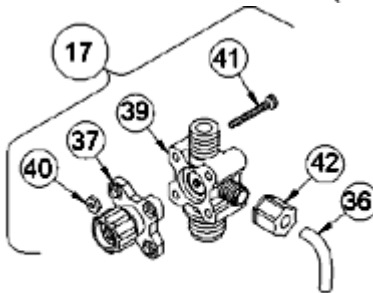
LE-490TM



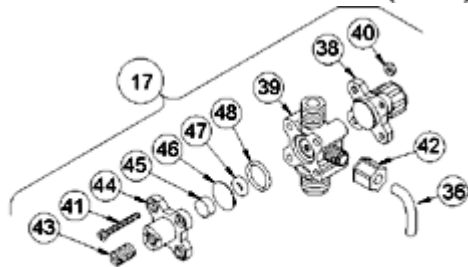
Key #	Part #	Description	Qty
1	27352	FLAPPER VALVE ,SANTOPRENE	1
2	37351	FITTING, LIQUIPRO, PVDF	1
3	37341	SPRING, COMPRESSION	1
4	10338	BALL, .375 CERAMIC	1
6	36307	CARTRIDGE ASM, .375 PVDF/POLYPREL	3
7	36103	O-RING,POLYPREL	4
8	36107	WASHER, CARTRIDGE VALVE	4
12	34461	SLEEVE, METRIC 5X8mm/6X8mm	4
14	30860	COUPLING NUT, METRIC	4
16	37765	FITTING,3/8 TUBING PVC	3
17	38056	VALVE ASM, 3FV 6X8mm PVC	1
19	30917	LIQUIFRAM, 0.9 FLUOROFILM	0
20	36157	HEAD, MACHINED 0.9 ACRYLIC	1
21	10340	SCREW, 10-24 X .75 PH SS	4
23	36204	COUPLING, FOOT VALVE PP	1
24	10123	STRAINER, FOOT VALVE PP	1
29	38030	VALVE ASM, INJ 6X8mm,PVC	1
31	38024	VALVE ASM, SUC 6X8mm,PVC POLYREL	1
33	38037	VALVE ASM, FOOT 6X8mm,PVC/POLYPREL	1
34	37340	SEAT, PTFE	1
35	10322	WEIGHT, SUCTION TUBING	1
36	25636-10	TUBING, .250 X .062 PE	1
37	36260	CAP ASM, RELIEF	1
39	38058	VALVE BODY,3FV 3/8 PVC	1
40	25628	NUT, 6-32 HEX SS	4
41	35716	SCREW, 6-32 X 1.19 PH SS	4
42	25631	NUT, RELIEF TUBING	1



4-FUNCTION VALVE (4FV)



3-FUNCTION VALVE (3FV)



4-FUNCTION BLEED VALVE (B-4FV)

[Return to selection page](#)