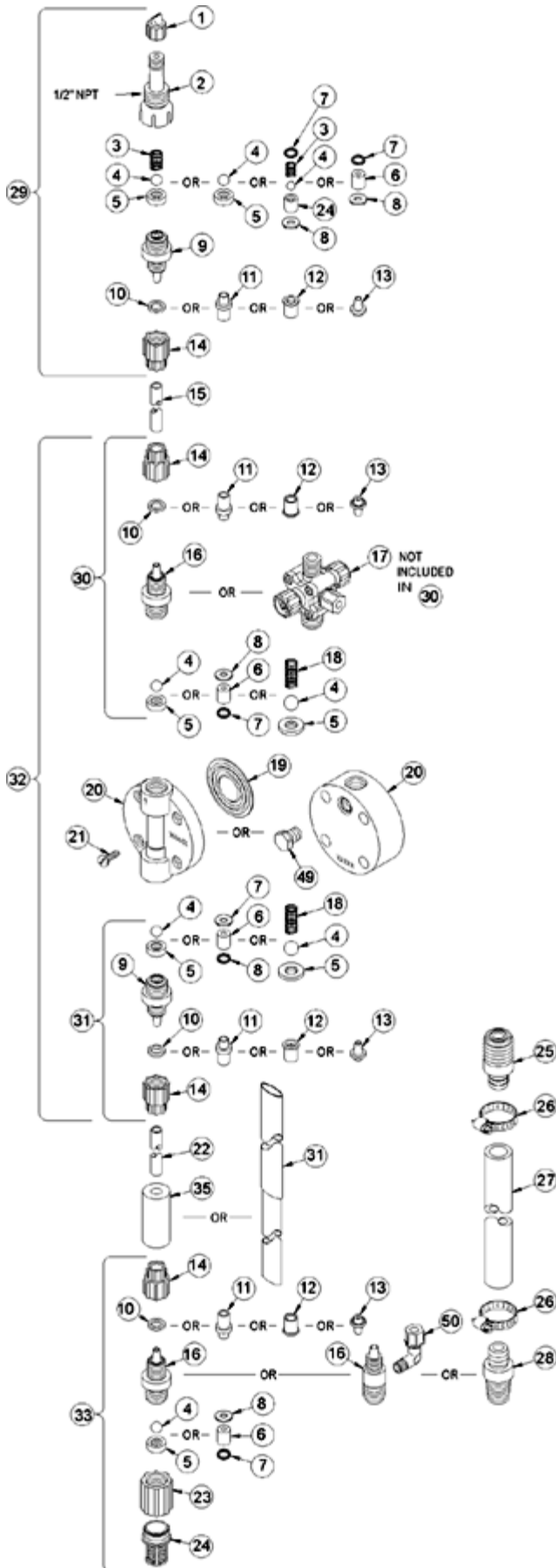
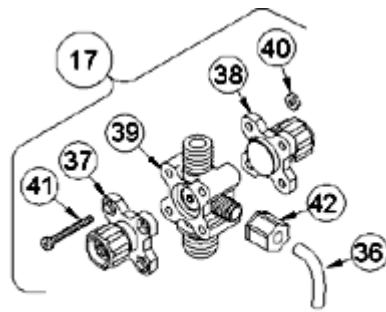


For more information, please call 877-742-2878 or visit www.burtprocess.com

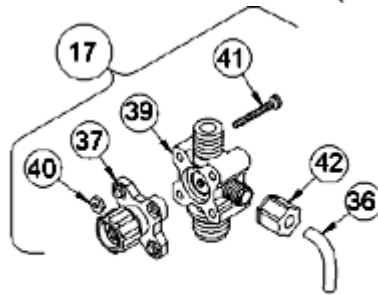
LE-393TI



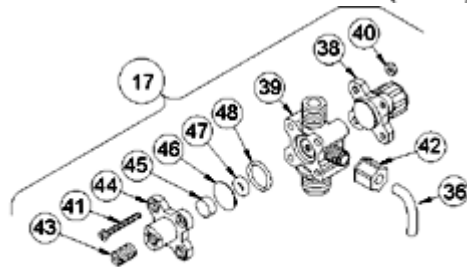
| Key # | Part # | Description | Qty |
|-------|--------|-----------------------------------|-----|
| 1 | 27352 | FLAPPER VALVE ,SANTOPRENE | 1 |
| 2 | 37351 | FITTING, LIQUIPRO, PVDF | 1 |
| 3 | 37341 | SPRING, COMPRESSION | 1 |
| 4 | 10338 | BALL, .375 CERAMIC | 1 |
| 6 | 36306 | CARTRIDGE ASM, .375 PVDF/TEFLON | 3 |
| 7 | 36103 | O-RING,POLYPREL | 4 |
| 8 | 36107 | WASHER, CARTRIDGE VALVE | 4 |
| 10 | 26136 | CLAMP RING, 3/8 OD TUBING | 3 |
| 14 | 10299 | COUPLING NUT, PP 3/8 | 4 |
| 16 | 37115 | FITTING,3/8 TUBING PVDF | 3 |
| 17 | 36266 | VALVE ASM, 3FV 3/8' PVDF | 1 |
| 19 | 30917 | LIQUIFRAM, 0.9 FLUOROFILM | 0 |
| 20 | 38377 | HEAD KIT 0.9 MOLDED PVDF W/WASHER | 1 |
| 21 | 10340 | SCREW, 10-24 X .75 PH SS | 4 |
| 23 | 36204 | COUPLING, FOOT VALVE PP | 1 |
| 24 | 10123 | STRAINER, FOOT VALVE PP | 1 |
| 29 | 37356 | VALVE ASM, INJ 3/8' PVDF | 1 |
| 31 | 36354 | VALVE ASM, SUC 3/8' PVDF,PTFE | 1 |
| 33 | 36352 | VALVE ASM, FOOT 3/8',PVDF PTFE | 1 |
| 34 | 37340 | SEAT, PTFE | 1 |
| 35 | 10322 | WEIGHT, SUCTION TUBING | 1 |
| 37 | 36260 | CAP ASM, RELIEF | 1 |
| 39 | 37227 | VALVE BODY,4FV/BLEED 3/8 PVDF | 1 |
| 40 | 25628 | NUT, 6-32 HEX SS | 4 |
| 41 | 35716 | SCREW, 6-32 X 1.19 PH SS | 4 |
| 42 | 25631 | NUT, RELIEF TUBING | 1 |



4-FUNCTION VALVE (4FV)



3-FUNCTION VALVE (3FV)



4-FUNCTION BLEED VALVE (B-4FV)

[Return to selection page](#)