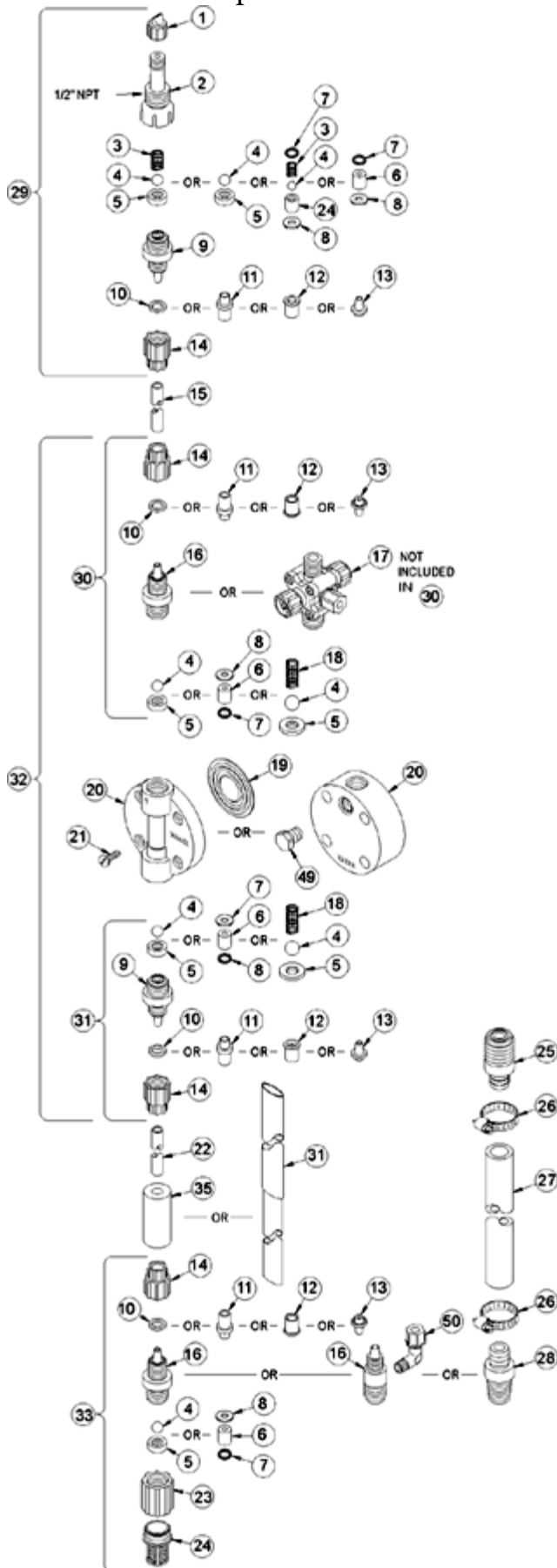
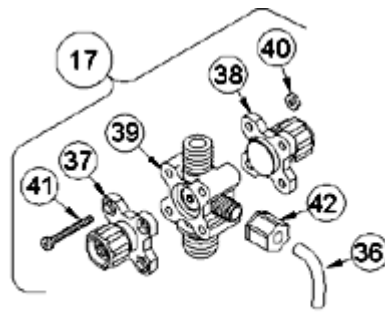


For more information, please call 877-742-2878 or visit [www.burtprocess.com](http://www.burtprocess.com)

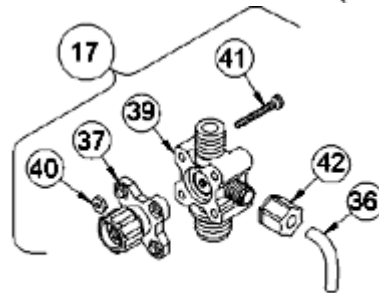
### LE-313TI



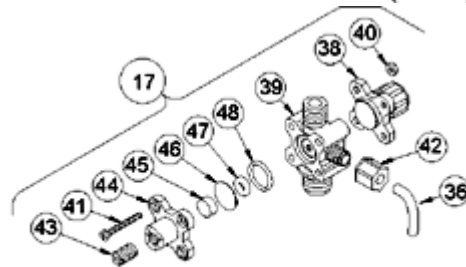
Key #	Part #	Description	Qty
1	27352	FLAPPER VALVE ,SANTOPRENE	1
2	37351	FITTING, LIQUIPRO, PVDF	1
3	37341	SPRING, COMPRESSION	1
4	10338	BALL, .375 CERAMIC	1
6	36306	CARTRIDGE ASM, .375 PVDF/TEFLON	3
7	36103	O-RING,POLYPREL	4
8	36107	WASHER, CARTRIDGE VALVE	4
10	37203	CLAMP RING, 1/2'	3
14	10411	COUPLING NUT, PP 1/2	3
16	37117	FITTING,1/2 TUBING PVDF	3
17	36267	VALVE ASM, 3FV 1/2,PVDF	1
19	31419	LIQUIFRAM, 3.0, FLUOROFILM	1
20	36128	HEAD, MOLDED 3.0 PVDF	1
21	10340	SCREW, 10-24 X .75 PH SS	4
23	36204	COUPLING, FOOT VALVE PP	1
24	10123	STRAINER, FOOT VALVE PP	1
29	37358	VALVE ASM, INJ 1/2' PVDF	1
31	36360	VALVE ASM, SUC 1/2' PVDF,PTFE	1
34	37340	SEAT, PTFE	1
35	10322	WEIGHT, SUCTION TUBING	1
36	25636-10	TUBING, .250 X .062 PE	1
37	36260	CAP ASM, RELIEF	1
39	37233	VALVE BODY,1/2 PVDF	1
40	25628	NUT, 6-32 HEX SS	4
41	35716	SCREW, 6-32 X 1.19 PH SS	4
42	25631	NUT, RELIEF TUBING	1



4-FUNCTION VALVE (4FV)



3-FUNCTION VALVE (3FV)



4-FUNCTION BLEED VALVE (B-4FV)

[Return to selection page](#)