



Ingersoll Rand



WHY OUR NEW PATENTED IMPACT WRENCH IS THE BEST CHOICE

POWERFUL

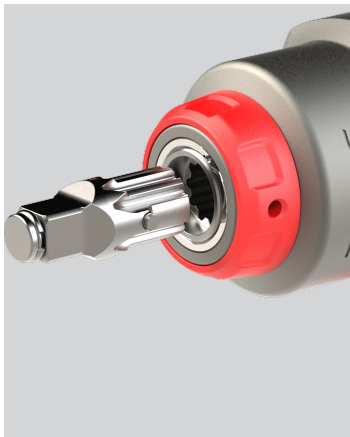
Industry's most compact high torque impact wrench delivering 1,500 ft-lbs of breakaway torque while weighing less than 4.4 lbs and in a length under 7.3"

VERSATILE

Interchangeable drives can quickly configure this tool for the job without losing power, increasing size or needing more tools

DURABLE

More legendary durability from an unyielding titanium hammer case and a patented direct hammer lubrication system



2236Q TiMAX IMPACT WRENCH

DXS  Drive Xchange System™

INTERCHANGEABLE GAME-CHANGER

Ingersoll Rand® 2236 MAX Series 1/2" Impact Wrench



irtools.com/DXS

Introducing the Ingersoll Rand® 2236 MAX Series.

Versatility meets power in the new Ingersoll Rand 1/2" pneumatic impact wrench. The patented* Drive Xchange System™ lets you switch out anvils without clunky adapters that drain your tool's power.



AVAILABLE CONFIGURATIONS



2236QTIMAX
Standard Friction Ring Anvil



2236QPTIMAX
Standard Pin Anvil



2236QTIMAX-2
2" Extended Friction Ring Anvil

Titanium Hammer Case
Lightweight with unyielding durability

Longer Life
Reliability from a patented direct greasing design

200 ft-lbs More Powerful
1,500 Ft-lbs of Nut busting Torque from a patented motor design**

More Versatility
Patented DXS Drive Xchange System™



Interchangeable anvils including:
3/8, 1/2, and 3/4 inch drive options and five lengths from 2 to 10 inches

Quieter
4 decibels quieter from a patented motor design***

More Compact
1/4" shorter length from a patented motor

Better Health and Ergonomics
Reduced fatigue from lower weight, better balance

AVAILABLE DRIVE SIZES

AK33H
3/8", 1/2", 3/4"



AK43H
3/4", 1/2 x 2", 1/2 x 4"



* Global Patents Pending
** Compared to IR 2235QTIMAX
*** Compared to IR 2235TIMAX

Model	Drive Size	Breakaway Torque ft-lbs (Nm)	Impact Per Minute (BPM)	MAX Free Speed (RPM)	Impacting Sound Level dB(A)	Weight lbs (kg)	Length in (mm)	Air Inlet (NPTF/NPT)	Min Hose Size in (mm)
2236QTIMAX	1/2" Standard Anvil	1500 (2034)	1350	7500	94.2	4.4 (1.99)	7.36 (187)	1/4"	3/8 (10)
2236QTIMAX-2	1/2 x 2" Extended Anvil	1500 (2034)	1350	7500	94.2	4.6 (2.1)	9.37 (238)	1/4"	3/8 (10)
2236QPTIMAX	1/2" Pin Anvil	1500 (2034)	1350	7500	94.2	4.4 (1.99)	7.36 (187)	1/4"	3/8 (10)

DRIVE KITS

AK32H 2-pc Kit Includes: 3/8", 1/2" Std
AK33H 3-pc Kit Includes: 3/8", 1/2" Std, 3/4" Std
AK42H 2-pc Kit Includes: 1/2 x 2" Ext, 3/4" Std
AK43H 3-pc Kit Includes: 1/2 x 2" Ext, 1/2 x 4" Ext, 3/4" Std

AK62H 2-pc Kit Includes: 1/2" Std, 3/4" Std
EAK62H 2-pc Kit Includes: 3/4" Std, 3/4 x 6" Ext
EAK44H 4-pc Kit Includes: 1/2 x 4", 6", 8", 10" Ext



Ingersoll Rand (NYSE:IR), driven by an entrepreneurial spirit and ownership mindset, is dedicated to helping make life better for our employees, customers and communities. Customers lean on us for our technology-driven excellence in mission-critical flow creation and industrial solutions across 40+ respected brands where our products and services excel in the most complex and harsh conditions. Our employees develop customers for life through their daily commitment to expertise, productivity and efficiency.

Learn more at www.ingersollrand.com

