



Griffco Valve Inc.

188 Creekside Dr
Amherst, NY 14228 USA
Phone: +1 716 835-0891
Fax: +1 716 835-0893

PRMP-SERIES PRESSURE RELIEF VALVES



Griffco PRMP-Series diaphragm pressure relief valves are designed to protect chemical feed systems from over pressure damage caused by defective equipment or a blockage in the chemical feed line. Robust construction ensures reliability in the rigorous service of municipal and industrial applications. Wetted materials include: **316 SS, A20, Hast. C** and **Titanium**. Available sizes: 1/4" – 1".

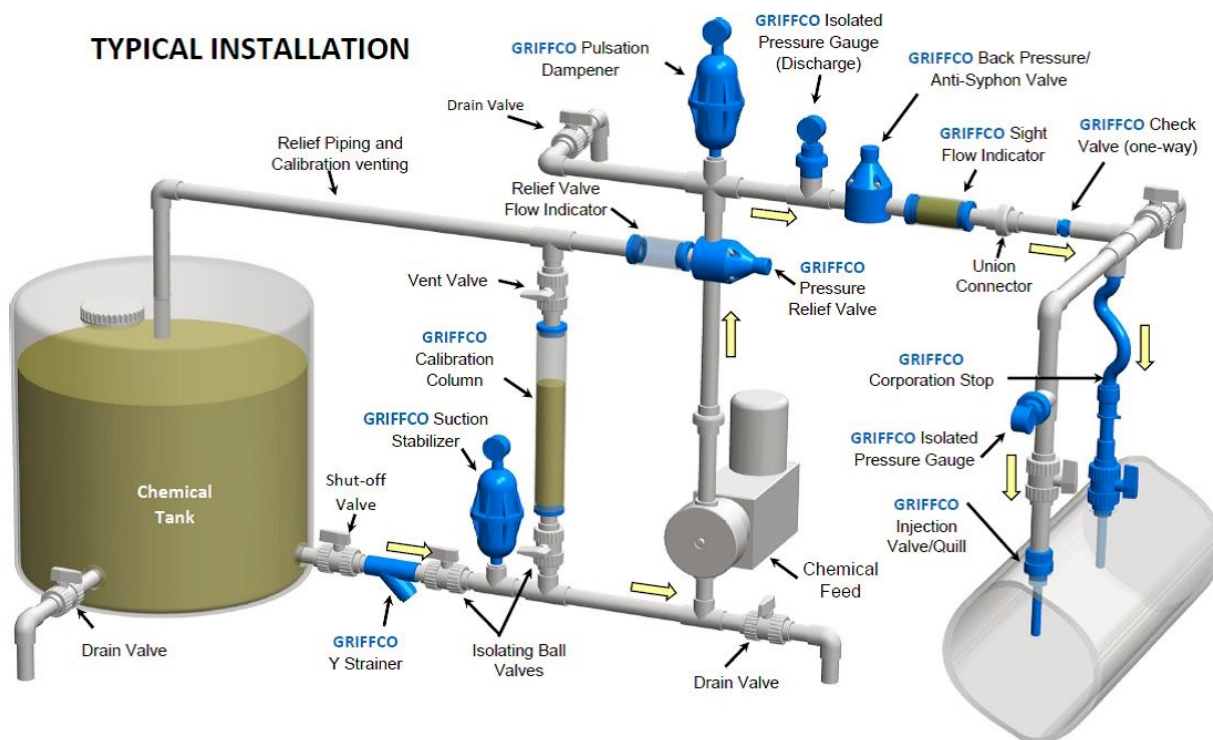
Features:

- 100 – 800 psi Pressure Range
- High Reliability/Low Cost
- Multiple Diaphragm Options
- Adjustable Pressure Range
- 2 and 3 Port Configurations
- Robust, Machined Construction
- Tamper Resistant Adjustment Screw
- Wide Range of Materials

Operation:

Griffco diaphragm pressure relief valves operate when the pressure in the chemical system exceeds the preset pressure of the valve. The diaphragm is held against the valve seat by an internal spring. When the pre-set pressure is exceeded the diaphragm is forced up and the chemical flows out the relief port, back to the chemical tank or to the suction side of the pump. The valves are pre-set at 250 psi, however they are field adjustable from 100 - 800 psi, via the adjustment screw. The relief valve should be set approximately 15 psi higher than the system pressure. Installation should be made as close to the pump as possible, without any valves or accessories between the relief valve and the pump. Consult your pump manufacturer for their recommendations.

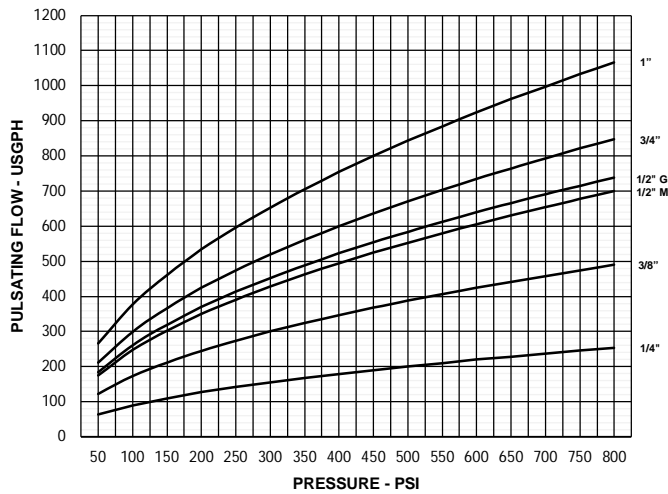
TYPICAL INSTALLATION



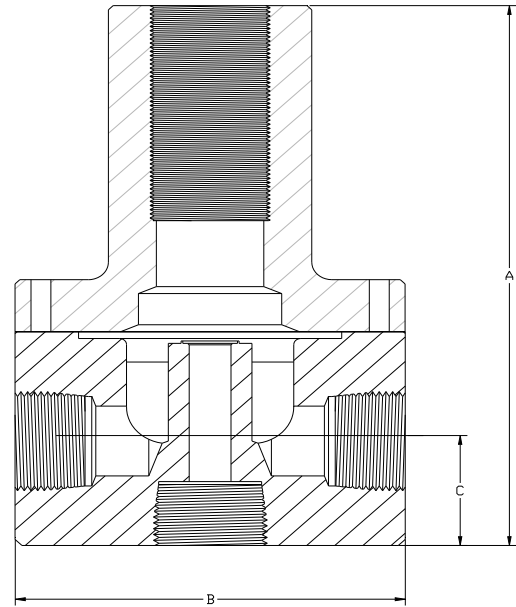
Technical Data:

Model PRMP Sizes		1/4", 3/8", 1/2", 3/4", 1"		
Connections:		NPT, BSPT, Socket, Flange (flanges not available on 1/4" and 3/8" valves)		
Pressure Adjustment		100 – 800 psi.		
Flow Rates @ 800 psi		Shipping Weight: lbs		
Size	Pulsating	Continuous	Metal / Metal Top	
1/4"	250 USgph	13 USgpm	1/4"	3
3/8"	490 USgph	25 USgpm	3/8"	3
1/2" M-Series	700 USgph	36 USgpm	1/2" M-Series	4
1/2" G-Series	740 USgph	38 USgpm	1/2" G-Series	10
3/4"	850 USgph	44 USgpm	3/4"	10
1"	1060 USgph	56 USgpm	1"	11
Max Operating Temperature: (°F)		300°, (Peak 390°)		
Max Operating Pressure (psi) @ 70 Deg. F		2000 psi		
Materials of Construction:				
Diaphragm & Seal		PTFE / EPDM, Optional: Viton®, Hypalon®, PTFE & PTFE / Viton®		
Valve Top		316 SS		
Valve Body		316 SS, A 20, Hast. C, Titanium		

Performance Curves:



Dimensions:



Product Codes For Ordering Pressure Relief Valves:

PRMP
 1 2 3 4

1 = Size **2 = Material** **3 = Spring Opt** **4 = Options**
 M025 - 1/4" S - 316 SS Blank - 100-800 psi Blank - NPT Threaded
 M038 - 3/8" A - Alloy 20 V - Viton® Diaphragm
 M050 - 1/2" C - Hast C TV - PTFE/Viton Diaph.
 G050 - 1/2" T - Titanium S - Socket Connection
 G075 - 3/4" F - Flange Connection
 G100 - 1" B - BSPT
 90 - 90° Configuration

Note: For Optional 2-Port pressure relief valve put "2" after PRMPM or PRMPG

DIMENSIONS: BPMP / PRMP - Series			
All Materials			
Size	A (in.)	B (in.)	C (in.)
1/4"	4.000	2.350	0.750
3/8"	4.000	2.350	0.750
1/2" M Series	4.709	2.350	1.080
1/2" G Series	6.325	3.500	1.125
3/4"	6.325	3.500	1.125
1"	6.625	3.500	1.250

Examples: 3/4" Valve, A20, Viton Diaphragm – PRMPG075AV; 3/8" Valve, 2-port, 316 SS: PRMPM2038S

Email: sales@griffcovalve.com

Website: www.griffcovalve.com