

flexaseal

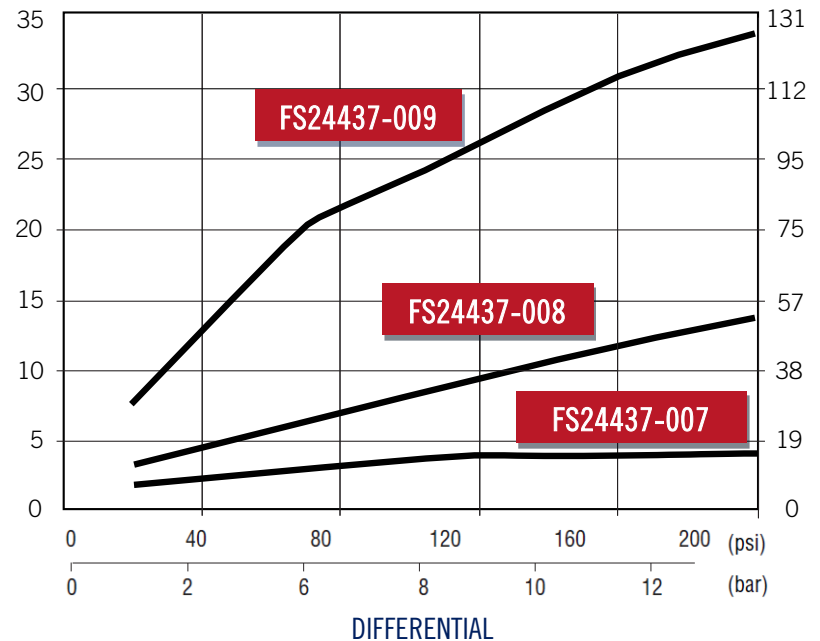
ENGINEERED SEALS AND SYSTEMS, LLC

CYCLONE SEPARATOR

When an external source of clean fluid is not available or economical to use for a seal flush plan, a Flexaseal Cyclone Separator may be the answer. Cyclone separators efficiently remove abrasive media from a pump's discharge, circulating the resulting clean fluid back into the seal chamber to cool the seal faces.

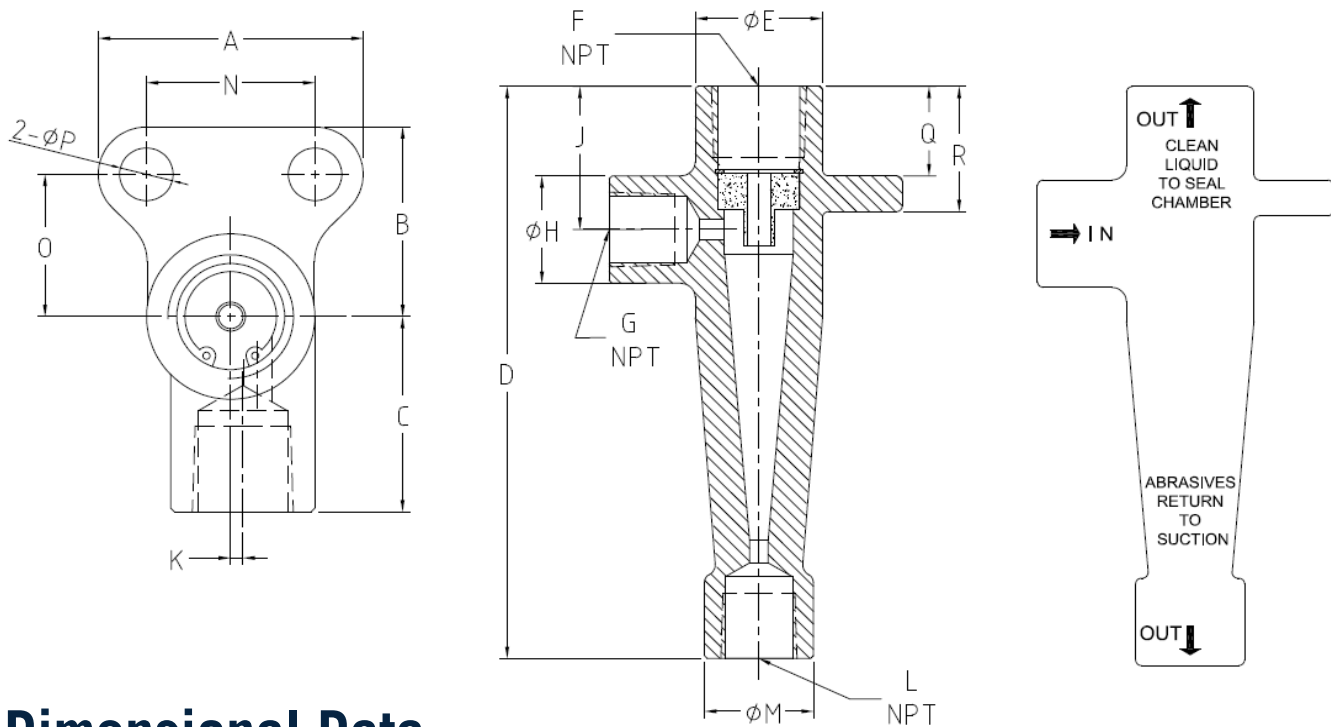
The simple construction of the Flexaseal Cyclone Separator utilizes a one-piece pressure casing, eliminating the temperature and pressure constraints imposed by bolted and gasketed casing cover designs.

When properly installed, the FAS Cyclone Separator provides lower pipe stress when inline mounted, improves circulation, and reduces temperature at the seal faces, all while offering operating pressures up to 3000 psi / 207 bar.

TOTAL CAPACITY
(GPM)TOTAL CAPACITY
(LPM)

How a cyclone separator operates is affected by many factors, and the following process should be used as a selection guideline.

1. Determine the maximum and minimum acceptable clean circulation flow rates using the seal manufacturer's information.
2. Establish the required total capacity of the cyclone separator using the following formula:
Clean Flow Rate x 1.4 = Total Capacity (GPM or LPM)
3. Calculate available differential pressure using the following formula:
Pump Discharge Pressure – Stuffing Box Pressure = Differential Pressure
4. On the chart above, locate the intersection of the lines corresponding to total capacity and differential pressure. Choose the cyclone separator model with a flow rate **greater** than the required minimum.



Dimensional Data

Consult factory for dimensional information on FS24437-006

	FS24437-007		FS24437-008		FS24437-009	
	INCH	MM	INCH	MM	INCH	MM
A	2.000	50.80	2.750	69.85	*	*
B	1.437	36.50	2.000	50.80	*	*
C	1.532	38.91	2.062	52.37	2.340	59.44
D	5.500	139.70	8.000	203.20	11.687	296.85
E	1.250	31.75	1.750	44.45	2.687	68.25
F (NPT)	0.500	12.70	1.000	25.40	1.500	38.10
G (NPT)	0.500	12.70	0.750	19.05	1.000	25.40
H	1.250	31.75	1.500	38.10	1.750	44.45
J	1.500	38.10	2.000	50.80	3.062	77.77
K	0.187	4.75	0.312	7.92	0.460	11.68
L (NPT)	0.500	12.70	0.750	19.05	1.000	25.40
M	1.250	31.75	1.500	38.10	1.750	44.45
N	1.250	31.75	1.750	44.45	*	*
O	1.062	26.97	1.500	38.10	*	*
P	0.437	11.10	0.562	14.27	*	*
Q	1.000	25.40	1.250	31.75	*	*
R	1.312	33.32	1.750	44.45	*	*

Materials of Construction

One-piece Casing

-006:

Nylon

-007, 008, 009

Stainless Steel

Duplex Stainless Steel

Super Duplex Stainless Steel

Monel®

Inserts

-007: Tungsten

-008: Stellite

-009: Stellite / Stainless Steel

Operating Pressures

-006

up to 650 psi (45 bar)

-007, 008, 009

up to 3000 psi (207 bar)