

An underwater photograph featuring a large sea turtle on the right side, swimming towards the left. The turtle's head is in the foreground, and its body extends into the background. To the left of the turtle is a large, dense school of small, silvery fish swimming in the same direction. The water is a clear, vibrant blue. The text 'HAYWARD | TRUE GRIT' is overlaid in white, bold, sans-serif font across the middle of the image. Below this, the words 'AQUATIC GUIDE' are written in a smaller, white, sans-serif font. A small registered trademark symbol (®) is visible after 'HAYWARD'.

HAYWARD | **TRUE GRIT**
AQUATIC GUIDE





SENSITIVE AQUATIC SYSTEMS REQUIRE TRUSTED SOLUTIONS WITH PROVEN PERFORMANCE AND SAFETY.

At Hayward Flow Control, we understand the magnitude and impact aquaculture has in our everyday life. Equally important? Safety, efficiency and reliability. There's no margin for error. **That's why we leave nothing to chance.**

Hayward® Flow Control has been a leading manufacturer of industrial thermoplastic valves and process control products for more than 60 years. In fact, Hayward was one of the originators of the first thermoplastic ball valves. Since then, we have remained committed to producing the highest quality products while providing outstanding service. All Hayward products are made in America under the most stringent standards to serve a global population.

From recirculating aquaculture systems to municipal waste and water systems, from data center piping systems to offshore water treatment – we've tackled some of the world's biggest and most complex flow control challenges with proven reliability.





RELIABLE BY DESIGN

Hayward Flow Control understands the sensitive nature of aquaculture systems, no matter the scale. Managing vital aquatic processes with control, efficiency and safety assures **optimal operation and return**. Reliability is where Hayward stands apart. All of our butterfly and ball valves are designed using the latest state-of-the-art equipment. Our Computer Aided Design (CAD) system, linked to finite element software, provides accurate and essential stress analysis. Hayward valves are designed to be strong, with material where it counts allowing years of service. It's why we're trusted in some of the most strenuous environments in the world: mining, power generation, oil and gas, and more.

WORLD CLASS QUALITY

As an ISO 9001:2015 certified company, Hayward Flow Control adheres to the strictest guidelines relative to component manufacture, assembly and testing. We employ the latest manufacturing technologies and continue to invest in new equipment and tooling. Our reputation for quality and reliability is unmatched. In addition to a tradition of quality and expertise, Hayward's highly qualified field sales organization also provides customer assistance, training and field support.

TRUSTED DELIVERY & RESULTS

Hayward specializes in large-scale flow control — and large-scale production. With US-based operations, we offer distribution on both coasts for what you need, when you need it, without waiting for an import.

LifeStar®

AQUATIC PUMPS

LIFESTAR® SERIES AQUATIC PUMPS - THE REAL DEAL

	LIFESTAR® AQUATIC PUMPS
TRUE AQUATIC PUMP	Ideal for Sensitive Aquatic Environments or Salt Water Systems
NO METAL LEACHING	All Wetted Hardware Made from 316 Stainless Steel
FRESH/SALTWATER SYSTEMS	Silicon Carbide Shaft Seals Suitable for Fresh and Salt Water Use
EASE OF USE	Clear Basket Strainer Lid for Visual Inspection + Self-Priming
CORROSION RESISTANCE	Corrosion Resistant GFPP Housing with Elevated Base to Protect from Flooding
MOTOR OPTIONS	Single, Variable and 6-Speed Motor Options for Greater Efficiency
WARRANTY	Backed by Hayward Flow Control's Global 3 Year Warranty

RUGGED, DURABLE HAYWARD FLOW CONTROL PRODUCTS ARE BUILT TO WORK IN THE TOUGHEST ENVIRONMENTS SERVING THE MOST CRITICAL AQUATIC NEEDS – INCLUDING YOURS.



LifeStar® A Series

Single or Variable Speed Aquatic Pump

1/2 HP Single Phase, Single Speed ODP

1/2, 3/4, 1, 1-1/2, 2, 3 HP 3-Phase, Single Speed TEFC

2 HP Single Phase, Variable Speed TEFC



KEY FEATURES

- Ideal for Sensitive Aquatic Environments or Salt Water Systems
- All Wetted Hardware Manufactured from 316 Stainless Steel
- Silicon Carbide Shaft Seal Suitable for Fresh and Salt Water Use
- Corrosion Resistant Housing
- Self-Priming Pump
- Suitable For High Volume Pumping
- Clear High Capacity Basket Strainer Lid for Visual Inspection
- Elevated Base Ensures Better Ventilation and Protection from Flooding
- Perforated HDPE Basket

VARIABLE SPEED

LIFESTAR® A-SERIES & MV

- Option Available with LifeStar® A-Series and Lifestar® MV Series Medium Head Aquatic Pumps
- Multi-Position or Detachable Remote Mount Digital Control Interface
- Fully Programmable with up to 8 User Preset Functions



LifeStar® XE

High Efficiency Aquatic Pump

6 Speed 1225 - 3450 rpm 1.85 & 2.25 HP

Single Phase 115V/230V, ODP



KEY FEATURES

- Ideal for Sensitive Aquatic Environments or Salt Water Systems
- Programmable over 6 Selectable Speeds
- All Wetted Hardware Manufactured from 316 Stainless Steel
- Silicon Carbide/Silicon Carbide Shaft Seal Suitable for Fresh and Salt Water Use
- Corrosion Resistant GFPP Pump Housing
- Self-Priming Pump
- Clear Basket Strainer Lid for Visual Inspection
- Elevated Base Ensures Better Ventilation and Protection from Flooding
- Perforated 1/8" HDPE Strainer Basket
- Dual Voltage 230V/115V for Greater Install Versatility
- Drop-in Replacement for any existing Lifestar® Installation

6 SPEED MOTOR

LIFESTAR® XE

- 24 Hour Programmable Daily Schedule with up to 6 Speed Selections
- One-push Motor Speed Override
- Push Button with LED Indicator Ring Located on Motor Housing



LifeStar® MV

Single or Variable Speed Medium Head

Aquatic Pump

5 HP Single Phase and 2, 3, 5, 7 HP

3-Phase Single Speed TEFC

3 HP Variable Speed TEFC



KEY FEATURES

- Ideal for Sensitive Aquatic Environments, Fresh or Salt Water Systems
- Corrosion Resistant GFPP Housing for Long Term Performance
- True Union 2-1/2" x 3" Socket End Connections
- Fully Programmable Multi-Position or Remote Mount VS Interface
- 3" ANSI Class 150 Flange Connection from Pump to Basket
- Silicon Carbide/Silicon Carbide Shaft Seal
- All Wetted Hardware Manufactured from 316 Stainless Steel
- FPM Seals Standard
- Available In 1-phase and 3-phase Models
- High Efficiency Enclosed Impeller
- Self-Priming Pump – Up to 10 feet

REMOTE MOUNT BASKET

LIFESTAR® MV

- Modular Strainer Basket Design -Can Be Mounted Remotely
- Clear High Capacity Basket Strainer Lid for Visual Inspection
- Oversized Strainer Basket with HDPE 1/8th Perf Basket



HCF SERIES

Sand Filters

Laminated FRP

30", 34", and 36" Diameters

Bobbin Wound FRP

42", 48", 55", and 63" Diameters



KEY FEATURES

- 50PSI Max Working Pressure
- EPDM O-ring and Seals
- Industrial filament-wound fiberglass with UV-protectant gel coat
- Transparent manway design
- Multi-diffuser Distribution Heads and Oversized Laterals
- Robust PVC and ABS injection-molded internals with slotted laterals
- Valve and pressure gauge configuration

OPTIONS

- Hayward GG Series Gauges & Gauge Guards for Saltwater Applications
- Multiport Valve
- Hayward BYV Series Butterfly Valves
- Hayward TBH Series True Union Ball Valves



Contact factory for special sizes and requirements

FLV/CFLV SERIES

Simplex & Duplex Bag/Cartridge Filters

Single Length 1-1/4" - 2" / DN32-50

GFPP, PVC, CPVC

Double Length 1-1/4" - 4" DN65-100

GFPP, PVC, CPVC



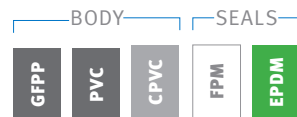
KEY FEATURES

- GFPP, PVC or CPVC Material
- Heavy Duty Injection Molded Construction with True Union Design
- True Union End Connections - Socket, Threaded or Flanged
- Solid Heavy-Duty Basket Standard
- Hand Removable Ergonomic Cover with Liquid Displacing Dome
- Vent Valve on Cover
- In-Line or Loop Configuration
- Drain Port at Bottom
- Integral Mounting Base

OPTIONS

- NEW HDPE End Connectors available in SDR 9, 11, 17 for 2" & 3"
- Pressure Differential Gauge and Switch
- EPDM Seals
- Cartridge Adapters - CFLV only
- Duplex Configurations

MATERIALS



SYSTEM PROTECTION

Hayward offers a full line of Pressure Differential Gauge kits to help better protect your vital systems from damage. Pressure Differential Gauges indicate when to clean, change or replace your bag filter or strainer.



"Patented" Pat. No.:9,630,127

LS SERIES

Aquatic Sand Filter



KEY FEATURES

- Ideal for Sensitive Aquatic Environments or Salt Water Systems
- 31" and 36" Sizes
- All Wetted Hardware Manufactured from 316 Stainless Steel
- Corrosion Resistant Thermoplastic Housing and Base
- Durable Flanged Inspection Cover
- Integral Top Diffuser
- Efficient, Multilateral Underdrain Assembly
- Integral Molded Drain Plug

OPTIONS

- LS Aquatic 6-Way Multiport Valve

Z SERIES

Solenoid Diaphragm Metering Pumps

Analog or Digital Operation



KEY FEATURES

- Analog and Digital Interface
- Three Pump Sizes Cover 1 To 29 GPH
- Standard One Piece Molded PVDF Pump Head
- PTFE Diaphragm Standard
- NEMA 4X Design/IP65 Rate
- Front facing controls, tubing and wiring connections allow for easy and flexible installation
- Built-In Degassing Valve on 100 and 200 Sizes
- Multi-Voltage Motor
- Complete Kit Includes PVDF Foot Valve, PVDF Injection Valve and Required Tubing

SB SERIES

Simplex & Duplex Basket Strainers

1/2" to 4" / DN15-100
PVC, CPVC, GFPP, and Eastar®
6" to 8" / DN150-200
PVC, CPVC
1/2" to 2" / DN15-50 PVDF



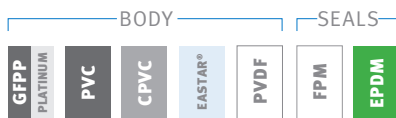
KEY FEATURES

- PVC, CPVC, GFPP, PVDF and Eastar®
- Pressure Rated at 150 PSI/10 Bar in All Sizes @ 70°F Non-Shock
- Ergonomic Hand Removable Cover
- In-Line or Loop Connections
- External Cover Threads
- Integral Flat Mounting Bases
- Thermoplastic Baskets Standard
- Ideal for protecting pumps and other critical system equipment

OPTIONS

- NEW HDPE End Connectors available in SDR 9, 11 in 1", SDR 9, 11, 17 from 2" - 3"
- Stainless Steel, Monel®, Hastelloy® and Titanium Strainer Baskets
- Pressure Differential Gauge and Switch for 6" and 8" / DN150-200 Sizes
- Baskets Available with Perforated or Mesh Liners

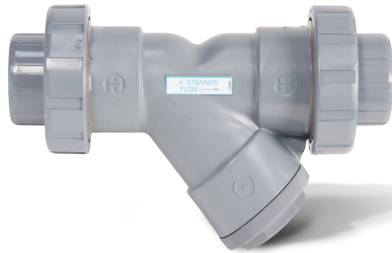
MATERIALS



YS SERIES

Y-Strainers

1/2" to 2" / DN15-50
PVC, CPVC, CLEAR PVC
2-1/2" to 4" / DN65-100
PVC, CPVC
1/2" to 1" / DN15-25 PVDF



KEY FEATURES

- Available in PVC, CPVC, Clear PVC and PVDF
- Pressure Rated at 150 PSI/10 Bar in All Sizes @ 70°F Non-Shock
- For Horizontal or Vertical Installation
- Molded-In or True Union Socket or Threaded End Connections
- FPM or EPDM Seals
- 2:1 Open Area Ratio
- Hex Cap for Easy Access to Screen
- Standard Screen 1/32" Perforation*

*Standard PVDF Screen Has 3/32" Perforation

OPTIONS

- NEW HDPE End Connectors available in SDR 9, 11 through 1", SDR 9, 11, 17 from 2" - 3"
- Stainless Steel or other Alloys Perf or Mesh
- Strainer Screens Available in Various Sizes

MATERIALS



BFA/BFAS SERIES

Bulkhead Fittings

1/2" - 6"
PVC, CPVC, PP and GFPP



KEY FEATURES

- Available in PVC, CPVC, PP and GFPP
- FPM or EPDM Gasket Seal
- Left-Hand Threads
- Buttress Threads Protect Against Blowout
- Hex Body for One-Person Installation
- Rated at 150 PSI
- NSF / ANSI 61 and NSF / ANSI 372 Listed

OPTIONS

- Ready Flanges (for Making Flanged Connections to Tanks)
- Tank-Tite™ Compression Fitting
- BFA SERIES Oversized Flanges



BUILT BETTER FROM THE INSIDE OUT

SAFETY, CONTROL AND PERFORMANCE. THE TBH SERIES THERMOPLASTIC BALL VALVE IS UNDENIABLY THE LEADER OF THE PACK:

- TBH Series True Union Ball Valves offer the lowest cost of ownership over the lifespan of valve service. True union end connections drastically reduce downtime due to repair, require no pipe cutting or gluing to perform maintenance.
- TBH & CVH Series valves come standard with four Lock-out/Tag-out positions molded into the valve flange & handle locking plate, offering superior operator safety and system protection.
- Permanent markings on both front and back of valve body, preventing label deterioration as well as providing in-field digital access to installation and repair manuals using lasered QR code.
- ISO5211 top works provides superior versatility no matter the operation be it manual, gear op or electric/pneumatic actuation.

- Domestic manufacturing under strict ISO quality standards means shorter lead times, less operational downtime and trusted performance.



Hayward Flow Control isn't your run-of-the-mill thermoplastic flow controls manufacturer. We stand alone in offering the leading American solution with engineering, manufacturing, customer support and tech services all under the same roof: right in your backyard. Tired of overseas lead times? With manufacturing on American soil, Hayward Flow Control is well equipped to meet your needs, all with a global, industry-leading three-year warranty.



HAYWARD KNOWS AQUATICS



TBH SERIES

True Union Ball Valves

1/2" to 6" / DN8-150 PVC, CPVC



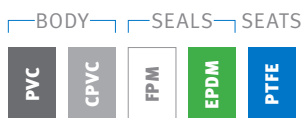
KEY FEATURES

- Full Port Design
- System2™ Sealing Technology provides longer cycle life, 1/4" - 2"
- 250 PSI / 16 Bar, non-shock at 70°F / 23°C full pressure rating, 1/4" - 2"
- 235 PSI / 16 Bar, non-shock at 70°F / 23°C full pressure rating, 2-1/2" - 4"
- 150 PSI / 10 Bar, non-shock at 70°F / 23°C full pressure rating, 6"
- Lockout/Tagout mechanism that secures directly to valve body for enhanced safety
- Ergonomic handle for improved grip and comfort
- ISO 5211 top flange simplifies actuation
- Permanent markings, eliminates labels
- Integral footpad for skid or panel mount
- FPM or EPDM seals
- Double O-Ring stem seals
- Reversible PTFE seats – Standard

OPTIONS

- NEW HDPE End Connectors available in SDR 9, 11 through 1", SDR 9, 11, 17 from 1-1/4" - 4"
- Pneumatic or Electric Actuators
- Stem Extensions
- Manual Limit Switch

MATERIALS



Patented Pat No. 11,131,404 and Other Patents Pending

BYV SERIES

Butterfly Valves

2" to 12" / DN50-300 PVC, CPVC, GFPP



KEY FEATURES

- One Piece Injection Molded Body
- Hand Lever with 19 Lockable Stop Positions & 360° Interlocking Splines
- External Disc Position and Flow Indication
- Hydro-dynamic Centric Disc for Increased Flow Performance
- Over-Sized Liner Face Maximizes Surface Contact with Flanges
- 1-Piece 316 Stainless Steel Stem with Threaded Retaining Gland
- Stem Bearing and Seal Retainer for Absolute Stem Position and Seal
- ISO 5211 Top Flange and Stem Drive
- All Sizes Meet ANSI B16.10 / ISO 5752 Face to Face Dimensions
- Pressure Rated at 150 PSI/10 Bar in All Sizes @ 70°F Non-Shock
- **BYB Series Large Diameter Butterfly Valves:** 14" to 24" available in PVC, CPVC, PP and PVDF

OPTIONS

- Over-Molded 316 Stainless Steel Lugs
- Titanium or Hastelloy™ Stem Materials
- Gear Operators
- Complete Range of Pneumatic or Electric Actuators
- Lock Out Caps
- Stem Extensions
- Chain Operator for Gear Box

MATERIALS



Certified to NSF/ANSI 61 & 372, PVC/EPDM 2" - 12", CPVC/EPDM 4" - 12"

"Patented & Other Patents Pending" Pat. No.: 9,695,947

BYCN SERIES

Butterfly Valves

2" to 8" DN50-DN200 PVC



KEY FEATURES

- Distinctive Ergonomic Handle with Locout Feature
- Wafer Body Design
- Fits ANSI 150 or PN10 Flange Patterns
- PVC Body with PVC Disc
- One-Piece Stainless Steel Stem 316
- NSF/ANSI-61 Listed (BYCN 3"-8")

OPTIONS

- Gear Operators
- Pneumatic and Electric Actuation

MATERIALS



QV SERIES QIC2™

Compact Ball Valves

1/2" to 2" PVC



KEY FEATURES

- Gray PVC
- Rugged, Compact and Lightweight Design
- Full Port Design
- Socket or Threaded Ends
- PTFE Seats
- EPDM O-Ring Seals
- Low Torque, Easy 1/4-Turn Operation
- No Integral Parts to Replace
- Perfect for OEM Requirements

EAU1 SERIES

Industrial Electric Actuators

Ball Valves up to 2" / DN50



KEY FEATURES

- UL/CSA Listed Motor
- Thermoplastic NEMA 4/4X Enclosure
- Permanently Lubricated Gear Train
- Actuator brake
- 90 or 180°F Operation
- Unidirectional, Not reversing
- Thermal Overload Protection
- Lightweight, Compact and Inexpensive
- ISO 5211 Mounting Base

OPTIONS

- Voltage options of 12, 24, or 220 VAC and 12 or 24 VDC

PNEUMATIC ACTUATION BY HAYWARD

Hayward Flow Control offers a full line of Pneumatic Actuation including the compact PS and PC Series Pneumatic Actuators. Perfect for those tight spaces and applications that require a lightweight, highly adjustable pneumatic solution. Scotch Yoke or 4-pistonrack and pinion design in both double-acting and fail-safe spring return. Head to our website to learn more!



PC Series



PS Series

ECP SERIES

Industrial Electric Actuators

Ball & Butterfly Valves up to 6" / DN150



KEY FEATURES

- Ideal for Corrosive Atmosphere and Environments
- Corrosion-Resistant GFPP Housing
- LED Status Light
- Anti-Condensation Heater
- Manual Override
- Position Indicator
- 4 SPDT Micro Limit Switches
- Lightweight - Easy for Installation
- ISO 5211 Mounting Base
- Stainless Steel Fasteners 303 SS
- 100% Factory Tested
- Single Phase 24~265VAC/VDC

OPTIONS

- Digital Positioner 0-20mA, 4-20mA or 0-10V
- Battery Backup

HRS SERIES

Industrial Electric Actuators

266 - 177,000 Torque in/lbs



KEY FEATURES

- Units are equipped with two (2) volt-free Form A Auxiliary switches
- ISO 5211 compliant mounting with a double square female drive socket
- Raised visual position indicator
- NEMA 4X/IP67 compliant
- EMT entry ports with sealed cable glands
- Internal Heater Standard
- Manual override
- Class Zone available
- Available Voltages 12 VAC/VDC, 24 VAC/VDC, 120/230 VAC

OPTIONS

- Power Supply Flexibility
- On/Off or Proportional Control
- Local Control Stations
- IP68 Submersion
- Battery Backup
- Supercap Backup
- Interchangeable ISO5211 Flange & Drives



Local Control Station

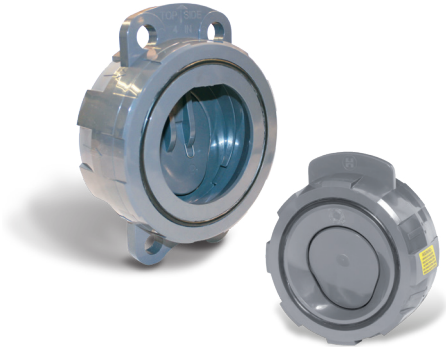


Battery Backup

WCV SERIES

Full Pattern Wafer Valves

2" to 12" / DN50-250 PVC & CPVC



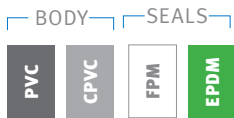
KEY FEATURES

- Robust Full Pattern Body
- Available in PVC and CPVC
- Pressure Rated at 150 PSI/10 Bar in All Sizes @ 70°F Non-Shock
- No Special Spacers or Flanges Required
- High Cv Rating Equal to Metal Check Valves, Saves on Energy and Pump Wear
- FPM or EPDM Gasket and Face Seal
- One-Piece Disc and Shaft Design

OPTIONS

- 316 Stainless Steel or Hastelloy® Disc Spring

MATERIALS



10" WCV

Patent No. 8,887,757

YC SERIES

Y-Check Valves

1/2" to 4" / DN15-100 PVC, CPVC

1/2" to 1" / DN15-25 PVDF



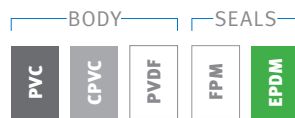
KEY FEATURES

- Available in PVC, CPVC, and PVDF
- Pressure Rated at 150 PSI/10 Bar in All Sizes @ 70°F Non-Shock
- Horizontal or Vertical Installation
- Molded-In or True Union Socket on Threaded Connections
- Minimal Back Pressure Required to Seat Piston
- PVC, CPVC or PVDF Coil to Guide Piston to a Positive Seat Disc Spring

OPTIONS

- NEW HDPE End Connectors available in SDR 9, 11 through 1", SDR 9, 11, 17 from 2" - 3"
- 316 Stainless Steel or Hastelloy® Disc Spring

MATERIALS



TC SERIES

True Union Ball Check Valves

1/2" to 4" / DN15-100 PVC, CPVC

1/2" to 2" / DN15-DN50 PVC, CPVC, PP

2-1/2" to 6" / DN63-DN150 PVC, CPVC

1/4" to 1" / DN8-DN28 PVDF



Patent No. 8,887,757

KEY FEATURES

- Available in PVC, CPVC, PP and PVDF
- For Horizontal or Vertical Installation
- Square Cut Seat for Positive Sealing
- Seats with Minimum Back Pressure
- 1/4" and 3/8" are Trim Check Design

OPTIONS

- NEW HDPE End Connectors available in SDR 9, 11 through 1", SDR 9, 11, 17 from 1-1/4" - 4"
- Foot Valve Screens

SW SERIES

Swing Check Valves

2" to 8" / DN50-200 PVC & CPVC



KEY FEATURES

- Available in PVC, CPVC and GFPP
- High Temperature/Pressure Ratings
- Horizontal or Vertical Installation
- Two-in-One Seat Design
- Built-in Flange Seals
- Two Drain Ports
- Self-Aligning Clapper Seals
- High Cv Rating and Full Flow Design

OPTIONS

- Counterweight for Closing Assistance
- Limit Switch for Position Indication

LIQUID LEVEL, FLOW AND ANALYTICAL PRODUCTS FROM HAYWARD FLOW CONTROL MEASURE AND CONTROL

HLS SERIES

Level Sensors



KEY FEATURES

- Highly accurate hydrostatic pressure measurement, 0.25% accuracy full scale
- All CPVC housing with Al₂O₃ (Alumina) sensing diaphragm
- 0-6ft, 0-15 and 0-33 ft measurement range, 33 and 49 ft of PTFE coated cable std
- 10-35 VDC power required
- 4-20mA analog output signal
- 0-140°F temperature range
- MP10 desiccant tube and MP11 protection volume breather protection available
- Ceramic Sink Weights available for high specific gravity applications

HLST SERIES

Indicating Level Transmitter



KEY FEATURES

- Dual Channel input and display (CH2 is RTD for temperature)
- Configurable, multi-color LCD display
- Simple, Intuitive menu makes set-up quick and easy
- NEMA 4X (IP65) Face, 1/4 DIN chassis dimensions
- 100-240 VAC, 50-60 Hz power range std.
- Programmable dual relays and dual open collectors
- Optional HMCENC NEMA 4X Electrical Enclosure, 1/4 DIN Cutout, 6 wire connectors

HEX800 SERIES

Flowmeter



KEY FEATURES

- Insertion Electromagnetic Flow Sensor, 1" to 12"
- No moving parts, provides high reliability
- PVC Wetted Body, PVDF end cap, Hastelloy C Electrodes, EPDM o-ring, Cast AL Housing
- 0.28 to 20 FPS Velocity Range equals <1 GPM to 7000 gpm based on line diameter
- 150 psi @ 75F max, 32 to 130F
- +/- 1% Accuracy of Full Scale
- Blind 4-20mA output or integral (Built-in) Indicating Transmitter (HFT440)
- Full range of required insertion fittings available

HMC200 SERIES

MULTI-PARAMETER CONTROLLER



KEY FEATURES HMC200

- pH, ORP, conductivity & flow parameters available
- Highly visible large backlit LCD display
- Flexible and easy calibration, including multipoint conductivity calibration for acids and bases
- 4-20mA process output with range scaling and PID Control
- Universal mounting hardware for surface and panel mounting

HMC300 SERIES

WEB ENABLED MULTI-INPUT CONTROLLER



KEY FEATURES HMC300

- Inputs for four 4-20 mA sensors of any kind in any combination: pH, ORP, conductivity, dissolved O₂, Chlorine, level and more
- Inputs for three frequency or pulse counters, including Hayward HEX flow sensors
- Outputs of four relays programmable for any of the inputs
- Alarm notifications by e-mail, text, and/or display for each input

SINGLE-ELEMENT AND MULTI-ELEMENT CARTRIDGE FILTERS FOR SALTWATER AND FRESHWATER APPLICATIONS

SwimClear™

Single-Element Cartridge Filter

100ft², 150ft² and 200ft²
Up to 75 gpm



KEY FEATURES

- For Saltwater and Freshwater Applications
- Ideal for Small Systems and Systems with Limited Backwash Water
- Corrosion Resistant Thermoplastic Construction
- Easy-off Ring Lock Lid
- Nominal 30 Micron Polyester Cartridge
- Includes Pressure Gauge, Relief Valve and Drain Fitting
- 2" by 2.5" Union Connection Inlet/Outlets

SwimClear™

Multi-Element Cartridge Filter

225ft² up to 700ft²
Up to 150 gpm



KEY FEATURES

- For Saltwater and Freshwater Applications
- Ideal for Small Systems and Systems with Limited Backwash Water
- Corrosion Resistant Thermoplastic Construction
- Center Based Ring Clamp for Lid Removal
- Nominal 30 Micron Polyester Cartridge
- Includes Pressure Gauge, Relief Valve and Drain Fitting
- 2" by 2.5" Union Connection Inlet/Outlets

StarClear™ & StarClear™ Plus

Single-Element Cartridge Filter

25ft² up to 175ft²
Up to 66 gpm



KEY FEATURES

- For Freshwater Applications Only
- Ideal for Small Systems and Systems with Limited Backwash Water
- Corrosion Resistant Thermoplastic Construction
- Single Locking Knob for Lid Removal
- Nominal 30 Micron Polyester Cartridge
- Includes Pressure Gauge, Relief Valve and 1/2" Drain Fitting
- 1" or 2" Connection Inlet/Outlets



HAYWARD®

GOT HEAT?

Hayward Industries offers both gas and electric heaters up to 500,000 BTU's and heat pump options for both heating and cooling. Please consult Hayward Flow Control Aquatics team for sizing, applications and Aquatic Life Support Systems for more information.

UNIVERSAL H-SERIES

High Performance Gas Heater



KEY FEATURES

- Up to 500,000 BTU's
- For Freshwater Use Only
- Standard Cupro Nickel Heat Exchanger
- Exclusive "Totally Managed" Curpo Nickel Heat Exchanger Water Flow
- Patented Header By-pass Design
- Uniform Water Velocity Through All Piping for Faster Heating
- Up to 18% Savings by Reducing Pump Run-Time
- 2" by 2.5" Union Connection Inlet/ Outlets
- Low NOx Emissions Meets Clean Air Quality Standards
- Covered by Hayward Industries, Inc. Pool division Warranty

OPTIONS

- Propane or Natural Gas

UNIVERSAL H-SERIES ASME

High Performance Commercial Gas Heater



KEY FEATURES

- Up to 500,000 BTU's
- For Freshwater Use Only
- Patented Cupro Nickel Fin Plate™ Heat Exchanger
- Electronic Lock-out Prevents Unauthorized Access to Control Panel
- Patented Header By-pass Design
- ASME Pressure Relief Valve Standard
- Dual Voltage Conversion with Fuse-protected Circuit Boards
- 2" by 2.5" Union Connection Inlet/ Outlets
- Low NOx Emissions Meets Clean Air Quality Standards
- Covered by Hayward Industries, Inc. Pool division Warranty

OPTIONS

- Propane or Natural Gas

HeatPro SERIES

High Performance Heat Pump



KEY FEATURES

- Up to 140,000 BTU's (heat only)
- For Freshwater Use Only
- Exclusive 'Ultra Gold' Evaporator Coil Corrosion Resistant
- Extremely Quiet Operation
- AHRI Certified Performance
- 2" by 2.5" Union Connection Inlet/ Outlets
- 240V Single Phase
- Lightweight for Ease of Installation
- Covered by Hayward Industries, Inc. Pool division Warranty

HeatPro Heat and Cool Heat Pump



KEY FEATURES

- * Available in 50,000 and 70,000 BTU's
- * Digital Control Panel
- * Advanced Heat Pump Technology
- * Extremely Quiet Operation
- * Efficient Rotary compressor and low-noise fan
- * Durable titanium heat exchanger
- * 208-240 V Single Phase
- * Lightweight for Ease of Installation
- * Covered by Hayward Industries, Inc Pool division warranty

HDPE END CONNECTORS BY HAYWARD® FLOW CONTROL

from Hayward Flow Control, HDPE end connectors for Hayward Valves and Strainers. Offered in SDR 9, 11 and 17 sizes in True Union Connectors.



TBH SERIES

True Union Ball Valves

1/2" to 1" Available in SDR 9, 11
1-1/4" to 4" Available in SDR 9, 11, 17



TC SERIES

True Union Ball Check Valves

1/2" to 1" Available in SDR 9, 11
1-1/4" to 4" Available in SDR 9, 11, 17



YC SERIES

True Union Y-Check Valves

1/2" to 1" Available in SDR 9, 11
2" to 3" Available in SDR 9, 11, 17



YS SERIES

True Union Y-Strainers

1/2" to 1" Available in SDR 9, 11
2" to 3" Available in SDR 9, 11, 17



SB SERIES

True Union Simplex Basket Strainers

1" Available in SDR 9, 11
2" to 3" Available in SDR 9, 11, 17



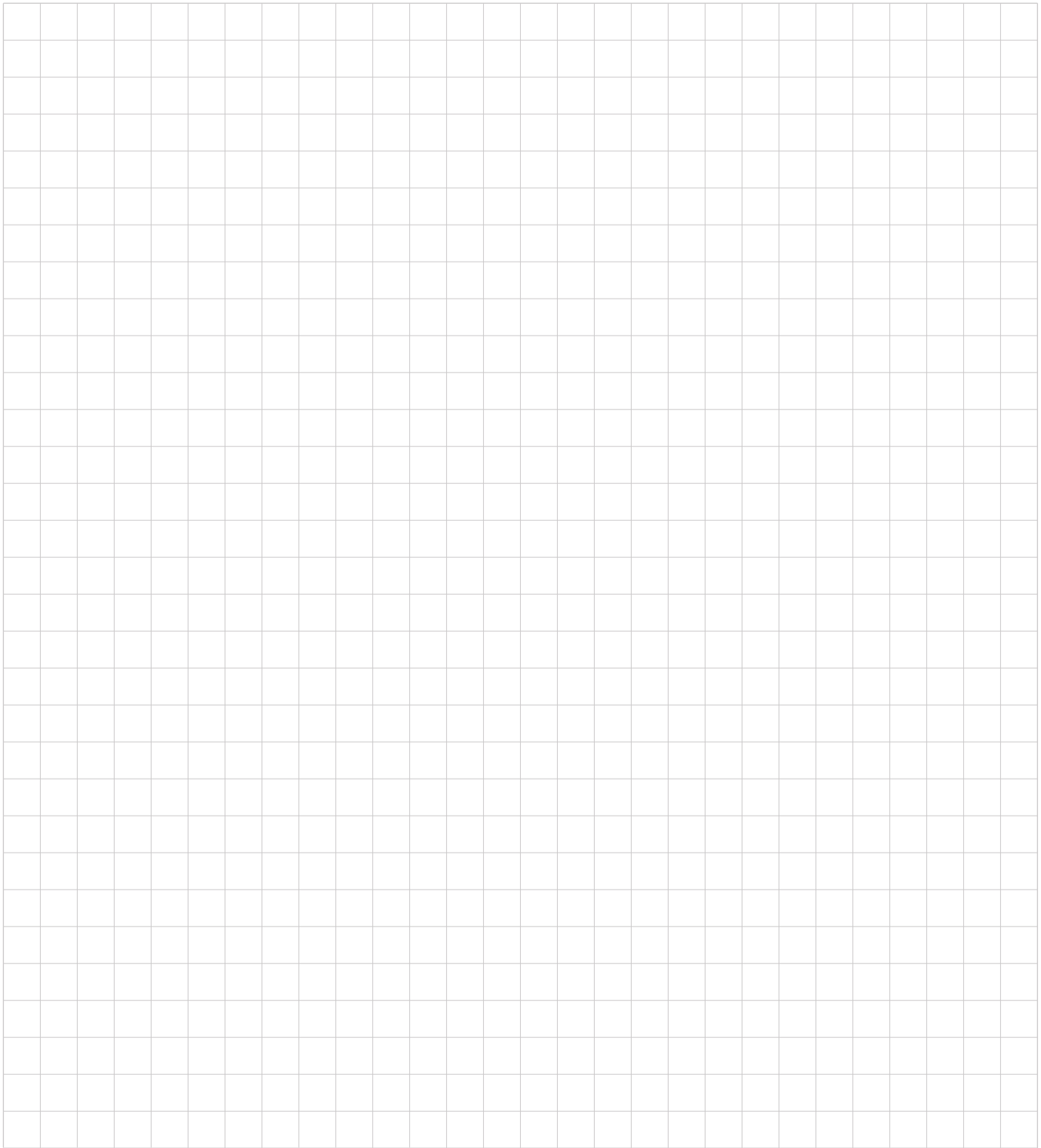
FLV/CFLV SERIES

Bag & Cartridge Filter Vessels

2" & 3" Available in SDR 9, 11, 17



† HDPE end connectors may be provided as a kit. Contact factory for metric availability.



Hayward Flow Control is passionate about solving our customer's problems.

Our products serve vital roles in numerous unforgiving processes that impact all walks of life. With an industrial mindset and a passion for excellence, Hayward Flow Control continues to drive forward with purpose, forward thinking and American ingenuity. We mean it when we say:

TRUE GRIT.
WE HAVE IT.



Hayward is a registered trademark of Hayward Industries, Inc.
© 2024 Hayward Industries, Inc.

AQC0524

USA: 1.888.429.4635 | Fax: 1.888.778.8410 | One Hayward Industrial Drive, Clemmons, NC 27012 | Email: hfcsales@hayward.com
Canada: 1.888.238.7665 | Fax: 1.905.829.3636 | 2880 Plymouth Drive, Oakville, ON L6H 5R4 | Email: hflowcanada@hayward.com
Visit us at: haywardflowcontrol.com