



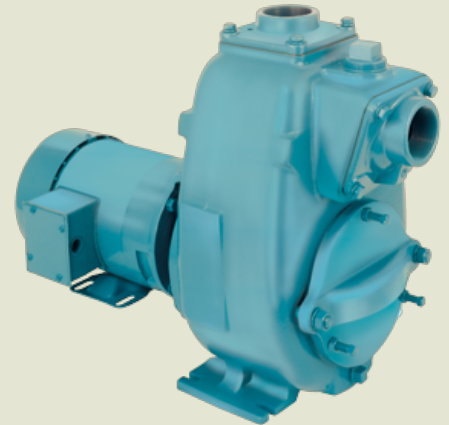
2CT-3

3" x 3" Self Priming Centrifugal Trash Pump

The 2CT-3 pump quickly close couples to a standard motor 184TC or 215TC frame. The 2CT features a back pull out design and a removable front trash cleanout for ease of maintenance. A 304SS drive sleeve protects the close coupled driver shaft. Available options include a bearing pedestal for base mounted pumps as well as a hydraulic motor drive pedestal.

SPECIFICATIONS:

Suction And Discharge	3" x 3" NPT
Materials Of Construction	Cast iron
Flow	Up to 400 GPM
Head Feet	Up to 125'
Impeller	5.82" ductile iron
Motor	Up to 10 HP
Drive Options	Close coupled 184TC, Close coupled 215TC, Close coupled 145TC, Pedestal, PumPAK® (without motor)
Seal	Standard carbon / ceramic / Viton
Max Solid Size	1.5"



Application

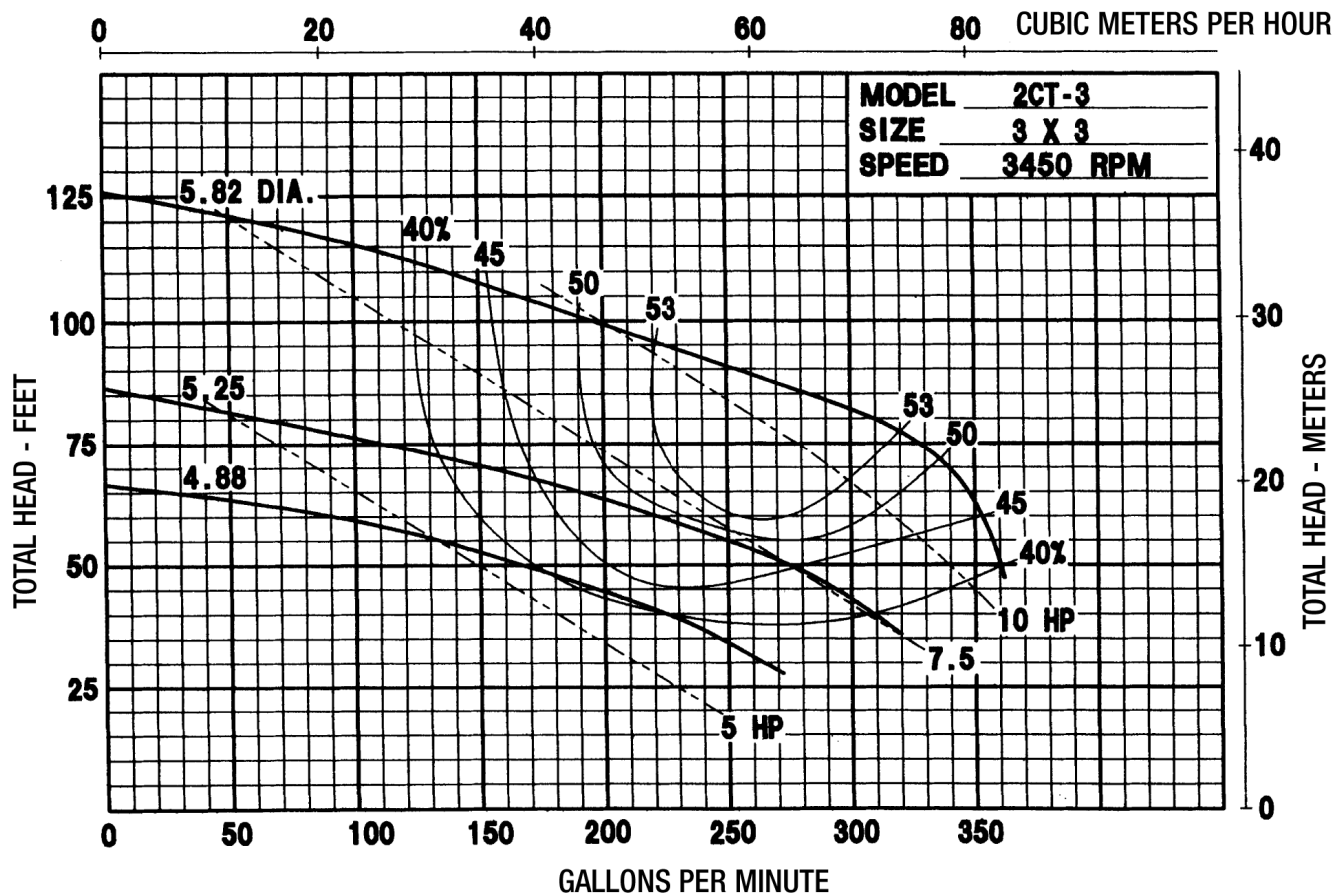
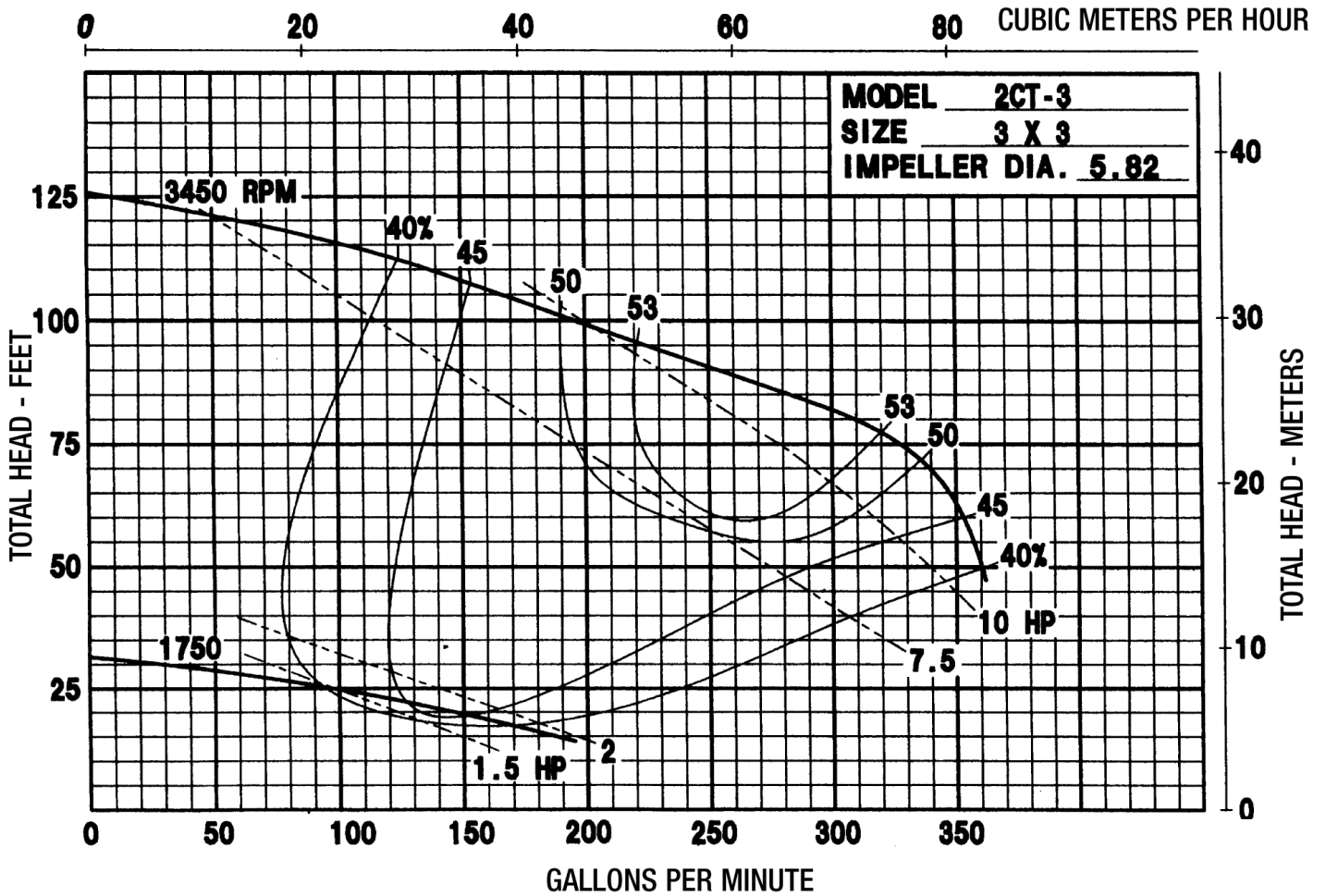
- Commercial
- Industrial
- OEM

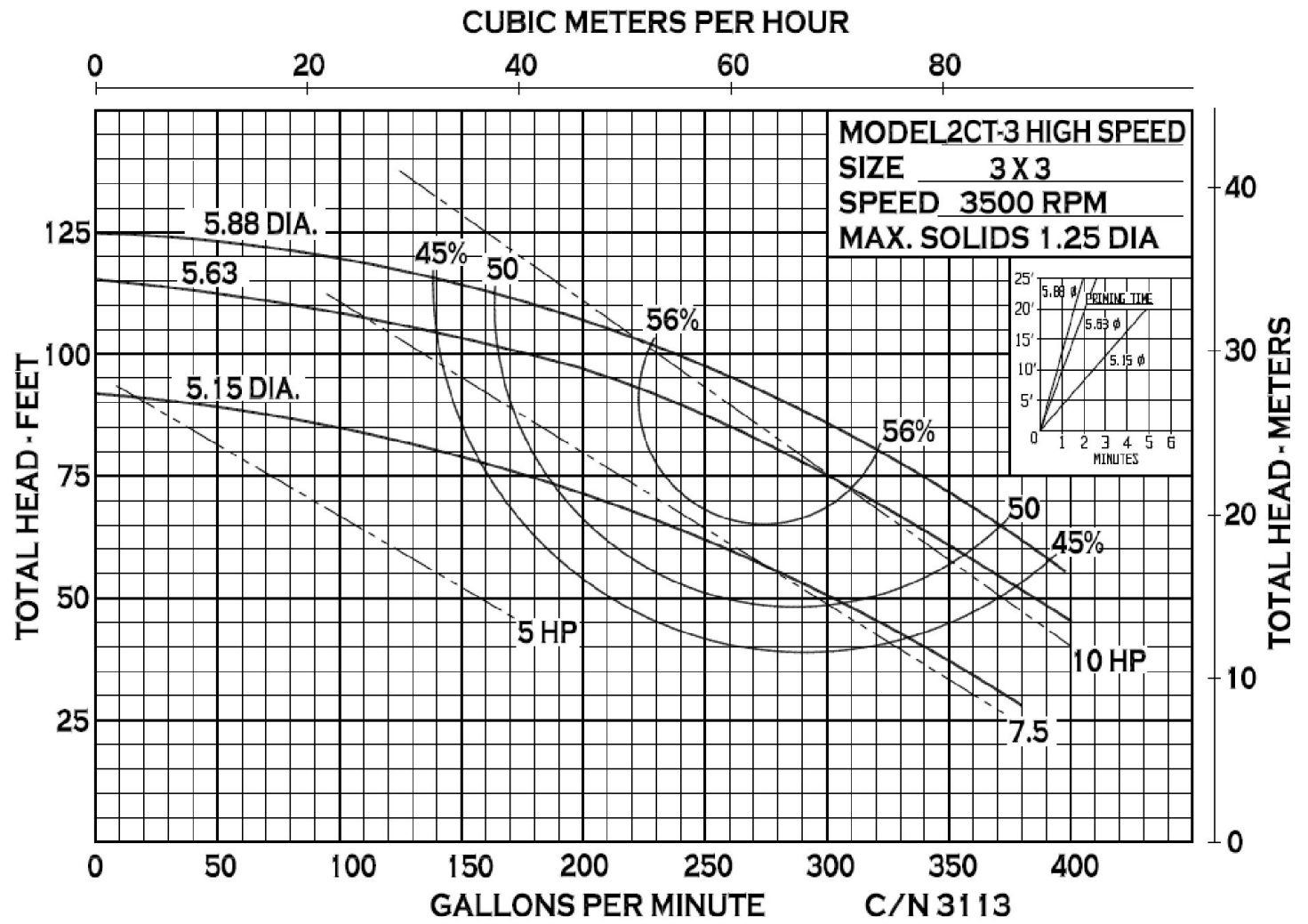
Drive Sleeve

- 304 Stainless Steel

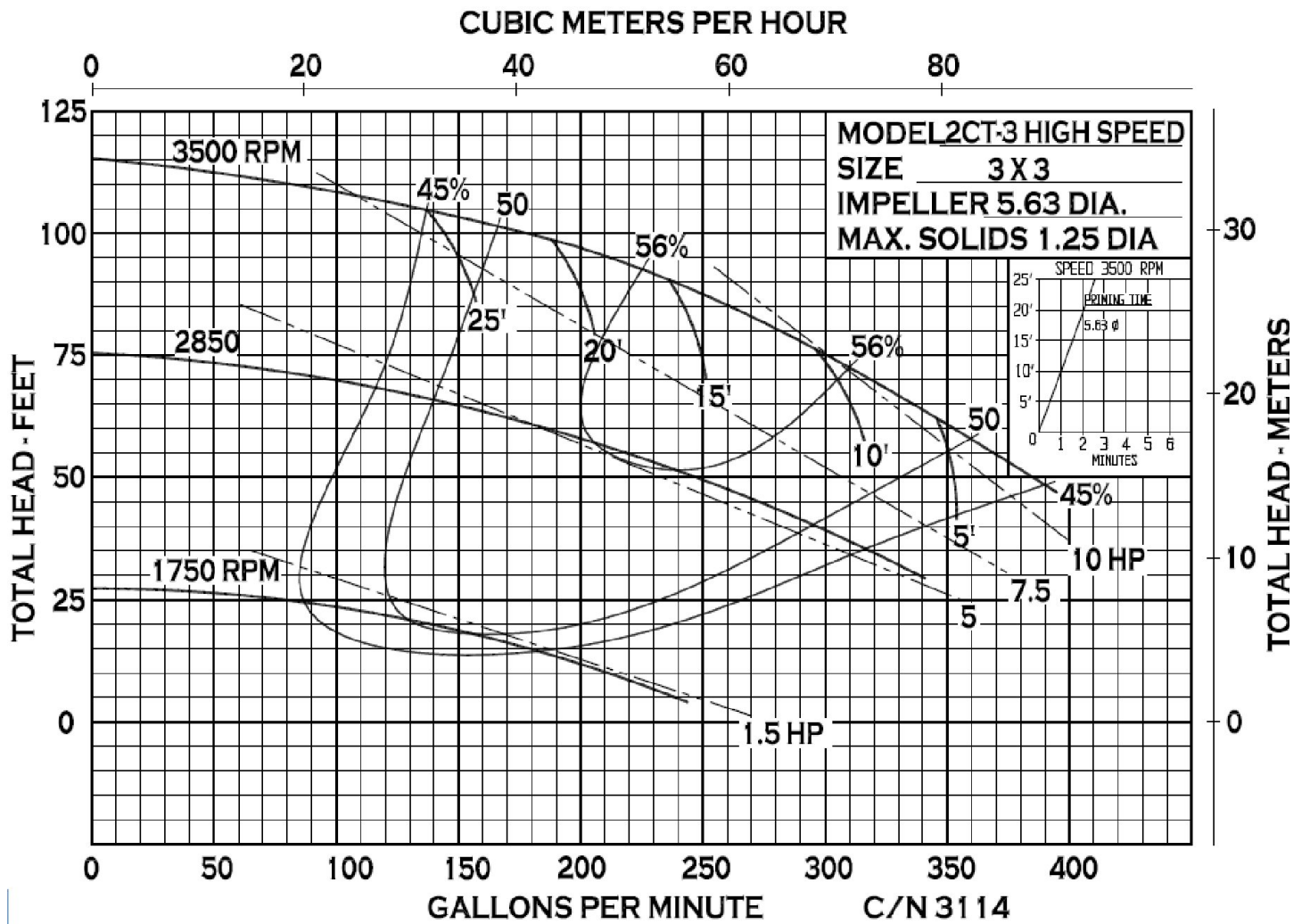
Features

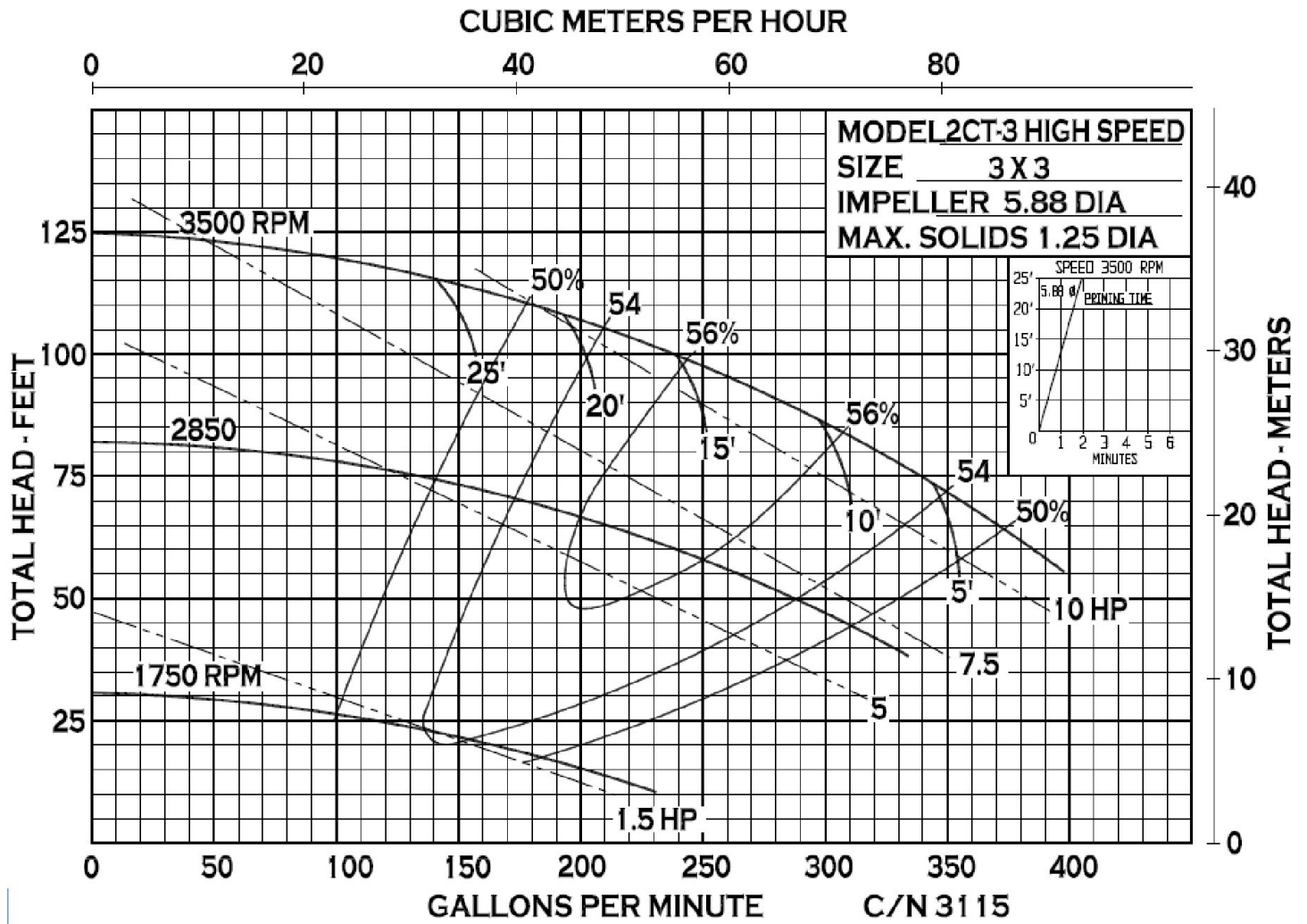
- Back pull out design
- Removeable trash cleanout
- Will pass up to 1.5" solids

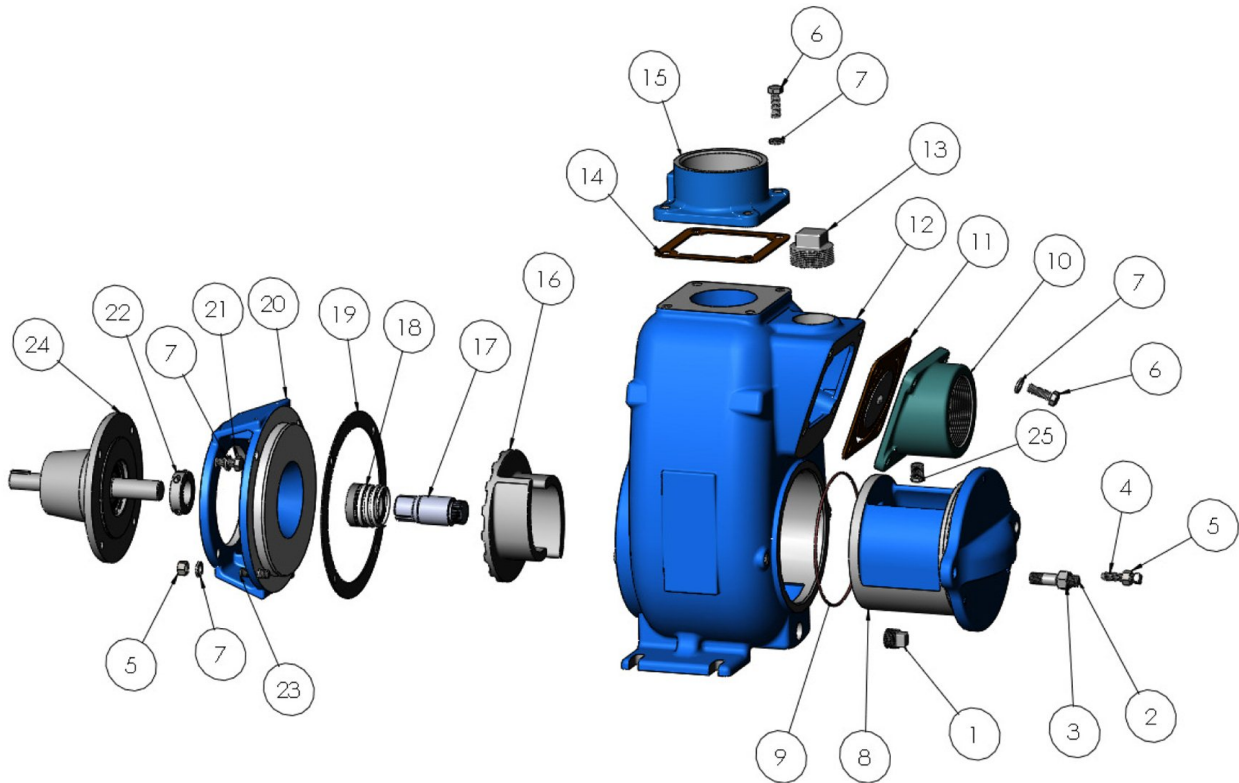




34800 BENNETT - FRASER, MI 48026-1686
 (586) 293-8240 - FAX (586) 293-8469
 (800) 563-8006 - www.mppumps.com

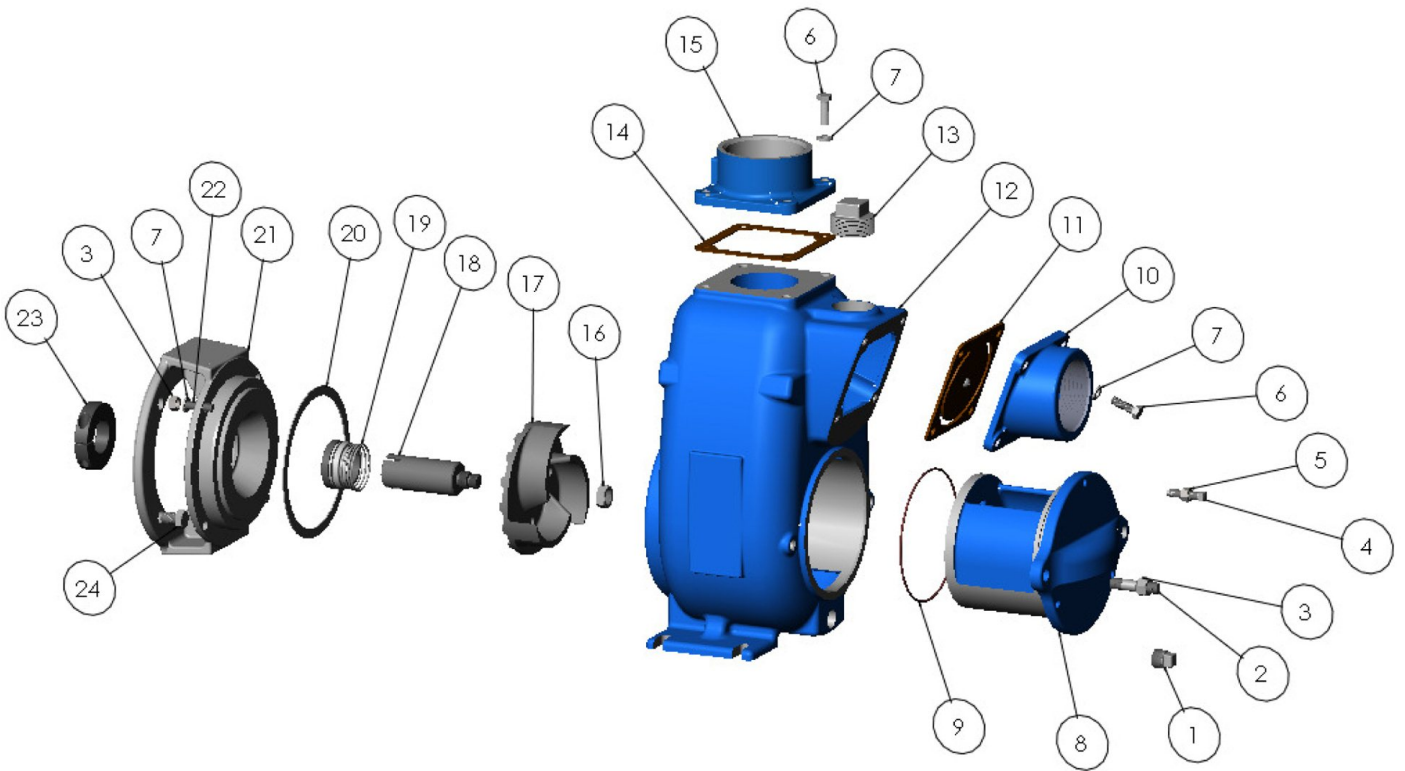






ITEM NO.	PART NO.	DESCRIPTION	QTY.		ITEM NO.	PART NO.	DESCRIPTION	QTY.	
1	41479	PIPE PLUG- 1/2 NPT	1	*	14	22358	GASKET- BUNA	1	
2	41449	STUD STL- 1/2-13 X 2.25	2		15	22471	FLANGE- DISCHARGE 3" NPT	1	
3	41553	HEXNUT STL. - 1/2-13	2		16	40015	IMPELLER D - 5.82"	1	
4	43926	SETSCREW STL. - 3/8--16	3		17	43907	DRIVE SLEEVE S.S. - 7/8"	1	
5	21268	HEXNUT S.S. - 3/8-16	7	*	18	43906	SEAL ASY T-21- CCS/VITON	1	
6	21291	CAPSCREW SS- 3/8-16 X 1.13	8	*	19	40815	GASKET - TAN FIBER	1	
7	21266	LOCKWASHER SS- 3/8	16		20	43910	ADAPTOR C.I.	1	
8	43905	CLEANOUT	1		21	21251	CAPSCREW S.S. - 1/2-13 X 7/8	4	
*	9	41187	O-RING	1		22	43908	CLAMP- 7/8"	1
	10	43934	FLANGE- SUCTION 3" NPT	1		23	21260	STUD SS- 3/8-16 X 1.32	4
*	11	23040	FLAPPER ASSEMBLY BUNA	1		24	30579	PED. ASSY. C.I.	1
	12	43903	VOLUTE C.I.	1		25	41475	PIPE PLUG C.I. 1/4" NPT	1
	13	41484	PIPE PLUG C.I. - 1 1/2" NPT	1					

* SUGGESTED REPLACEMENT PARTS



ITEM NO.	PART NO.	DESCRIPTION	QTY.		ITEM NO.	PART NO.	DESCRIPTION	QTY.
1	41479	PIPE PLUG- 1/2 NPT	1	*	14	22358	GASKET- BUNA	1
2	41449	STUD STL- 1/2-13 X 2.25	2		15	22471	FLANGE- DISCHARGE 3" NPT	1
3	41553	HEXNUT STL. - 1/2-13	2		16	29194	JAM NUT SS - 5/8-18	1
4	43926	SETScrew STL. - 3/8--16	3		17	44172	IMPELLER D - Ø5.88"	1
5	21268	HEXNUT S.S. - 3/8-16	7		18	31311	DRIVE SLEEVE S.S. - 1.375"	1
6	21291	CAPSCREW SS- 3/8-16 X 1.13	8	*	19	22361	SEAL ASSY T-21 - VITON	1
7	21266	LOCKWASHER SS- 3/8	8	*	20	44175	GASKET - TANFIBER	1
8	43905	CLEANOUT	1		21	44174	ADAPTER C.I.	1
*	9	41187	O-RING	1	22	21260	STUD SS- 3/8-16 X 1.32	4
10	22468	FLANGE- SUCTION 3" NPT	1		23	31312	CLAMP STL. - 1.5Ø I.D.	1
*	11	23040	FLAPPER ASSEMBLY	1	24	31235	CAPSCREW S.S. - 1/2-13 X .75	4
12	43903	VOLUTE C.I.	1					
13	41484	PIPE PLUG C.I. - 1 1/2" NPT	1					

* SUGGESTED REPLACEMENT PARTS