

Bronze Pedestal Rotary Gear Pumps

N13500 • N13510 Series



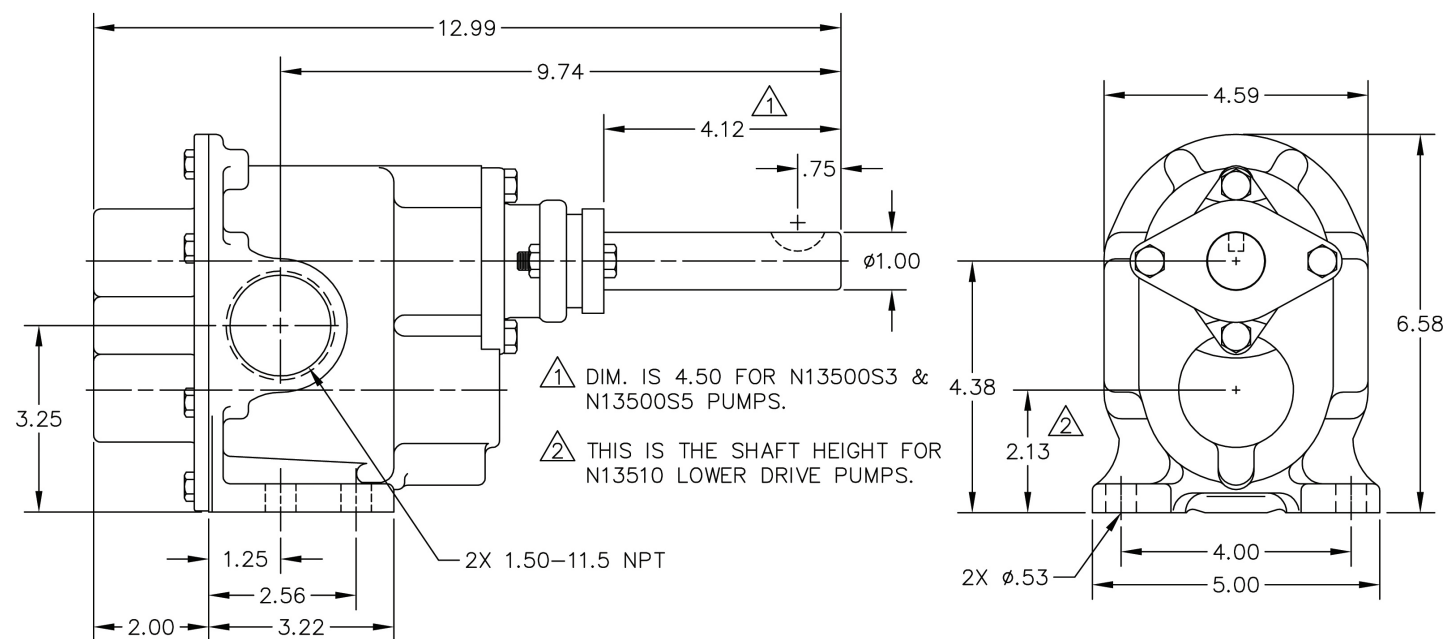
OBERDORFER PUMPS

by Gardner Denver

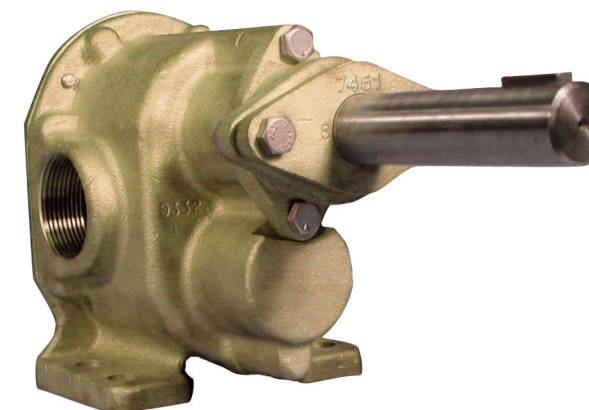
Bronze Pedestal Rotary Gear Pumps

N13500 • N13510 Series

Dimensions



1 1/2" NPT Ports



Model N13500-21 - Upper Drive
Model N13510-21 Lower Drive

FEATURES:

- Bronze Corrosion Resistant Castings
- Stainless Steel Shafts & Fasteners
- Self-Lubricating Carbon Bearings
- Packing (Braided Acrylic yarn with special lubricant and Graphite)
- Optional FKM Lip Seal or NBR Lip Seal
- For Mechanical Seals, see Model N13HDM
- For heavy pulley loads, see Model N13HDP

DRIVE:

Either direct drive with flexible coupling or pulley drive can be used. For pulley driven pumps a pillow block bearing must be used at the drive shaft end to absorb the belt forces. The drive shaft is sufficiently long enough to accommodate a pillow block in addition to the pulley.

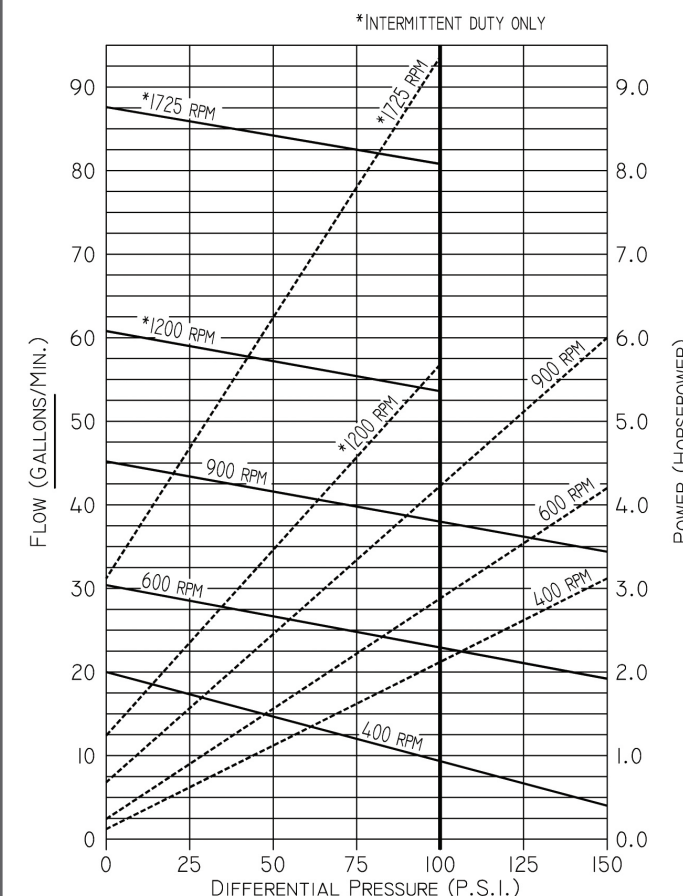
Correct alignment is absolutely essential for satisfactory pump life. Recheck alignment after the piping has been connected to the pump.

LIQUIDS AND TEMPERATURE:

Service life will be increased substantially if the liquid pumped is clean and has a lubricity value. These pumps have extremely close tolerances. Fine abrasives like sand, silt, or powders in suspension will destroy pumping ability.

PERFORMANCE:

CAPACITY WATER AT 70°F



Liquids compatible with bronze, stainless steel and the acrylic graphite packing can be pumped. Optional S5 FKM lip seal has NBR backup and stainless case. Solvent resistant packings and FKM packings are also available, check with Oberdorfer factory. When possible, flush the pump with water after using.

Temperature extremes are detrimental to service life and should be avoided. Basic metals of construction allow temperature range of -40° to 400° F. the acrylic graphite packing is rated to 500° F, the FKM lip seal is rated to 300° F. Freezing liquid in the pump can deform or damage the pump. Viscous liquids such as molasses or oils require a lower pumping speed, in extreme cases as low as 200 RPM. Consult factory



OBERDORFER PUMPS

by Gardner Denver

5900 Firestone Drive, Syracuse, NY 13206

Phone: (800) 448-1668; (315) 437-0361 • Fax: (315) 463-9561

Visit www.oberdorferpumps.com to find in-depth descriptions of the world's leading high-quality, dependable pumps.

Due to ongoing product improvements, data shown here is subject to change without notice. Contact Oberdorfer Pumps for latest specifications.

Bronze Pedestal Rotary Gear Pumps

N13500 • N13510 Series

for recommended speeds and increased horsepower requirements. Large suction lines are required to prevent cavitation which can cause pump destruction.

Liquids with specific gravities heavier than water such as dry cleaning fluids require an increase in motor horsepower directly proportional to the increase in specific gravity over water.

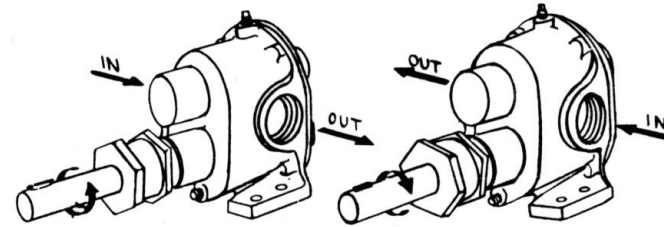
SUCTION LIFT:

A rotary gear pump is capable of lifting water on the suction side as high as 20 feet. Though gear pumps are self-priming, a foot valve is recommended. For pumping water directly from streams or ponds, a

wire mesh strainer must be used at the beginning of the suction line to prevent stones from entering the pump. Strainer and foot valve are commercially available as combination units.

ROTATION:

N13510-21 shown



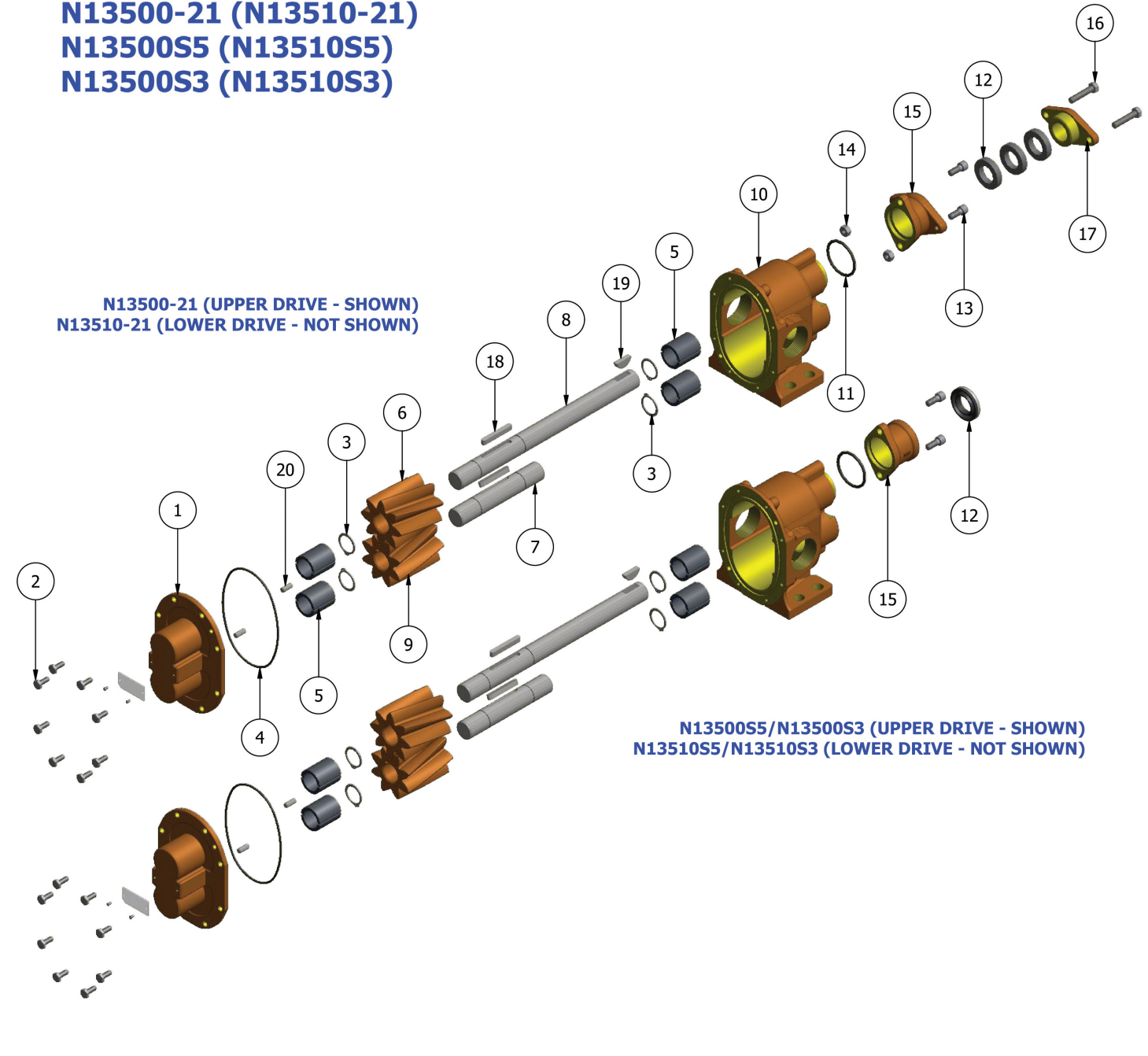
Exploded View

MODEL

N13500-21 (N13510-21)

N13500S5 (N13510S5)

N13500S3 (N13510S3)



	1	2	3	4	5	6	7	8	9	10	11	12a
	Cover	Screw	Snap Ring	O-Ring	Bearing	Drive Gear	Idle Shaft	Drive Shaft	Idle Gear	Body	O-Ring	Packing
Model	Qty. 1	Qty. 8	Qty. 4	Qty. 1	Qty. 4	Qty. 1	Qty. 1	Qty. 1	Qty. 1	Qty. 1	Qty. 1	Qty. 3
N13500-21	9333NN5N	5393	7651	9797-158	5108	9854	7653	5176	9855	9332NH7N	6515	7624
N13510-21										9332NH8N		
N13500S5										9332NH7N	9797-224	N/A
N13510S5										9332NH8N		
N13500S3										9332NH7N		
N13510S3										9332NH8N		

	12b	13	14	15	16	17	18	19	20	21	22	Repair Kit
	Lip Seal	Screw	Nut	Gland	Screw	Seal Adapter	Key	Key	Dowel Pin	Tag	Tag Screw	
Model	Qty. 1	Qty. 2	Qty. 2	Qty. 1	Qty. 2	Qty. 1	Qty. 2	Qty. 1	Qty. 2	Qty. 1	Qty. 2	
N13500-21	N/A	9905	8395	7451	6827	9904	5975	5576	8597	9344	9345	10643
N13510-21												
N13500S5	7262	N/A	N/A	9853	N/A	N/A	5975	5576	8597	9344	9345	12269
N13510S5												
N13500S3	6500											
N13510S3												

Repair kit contains 3, 4, 5, 6, 7, 8, 9, 12 & 18
For shaft and gear subassemblies only refer to kit 12021.