



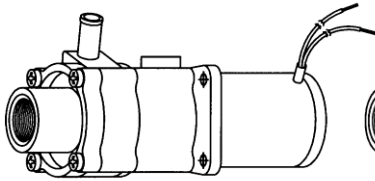
MARCH PUMPS

1819 PICKWICK AVE., GLENVIEW, IL 60026-1306, U.S.A
 PHONE: (847) 729-5300 - FAX: (847) 729-7062
 WWW.MARCHPUMP.COM

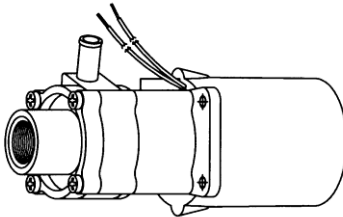
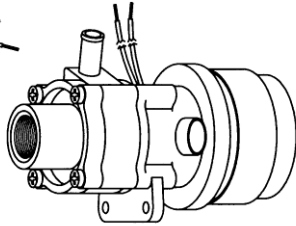
893

12 & 24 VDC

(893-03 12V) & (893-05 24V)
 NONSUBMERSIBLE
 BRUSH MOTOR

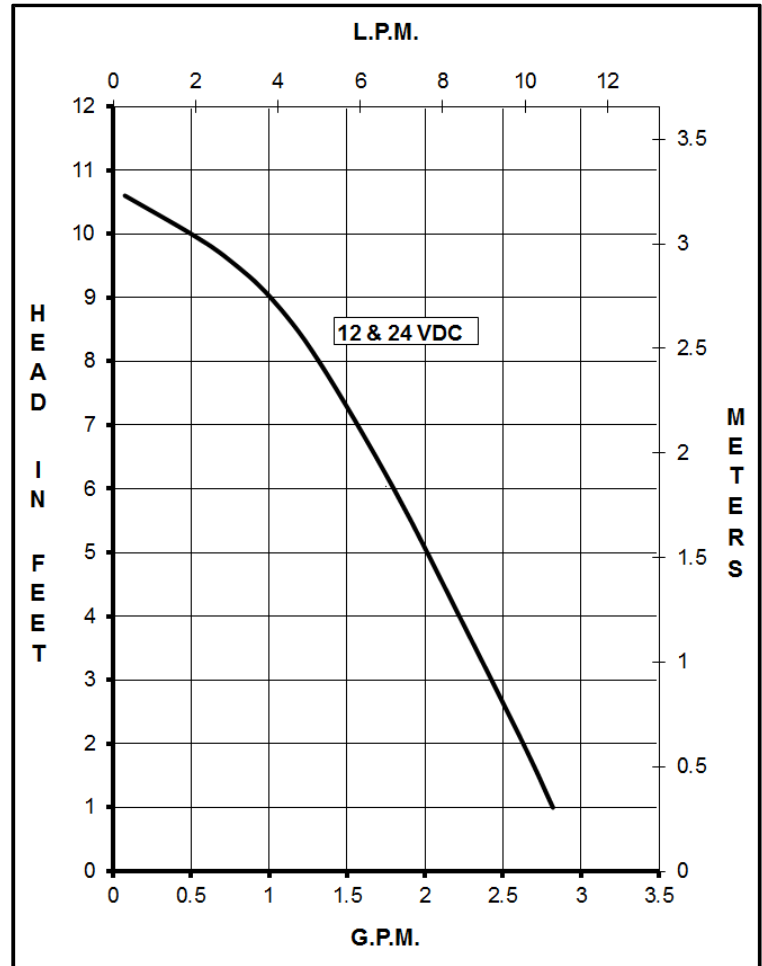
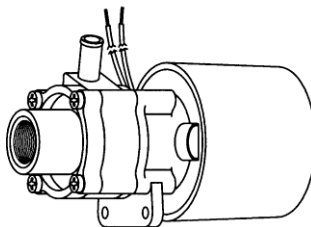


(893-07 12V) & (893-08 24V)
 NONSUBMERSIBLE
 BRUSHLESS MOTOR



(893-04 12V) & (893-06 24V)
 SUBMERSIBLE
 BRUSH MOTOR

(893-09 12V) & (893-10 24V)
 SUBMERSIBLE OR
 NONSUBMERSIBLE
 BRUSHLESS MOTOR

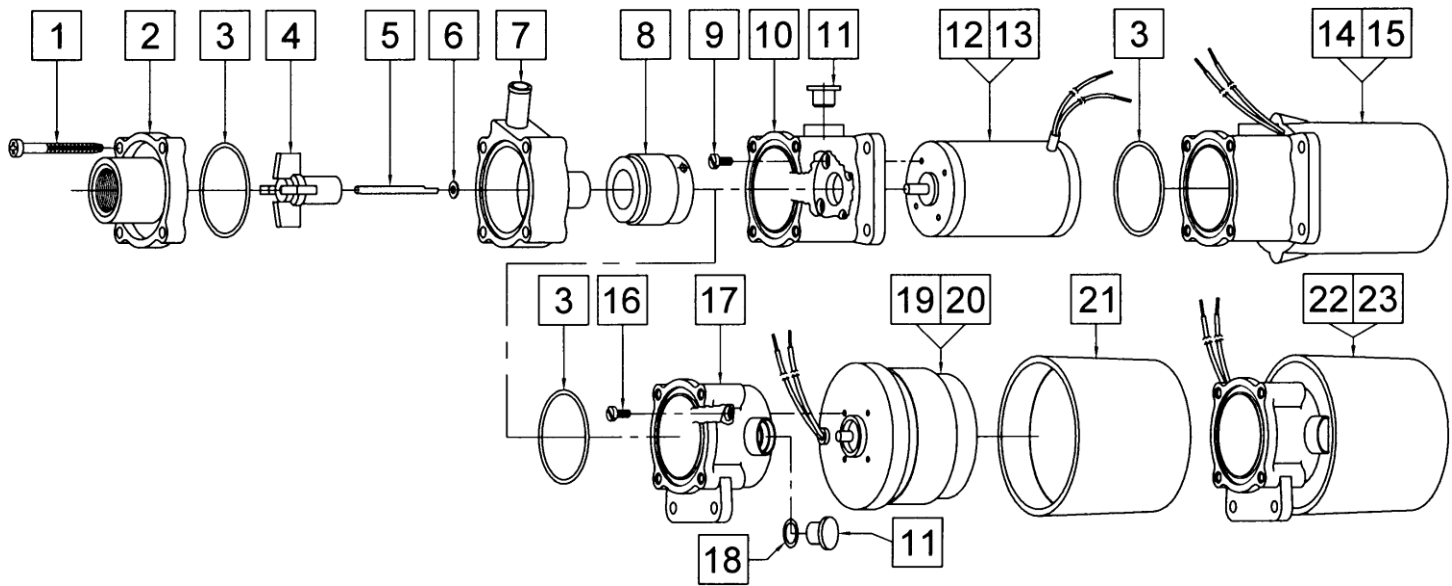


DESCRIPTION & OPERATION:

Series 893 are centrifugal magnetic drive pumps, eliminating the need for a shaft seal. Pumps can be serviced with a screwdriver. See the parts list for a breakdown of parts. Pumps are not self-priming, lack a suction lift, and thus require a **flooded suction**. Pumps **cannot be run dry** because the impeller requires the liquid being pumped for lubrication. Brushless motors must be operated within a restricted voltage range due to the electronics in the motor. For application assistance, contact March Pump.

SPECIFICATIONS		893-03	893-04	893-05	893-06	893-07	893-08	893-09	893-10
Max Flow		2.7 gpm - 11 lpm				2.7 gpm - 11 lpm			
Max Head		10.6 ft / 4.5 psi - 3.3 m				10.6 ft / 4.5 psi - 3.3 m			
Inlet - Outlet		3/8" FPT - 3/8" OD				3/8" FPT - 3/8" OD			
Max Internal Pressure		50 psi - 3.4 bar				50 psi - 3.4 bar			
Max Liquid Temperature		190°F open air	160°F sub	190°F open air	160°F sub	190°F open air	190°F open air, 130°F sub	190°F open air, 130°F sub	190°F open air, 130°F sub
		87°C open air	71°C sub	87°C open air	71°C sub	87°C open air	87°C open air, 54°C sub	87°C open air, 54°C sub	87°C open air, 54°C sub
Motor Type		DC Brush Motor				DC Brushless Motor			
Restricted Voltage Range	12V					7V to 14V			
	24V					12V to 28V			
Watts - Amps	12V	12 - 1				12 - 1	12 - 0.5	12 - 1	12 - 0.5
	24V			12 - 0.5					
Hp (Kw) - Rpm		1/150 (0.004) - 4000				1/150 (0.004) - 4000			
Electrical Connection		20" (50 cm) Leads - Red Lead is Positive / Blue Negative				16" (40 cm) Leads - Red Lead is Positive / Blue Negative			
Models		893-03 & 893-05		893-04 & 893-06		893-07 & 893-08		893-09 & 893-10	
Overall Pump Size (H x W x L)	Inches	2.52 x 2.19 x 5.01		2.79 x 2.66 x 5.11		2.96 x 2.25 x 4.28		2.96 x 2.45 x 4.46	
	cm	6.4 x 5.5 x 12.7		7.0 x 6.7 x 12.9		7.5 x 5.7 x 10.8		7.5 x 6.2 x 11.3	
Packed Weight		1.00 lbs / 0.45 kg		1.20 lbs / 0.54 kg		1.0 lbs / 0.45 kg		1.05 lbs / 0.47 kg	
Materials in Contact With Solution		Noryl, Nylon, Carbon/Teflon, Buna N, 316 Stainless Steel, Ceramic Magnet.							
		When pump is submerged the following additional materials are in contact: Epoxy, Delrin, & Motor Leads							

All specifications & data are based on pumping water & are intended as a guideline only. Specifications may vary with different motors.



PARTS LIST BRUSH 893's								
#	DESCRIPTION	MATERIAL	SIZE (Inches)	QTY.	893-03	893-04	893-05	893-06
1	Screws, Self-Tapping	Stainless	#7-19 x 1-7/16 Lg.	4			0115-0062-1000	
2	Cover	Noryl	3/8 FPT Inlet	1			0893-0004-1000	
3	"O" Ring	Buna N	1/16 CS x 1-7/16 OD	2		0115-0018-1000	0115-0018-1000	0115-0018-1000
4	Impeller	Nylon/Ceramic Magnet		1			0115-0008-0100	
5	Shaft	316 Stainless		1			0115-0032-1000	
6	Thrust Washer (Rear)	Carbon/Teflon		1			0115-0033-1000	
7	Rear Housing	Noryl	3/8 OD Outlet	1			0893-0003-1000	
8	Drive Magnet			1			0115-0101-0100	
9	Screws	Stainless	#4-40 x 1/4 Lg.	4	0893-0016-1000		0893-0016-1000	
10	Motor Bracket	Plastic		1	0893-0002-1000		0893-0002-1000	
11	Plug	Plastic		1	0125-0110-1000		0125-0110-1000	
12	Motor 12VDC Brush			1	0893-0001-1000			
13	Motor 24VDC Brush			1			0893-0022-1000	
14	Encapsulated Assy. 12VDC Brush			n/a	Not Available			
15	Encapsulated Assy. 24VDC Brush			n/a			Not Available	

PARTS LIST BRUSHLESS 893's								
#	DESCRIPTION	MATERIAL	SIZE (Inches)	QTY.	893-07	893-08	893-09	893-10
1	Screws, Self-Tapping	Stainless	#7-19 x 1-7/16 Lg.	4			0115-0062-1000	
2	Cover	Noryl	3/8 FPT Inlet	1			0893-0004-1000	
3	"O" Ring	Buna N	1/16 CS x 1-7/16 OD	2			0115-0018-1000	
4	Impeller	Nylon/Ceramic Magnet		1			0115-0008-0100	
5	Shaft	316 Stainless		1			0115-0032-1000	
6	Thrust Washer (Rear)	Carbon/Teflon		1			0115-0033-1000	
7	Rear Housing	Noryl	3/8 OD Outlet	1			0893-0003-1000	
8	Drive Magnet			1			0115-0101-0100	
11	Plug	Plastic		1	0125-0110-1000			
16	Screws	Stainless	0.118 x 0.5 x 0.236 Lg.	4	0893-0029-1000			
17	Motor Bracket	Plastic		1	0893-0035-0000			
18	"O" Ring	Viton	1/16 CS x 7/16 OD	1	0210-0008-1000			
19	Motor 12VDC Brushless			1	0893-0026-1000		0893-0026-1000	
20	Motor 24VDC Brushless			1		0893-0027-1000		0893-0027-1000
21	Motor Cap (Option)	Plastic		1	0893-0036-1000			
22	Submersible Assy. 12VDC Brushless			n/a			Not Available	
23	Submersible Assy. 24VDC Brushless			n/a			Not Available	

NOTE: Contact Factory for other materials and/or parts not listed.

LIMITED WARRANTY:

March pumps are warranted to the original user against defects in workmanship and materials under normal use with room temperature water. The brush type motors used on 03, 04, 05 & 06 have a rated brush life of 2,800 hours. They are warranted for 2,800 hours or 12 months, whichever comes first. The brushless motors used on 07, 08, 09, & 10 have a rated life of 50,000 hours and are warranted for 18 months from date of manufacture. For the complete warranty and to register online go to www.marchpump.com/warranty-registration