



MARCH PUMPS

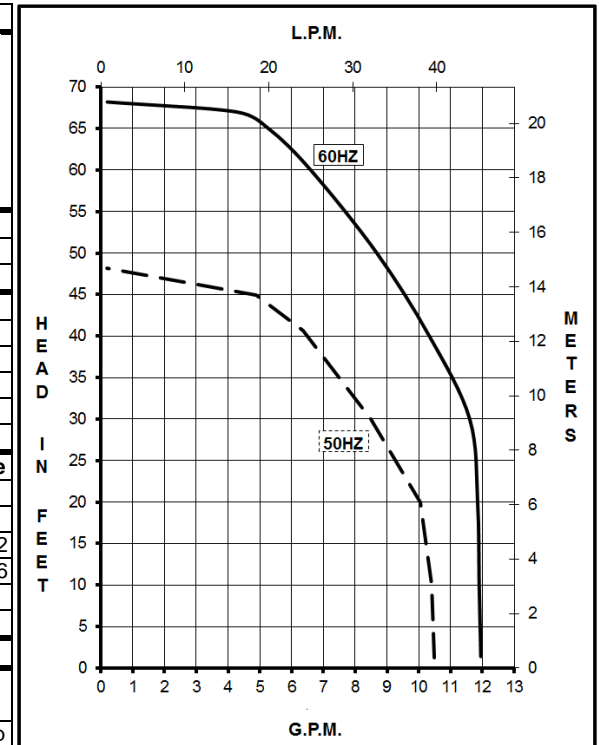
1819 PICKWICK AVE., GLENVIEW, IL 60026-1306, U.S.A
 PHONE: (847) 729-5300 - FAX: (847) 729-7062
 WWW.MARCHPUMP.COM

335-AP-MD

335-CP-MD

DESCRIPTION & OPERATION: Series 335 pumps are centrifugal magnetic drive pumps, eliminating the need for a shaft seal. Pumps can be serviced with an adjustable wrench. See the parts list for a breakdown of parts. Pumps are not self-priming, lack a suction lift, and thus require a **flooded suction**. Pumps **cannot be run dry** because the impeller requires the liquid being pumped for lubrication. The direction of motor rotation should be clockwise when facing the inlet of the pump. For liquids with a specific gravity greater than water, have a higher viscosity, or for elevated temperatures, a trimmed impeller may be necessary. For application assistance, contact March Pump.

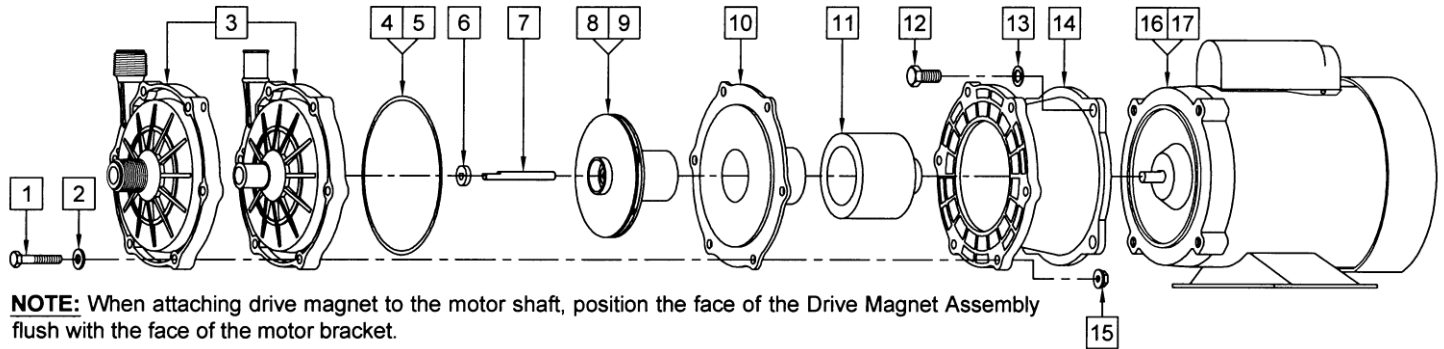
SPECIFICATIONS	335-AP-MD	335-CP-MD
Model Abbreviations	A: Smooth Inlet/Outlet	C: Threaded Inlet/Outlet
Max Flow	60Hz {12 gpm} - 50Hz {37.8 lpm}	
Max Head	60Hz (68 ft / 29.4 psi) - 50Hz (14.6 m)	
Inlet - Outlet	3/4" OD - 3/4" OD	3/4" MPT - 3/4" MPT
Internal Pressure	50 psi / 3.4 bar Max	
Liquid Temperature	190°F / 87°C Max	
Packed Weight	1 Phase {23.80 lbs / 10.79 kg} - 3 Phase {28.10 lbs / 12.74 kg}	
Overall Size (H x W x L)	1Ph 7.79" x 7.74" x 13.67" - 19.7 cm x 19.6 cm x 34.7 cm	3Ph 7.44" x 9.25" x 14.49" - 18.8 cm x 23.4 cm x 36.8 cm
	60Hz - 1 Phase	60Hz - 3 Phase 50Hz - 1 Phase 50Hz - 3 Phase
Motor Type	TEFC: Totally Enclosed Fan Cooled	
Rating / Duty	U.L. listed motor / Continuous	
Watts - Amps	(115V) 452 - 4.4 (230V) 425 - 1.2	(115V) 290 - 4.4 (190V) 350 - 1.2 (230V) 452 - 2.2 (460V) 425 - 0.6 (230V) 290 - 2.2 (380V) 350 - 0.6
Hp / Kw - Rpm	1/3 - 3450	1/3 - 3450 0.248 - 2850 0.186 - 2850
Electrical Connection	Conduit Box	



Materials in Contact with Solution: Polypropylene, Ceramic, Viton

All info is based on pumping water & is intended as a guideline only. Specifications may vary with different motors.

LIMITED WARRANTY: March pumps are guaranteed only against defects in workmanship or materials for a period of one year from date of manufacture pumping water. For the complete warranty and to register online go to www.marchpump.com/warranty-registration



NOTE: When attaching drive magnet to the motor shaft, position the face of the Drive Magnet Assembly flush with the face of the motor bracket.

#	DESCRIPTION	MATERIAL	335-AP-MD	335-CP-MD	QTY.	335-AP-MD	335-CP-MD
1	Screw	Stainless	1/4-20 x 1-1/2 Lg.		6	0153-0011-1000	
2	Washer	Stainless	1/4 ID x 5/8 OD		6	0157-0023-1000	
3	Front Housing w/Inlet & Outlet	Polypropylene	3/4 OD	3/4 MPT	1	0335-0003-1000	0335-0002-1000
4	"O" Ring	Viton	1/8 CS x 5 OD		1	0335-0009-1000	
5	"O" Ring (Option)	Viton/Teflon			1	0335-0016-1000	
6	Thrust Washer	Ceramic			1	0821-0079-1000	
7	Shaft	Ceramic			1	0130-0024-1000	
8	Impeller	Polypropylene			1	0335-0005-0200	
9	Impeller w/Carbon Bushing (Option)	Polypropylene			1	0335-0005-0400	
10	Rear Housing w/Ceramic Thrust Washer	Polypropylene			1	0335-0004-0100	
11	Drive Magnet				1	0151-0061-0200	
12	Screw	Stainless	3/8-16 x 1 Lg.		4	0155-0017-1000	
13	Washer	Stainless	3/8 ID x 5/8 OD		4	0155-0019-1000	
14	Motor Bracket	Plastic			1	0335-0010-1000	
15	Hex Nut	Stainless	1/4-20		6	0156-0053-1000	
16	Motor, TEFC, 115/230V, 50/60Hz, 1 Phase				1	0151-0015-1000	
17	Motor, TEFC, 230/460V, 50/60Hz, 3 Phase (Not Shown)				1	0151-0039-1000	

Explosion proof and special voltage motors are available upon special order.

NOTE: Contact Factory for other materials and/or parts not listed. All dimensions are in inches unless otherwise marked.

0335-0011-1000 R7