



MARCH PUMPS

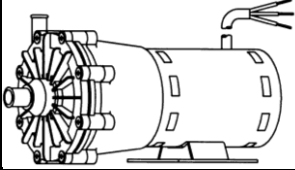
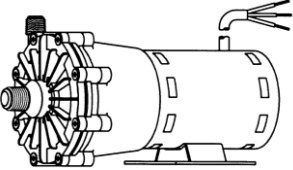
1819 PICKWICK AVE., GLENVIEW, IL 60026-1306, U.S.A
 PHONE: (847) 729-5300 - FAX: (847) 729-7062
 WWW.MARCHPUMP.COM

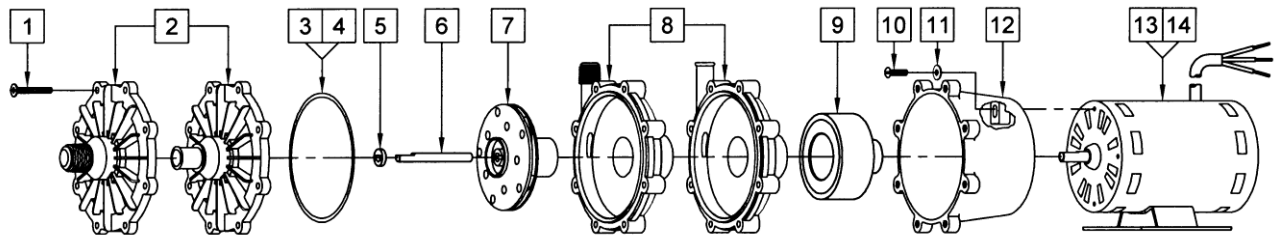
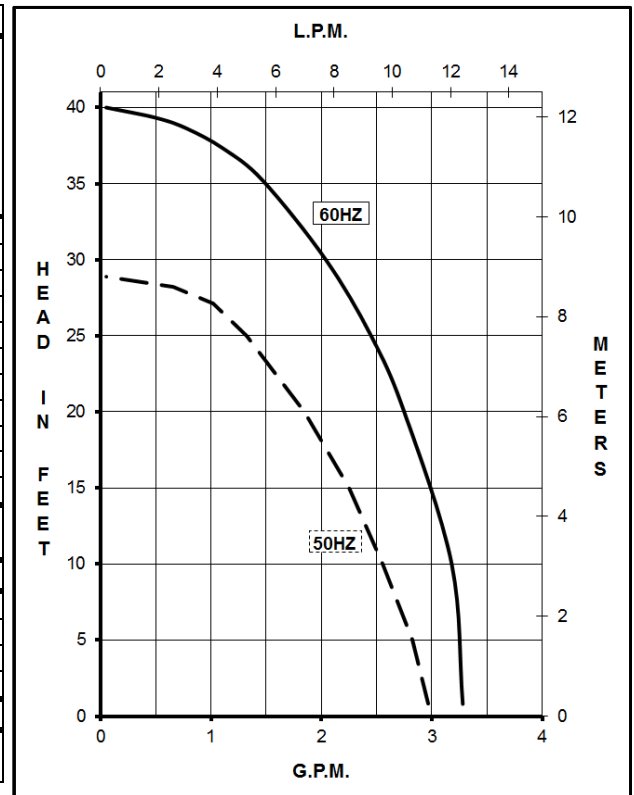
320-AP-MD

320-CP-MD

DESCRIPTION & OPERATION: Series 320 pumps are centrifugal magnetic drive pumps, eliminating the need for a shaft seal. Pumps can be serviced with a screwdriver. See the parts list for a breakdown of parts. Pumps are not self-priming, lack a suction lift, and thus require a **flooded suction**. Pumps **cannot be run dry** because the impeller requires the liquid being pumped for lubrication. The direction of motor rotation should be clockwise when facing the inlet of the pump. For liquids with a specific gravity greater than water, have a higher viscosity, or for elevated temperatures, a trimmed impeller may be necessary. For application assistance, contact March Pump.

LIMITED WARRANTY: March pumps are guaranteed only against defects in workmanship or materials for a period of one year from date of manufacture pumping water. For the complete warranty and to register online go to www.marchpump.com/warranty-registration

SPECIFICATIONS		320-AP-MD	320-CP-MD		
					
Model Abbreviations		A: Smooth Inlet/Outlet	C: Threaded Inlet/Outlet		
Max Flow		60Hz {3.3 gpm} - 50Hz {11.3 lpm}			
Max Head		60Hz {40 ft / 17.3 psi} - 50Hz {8.8 m}			
Inlet - Outlet		5/8" OD - 1/2" OD	1/2" MPT - 3/8" MPT		
Internal Pressure		50 psi / 3.4 bar Max			
Liquid Temperature		190°F / 87°C Max			
Packed Weight		7.90 lbs / 3.58 kg	7.95 lbs / 3.60 kg		
Overall Pump Dimensions (H x W x L)	115V	5.01" x 5.33" x 9.99"	5.01" x 5.37" x 9.99"		
		12.7 cm x 13.5 cm x 25.3 cm	12.7 cm x 13.6 cm x 25.3 cm		
	230V	5.01" x 5.32" x 10.30"	5.01" x 5.32" x 10.30"		
		12.7 cm x 13.5 cm x 26.1 cm	12.7 cm x 13.5 cm x 26.1 cm		
ELECTRICAL		Motors are available in different electrical configurations such as 115V 50/60Hz, or 230V 50/60Hz, 1 Phase, Air Cooled.			
		60Hz - 115V	60Hz - 230V	50Hz - 115V	50Hz - 230V
Rating / Duty		U.L. listed motor / Continuous			
Watts - Amps		172 - 1.75	165 - 0.75	121 - 1.75	126 - 0.75
Hp / Kw - Rpm		1/12 - 3450		0.062 - 2850	
Electrical Connection		3 ft (0.9m) Cord			
Materials in Contact with Solution: Polypropylene, Ceramic, Viton					
All specifications & data are based on pumping water & are intended as a guideline only. Specifications may vary with different motors.					



NOTE: When attaching drive magnet to the motor shaft, position the face of the drive magnet 3/32 inch below the face of the motor bracket.

#	DESCRIPTION	MATERIAL	SIZE (Inches)		QTY.	PART #	
			320-AP-MD	320-CP-MD		320-AP-MD	320-CP-MD
1	Screw	Stainless	#8-32 x 1-1/4 Lg.		8	0320-0008-1000	0320-0008-1000
2	Cover	Polypropylene	5/8 OD Inlet	1/2 MPT Inlet	1	0320-0003-1000	0320-0011-1000
3	"O" Ring	Viton	0.118 CS x 3.622 ID		1	0320-0006-1000	
4	"O" Ring (Option)	EPDM			1	0320-0012-1000	
5	Thrust Washer	Ceramic			1	0130-0028-1000	
6	Shaft	Ceramic			1	0130-0024-1000	
7	Impeller	Polypropylene			1	0320-0004-0300	
8	Rear Housing w/Thrust Washer	Polypropylene/Ceramic	1/2 OD Smooth	3/8 MPT Outlet	1	0320-0002-0100	0320-0010-0100
9	Drive Magnet				1	0130-0043-0200	
10	Screw	Stainless	#8-32 x 5/8 Lg.		4	0618-0027-1000	
11	Washer	Stainless	#8		4	0135-0016-1000	
12	Motor Bracket	Plastic			1	0320-0007-0100	
13	Motor 115V, 50/60Hz				1	0145-0012-1000	
14	Motor 230V, 50/60Hz				1	0145-0029-1000	

NOTE: Contact Factory for other materials and/or parts not listed

0320-0013-1000 R10