



MARCH PUMPS

1819 PICKWICK AVE., GLENVIEW, IL 60026-1306, U.S.A
 PHONE: (847) 729-5300 - FAX: (847) 729-7062
 WWW.MARCHPUMP.COM

830

HOT WATER PUMPS

DESCRIPTION & OPERATION:

March 830 hot water booster series are centrifugal magnetic drive pumps built to handle liquid transfer in heating and cooling operations. Contact the factory for application assistance. Pumps are not self-priming, lack a suction lift, and thus require a flooded suction. Pumps cannot be run dry.

INSTALLATIONS:

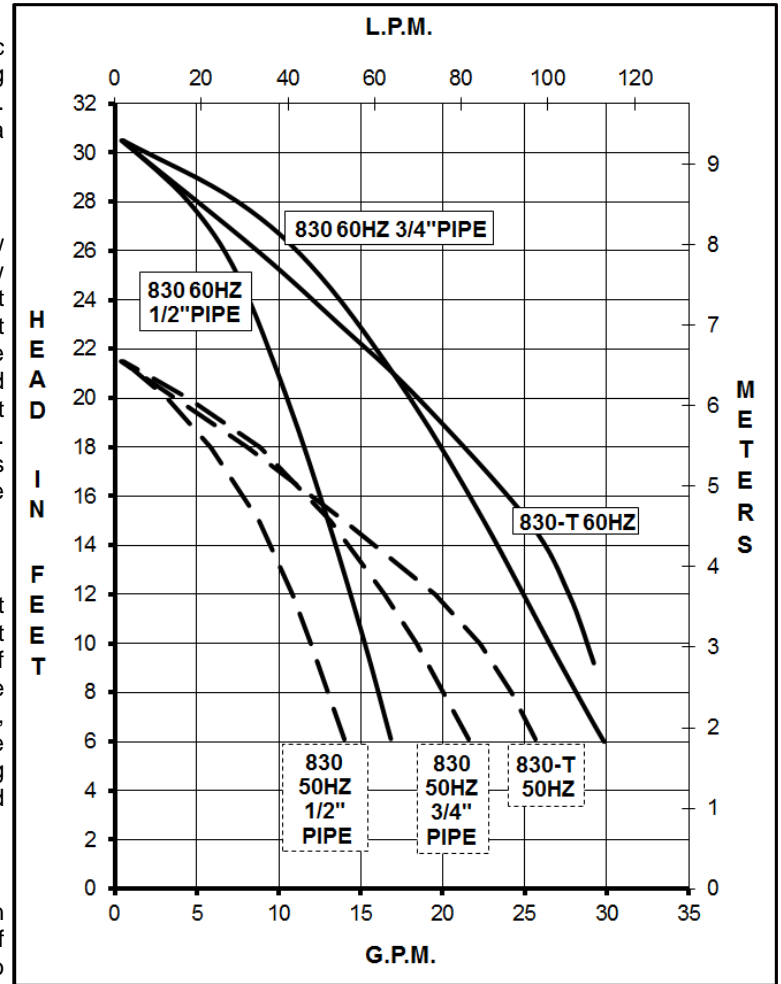
Pumps should be installed with the pump housing arrow pointing in the direction of flow within the system. If the arrow indicating flow is not in the direction required, remove the socket head housing screws holding the housing to the motor bracket and rotate the housing assembly as required. Replace the screws and tighten. The pump is composed of a wet end assembly which can be separated by unscrewing the socket head housing screws. The pump will then separate into 2 parts. The liquid will be contained within the wet end assembly unless the flat head connecting screws on the rear housing are loosened.

DISASSEMBLY & REASSEMBLY:

The motor can be removed from the wet end assembly without draining the liquid from the system. To do so remove four socket head housing screws and slide the motor assembly away. If parts inside the wet end assembly must be removed, isolate the pump or drain the system. When the system is drained and cool, remove the four flat head connecting screws from the rear of the housing. The rear housing can now be removed. Remaining pump parts can be removed. Replace any worn or damaged parts. Replace the gasket anytime the rear housing is removed.

LIMITED WARRANTY:

March pumps are guaranteed only against defects in workmanship or materials for a period of one year from date of manufacture pumping water. For the complete warranty and to register online go to www.marchpump.com/warranty-registration

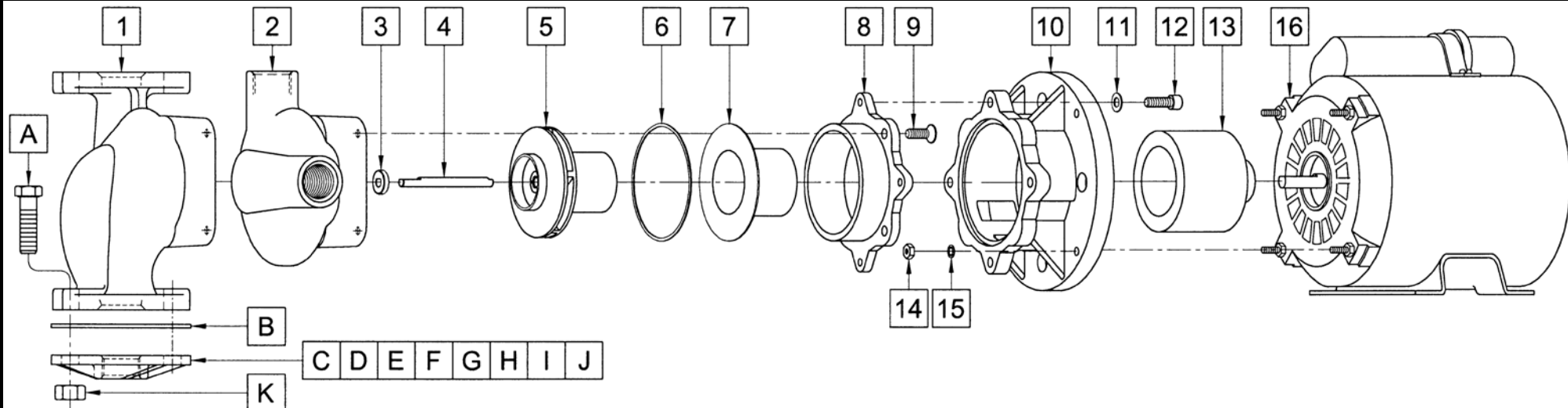


GENERAL SAFETY INFORMATION:

Follow all local safety codes & the Occupational Safety and Health Act (OSHA). Make certain that the power source conforms to the requirements of your equipment. Always disconnect power source before performing any work on or near the electric motor. Caution must be exercised to relieve any pressure in the system & in draining hot liquid from the pump or the system. March cannot recommend the 830 Series out of bronze where the liquid is used for human consumption per California Law due to the presence of lead.

SPECIFICATIONS	830-BR		830-CI		830-BR-T		830-CI-T		
Model Abbreviations	BR: Bronze, CI: Cast Iron, T: Threaded				BR: Bronze, CI: Cast Iron, T: Threaded				
Max Flow	60Hz {15 gpm} - 50Hz {52.9 lpm}				60Hz {29 gpm} - 50Hz {94.6 lpm}				
Max Head	60Hz {30.5 ft / 13.2 psi} - 50Hz {6.5 m}				60Hz {30.5 ft / 13.2 psi} - 50Hz {6.5 m}				
Inlet - Outlet	Flange - Flange				3/4" FPT - 3/4" FPT				
Max Internal Pressure	150 psi / 10 bar				150 psi / 10 bar				
Max Liquid Temperature	250°F / 121°C				250°F / 121°C				
Overall Size (H x W x L)	6.93" x 5.81" x 12.25" - 17.6 cm x 14.7 cm x 31.1 cm				6.93" x 5.84" x 11.84" - 17.6 cm x 14.8 cm x 30.0 cm				
Packed Weight	21.5 lbs / 10 kg		21 lbs / 9.5 kg		19 lbs / 8.5 kg		18.5 lbs / 8 kg		
	60Hz - 115V	60Hz - 230V	50Hz - 115V	50Hz - 230V	60Hz - 115V	60Hz - 230V	50Hz - 115V	50Hz - 230V	
Motor Type	Air Cooled				Air Cooled				
1 Phase	Watts - Amps	376 - 2.7	376 - 1.4	266 - 2.9	266 - 1.4	395 - 2.7	395 - 1.4	274 - 2.9	274 - 1.4
	Hp / Kw - Rpm	1/5 - 3450		0.149 - 2850		1/5 - 3450		0.149 - 2850	
Electrical Connection	Junction Box				Junction Box				
All specifications & data are based on pumping water & are intended as a guideline only. Specifications may vary with different motors.									

PARTS LIST



#	DESCRIPTION	MATERIAL	Size (Inches)	QTY.	830 BR	830 CI	830 BR-T	830 CI-T
1	Pump Housing	Bronze	Flanged	1	0821-0064-0000			
		Cast Iron		1		0821-0025-0001		
2	Pump Housing	Bronze	3/4 Threaded	1			0821-0075-0000	
		Cast Iron		1				0821-0080-0001
3	Thrust Washer	Ceramic		1		0821-0079-1000		
4	Shaft	Stainless		1		0821-0036-1000		
5	Impeller w/Bushing	Ryton/Teflon/Carbon	2.812 Dia.	1		0175-0073-0200		
6	Gasket	Nitrile/Fibre	2.843 ID x 0.047 Thick	1		1043-0002-1000		
7	Rear Housing	Stainless		1		0821-0035-0100		
8	Housing Connecting Ring	Aluminum		1		0821-0044-0000		
9	Flat Head Connecting Screw	Steel	1/4-20 x 3/4 Lg.	4		1043-0009-1000		
10	Motor Bracket	Plastic		1		0175-0027-1000		
11	Washer	Stainless	1/2 OD	4		0155-0021-1000		
12	Socket Head Housing Screw	Steel	1/4-20 x 3/4 Lg.	4		0804-0052-1000		
13	Drive Magnet			1		0151-0061-0200		
14	Hex Nut	Brass (Nickel Plated)	#8-32	4		0410-0039-1000		
15	Lock Washer	Stainless	#8	4		0620-0010-1000		
16	Motor, 115V/230V, 50/60Hz			1		0175-0087-1000		

OPTION PARTS FOR ALL MODELS

#	DESCRIPTION	MATERIAL	SIZE (Inches)	QTY.	PART #	#	DESCRIPTION	MATERIAL	SIZE (Inches)	QTY.	PART #
A	Hex Head Screw	Steel	7/16-14 x 1-1/2 Lg.	4	0804-0054-1000	G	Flange	Steel	3/4	2	0804-0047-0000
B	Gasket, Flange	EPDM		1	0821-0105-1000	H	Flange	Steel	1	2	0821-0045-0000
C	Flange	Bronze	3/4	2	0821-0069-0000	I	Flange	Steel	1-1/4	2	0821-0048-0000
D	Flange	Bronze	1	2	0821-0065-0000	J	Flange	Cast Iron	1-1/2	2	0821-0049-0000
E	Flange	Bronze	1-1/4	2	0821-0072-0000	K	Hex Nut	Steel	7/16-14	4	0804-0055-1000
F	Flange	Bronze	1-1/2	2	0821-0066-0000						

NOTE: Contact Factory for other materials and/or parts not listed.

0175-0028-1000 R6