



MARCH PUMPS

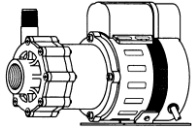
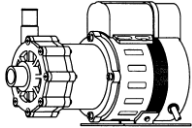
1819 PICKWICK AVE., GLENVIEW, IL 60026-1306, U.S.A
 PHONE: (847) 729-5300 - FAX: (847) 729-7062
 WWW.MARCHPUMP.COM

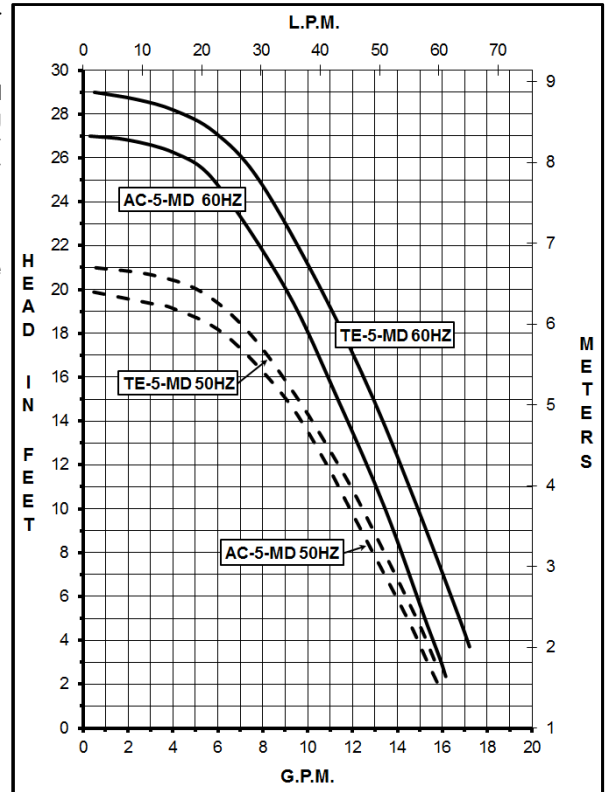
AC-5C-MD, TE-5C-MD
AC-5A-MD, TE-5A-MD
TE-5K-MD, TE-5S-MD

DESCRIPTION: Series 5 are centrifugal magnetic drive pumps, eliminating the need for a shaft seal. All are serviceable with a screwdriver.

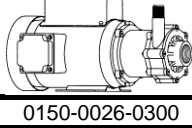
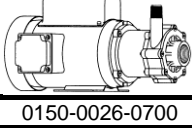
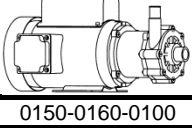
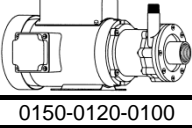
OPERATION: Pumps are not self-priming, lack a suction lift, and thus require a **flooded suction**. Pumps **cannot be run dry** because the impeller requires the liquid being pumped for lubrication. For liquids with a specific gravity greater than water, have a higher viscosity, or for elevated temperatures, a trimmed impeller may be necessary. For application assistance, contact March Pump.

ELECTRICAL: TE Models are dual voltage 115 Volt / 230 Volt and have a conduit box. AC Models are either 115 Volt or 230 Volt and have a 3 ft (0.9 m) Cord. All models have U.L. listed motors which are rated for continuous duty.

Model Abbreviations: C: Threaded Inlet/Outlet, A: Smooth Inlet/Outlet, AC: Air Cooled		AC-5C-MD				AC-5A-MD			
MODELS									
	Product #	0150-0026-0100				0150-0170-0100			
	115 V	0150-0026-0100				0150-0170-0100			
	230 V	0150-0136-0100				0150-0170-0200			
UNITS		60 Hz		50 Hz		60 Hz		50 Hz	
Max Flow		17 gpm		60 lpm		17 gpm		60 lpm	
Max Head		27 ft / 11.7 psi		6 m		27 ft / 11.7 psi		6 m	
Inlet - Outlet		1" FPT - 1/2" MPT				1" OD - 3/4" OD			
Max Internal Pressure		50 psi / 344 kPa				50 psi / 344 kPa			
Max Liquid Temperature		190 °F / 87 °C				190 °F / 87 °C			
Packed Weight		8.55 lbs / 3.87 kg				8.55 lbs / 3.87 kg			
ELECTRICAL 60 Hz		W	A	Hp	Rpm	W	A	Hp	Rpm
	115 V	234	2.1	1/8	3450	234	2.1	1/8	3450
	230 V	250	1.0	1/8	3450	250	1.0	1/8	3450
ELECTRICAL 50 Hz		W	A	kW	Rpm	W	A	kW	Rpm
	115 V	214	2.1	0.093	2850	214	2.1	0.093	2850
	230 V	223	1.0	0.093	2850	223	1.0	0.093	2850
OVERALL SIZE		Height	Width	Length		Height	Width	Length	
		6.19"	4.52"	9.27"		6.19"	4.52"	9.83"	
		15.7 cm	11.4 cm	23.5 cm		15.7 cm	11.4 cm	24.9 cm	
Materials in Contact with Solution:		Polypropylene, Ceramic, Buna-N & Ceramic Magnet				Polypropylene, Ceramic, Buna-N & Ceramic Magnet			

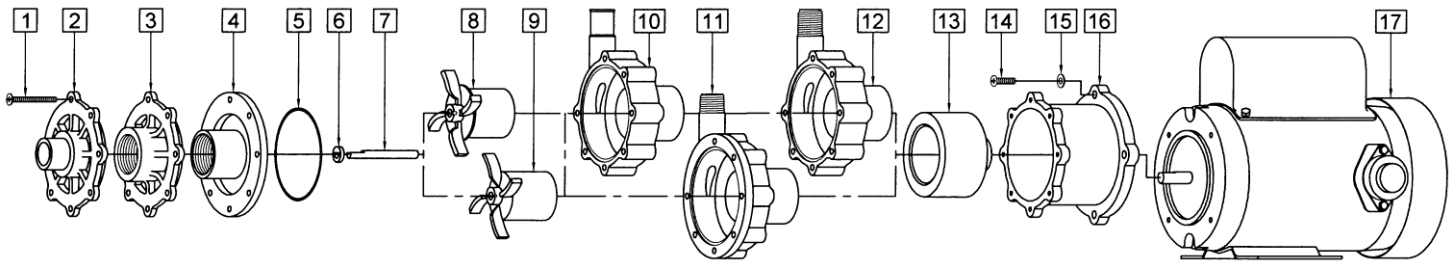


LIMITED WARRANTY: March pumps are guaranteed only against defects in workmanship or materials for a period of one year from date of manufacture pumping water. For the complete warranty and to register online go to www.marchpump.com/warranty-registration

Model Abbreviations: C/K: Threaded Inlet/Outlet, A: Smooth Inlet/Outlet, K: Kynar, TE: Totally Enclosed Fan Cooled		TE-5C-MD				TE-5K-MD				TE-5A-MD				TE-5S-MD			
MODELS																	
	Product #	0150-0026-0300				0150-0026-0700				0150-0160-0100				0150-0120-0100			
UNITS		60 Hz		50 Hz		60 Hz		50 Hz		60 Hz		50 Hz		60 Hz		50 Hz	
Max Flow		18 gpm		60.5 lpm		18 gpm		60.5 lpm		18 gpm		60.5 lpm		18 gpm		60.5 lpm	
Max Head		29 ft / 12.5 psi		6.3 m		29 ft / 12.5 psi		6.3 m		29 ft / 12.5 psi		6.3 m		29 ft / 12.5 psi		6.3 m	
Inlet - Outlet		1" FPT - 1/2" MPT				1" FPT - 1/2" MPT				1" OD - 3/4" OD				1" FPT - 1/2" MPT			
Max Internal Pressure		50 psi / 344 kPa				75 psi / 517 kPa				50 psi / 344 kPa				200 psi / 1378 kPa			
Max Liquid Temperature		190 °F / 87 °C				200 °F / 93 °C				190 °F / 87 °C				250 °F / 121 °C			
Packed Weight		22.50 lbs / 10.20 kg				22.70 lbs / 10.29 kg				22.50 lbs / 10.20 kg				25.75 lbs / 11.68 kg			
ELECTRICAL 60 Hz		W	A	Hp	Rpm	W	A	Hp	Rpm	W	A	Hp	Rpm	W	A	Hp	Rpm
	115 V	255	2.10	0.2	3450	255	2.10	0.2	3450	255	2.10	0.2	3450	255	2.10	0.2	3450
	230 V	255	1.05	0.2	3450	255	1.05	0.2	3450	255	1.05	0.2	3450	255	1.05	0.2	3450
ELECTRICAL 50 Hz		W	A	kW	Rpm	W	A	kW	Rpm	W	A	kW	Rpm	W	A	kW	Rpm
	110 V	177	2.2	0.149	2850	177	2.2	0.149	2850	177	2.2	0.149	2850	177	2.2	0.149	2850
	220 V	177	1.1	0.149	2850	177	1.1	0.149	2850	177	1.1	0.149	2850	177	1.1	0.149	2850
OVERALL SIZE		Height	Width	Length		Height	Width	Length		Height	Width	Length		Height	Width	Length	
		7.19"	8.02"	13"		7.19"	8.02"	13"		7.19"	8.02"	13.56"		7.19"	8.02"	13.31"	
		18.2 cm	20.3 cm	33.0 cm		18.2 cm	20.3 cm	33.0 cm		18.2 cm	20.3 cm	34.4 cm		18.2 cm	20.3 cm	33.8 cm	
Materials in Contact with Solution:		Polypropylene, Viton, Ceramic				Kynar/Carbon Filled, Viton, Ceramic				Polypropylene, Ceramic, Viton				316 Stainless Steel, Viton, Ceramic, Carbon			

All specifications/values are based on pumping water and are intended as a guideline only. Values may vary with different motors.

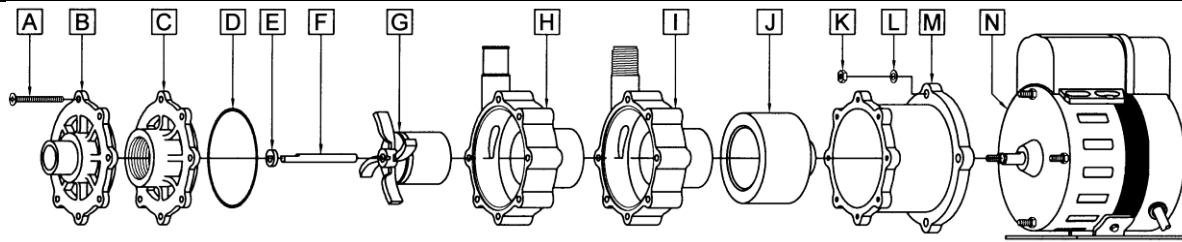
PARTS LIST



When attaching the Drive Magnet to motor shaft, position the face of the Drive Magnet 3/32 inch below the face of the Motor Bracket.

#	DESCRIPTION	MATERIAL	SIZE (Inches)	QTY.	TE-5C-MD	TE-5A-MD	TE-5K-MD	TE-5S-MD
1	Screw	Stainless	#8-32 x 1-3/4 Lg.	7			0150-0021-1000	
2	Cover	Polypropylene	1 OD Inlet	1		0150-0150-1000		
3	Cover	Polypropylene	1 FPT Inlet	1	0150-0032-1000			
4	Cover	Kynar	1 FPT Inlet	1			0150-0124-1000	
4	Cover	316 Stainless	1 FPT Inlet	1				0150-0111-0000
5	"O" Ring	Viton	1/16 CS x 3 OD	1			0135-0023-1000	
5	"O" Ring (Option)	Viton/Teflon	0.070 CS x 3-1/8 OD	1			0150-0171-1000	
5	"O" Ring (Option)	Buna N	1/16 CS x 3 OD	1			0135-0007-1000	
6	Thrust Washer	Ceramic		1			0130-0028-1000	
7	Shaft	Ceramic		1			0130-0024-1000	
8	Impeller	Polypropylene		1	0150-0098-0200			
	Impeller (Option)	Polypropylene w/Carbon Bushing		1	0150-0098-0300			
	Impeller (Option)	Polypropylene w/Mica Teflon Bushing		1	0150-0098-0500			
	Impeller	Kynar		1			0150-0125-0200	
	Impeller (Option)	Kynar w/Carbon Bushing		1			0150-0125-0300	
9	Impeller	316 Stainless w/Carbon Bushing		1				0150-0114-0400
	Impeller (Option)	316 Stainless w/Mica Teflon Bushing		1				0150-0114-0600
	Impeller (Option)	316 Stainless w/Mica Teflon Bushing		1				0150-0114-0600
NOTE: All Impellers (#'s 8 & 9) are encapsulated and can be used in the TE-5S-MD.								
10	Rear Housing	Polypropylene w/Ceramic Thrust Washer	3/4 OD Outlet	1		0150-0159-0100		
11	Rear Housing	316 Stainless	1/2 MPT Outlet	1				0150-0110-0000
12	Rear Housing	Polypropylene w/Ceramic Thrust Washer	1/2 MPT Outlet	1	0150-0031-0100			
	Rear Housing	Kynar w/Ceramic Thrust Washer	1/2 MPT Outlet	1			0150-0123-0100	
13	Drive Magnet			1			0150-0176-0300	
14	Screw	Stainless	#10-32 x 3/4 Lg.	4			0150-0050-1000	
15	Washer	Stainless	#10	4			0150-0051-1000	
16	Motor Bracket	Plastic		1			0150-0070-0100	
17	Motor, TEFC, 115/230V, 50/60Hz			1			0150-0090-1000	

Explosion proof & special voltage motors are available for TE-5C-MD, TE-5A-MD, TE-5K-MD, & TE-5S-MD upon special order.



#	DESCRIPTION	MATERIAL	SIZE (Inches)	QTY.	AC-5C-MD	AC-5A-MD
A	Screw	Stainless	#8-32 x 1-3/4 Lg.	7		0150-0021-1000
B	Cover	Polypropylene	1 FPT Inlet	1	0150-0032-1000	
C	Cover	Polypropylene	1 OD Inlet	1		0150-0150-1000
D	"O" Ring	Buna N	1/16 CS x 3 OD	1		0135-0007-1000
D	"O" Ring (Option)	Viton	1/16 CS x 3 OD	1		0135-0023-1000
D	"O" Ring (Option)	Viton/Teflon	0.070 CS x 3-1/8 OD	1		0150-0171-1000
E	Thrust Washer	Ceramic		1		0130-0028-1000
F	Shaft	Ceramic		1		0130-0024-1000
G	Impeller	Polypropylene w/Ceramic Magnet		1		0150-0030-0100
G	Impeller (Option)	Polypropylene w/Ceramic Magnet	Carbon Bushing	1		0150-0030-0700
G	Impeller (Option)	Polypropylene w/Ceramic Magnet	Mica Teflon Bushing	1		0150-0030-0800
H	Rear Housing	Polypropylene w/Ceramic Thrust Washer	3/4 OD Outlet	1		0150-0159-0100
I	Rear Housing	Polypropylene w/Ceramic Thrust Washer	1/2 MPT Outlet	1	0150-0031-0100	
J	Drive Magnet			1		0150-0081-0100
K	Nut (Hex)	Stainless	#10-32	4		0625-0024-1000
L	Washer	Stainless	#10	4		0802-0006-1000
M	Motor Bracket	Plastic		1		0150-0070-0100
N	Motor, 115V, 50/60Hz			1		0150-0027-1000
	Motor, 230V, 50/60Hz			1		0150-0040-1000

NOTE: Contact Factory for other materials and/or parts not listed.

0150-0060-1000 R26