



MARCH PUMPS

1819 PICKWICK AVE., GLENVIEW, IL 60026-1306, U.S.A
 PHONE: (847) 729-5300 - FAX: (847) 729-7062
 WWW.MARCHPUMP.COM

MDX-1/2, MDX-3 1/2 MDX-5/8, MDX-3 5/8

DESCRIPTION:

Series MDX are centrifugal magnetic drive pumps, eliminating the need for a shaft seal. Pumps can be serviced with a screwdriver. See the parts list for a breakdown of parts.

OPERATION:

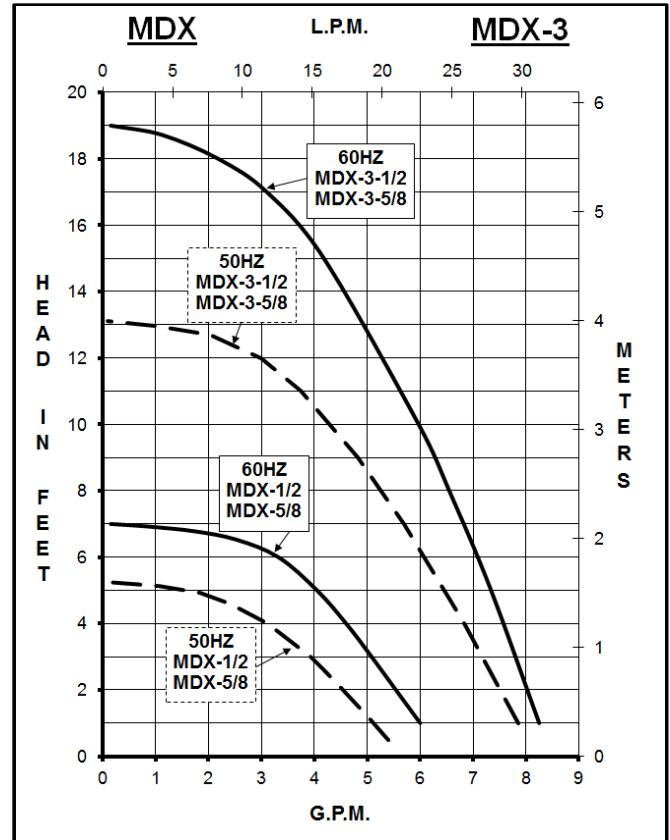
Pumps are not self-priming, lack a suction lift, and thus require a flooded suction. Pumps cannot be run dry because the impeller requires the liquid being pumped for lubrication. For application assistance, contact March Pump.

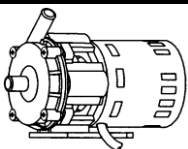
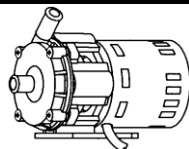
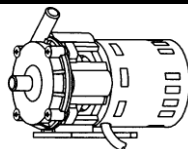
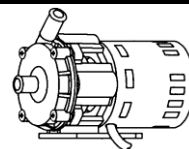
ELECTRICAL:

All models have air cooled motors that are U.L. listed and are rated for continuous duty. Motors have a 3 foot (0.9 m) cord. Air cooled motors are separate voltage 115 Volt 60 Hz, 115 Volt 50/60 Hz, or 230 Volt 50/60 Hz. Motors are not dual voltage.

LIMITED WARRANTY:

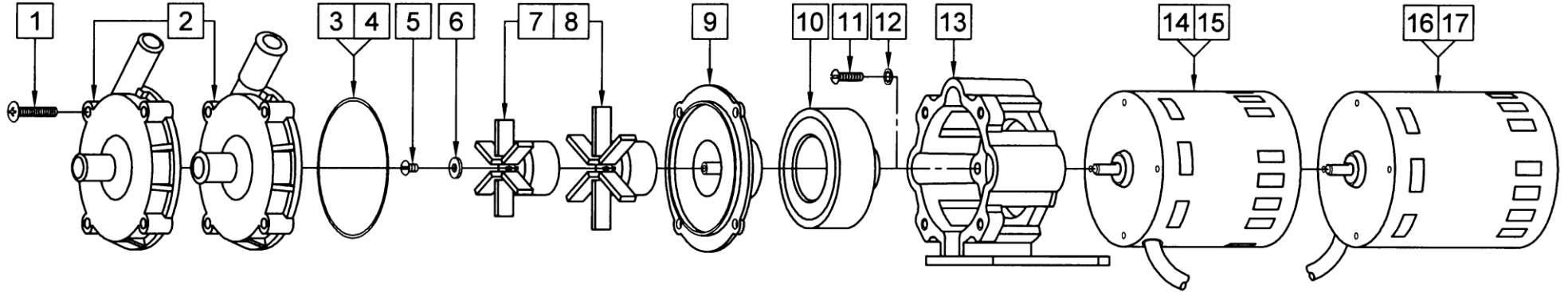
March pumps are guaranteed only against defects in workmanship or materials for a period of one year from date of manufacture pumping water. For the complete warranty and to register online go to www.marchpump.com/warranty-registration



MODELS	MDX-1/2				MDX-5/8				MDX-3-1/2				MDX-3-5/8				
																	
Product #	115 V	0135-0006-0200				0135-0006-0100				0135-0006-0400				0135-0006-0300			
	230 V	0135-0163-0100				0135-0163-0200				0135-0163-0300				0135-0163-0400			
UNITS	60 Hz	50 Hz			60 Hz	50 Hz			60 Hz	50 Hz			60 Hz	50 Hz			
Max Flow	6 gpm	22 lpm			6 gpm	22 lpm			8.5 gpm	30 lpm			8.5 gpm	30 lpm			
Max Head	7 ft / 3.0 psi	1.6 m			7 ft / 3.0 psi	1.6 m			19 ft / 8.2 psi	4 m			19 ft / 8.2 psi	4 m			
Inlet - Outlet	1/2" OD - 1/2" OD				5/8" OD - 5/8" OD				1/2" OD - 1/2" OD				5/8" OD - 5/8" OD				
Max Internal Pressure	50 psi / 344 kPa				50 psi / 344 kPa				50 psi / 344 kPa				50 psi / 344 kPa				
Max Liquid Temperature	190 °F / 87 °C				190 °F / 87 °C				190 °F / 87 °C				190 °F / 87 °C				
Packed Weight	115 V	4.50 lbs / 2.04 kg			4.55 lbs / 2.06 kg			5.20 lbs / 2.35 kg			5.20 lbs / 2.35 kg			5.20 lbs / 2.35 kg			
	230 V	5.05 lbs / 2.29 kg			5.05 lbs / 2.29 kg			5.20 lbs / 2.35 kg			5.20 lbs / 2.35 kg			5.15 lbs / 2.33 kg			
ELECTRICAL 60 Hz	W	A	Hp	Rpm	W	A	Hp	Rpm	W	A	Hp	Rpm	W	A	Hp	Rpm	
	115 V	59	0.94	1/55	1750	59	0.94	1/55	1750	115	1.55	1/25	3450	115	1.55	1/25	3450
	230 V	59	0.45	1/40	1750	59	0.45	1/40	1750	114	0.7	1/25	3450	114	0.7	1/25	3450
ELECTRICAL 50 Hz	W	A	kW	Rpm	W	A	kW	Rpm	W	A	kW	Rpm	W	A	kW	Rpm	
	115 V																
	230 V	64	0.5	0.018	1300	64	0.5	0.018	1300	120	0.7	0.029	2850	120	0.7	0.029	2850
OVERALL SIZE	Height	Width	Length	Height	Width	Length	Height	Width	Length	Height	Width	Length	Height	Width	Length		
	115 V	4.94"	3.88"	7.09"	4.97"	3.88"	7.09"	4.94"	3.88"	7.69"	4.97"	3.88"	7.69"	4.97"	3.88"	7.69"	
	230 V	4.94"	3.88"	7.34"	4.97"	3.88"	7.34"	4.94"	3.88"	8.11"	4.97"	3.88"	8.11"	4.97"	3.88"	8.11"	
Materials in Contact with Solution:	Polypropylene, Ceramic Magnet, Buna N, Kynar/Carbon Filled				Polypropylene, Ceramic Magnet, Buna N, Kynar/Carbon Filled				Polypropylene, Ceramic Magnet, Buna N, Kynar/Carbon Filled, Ryton/Teflon/Carbon, Stainless Steel				Polypropylene, Ceramic Magnet, Buna N, Kynar/Carbon Filled, Ryton/Teflon/Carbon, Stainless Steel				

All specifications/values are based on pumping water and are intended as a guideline only. Values may vary with different motors.

PARTS LIST



NOTE: When attaching the Drive Magnet to the motor shaft, position the face of the Drive Magnet 1/16 inch below the face of the Motor Bracket.

#	DESCRIPTION	MATERIAL	SIZE (Inches)	QTY.	MDX-1/2	MDX-5/8	MDX-3-1/2	MDX-3-5/8
1	Screw	Stainless Steel	#10-32 x 1 Lg.	4	0135-0180-1000			
2	Front Housing	Polypropylene	1/2 OD Inlet & Outlet	1	0135-0118-1000		0135-0118-1000	
			5/8 OD Inlet & Outlet			0135-0117-1000		0135-0117-1000
3	"O" Ring	Buna N	1/16 CS x 3 OD	1	0135-0007-1000			
4	"O" Ring (Option)	Viton	1/16 CS x 3 OD	1	0135-0023-1000			
5	Screw	Stainless Steel	#8-32 x 1/4 Lg.	1	0135-0042-1000			
6	Thrust Washer	Ryton/Teflon/Carbon		1	0802-0057-1000			
7	Impeller w/Ceramic Magnet	Polypropylene	2.062 Dia.	1	0135-0043-0100			
	Impeller Encapsulated (Option)	Polypropylene	2.062 Dia.	1	0135-0130-0200			
8	Impeller w/Ceramic Magnet	Polypropylene	2.625 Dia.	1	0135-0026-0100			
	Impeller Encapsulated (Option)	Polypropylene	2.625 Dia.	1	0135-0133-0200			
9	Rear Housing	Kynar/Carbon Filled		1	0802-0043-1000			
10	Drive Magnet			1	0135-0126-0100			
11	Screw	Stainless Steel	#8-32 x 5/8 Lg.	4	0618-0027-1000			
12	Lock Washer	Stainless Steel	#8	4	0620-0010-1000			
13	Motor Bracket	Plastic		1	0135-0168-0100			
14	Motor, 1750 RPM, 115 V, 60 Hz			1	0135-0109-1000			
15	Motor, 1750 RPM, 230 V, 50/60 Hz			1	0135-0112-1000			
16	Motor, 3450 RPM, 115 V, 50/60 Hz			1	0135-0036-1000			
17	Motor, 3450 RPM, 230 V, 50/60 Hz			1	0135-0037-1000			

NOTE: Contact Factory for other materials and/or parts not listed.

0135-0107-1000 R23