



MARCH PUMPS

1819 PICKWICK AVE., GLENVIEW, IL 60026-1306, U.S.A
 PHONE: (847) 729-5300 - FAX: (847) 729-7062
 WWW.MARCHPUMP.COM

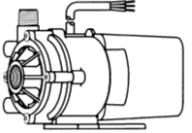
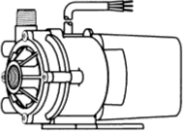
LC-3CP-MD

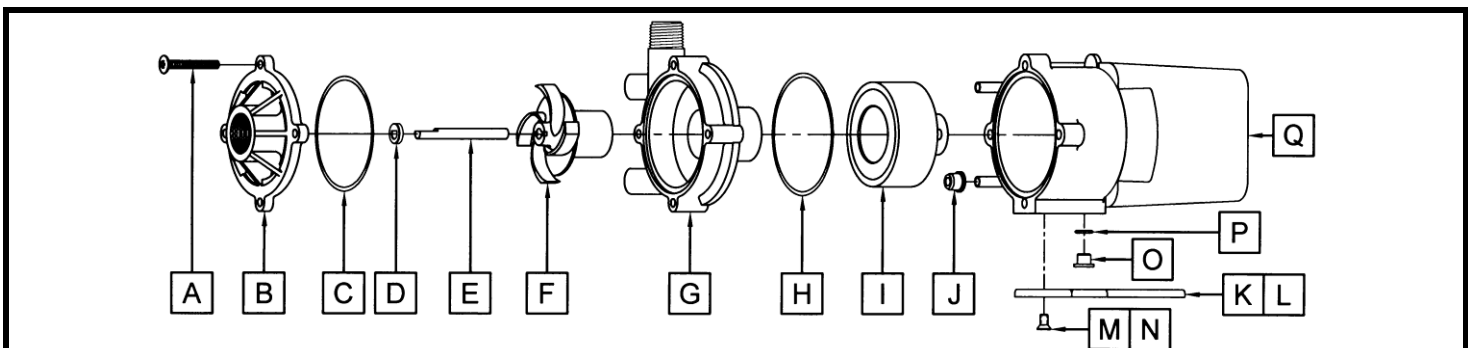
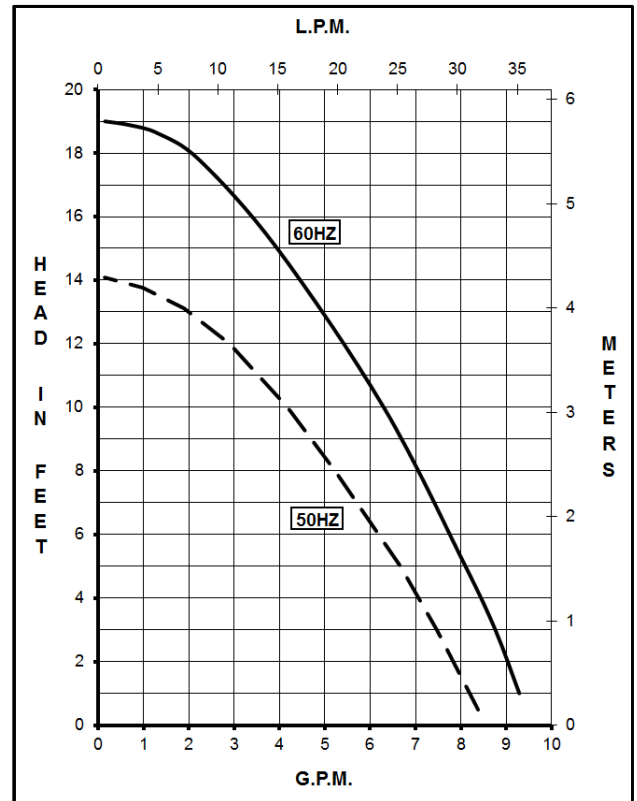
DESCRIPTION: The LC-3CP-MD is a centrifugal magnetic drive pump, eliminating the need for a shaft seal. Pumps are serviceable with a screwdriver. The "LC" is hermetically encapsulated and liquid cooled which allows the pump to be run fully submerged or in open air for complete moisture protection.

OPERATION: Pumps are not self-priming, lack a suction lift, and thus require a **flooded suction**. Pumps **cannot be run dry** because the impeller requires the liquid being pumped for lubrication. For liquids with a specific gravity greater than water, have a higher viscosity, or for elevated temperatures, a trimmed impeller may be necessary. For application assistance, contact March Pump.

ELECTRICAL: Motors are available in different electrical configurations such as 115 Volt 50/60 Hz, or 230 Volt 50/60 Hz, 1 phase. The motors are U.L. listed and rated as continuous duty. Models have a 6 foot (1.8 m) cord.

LIMITED WARRANTY: March pumps are guaranteed only against defects in workmanship or materials for a period of one year from date of manufacture pumping water. For the complete warranty and to register online go to www.marchpump.com/warranty-registration

| MODELS | LC-3CP-MD (115 V) | | | | LC-3CP-MD (230 V) | | | |
|---|---|---------|---------|---------|---|---------|---------|---------|
| |  | | | |  | | | |
| Product # | 0130-0158-0200 | | | | 0130-0159-0200 | | | |
| UNITS | 60 Hz | | 50 Hz | | 60 Hz | | 50 Hz | |
| Max Flow | 8.5 gpm | | 31 lpm | | 8.5 gpm | | 31 lpm | |
| Max Head | 19 ft / 8.2 psi | | 4.3 m | | 19 ft / 8.2 psi | | 4.3 m | |
| Inlet - Outlet | 3/4" FPT - 1/2" MPT | | | | 3/4" FPT - 1/2" MPT | | | |
| Max Internal Pressure | 25 psi / 172 kPa | | | | 25 psi / 172 kPa | | | |
| Max Liquid Temperature | 130 °F / 54 °C | | | | 130 °F / 54 °C | | | |
| Packed Weight | 7.90 lbs / 3.58 kg | | | | 7.95 lbs / 3.60 kg | | | |
| ELECTRICAL 60 Hz | W | A | Hp | Rpm | W | A | Hp | Rpm |
| | 120 | 2.0 | 1/20 | 3450 | 120 | 1.0 | 1/20 | 3450 |
| ELECTRICAL 50 Hz | W | A | kW | Rpm | W | A | kW | Rpm |
| | 137 | 2.3 | 0.037 | 2850 | 100 | 1.0 | 0.037 | 2850 |
| OVERALL SIZE | Height | Width | Length | Height | Width | Length | Height | Width |
| | 4.87" | 4.75" | 7.38" | 4.87" | 4.75" | 7.38" | 4.87" | 4.75" |
| | 12.3 cm | 12.0 cm | 18.7 cm | 12.3 cm | 12.0 cm | 18.7 cm | 12.3 cm | 12.0 cm |
| Materials in Contact with Solution: | Polypropylene, Cupric Nickel, Buna N, Ceramic, Ceramic Magnet | | | | | | | |
| | Also when submerged: Epoxy, Stainless, Ryton, & Cord | | | | | | | |
| All specifications/values are based on pumping water and are intended as a guideline only. Values may vary with different motors. | | | | | | | | |



| # | DESCRIPTION | MATERIAL | QTY. | PART # | # | DESCRIPTION | MATERIAL | QTY. | PART # |
|---|-----------------------------------|---------------|------|----------------|---|--|---------------|------|----------------|
| A | Screw #10-32 x 1-1/2" Lg. | Stainless | 4 | 0823-0008-1000 | J | Cooling Tube Seal | Buna N | 2 | 0125-0007-1000 |
| B | Cover | Polypropylene | 1 | 0130-0021-1000 | K | Mounting Base | Polypropylene | 1 | 0125-0037-1000 |
| C | "O" Ring 3/32" CS x 2-13/16" OD | Buna N | 1 | 0130-0011-1000 | L | *†Marine Base w/Grommets | Polypropylene | 1 | 0125-0113-0100 |
| D | Thrust Washer | Ceramic | 1 | 0130-0028-1000 | M | Base Screw | Stainless | 2 | 0130-0132-1000 |
| E | Shaft | Ceramic | 1 | 0130-0024-1000 | N | *†Marine Base Screw | Stainless | 2 | 0130-0146-1000 |
| F | Impeller w/Ceramic Magnet | Polypropylene | 1 | 0130-0020-0100 | O | Plug for Motor Bracket | | 1 | 0125-0110-1000 |
| G | Rear Housing & Plug Assembly | Polypropylene | 1 | 0130-0019-0100 | P | "O" Ring 1/16" CS x 7/16" OD | Viton | 1 | 0210-0008-1000 |
| H | Bracket "O" Ring 3/32" CS x 3" OD | Buna N | 1 | 0130-0025-1000 | Q | L.C. Epoxy Motor, Bracket, Cord Assembly | | N/A | Not Available |
| I | Drive Magnet | | 1 | 0130-0043-0200 | | | | | |

NOTE: Contact Factory for other materials and/or parts not listed.

0130-0036-1000 R27