

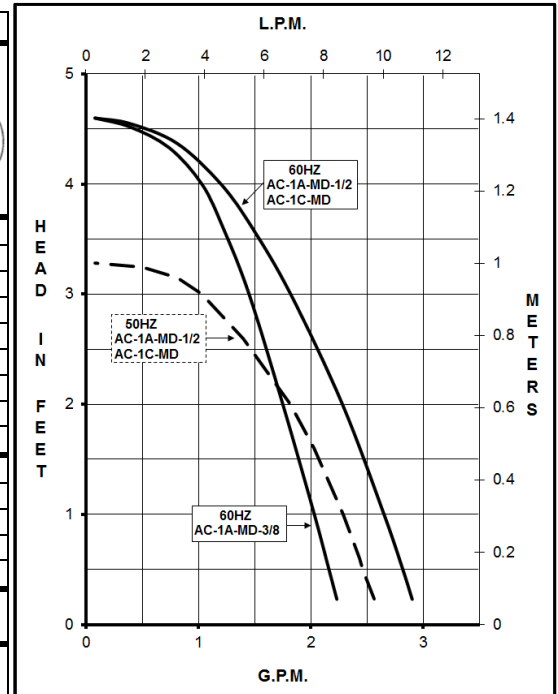


# MARCH PUMPS

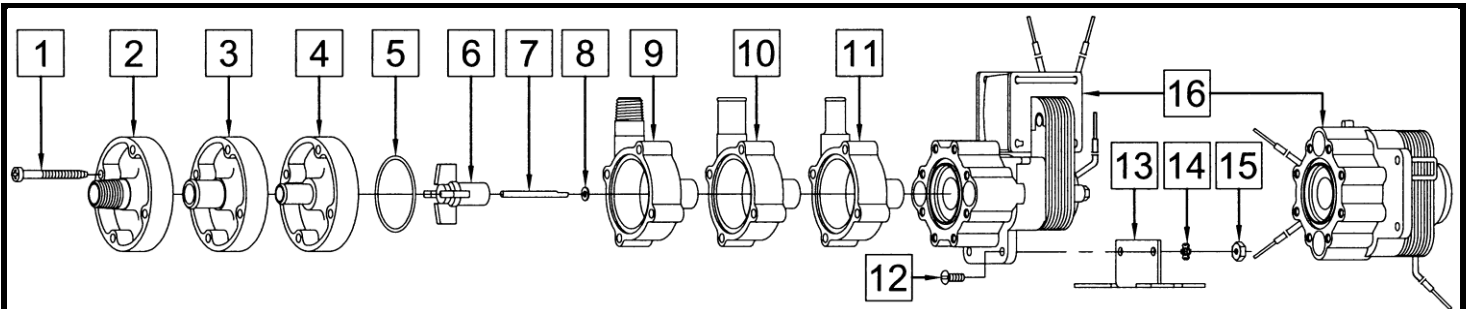
1819 PICKWICK AVE., GLENVIEW, IL 60026-1306, U.S.A  
 PHONE: (847) 729-5300 - FAX: (847) 729-7062  
 WWW.MARCHPUMP.COM

## AC-1A-MD, AC-1C-MD

SPECIFICATIONS		AC-1A-MD-3/8	AC-1A-MD-1/2	AC-1C-MD
<b>Model Abbreviations</b>		A: Smooth Inlet/Outlet, C: Threaded Inlet/Outlet		
Max Flow	60Hz - 50Hz	2.3 gpm - 8.7 lpm		3.0 gpm - 9 lpm
Max Head	60Hz - 50Hz	4.6 ft / 2.0 psi - 1 m		
Inlet - Outlet		3/8" OD - 3/8" OD	1/2" OD - 1/2" OD	1/4" MPT - 1/4" MPT
Max Internal Pressure		50 psi - 3.4 bar		
Max Liquid Temperature		190°F / 87°C		
Packed Weight	115V	1.85 lbs / 0.83 kg		1.80 lbs / 0.81 kg
	230V			
Overall Pump Size		3.06" (7.7cm) Height x 3.60" (9.1cm) Width x 4.38" (11.1cm) Length		
		<b>60Hz - 115V</b>	<b>60Hz - 230V</b>	<b>50Hz - 230V</b>
<b>Motor Type</b>		AC: Expose Skeleton Motor		
1 Ph	Watts - Amps	19 - 0.45	19 - 0.23	19 - 0.23
	Hp / Kw - Rpm	1/200 - 3200		0.003 - 2650
<b>Electrical Connection</b>		16" (40 cm) Loose Leads		
<b>Materials in Contact w/Solution:</b>		Polypropylene, Nylon, Buna N, 316 Stainless Steel, Ceramic Magnet, & Carbon/Teflon Washer.		
All specifications & data are based on pumping water & are intended as a guideline only. Specifications may vary with different motors.				



**OVERVIEW:** Series 1 are centrifugal magnetic drive pumps, eliminating the need for a shaft seal. Pumps are serviceable with a screwdriver. See below for a breakdown of parts. Pumps are not self-priming, lack a suction lift, and thus require a **flooded suction**. Pumps **cannot be run dry** because the impeller requires the liquid being pumped for lubrication. For application assistance, contact March Pump. Motors are available in different electrical configurations such as 115V 60Hz or 230V 50/60Hz, 1 phase, and rated as continuous duty.



#	DESCRIPTION	MATERIAL	SIZE (Inches)	QTY.	AC-1A-MD-3/8	AC-1A-MD-1/2	AC-1C-MD
1	Self-Tapping Screw	Stainless	#7-19 x 1-7/16 Lg.	4	0115-0062-1000		
2	Cover	Polypropylene	1/4 MPT Inlet	1			0115-0058-1000
3	Cover	Polypropylene	1/2 OD Inlet	1		0115-0060-1000	
4	Cover (Option)	Kynar	1/2 OD Inlet	1		0115-0096-1000	
4	Cover	Polypropylene	3/8 OD Inlet	1	0115-0075-1000		
5	"O" Ring	Buna N	1/16 CS x 1-7/16 OD	1		0115-0018-1000	
5	"O" Ring (Option)	Viton		1		0115-0061-1000	
5	"O" Ring (Option)	Teflon		1		0115-0069-1000	
6	Impeller	Nylon/Ceramic Magnet		1		0115-0008-0100	
6	Impeller (Option)	Kynar/Ceramic Magnet		1		0115-0097-0100	
7	Shaft	316 Stainless		1		0115-0032-1000	
8	Thrust Washer	Carbon/Teflon		1		0115-0033-1000	
9	Rear Housing	Polypropylene	1/4 MPT Outlet	1			0115-0057-1000
10	Rear Housing	Polypropylene	1/2 OD Outlet	1		0115-0059-1000	
10	Rear Housing (Option)	Kynar	1/2 OD Outlet	1		0115-0095-1000	
11	Rear Housing	Polypropylene	3/8 OD Outlet	1	0115-0074-1000		
12	Screw (Option)	Stainless	#6-32 x 3/8 Lg.	2		0455-0038-1000	
13	Base (Option)	Stainless		1		0115-0081-1000	
14	Lock Washer (Option)	Stainless	#6	2		0455-0037-1000	
15	Nut (Option)	Steel	#6-32	2		0455-0043-1000	
16	Air Cooled Assembly (115V 60Hz)			1		0858-0009-0100	
16	Air Cooled Assembly (230V 50/60Hz)			1		0858-0013-0100	

**LIMITED WARRANTY:** March pumps are guaranteed only against defects in workmanship or materials for a period of one year from date of manufacture pumping water. For the complete warranty and to register online go to [www.marchpump.com/warranty-registration](http://www.marchpump.com/warranty-registration)

NOTE: Contact Factory for other materials and/or parts not listed.

0115-0035-1100 R2