



MARCH PUMPS

1819 PICKWICK AVE., GLENVIEW, IL 60026-1306, U.S.A
PHONE: (847) 729-5300 - FAX: (847) 729-7062
WWW.MARCHPUMP.COM

1A-MD, 1C-MD, 1U-MD

DESCRIPTION:

Series 1 are centrifugal magnetic drive pumps, eliminating the need for a shaft seal. Pumps are serviceable with a screwdriver. The models are hermetically encapsulated, which allows the pumps to run fully submerged in many liquids or in open air for complete moisture protection. See the parts list for a breakdown of parts.

OPERATION:

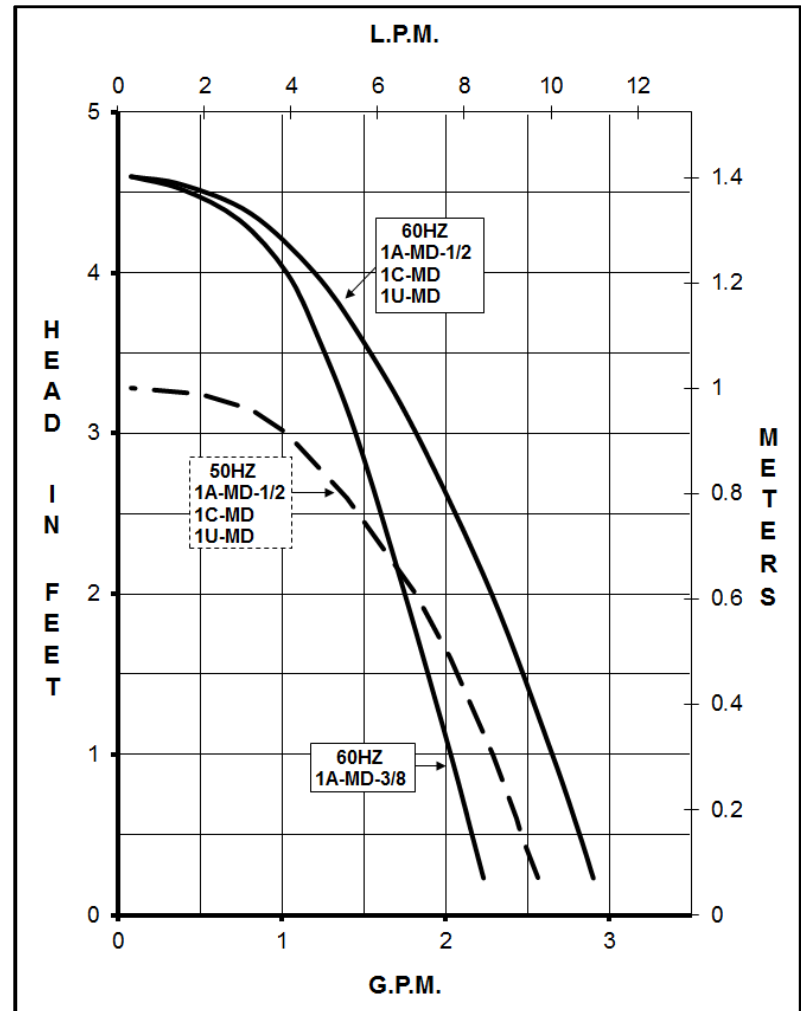
Pumps are not self-priming, lack a suction lift, and thus require a **flooded suction**. Pumps **cannot be run dry** because the impeller requires the liquid being pumped for lubrication. For application assistance, contact March Pump.

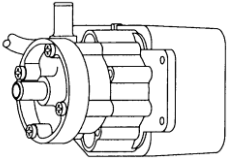
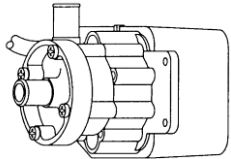
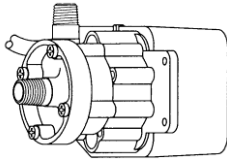
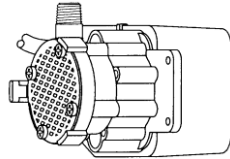
ELECTRICAL:

The models are U.L. Recognized under the U.L. component program. U.L. Recognition On Pumps Is For Water Only.

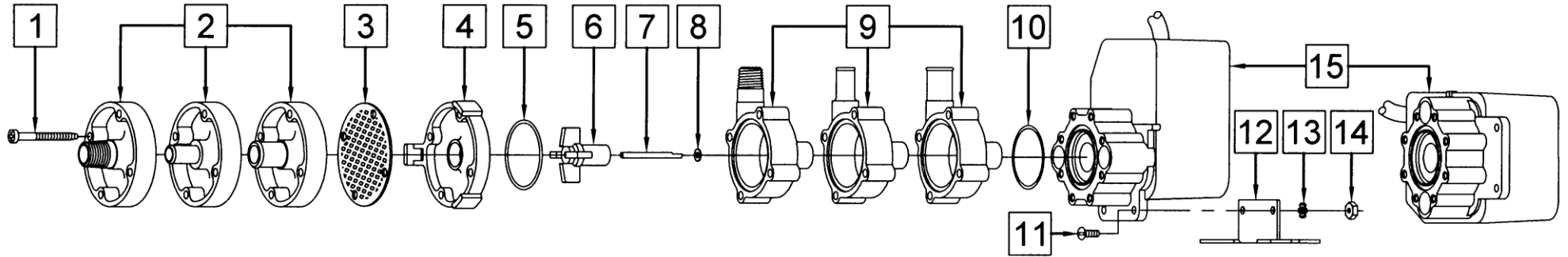
LIMITED WARRANTY:

March pumps are guaranteed only against defects in workmanship or materials for a period of one year from date of manufacture pumping water. For the complete warranty and to register online go to www.marchpump.com/warranty-registration



SPECIFICATIONS	1A-MD-3/8		1A-MD-1/2		1C-MD		1U-MD	
								
Model Abbreviations	A: Smooth Inlet/Outlet				C: Threaded Inlet/Outlet		U: Screen Inlet	
Max Flow	60Hz {2.3 gpm} - 50Hz {8.7 lpm}		60Hz {3.0 gpm} - 50Hz {9 lpm}					
Max Head	60Hz {4.6 ft / 2.0 psi} - 50Hz {1 m}							
Inlet - Outlet	3/8" OD - 3/8" OD		1/2" OD - 1/2" OD		1/4" MPT - 1/4" MPT		Screen - 1/4" MPT	
Internal Pressure	50 psi - 3.4 bar Max							
Liquid Temperature	190°F / 87°C Max open air, 160°F / 71°C Max submersible							
Overall Size (H x W x L)	3.17" x 3.75" x 4.44"		3.17" x 3.75" x 4.44"		3.17" x 3.75" x 4.44"		3.17" x 3.75" x 3.83"	
	8.1 cm x 9.5 cm x 11.3 cm		8.1 cm x 9.5 cm x 11.3 cm		8.1 cm x 9.5 cm x 11.3 cm		8.1 cm x 9.5 cm x 9.7 cm	
Packed Weight	(115V) 2.65 lbs / 1.20 kg (230V) 2.60 lbs / 1.17 kg		(115V) 2.65 lbs / 1.20 kg (230V) 2.60 lbs / 1.17 kg		(115V) 2.60 lbs / 1.17 kg (230V) 2.55 lbs / 1.15 kg		(115V) 2.65 lbs / 1.20 kg (230V) 2.65 lbs / 1.20 kg	
	60Hz - 115V		50Hz - 115V		60Hz - 230V		50Hz - 230V	
Motor Type	Totally Enclosed Submersible 115V 50/60Hz OR 230V 50/60Hz - Rated for continuous duty.							
1Ph Watts - Amps	19 - 0.45		19 - 0.45		19 - 0.23		19 - 0.23	
Hp / Kw - Rpm	1/200 - 3200		0.003 - 2650		1/200 - 3200		0.003 - 2650	
Electrical Connection	6 ft (1.8 m) Cord w/plug U.L. LISTED 18/3 wire SJT plastic				6 ft (1.8 m) Cord no plug U.L. LISTED 18/3 wire SJT plastic			
Materials In Contact	Polypropylene, Nylon, Buna N, 316 Stainless Steel, Ceramic Magnet, and Carbon/Teflon washer.							
w/Solution:	When submerged the following additional materials are in contact Epoxy, Noryl, Cyclocac, Delrin, and SJT cord.							
All specifications & data are based on pumping water & are intended as a guideline only. Specifications may vary with different motors.								

PARTS LIST



#	DESCRIPTION	MATERIAL	SIZE (Inches)	QTY.	1A-MD-3/8	1A-MD-1/2	1C-MD	1U-MD
1	Self-Tapping Screw	Stainless	#7-19 x 1-7/16 Lg.	4	0115-0062-1000			
2	Cover	Polypropylene	3/8 OD Inlet	1	0115-0075-1000			
	Cover	Polypropylene	1/2 OD Inlet	1		0115-0060-1000		
	Cover	Polypropylene	1/4 MPT Inlet	1			0115-0058-1000	
	Cover (Option)	Kynar	1/2 OD Inlet	1	0115-0096-1000			
3	Inlet Screen	Delrin		1				0115-0012-1000
4	Cover	Cyclac		1				0115-0016-1000
5	"O" Ring (Cover)	Buna N	1/16 CS x 1-7/16 OD	1	0115-0018-1000			
	"O" Ring (Cover) (Option)	Viton		1	0115-0061-1000			
	"O" Ring (Cover) (Option)	Teflon		1	0115-0069-1000			
6	Impeller	Nylon/Ceramic Magnet		1	0115-0008-0100			
	Impeller (Option)	Kynar/Ceramic Magnet		1	0115-0097-0100			
7	Shaft	316 Stainless		1	0115-0032-1000			
8	Thrust Washer	Carbon/Teflon		1	0115-0033-1000			
9	Rear Housing	Polypropylene	3/8 OD Outlet	1	0115-0074-1000			
	Rear Housing	Polypropylene	1/2 OD Outlet	1		0115-0059-1000		
	Rear Housing	Polypropylene	1/4 MPT Outlet	1			0115-0057-1000	
	Rear Housing (Option)	Kynar	1/2 OD Outlet	1	0115-0095-1000			
10	"O" Ring (Bracket)	Buna N	1/16 CS x 1-5/16 OD	1	0115-0017-1000			
11	Screw (Option)	Stainless	#6-32 x 3/8 Lg.	2	0455-0038-1000			
12	Base (Option)	Stainless		1	0115-0081-1000			
13	Lock Washer (Option)	Stainless	#6	2	0455-0037-1000			
14	Nut (Option)	Steel	#6-32	2	0455-0043-1000			
15	Epoxy Motor, Bracket, Cord Assy. (115V 50/60Hz) or (230V 50/60Hz)			n/a	Not Available			

NOTE: Contact Factory for other materials and/or parts not listed.

0115-0035-1000 R29