



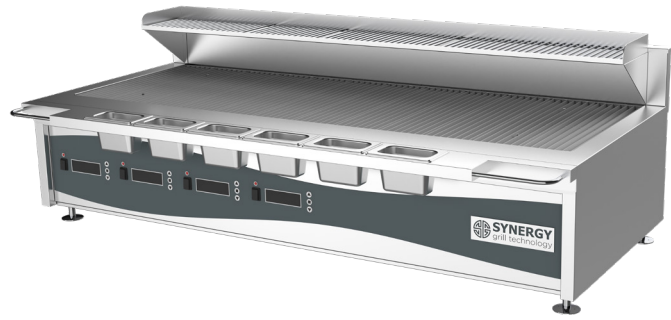
Specifications:

Model	ST1700	
W x D x H (mm)	1700 x 836 x 580	
Weight	190kg	
Packed Dimensions (mm)	1800 x 900 x 700	
Packed Weight (mm)	220kg	
Electrical Connection	1Ø + N + E 240VAC / 50Hz / 0.24kW	
Gas Connection	Natural 3/4" BSP	Universal LPG 3/4" BSP
Minimum Normal Test Gas Pressure	1.3 kPa	2.75 kPa
Maximum Normal Test Gas Pressure	3.5 kPa	3.5 kPa
Nominal Test Point Pressure	1.0 kPa	2.50 kPa
Total Nominal Gas Consumption	111.88 MJ/h	111.88 MJ/h

Note: It is the responsibility of the installing gas plumber to ensure correct supply and connection sustaining appropriate pressure, when all installed gas appliances are operating at maximum.

Legend:

- A Gas Connection
- B Electrical Connection



Product Information:

- Patented award winning gas burner system
- Electronic Ignition with flame detection probe. No thermocouples
- Rapid heat up system – ready to use in 30 minutes
- Up to 45% gas savings when compared with equivalent model grills (33 MJ/h Burners)
- Vortex air technology combined with a natural ceramic heat bed delivers exceptional heat distribution
- Robust 304 grade stainless steel construction
- SMART Digital controller with 10 power settings, four cooking zones with independent temperature regulation
- Slow Cook shelf and Garnish Rail supplied standard
- Griddle plate, divider plate, resting shelf, rotisserie and stand sold separately
- **24-months parts and labour warranty**

General Drawing:

