

CR.RPR.RC.1175

Roll-In Plating Refrigerator Refrigerated

Suits 2 x 1/1 Gastronorm Trolleys



Product Code:

CR	= Culinaire Refrigerated
RPR	= Roll-In Plating Refrigerator
RC	= Remote Service Compartment
1175	= 1175mm Wide

Left Hand Drain & Left Hand Hinged Door

- Add L to code CR.RPR.RC.L.1175

Accessories

1/1 GN Trolley - Simply Stainless

- Supplied flat packed SS16.1/1 ready for assembly

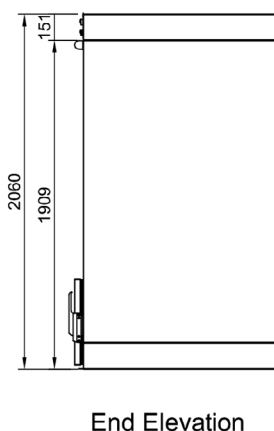
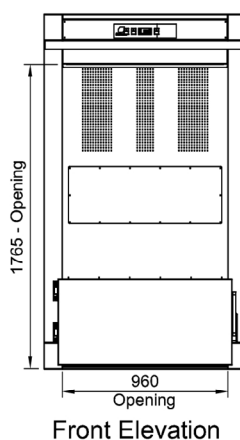
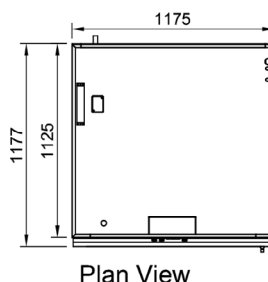
Technical Data:

Dimensions: W x D x H:	1177 x 1175 x 2060
*Remote Refrigeration Load:	2990 Watts -10°C SST
Refrigerant Type:	R507 or 404A
Pipe Connection Inlet	1/2"
Pipe Connection Outlet	1/4"
Total Connected Load:	1.2kW
Electrical Connection:	240V 1Ø + N + E

Note: Refrigeration load is calculated at the cabinet

Product Information:

- Keeps contents at a cool +2°C to +4°C in 20°C controlled environment
- The combination of an air curtain and fan forced refrigeration from the top, back and each side creates a uniform temperature within the refrigerator
- The door at the foot of the refrigerator assists with maintaining the internal temperature by minimising the loss of refrigerated air while still allowing a trolley to be rolled in and out and loaded without constantly opening the door
- For extended holding periods, a roller curtain is provided which magnetically seals opening opening to the top of the door
- Heater wire in cabinet fascia to prevent condensation
- L.E.D. lighting provides illumination to the interior
- Robust stainless steel construction
- Fitted with roll-in roll-out to base of refrigerator
- Suits either a double 1/1 gastronorm trolley or 2 x 1/1 gastronorm trolleys (sold separately)
- Condensate drain is located on right hand side of the refrigerator as standard. Additionally the door to the foot of the refrigerator is right hand hinged as standard.
- The refrigerator can be ordered with left hand drain and hinged door by adding ".L" to code
- Remote condenser unit to be supplied separately and connected by a qualified refrigeration contractor and electrician
- Condensate is to be plumbed to waste



Proudly Manufactured
in Australia

Due to continuous product research and development, the information contained herein is subject to change without notice

Manufactured By:

Tom Stoddart Pty Ltd. ABN 16 009690251
39 Forest Way, Karawatha 4117 Queensland Australia
Tel : +61 7 3440 7600 Fax : +61 7 33441000
Web site: www.stoddart.com.au