



Culinaire

INDUSTRY
KITCHENS

www.industrykitchens.com.au 1800 611 058

Technical Data Sheet

CH.VHC.1411

Vertical Hot Cupboard Heated

Half Height



Product Code:

CH = Culinaire Heated
 VHC = Hot Cupboard - Vertical
 1411 = 14 1/1 GN Pans

Accessories:

2/1 GN Chrome Wire Shelves

- To suit all 2/1 sized banquet carts CMGE.0421

Tray Slides - Set of 2

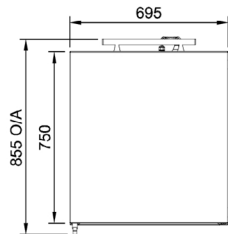
- To suit all banquet carts CH.CTS

Technical Data:

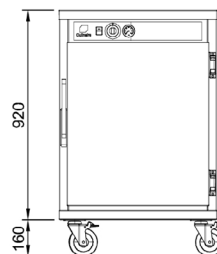
Dimensions: W x D x H: 695 x 855 x 1080
 Total Connected Load: 1.5kW
 Electrical Connection: 10A plug & lead fitted

Product Information:

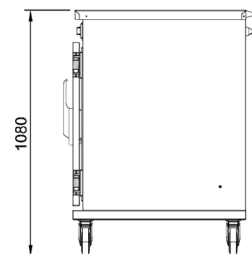
- Designed for the storage and transportation a wide variety of hot food products in covered gastronorm pans. For holding of uncovered food or plated meals see Banquet Carts on pages H-24 & H-25
- Excellent food holding capacity (food must be heated above 65°C before being placed in hot cupboard)
- Choose from either fully insulated solid stainless steel door with adjustable humidity vents or solid toughened glass door. All doors with self closing hinges and magnetic snap lock handle to ensure firm door closure
- Unit comes with an element to base to provide static convective heat
- Includes removable water tray in base to introduce moisture to the hot cupboard
- Easy-to-use and highly reliable mechanical temperature controls
- Insulated on all sides, constructed from 304 grade stainless steel with a No.4 finish
- Horizontal handle for effortless maneuverability
- Heavy-duty non-marking 125mm swivel casters with brakes
- Unit also comes complete with 7 x sets of G/N tray slides for fitting to fully height adjustable rails inside cabinet. For use with 2/1 or 1/1 G/N pans (sold separately)
- Supplied with 4 x 2/1 G/N sized chrome wire shelves
- Capacities based on 65mm deep pans
- Fan forced models are available as an option. Contact your Stoddart representative for details



Plan View



Front Elevation



End Elevation



Proudly Manufactured in Australia

Due to continuous product research and development, the information contained herein is subject to change without notice

Manufactured By:

Tom Stoddart Pty Ltd. ABN 16 009690251
 39 Forest Way, Karawatha 4117 Queensland Australia
 Tel : +61 7 3440 7600 Fax : +61 7 33441000
 Web site: www.stoddart.com.au

