



HydroTap G5 BCSHA20 Celsius All-In-One Arc Chrome

Boiling Chilled Sparkling



Finish: Chrome

Product code: H57760Z00AU

Capacity: Commercial

Zip HydroTap Design Range CELSIUS All-In-One Boiling, Chilled & Sparkling Filtered water, plus Hot and Cold washing up water from a single tap (hot and cold water supply required). The system features a single under bench command centre including full colour interactive touch screen display with pin code protection and customisable settings including boiling water safety mode, 3 energy saving modes including ON/OFF timers and 2 hour sleep mode, 'Quiet' mode with automated intelligent fan speed adjustment, antimicrobial protection impregnated into key water paths for enhanced hygiene, 100% water efficient air cooled technology, 0.2 micron water filtration, and a refillable CO2 cylinder. Easy to install integrated ventilation tray included.

Specifications

Product name	HydroTap G5 BCSHA20 Celsius All-In-One Arc Chrome
Product code	H57760Z00AU
Filtered water type	BCSHA
Product approvals	WaterMark, RCM, ARC
Wels rating	5 Star, 6.0 litres
Warranty	5 years (appliance warranty 36 months plus additional 24 months tank warranty)

Capacity, weight & dimensions

Number of people	1-20
Boiling cups per hour	100
Combined chilled and sparkling cups per hour	75

Plumbing

Water supply requirements	Cold and Hot
Water connection	1/2" BSP (G1/2)
Water valves	Integrated 500kPa Pressure limiting valve and Dual Check Valve
Water pressure	Min 250kPa - Max 700kPa

Electrical

Power rating	1.96kW 220-240V 50Hz
Power supply	1 × 10 Amp socket outlet

Tap design

Tap	Zip HydroTap Design Range CELSIUS All-In-One ARC Tap (Chrome)
HydroTap style	Celsius All-In-One Arc
Finish	Chrome
Disability options	Unavailable

Command centre

Dimensions

W339mm x D483mm x H333mm

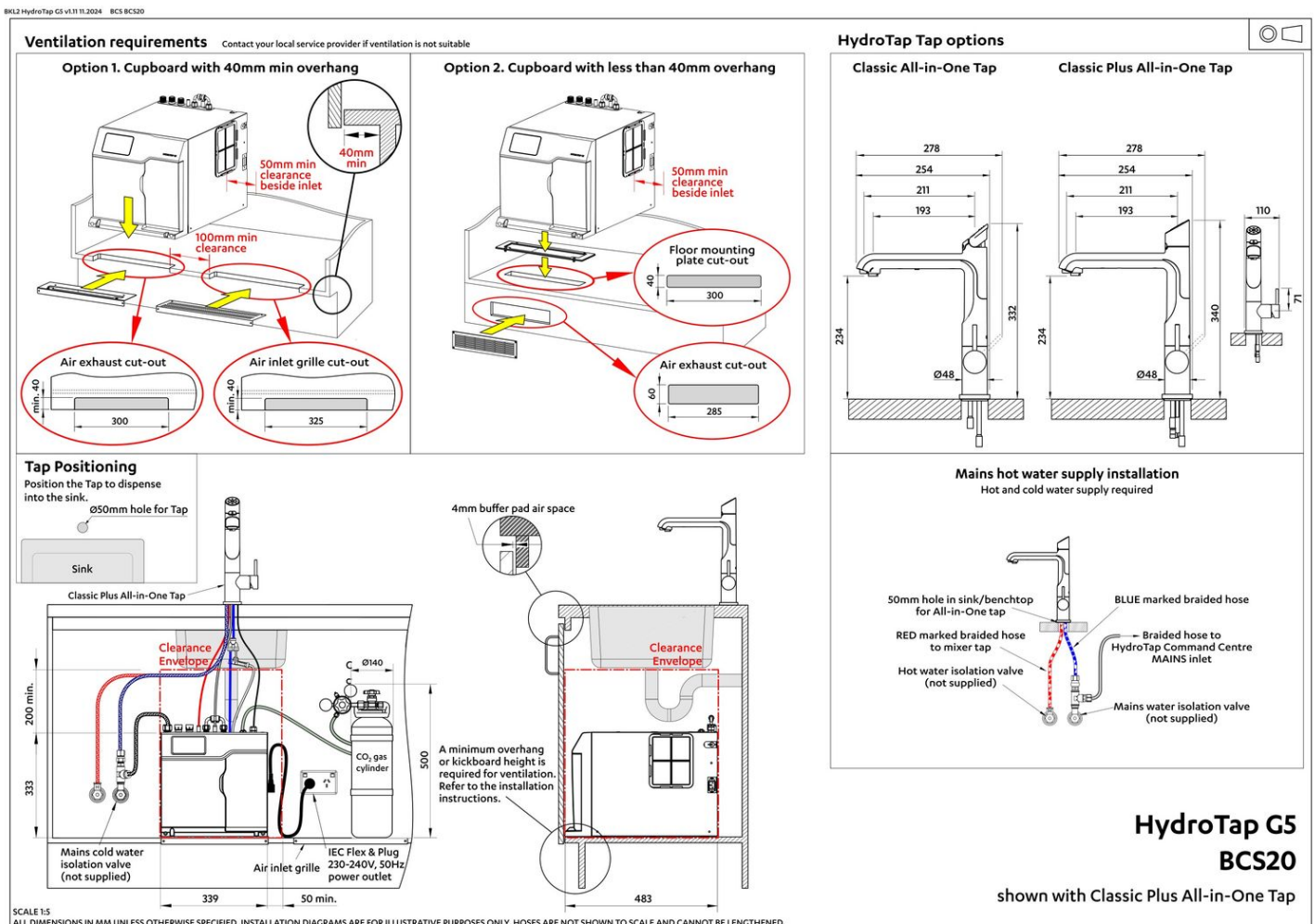
Installation

Installation requirements

1. Installation and connection of your Zip HydroTap must be carried out by a qualified person, observing national and local regulations.
2. You will require suitable mains electrical and drinking water connections, plus waste water drainage all within 1.5 metres of the product.
3. **Discrete cabinetry cut outs are required for airflow. 40mm minimum clearance on cupboard base overhang required otherwise alternative installation options are available.**
4. Installation on most bench tops is straightforward however some stone bench tops may require a specialised cutting service.
5. If you live in a hard water area, we recommend installation of a Zip scale filtration kit.
6. Installation by Zip Professional Service can be arranged with a phone call or through www.zipwater.com/book-service-visit

Files

Installation Layout 3D (DWG)



Installation Layout (PDF)

Tap Detail (DWG)

Certifications



Environment
ISO 14001



Health & Safety
AS/NZS 4801



Quality
ISO 9001



WaterMark



↓ ARC (PDF)



↓ Environment ISO (PDF)



↓ Environmental Product Declaration Brochure (PDF)



↓ EPD (PDF)



↓ Filter performance (PDF)



↓ Health & Safety (PDF)



↓ HydroTap Clean SDS (PDF)



↓ Quality ISO (PDF)

Manuals & brochures



↓ Brochure (PDF)



↓ CO₂ MSDS (PDF)



↓ Instruction manual (PDF)



↓ Quick guide (PDF)



↓ Tap operation label (PDF)



↓ User manual (PDF)

↓ Download all