



## HydroTap G5 BA100 Classic Plus Chrome

Boiling Ambient

 **Finish:** Chrome

**Product code:** H55709Z00AU

**Capacity:** Commercial

Zip HydroTap Classic Plus Boiling, Ambient Filtered water tap features simple, intuitive controls including continuous flow to fill bottles, Boiling water safety lock, and antimicrobial protection impregnated within the new Classic Plus touch-pad for enhanced hygiene. The water system features a single under bench command centre including full colour interactive touch screen display with pin code protection and customisable settings including 2 boiling water safety modes, 3 energy saving modes including ON/OFF timers and sensor activated 'sleep when it's dark', antimicrobial protection impregnated into key water paths for enhanced hygiene, and 0.2 micron water filtration.

# Specifications

Product name	HydroTap G5 BA100 Classic Plus Chrome
Product code	H55709Z00AU
Filtered water type	BA
Product approvals	WaterMark, RCM
Warranty	5 years (appliance warranty 36 months plus additional 24 months tank warranty)

# Capacity, weight & dimensions

Number of people	61-100
Boiling cups per hour	240

# Plumbing

Water supply requirements	Cold
Water connection	1/2" BSP (G1/2)
Water valves	Integrated 500kPa Pressure limiting valve and Dual Check Valve
Water pressure	Min 200kPa - Max 700kPa

# Electrical

Power rating	1.8kW 220-240V 50Hz
Power supply	2 × 10 Amp socket outlets
Booster power rating	Zip HydroTap Booster 2.2kW 220-240V 50/60Hz

# Tap design

Tap	Zip HydroTap CLASSIC PLUS Tap (Chrome)
HydroTap style	Classic Plus
Finish	Chrome

# Command centre

Dimensions

W280mm x D313mm x H333mm

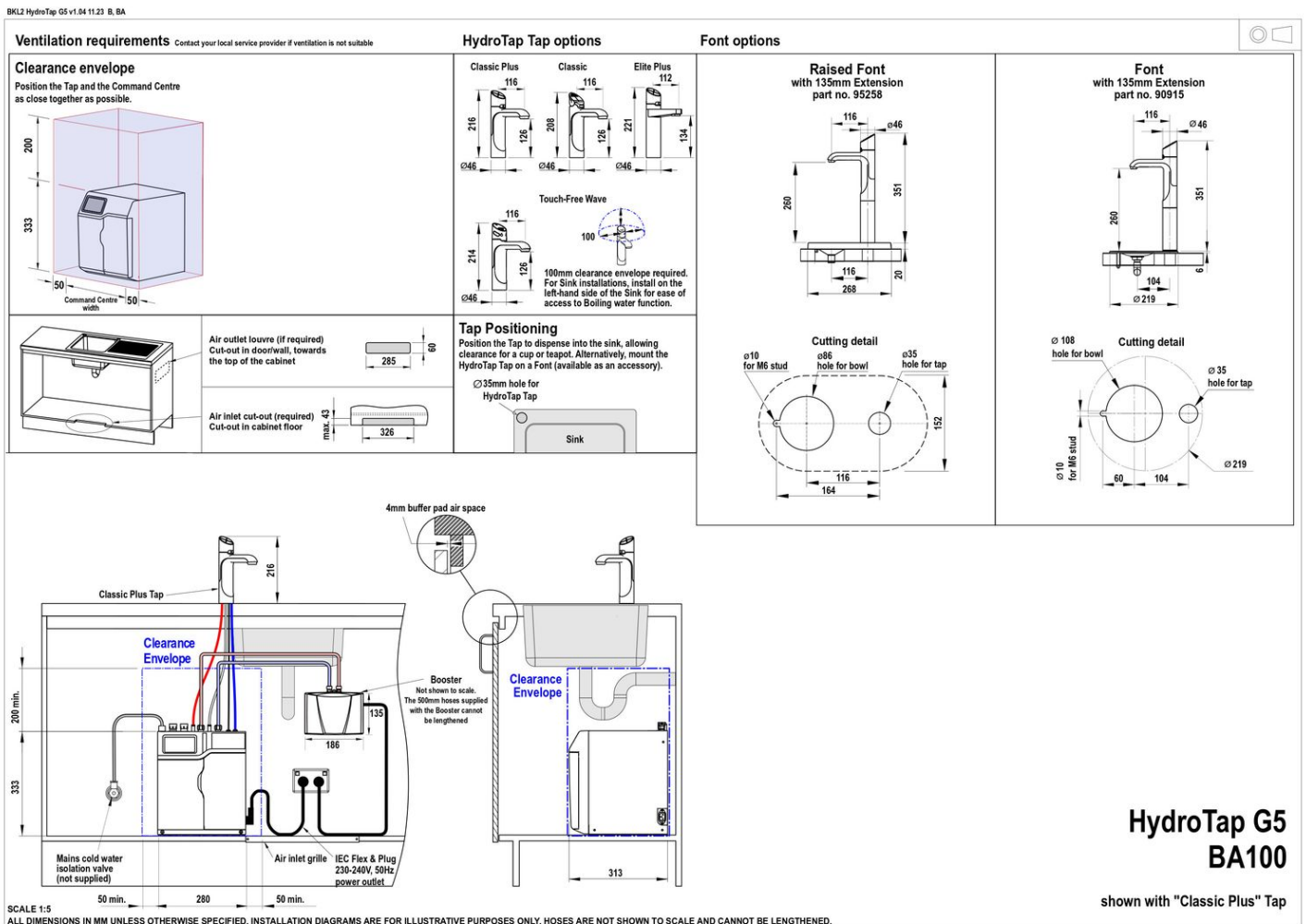
## Installation

### Installation requirements

1. Installation and connection of your Zip HydroTap must be carried out by a Zip Certified service technician, observing national and local regulations.
2. You will require suitable mains electrical and drinking water connections, plus waste water drainage all within 1 metre of the product.
3. Zip HydroTap is air-cooled so discrete cabinetry cut-outs are required for ventilation.
4. Installation on most bench tops is straightforward however some stone bench tops may require a specialised cutting service.
5. If you live in a hard water area, we recommend installation of a scale filtration kit.
6. Installation by Zip Professional Service can be arranged with a phone call or through [www.zipwater.com/book-service-visit](http://www.zipwater.com/book-service-visit)

### Files

Installation Layout 3D (DWG)



**HydroTap G5  
BA100**

shown with "Classic Plus" Tap

Installation Layout (PDF)

# BIM files



↓ ArchiCAD Swift  
Globals Library  
(LCF)



↓ ArchiCAD Zip Water  
Library (LCF)



↓ Revit Project File  
(RFA)



↓ Revit Virtual  
Showroom (RVT)

↓ Download all

# Certifications



Environment  
ISO 14001



Health & Safety  
AS/NZS 4801



Quality  
ISO 9001



↓ Environment ISO  
(PDF)



↓ Environmental  
Product Declaration  
Brochure (PDF)



↓ Filter performance  
(PDF)



↓ Health & Safety  
(PDF)



↓ HydroTap Clean  
SDS (PDF)



↓ Quality ISO (PDF)

# Manuals & brochures



 Brochure (PDF)



 Instruction manual (PDF)




 Quick guide (PDF)



 Tap operation label (PDF)



 User manual (PDF)

 Download all