



HydroTap G5 CS Elite Plus Brushed Rose Gold

Chilled Sparkling



Finish: Brushed Rose Gold

Product code: H5E787Z05AU

Capacity: Residential

Zip HydroTap Design Range Chilled, Sparkling, Filtered water tap features a single under bench command centre including full colour interactive touch screen display with pin code protection and customisable settings including 2 energy saving modes including ON/OFF timers and 2 hour sleep mode, 'Quiet' mode with automated intelligent fan speed adjustment, antimicrobial protection impregnated into key water paths for enhanced hygiene, 100% water efficient air cooled technology, 0.2 micron water filtration, and 2 disposable CO2 cylinders.

Specifications

Product name	HydroTap G5 CS Elite Plus Brushed Rose Gold
Product code	H5E787Z05AU
Filtered water type	CS
Product approvals	WaterMark, RCM, ARC
Warranty	5 years (appliance warranty 36 months plus additional 24 months tank warranty)

Plumbing

Water supply requirements	Cold
Water connection	1/2" BSP (G1/2)
Water valves	Integrated 500kPa Pressure limiting valve and Dual Check Valve
Water pressure	Min 250kPa - Max 700kPa

Electrical

Power rating	0.18kW 220-240V 50Hz
Power supply	1 × 10 Amp socket outlet

Tap design

Tap	Zip HydroTap Design Range ELITE PLUS Tap (Brushed Rose Gold)
HydroTap style	Elite Plus
Finish	Brushed Rose Gold

Command centre

Dimensions	W280mm x D429mm x H333mm
------------	--------------------------

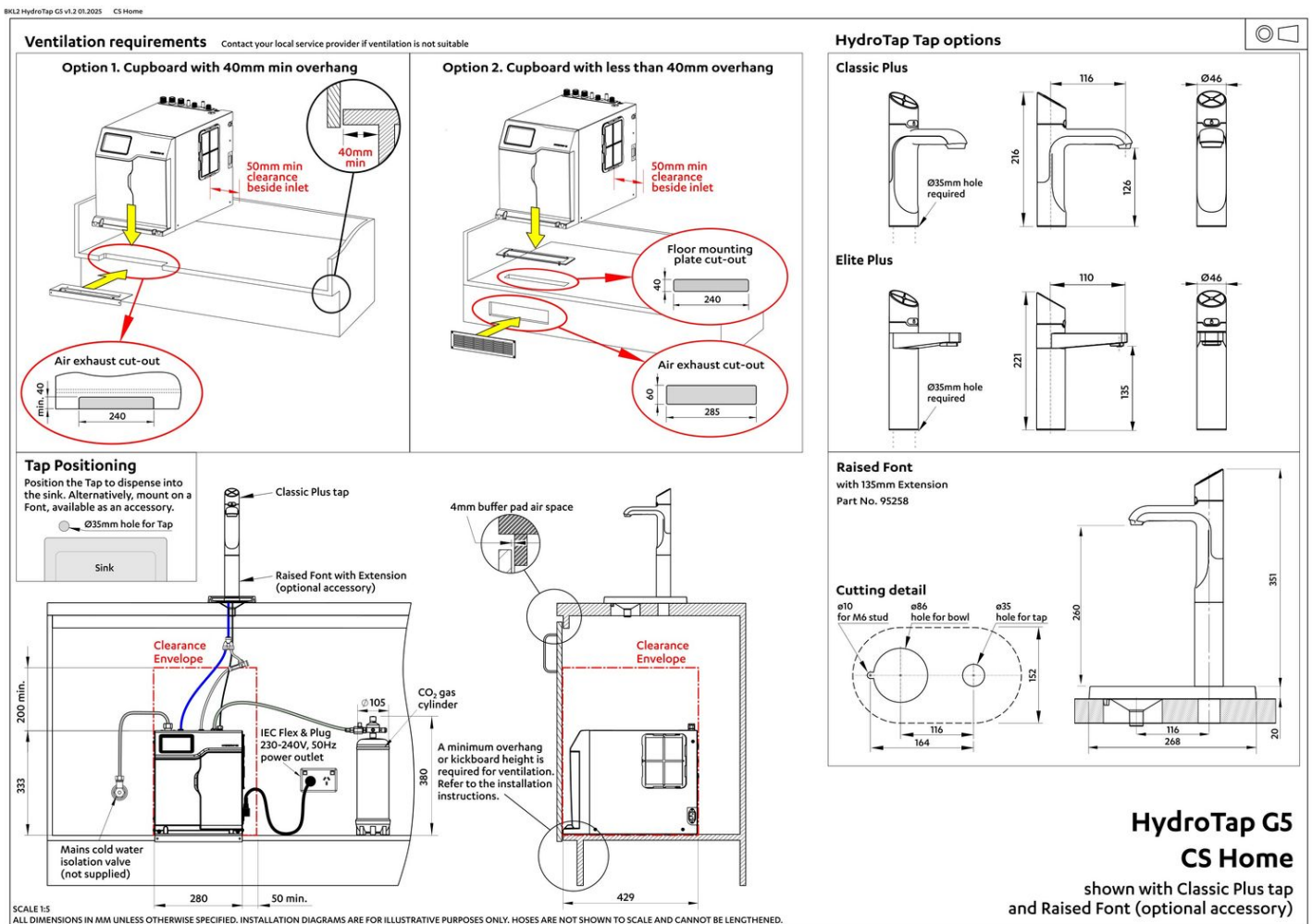
Installation

Installation requirements

1. Installation and connection of your Zip HydroTap must be carried out by a qualified person, observing national and local regulations.
2. You will require suitable mains electrical and drinking water connections, plus waste water drainage all within 1.5 metres of the product.
3. **Discrete cabinetry cut outs are required for airflow. 40mm minimum clearance on cupboard base overhang required otherwise alternative installation options are available.**
4. Installation on most bench tops is straightforward however some stone bench tops may require a specialised cutting service.
5. If you live in a hard water area, we recommend installation of a Zip scale filtration kit.
6. Installation by Zip Professional Service can be arranged with a phone call or through www.zipwater.com/book-service-visit

Files

Installation Layout 3D (DWG)



Installation Layout (PDF)

BIM files



↓ ArchiCAD Swift
Globals Library
(LCF)



↓ ArchiCAD Zip Water
Library (LCF)



↓ Revit Project File
(RFA)



↓ Revit Virtual
Showroom (RVT)

↓ Download all

Certifications



Health & Safety
AS/NZS 4801



Environment
ISO 14001



Quality
ISO 9001



↓ Health & Safety
(PDF)



↓ Environment ISO
(PDF)



↓ Quality ISO (PDF)



↓ Environmental
Product Declaration
Brochure (PDF)



↓ ARC (PDF)



↓ Filter performance
(PDF)



↓ HydroTap Clean
SDS (PDF)

Manuals & brochures



[↓ Brochure \(PDF\)](#)



[↓ CO₂ MSDS \(PDF\)](#)



[↓ Instruction manual \(PDF\)](#)



[↓ Quick guide \(PDF\)](#)



[↓ Tap operation label \(PDF\)](#)



[↓ User manual \(PDF\)](#)

[↓ Download all](#)