



CEX9-U 6.6KW - 8.8KW 50°C

Order Code CL1506

"Fully electronically controlled instantaneous water heater, Twin-Temperature-Control TTC® and LCD key control panel for precise hot water supply. Limited to a maximum of 50°C in accordance with AS3498; no tempering valve required. "

Manufacturing Code 27910



Water Pressure Min 200kPa - Max 1000kPa

Water Connection 12.7mm BSP

Power Rating MPS® (Multiple Power Setting) 6.6 or 8.8kW 220-240V 50/60 Hz

Dimensions W177mm x D108mm x H294mm

Product Approvals WaterMark, CE,

Warranty Commercial usage 12 months. Residential usage 5 years

Installation Requirements

1. Automatic product selection is no substitute for planning by an expert, please consult with your local Zip representative to ensure the product you have chosen is suitable for its intended application.
2. Instantaneous water heaters require dedicated high Amperage Single or Three phase power supplies, please consult with you electrician or electrical design engineer to ensure you have the correct power supply available for the product you have selected.
3. Must be installed by a suitably qualified person in accordance with manufacturers instructions and with all relevant plumbing and electrical regulations.

Installation Detail

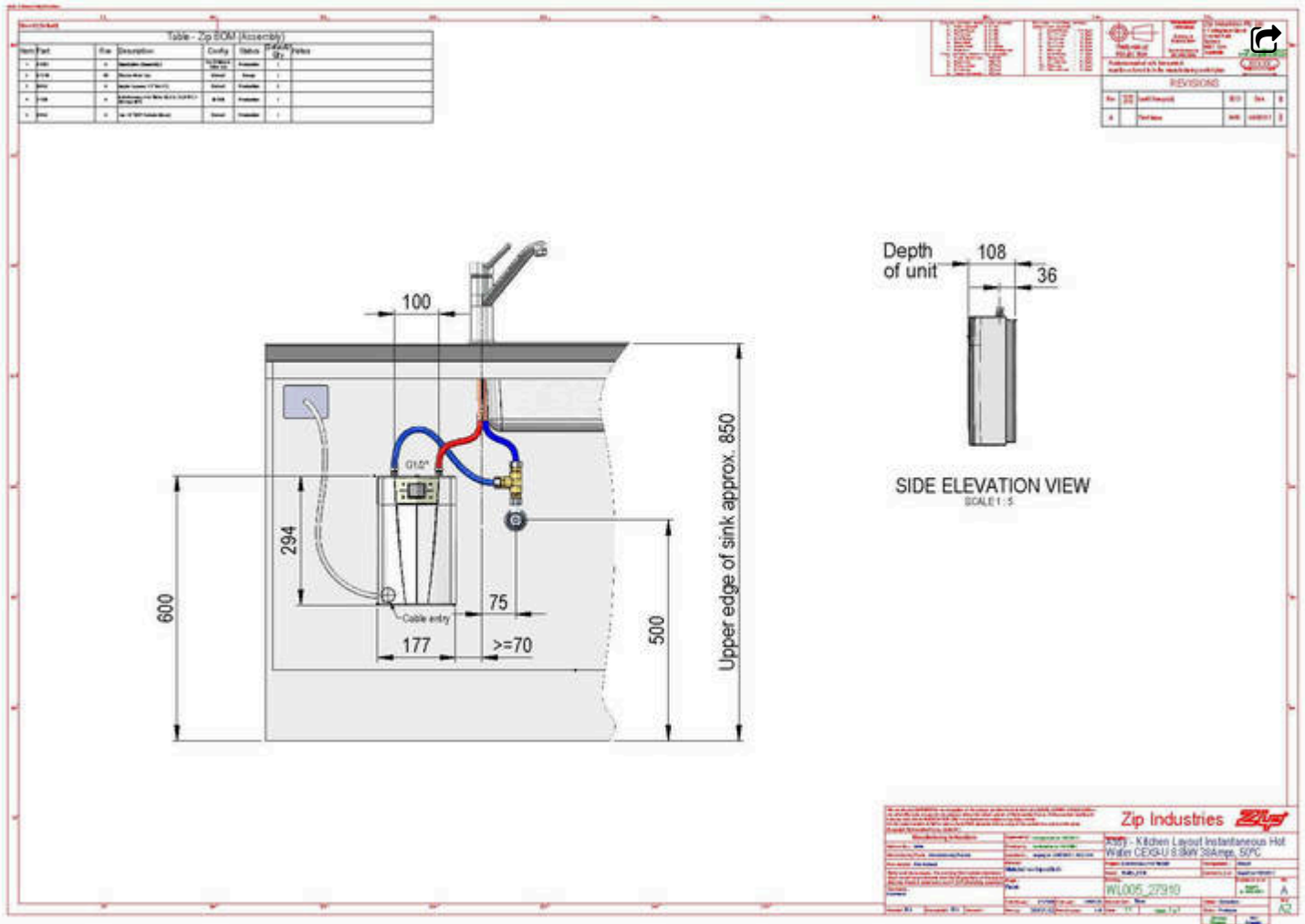
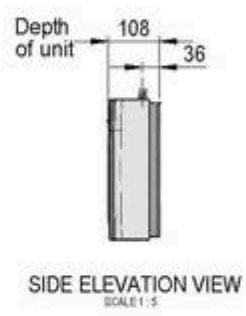


Table - Zip BOM (Assembly)					
Part	Qty	Description	Code	Units	Notes
1	1	Water Heater	CEX9-U	1	
2	1	Water Heater	CEX9-U	1	
3	1	Water Heater	CEX9-U	1	
4	1	Water Heater	CEX9-U	1	
5	1	Water Heater	CEX9-U	1	

REVISIONS	REV	DATE	DESCRIPTION
1	1	2024-02-29	Initial Release



Zip Industries		Zip	
2024 - Kitchen Layout Instantaneous Hot Water CEX9-U 6.6kW 50°C WJ005_27910			
Part No.	CEX9-U	Rev.	1.0
Part Name	Water Heater	Rev.	1.0
Part Desc	Water Heater	Rev.	1.0
Part Mfg	Zip Industries	Rev.	1.0