

DATA SHEET

Polis 2S/MC18-2 Double Deck Bakery Oven 2 + 2 Tray (400x600) Capacity POMIE04A-2

Build

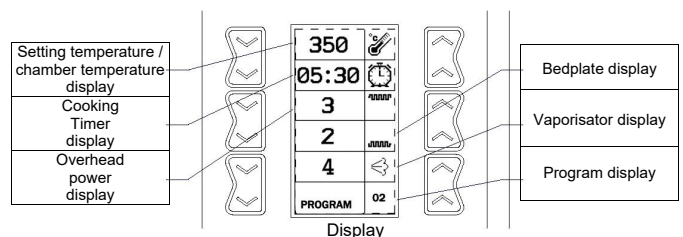
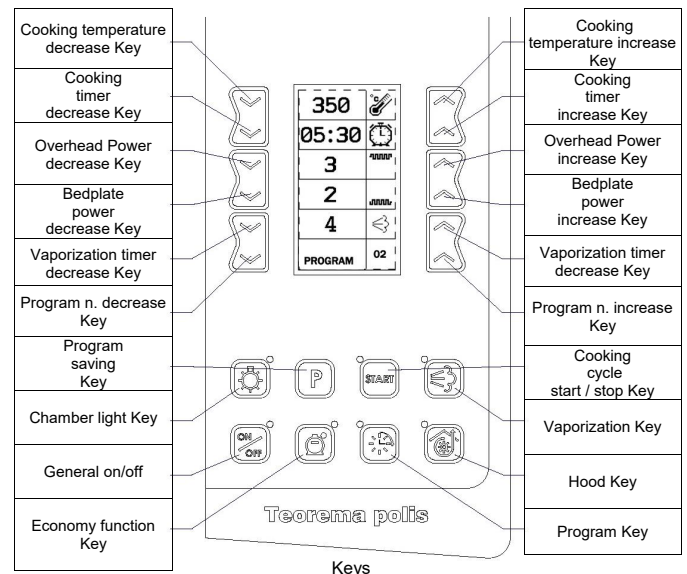
- The Polis 2S/MC18-2 is configured as a double-deck unit with a 180 mm baking chamber height and can be stacked with up to 2 additional units, allowing for a total of 4 units.
- This versatile modular multi-function design ensures high-performance baking for pizzas, breads, and pastries, supported by 70 years of experience in technology, people, and research.
- Unique narrow format design at just 970 mm wide for optimal space utilization, with the ability to fit 600 x 400 trays deep one after another for maximum space efficiency.
- Heavy-duty full stainless steel construction combined with a sleek, modern design.
- Robust construction with a fully sealed, vented, and washable baking chamber featuring removable rails.
- Heavy-gauge front door requires no maintenance and is gasket-free, spring-free, and double-insulated with best-in-class insulation, ensuring minimal thermal heat loss.
- Reinforced, double-insulated stainless steel door with double glass-ceramic fireproof windows.
- Armored stainless steel heating elements minimize heat loss from frequent door openings and high-volume usage.
- High-powered elements mounted at the door opening compensate for heat loss, ensuring consistent baking temperatures and minimal heat loss during high-volume use.
- Standard thick refractory stone cooking base enhances heat retention and absorption for superior cooking performance and even heat distribution
- Completely modular design allows you to stack up to 4 modules, enabling your oven to grow with your business.
- The control panel offers 20 programmable cooking settings, including temperature (0–400°C), timer, element power (0–9), and steam injection. Programs can be saved and named for easy retrieval.
- Schedule up to two programmed starts per day with your customized baking settings, each spaced an hour apart.
- Intuitive color display and audible buzzer signal the user when cooking is finished.
- Pre-heating functionality with configurable slow and fast modes ensures the oven is automatically ready for use.
- The Economy mode is easily activated with a button on the control panel, reducing energy consumption while maintaining oven temperature and saving on energy costs.
- Auto-cleaning function with a 45-minute program automatically sanitizes the cooking chamber for consistent hygiene.
- Balanced dual top and bottom detection probes ensure accurate temperature regulation across the entire baking chamber, providing even baking conditions.
- Independent top and bottom heating adjustments (0–9 intensity) allow precise control of heat distribution without changing chamber temperature, ensuring optimal baking and consistent, high-quality results.
- Manual exhaust valve for humidity management
- LED lamp chamber lighting for low energy consumption and long life.
- Optional steel embossed base improves air circulation beneath the pan for optimized tray cooking.
- Optional steam generators can be added to the deck oven for high-quality steam. Once installed, steam is activated via the control panel, programmed into baking cycles, or manually injected as needed.
- Optional accessories include leavening cells, adjustable stands, bread loaders, tray racks, and built-in extractor hoods, all compliant with Australian and NZ standards.
- The Teorema Polis is built with the highest-quality materials and components, making it a reliable and durable choice and a testament to its usage around the world.



OPTIONS

- Stand on castors
- Exhaust Canopy
- Prover
- Steam Generator
- Bread Loaders

Controls



DATA SHEET

Polis 2S/MC18-2 Double Deck Bakery Oven 2 + 2 Tray (400x600) Capacity POM1E04A-2



Technical specifications

External Size

External Width	970mm
External Depth	1210mm
External Height	720mm

Cooking Chamber size

Internal Width	650mm
Internal Depth	860mm
Internal Height	180mm

Baking Pans

Number of Pans	2 + 2
Pan Width	600mm
Pan Depth	400mm

Weight

Net weight	136 kg x 2
package weight	*

Connection requirements electric triphas + neutral or triphase

Electrical connected loads	6.4 kW x 2
Voltage	415V or 240V upon request
Plug Supplied	No
Cable Length	2m
Current at 400V - 3N	10.5
Current at 230V - 3	18
Level of protection	IP23
Electrical connection	Plugless 4 or 5 conductors

Exhaust

Air exchange	65 m ³ /h
--------------	----------------------

Minimum clearances during installation

Minimum clearance	Left	Back	Right
Standard	200mm	0mm	200mm

Environment

Temperature	0 - 40 °c
Maximum humidity	95% without condensation
Noise	< 70 decibels

Operation

Maximum Temperature	400°c
---------------------	-------

Warranty

2 years warranty Parts & Labour

**Subject to a preventitive maintenance plan*

We reserve the right to alter specifications without notice.

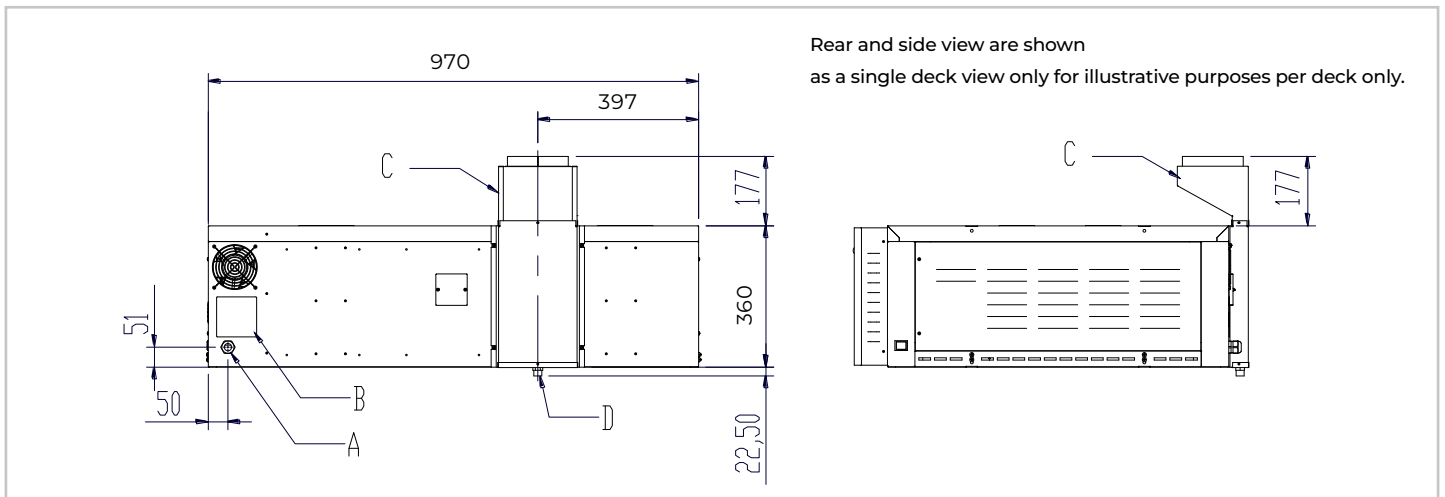
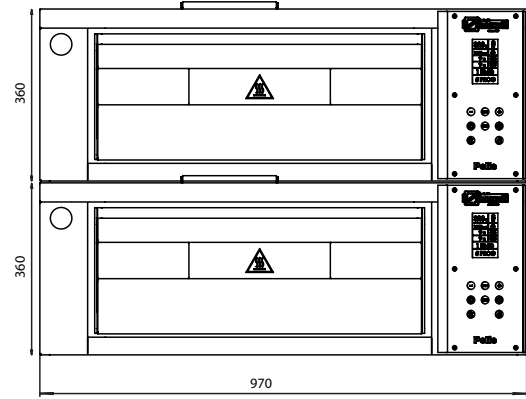
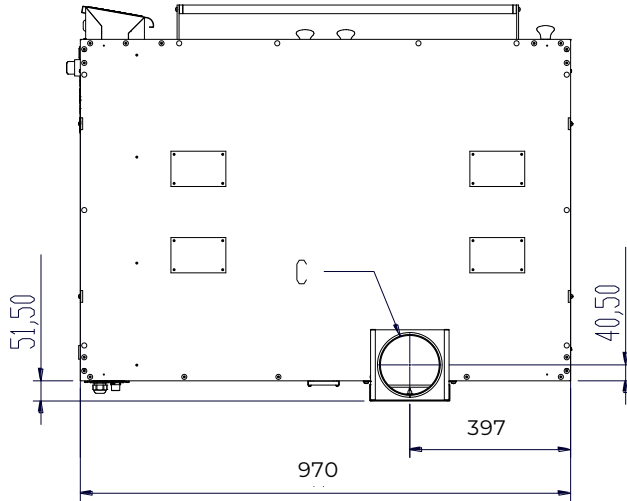
DATA SHEET

Polis 2S/MC18-2 Double Deck Bakery Oven 2 + 2 Tray (400x600) Capacity

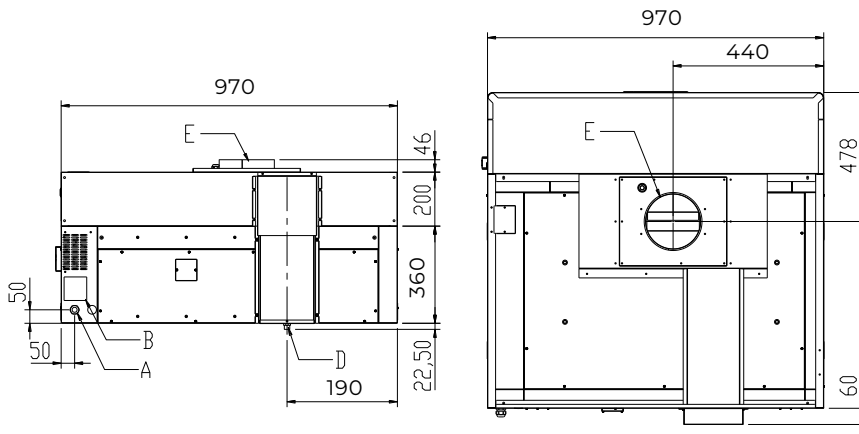
POMIE04A-2



Technical drawings



Optional with hood



A	ELECTRICAL POWER INPUT
B	INFORMATION PLATE
C	VAPOUR EXHAUST CONNECTION Ø 150mm
D	CONDENSATION EXHAUST
E	VAPOUR EXHAUST Ø 200mm

We reserve the right to alter specifications without notice.